



Syropy AI Connectivity

Construction power distribution box jumper wires

OEM/ODM
CUSTOMIZATION AVAILABLE



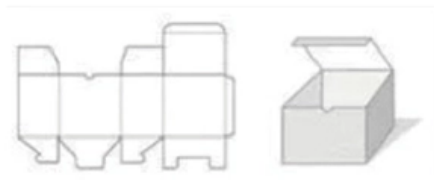
Full product customization



Structure customization



Brand customization



Packaging design





Construction power distribution box jumper wires



Jumpering, distribution, and measurement , Phoenix Contact

Design a compact and modular control cabinet configuration for your power engineering. The new modular terminal blocks from Phoenix Contact have a universal plug-in design. In addition, thanks to

Cable Junction Boxes: 8 Types, Tech Specs & Installation

In 10kV power distribution cabling projects, high-voltage cable junction boxes are increasingly replacing traditional overhead



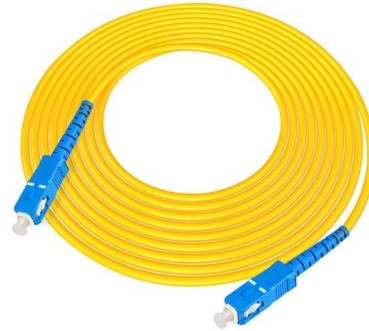
Spider Boxes , Temporary Power , Hubbell Wiring Device-Kellems

Explore Hubbell Wiring Device-Kellems' spider boxes, built to provide reliable and versatile temporary power solutions in demanding environments like construction sites and outdoor events. These



Underground Service Section of the DTE Energy Green Book

This drawing shows services installed from underground residential distribution but also applies to underground services from overhead distribution. When a proposed detached garage is to be on the



Selection and Use of Terminal Block Jumpers

DIN rail mounted terminal blocks are found in nearly every industrial control panel. In this short article, we focus on the jumpers that may be used to



Understanding Distribution Boxes: Your Guide to Power

Every single type of these power distribution boxes serve to regulate electricity management systems safeguarding the structure against unauthorized



Nexans

We manufacture pre-assembled jumper cables of 2-150 m length with interface A to F connectors and terminations for any kind of medium voltage power distribution



DB BOX(Electrical Distribution Box):



Everything You

Learn everything you need to know about the Electrical Distribution Box (DB Box). Explore types, materials, installation tips, etc.



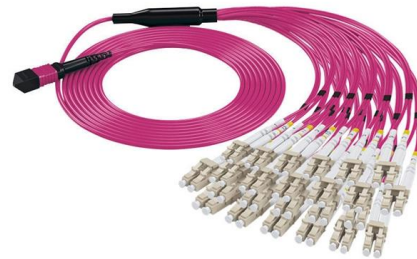
ENERGYBOX Assemblies for Construction Sites (ACS)

We recommend to install these distribution boards in civil building sites, market areas, outdoor events, festivals and temporary electrical distribution.



Wire Jumpers

Having each wire jumper pre-terminated makes an entire project go faster, especially when the jumpers can have piggyback terminals, which allows



Just a moment

Just a moment We're checking your browser before accessing our website.





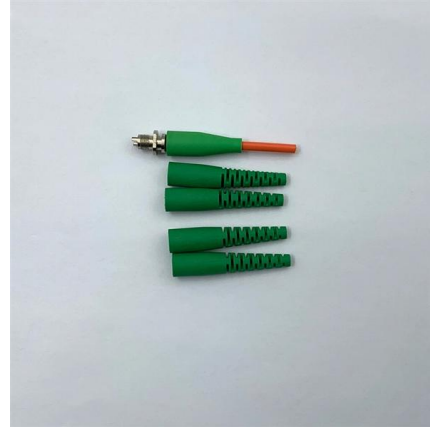
power electronics

When I first started seeing them, I just figured they were parts of the grid taken offline and jumpered together as a safety in case someone accidentally



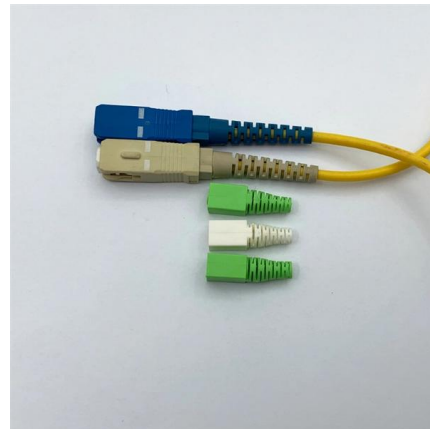
Wiring Jumpers Part 1: What They Are & Why We Use Them

[1m:13s] If jumpers were unavailable, you could simply use a wire to make the same kind of connection in most cases. [1m:21s]When wiring terminal blocks, for instance, it is common to connect multiple



Wiring a Breaker Box

Wiring a breaker box is a highly technical skill--knowing how it operates isn't. Take some of the mystery out of those wires and switches that lurk



Selection and Use of Terminal Block Jumpers

In this short article, we focus on the jumpers that may be used to link multiple blocks together. This provides a convenient way to expand the number of



Main Components of Overhead transmission

The guard wires are provided when communication lines are crossing the transmission lines or distribution lines. The guard wires are solidly connected



Understanding Distribution Boxes: A Comprehensive Guide

A distribution box, also known as a power distribution box or electrical distribution box, is used to distribute electrical power safely to multiple

IEEE 525-2007_accepted

IEEE-SA Standards Board Abstract: The design, installation, and protection of wire and cable systems in substations are covered in this guide, with the objective of minimizing cable failures and their



power electronics

What are these jumpers between phases and earth in a residential distribution grid? Ask Question Asked 3 years, 3 months ago Modified 3 years, 3



Power Distribution Box, 110V Electricity Meter Electrical

Power Distribution Box, 110V Electricity Meter Electrical Box with NEMA 5-20 Power Outlet Pane, IP54 Electrical Breaker Socket Distribution Box for Construction

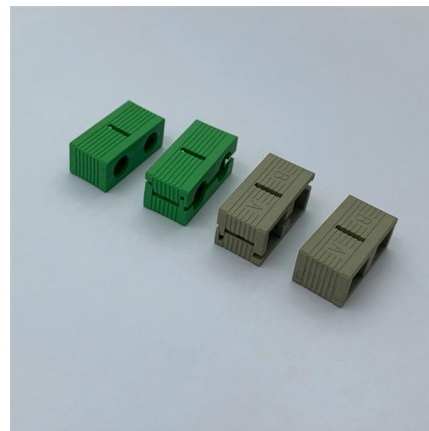


Distribution Box: Types and Functions , Axis-Electricals

A distribution box ensures that electrical supply is distributed in the building, also known as a distribution board, panel board, breaker panel, or electric panel. It is

Rent Power Distribution Equipment

United Rentals is a leading provider of power distribution equipment for rent, including cables, transfer switches and power distribution boxes. Browse our



How to Make Temporary Power Safer on Construction

Temporary power systems are essential for construction projects, yet they often introduce serious safety risks. Loose wiring, exposed connectors, and



10 Essential Rules for Circuit Board Jumper Wires

Abstract Jumper wires play a critical role in circuit board assemblies, whether used as part of the original design, for modifications, or to correct defects. To ensure



- TELECOM CABINET
- BRAND NEW ORIGINAL
- HIGH-EFFICIENCY



The installation requirements for the distribution box

A distribution box is the heart of any electrical system. It takes the incoming power and safely distributes it to different circuits throughout your

Why Flexible Links and Jumpers Are Critical in Power Distribution

Discover why flexible links and jumpers are vital in power distribution. Learn how they enhance safety, reduce stress on equipment, and ensure reliable performance.



using a jumper on the circuit-breaker box

Electrical - AC & DC - using a jumper on the circuit-breaker box - One of my 120 lines went dead. So I used a jumper in the electrical box, so all the breakers would have 120 volts, without the



Inside Your Main Electrical Service Panel

Any electrical repair in your home involves turning off the power to the circuit you'll be working on, and you do this at the main electrical service



Wiring Jumpers Part 1: What They Are & Why We Use Them

Jumpers kind be used in many different scenarios ranging from power distribution within a panel like we have already discussed.

Cable Junction Boxes: 8 Types, Tech Specs

In 10kV power distribution cabling projects, high-voltage cable junction boxes are increasingly replacing traditional overhead



Contact Us

For datasheets, pricing, or custom high-speed optical interconnect solutions, please visit:
<https://www.syropy.com.pl>