

# **Construction of cold aisle in computer room**





## Construction of cold aisle in computer room

---



### Optimizing Data Center Cooling: The Power Of Hot And

Discover how to optimize your data center cooling system with hot and cold aisle containment. Learn about the assessment, design, installation, and

### Data Center Hot Aisle/Cold Aisle Layout Design

Data Center Hot Aisle/Cold Aisle Layout Design  
Looking for ways to keep your Data Center Server Room cool? Consider the hot aisle/cold aisle



### Data Centre Cooling: Hot Aisle and Cold Aisle Design

Data Centre Cooling: Hot Aisle and Cold Aisle Design  
Data centres have become an integral part of today's technological landscape, used to store, process and

### The cold aisle containment advantage

HP partnered with Rittal Corporation and Liebert Corporation to establish a test environment for measuring and validating the benefits of cold aisle containment and validating the constraints of



### Hot vs. Cold H

Hot aisle or cold aisle containment is a layout design for server racks and other computing data center. The aisle/cold aisle containment configuration is to conserve energy and lower cooling costs by

### Hot Aisle vs Cold Aisle in Data Centers: Technical

What Are Hot Aisle / Cold Aisle Configurations?  
Data centers are ovens if left unmanaged. Hundreds, sometimes thousands of servers pump out



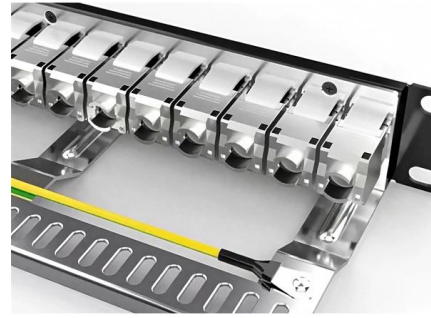
### The pros and cons of hot and cold aisle containment

With data centres and computer server rooms becoming larger and more numerous companies are often faced with a decision: what is most suitable for their



## Aisle Containment Systems for Hot & Cold Aisle Solutions

Cool Shield Aisle containment solutions reduces server row temperatures in active data centers. Learn more about the benefits of hot and cold containment.

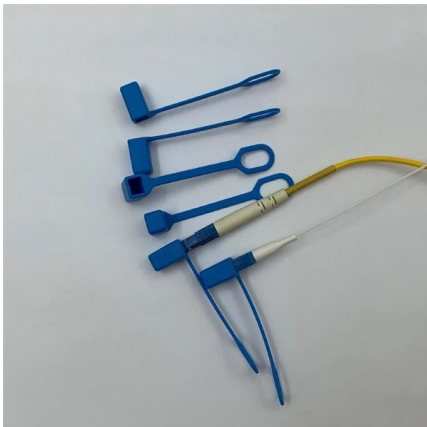


### A DEEP DIVE INTO THE WORLD OF HOT & COLD AISLE

OPERATIONAL ASPECTS OF HOT AND COLD AISLE CONTAINMENT ZONES Airflow Management: Utilize perforated tiles, grates, or directional vents to guide cold air to the server inlets and direct hot

### Move to a Hot Aisle/Cold Aisle Layout

A Time-tested Technique The hot aisle /cold aisle data center layout was originated by IBM in 1992 and it is one of the oldest ways to save energy in the data center.



### What To Know About Hot-Aisle, Cold-Aisle, And Chimney Data Center

The concept of containment began with the introduction of hot-aisle, cold-aisle arrangements and the standardization of computer server design to a front-to-back airflow



## The Advantages And Disadvantages Of Hot-Aisle, Cold

But there are some disadvantages to cold-aisle containment. Allowing the discharge air from the hot aisle to fill the room results in temperatures



## Cold & Hot Aisle Containment For Data Center Efficiency

Learn how cold and hot aisle containment improves airflow, reduces energy use, and boosts reliability in data centers. Backed by CFD insights from

## Server Room Containment Systems , Hot & Cold Aisle Containment in

Hot and cold aisle containment is a proven strategy to optimize airflow, reduce energy costs, and improve cooling efficiency. At Profile IT Solutions, we specialize in designing and implementing



## How to Make the Right Choice? Comparison between the Enclosed Cold

After arranging the cold (hot) aisle in the computer room, the cold air volume ( $Q_1$ ) required by a single rack remains unchanged. Since the cold air sent out by the precision air



## Aisle Containment

Open Aisle Containment Traditional open aisle data centres use perimeter PAC (precision air conditioning) or CRAC (computer room air conditioning) units to



### Cold and hot aisle construction in computer room

In this way, the upper and lower temperature gradients of the cold aisle can be reduced, and the air outlet temperature of the air conditioner can be appropriately

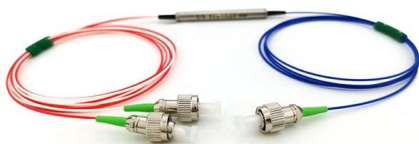
### FOCUSED COOLING USING COLD AISLE CONTAINMENT

While either hot aisle or cold aisle containment systems can be installed and are both capable of increasing efficiency and cooling today's high heat data centers, meaningful differences exist in how



### Why should the computer room design hot and cold aisles?

Design principles of hot and cold aisles in computer rooms The main service equipment of the information center includes storage systems, host systems, high





## Data Center Design: Hot Aisle & Cold Aisle - Length

Efficient airflow management in data centers relies heavily on proper Hot Aisle and Cold Aisle configurations. To maintain thermal performance, equipment



### FOCUSED COOLING USING COLD AISLE CONTAINMENT

As an addition to a conventional precision cooling system, cold aisle containment consistently separates cold and warm areas without requiring structural changes to the data center.

### Hot vs Cold Aisle Containment: 40% Cooling Savings

Discover how hot and cold aisle containment revolutionizes cooling efficiency, cuts energy costs by up to 40%, and extends equipment lifespan. |



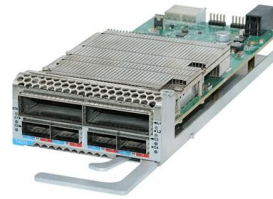
### Cold Aisle Containment: The Ultimate Guide To

Throughout this article, we explored what cold aisle containment is, its significance in maintaining optimal airflow, and how it integrates into your Data Centre



## How to Keep Your Server Room Cool

Organization One solution is to arrange racks in a hot aisle/cold aisle configuration, involving positioning server racks in alternating rows, with cold air



## Contact Us

---

For datasheets, pricing, or custom high-speed optical interconnect solutions, please visit:

<https://www.syropy.com.pl>