

Construction of cable tray bends with uphill and downhill slopes





Construction of cable tray bends with uphill and downhill slopes

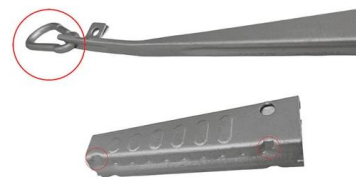


The Importance of Pull Direction in Cable Installation

However, the position and magnitude of the bends placed in the overall conduit design must be analyzed to determine the optimal pull direction. The force

Twelve high voltage cable construction techniques used worldwide

This technical article discusses twelve different methods for laying high voltage cables. Out of the ten, four are deemed



Cable Tray Design and Components Guide

This document provides information about cable trays and accessories, including straight cable trays, perforated trays, returned edge and flange types, and bent

Types of Bends in Wire Mesh Cable Trays: A Detailed

Wire mesh cable trays are widely used in industrial and commercial installations to support and manage cables effectively. One of their greatest

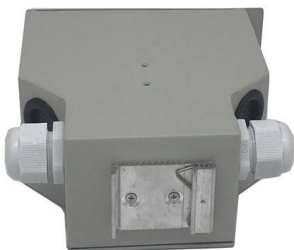
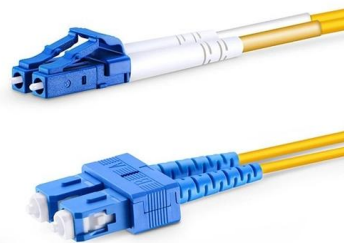


Productivity and cost of a small-scale cable yarder in an

Therefore, there has been an increasing interest in the application of a small-scale cable yarding system. We performed uphill and downhill yarding

(PDF) OPTIMAL SLOPES OF MINE HAUL ROADS

PDF , On Jul 20, 2022, A Shakenov published OPTIMAL SLOPES OF MINE HAUL ROADS , Find, read and cite all the research you need on ResearchGate



Cable Tray Offset Calculator , Vertical, Horizontal & Compound Offset

Calculate horizontal, vertical, or compound cable tray offsets based on bend angle, offset distance, and available installation space. Use this tool to estimate sloped section length, horizontal run



Best practice guide to cable ladder and cable tray

The following recommendations are intended to be a practical guide to ensure the safe and proper installation of cable ladder and cable tray systems



B-Line series Cable Tray Design Considerations

Cable tray must be capable of supporting not just the weight of the cable, but also the weight of any equipment or materials attached to the cable tray. Additionally, dynamic environmental elements

Make a 90 Bend in Electrical Cable Tray

The Easy Guide to How to make a 90 electrical cable tray bend to measurement of your choice. Great if you are new or just forgot how to do it, this easy



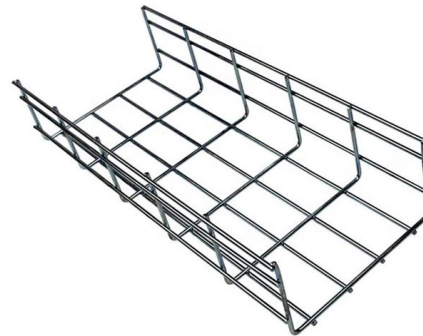
cable tray bends and offset fabrication table

Resources For Electrical & Electronic Engineers cable tray bends and offset fabrication table Discover more from Electrical Engineering 123 Subscribe to get the latest posts sent to your email.



Cable Tray Technical Guide A practical guide to product selection and

A practical guide to product selection and installation This guide for engineers and installers has been developed by ABB as a practical reference regarding cable tray characteristics, installation, and



Assembly Guide

Assembly Guide The bends, tees, crosses, risers and reducers of wire mesh cable tray can be easily and quickly made live at the project by using a bolt cutter. Since the jaws of the bolt cutter drags a



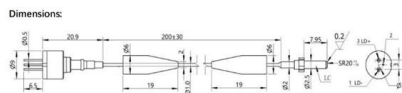
Best Practice Guide to Cable Ladder and Cable Tray Systems

This publication is intended as a practical guide for the proper and safe* installation of cable ladder systems, cable tray systems, channel support systems and associated supports.



Cable Logging

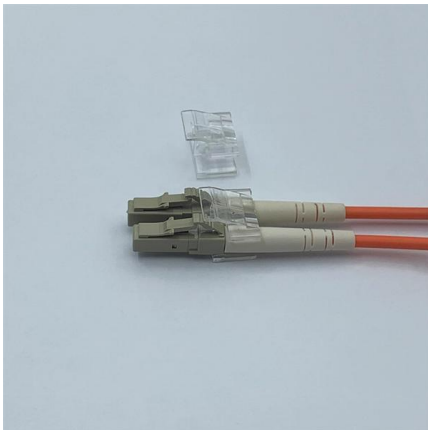
Best Practice Guidelines for Cable Logging First edition December 2000 Revised edition January 2005 These Best Practice Guidelines are to be used as a guide to certain cable logging construction





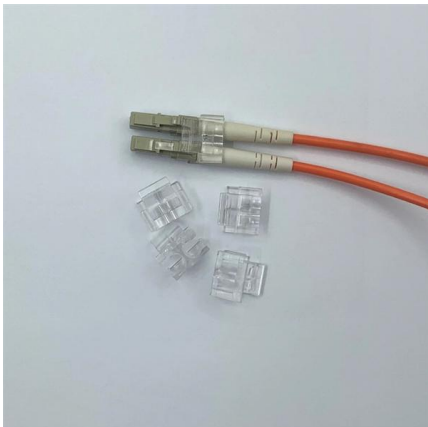
Cable Tray Trunking & Ladder Installation Method for

The purpose of this article is to define the sequence and methodology for the installation of electrical cable trays, cable trunking, cable raceways and boxes,



Smooth Transitions: Understanding the Important Role

Cable tray bends play a critical role in ensuring smooth transitions and maintaining the integrity of electrical wiring systems. By providing controlled pathways for



Cable Tray Bend and Offset Formulas , PDF

The document discusses Metstrut cable tray systems, including their configuration, materials, dimensions, and compliance with industry standards. Key points: -



Operator Skill and Excavator Setup Critical for Safe

Equipment Earthmoving Equipment Excavators Operator Skill and Excavator Setup Critical for Safe Operation on Slopes Attention to detail and



Cable Tray Installation Method Statement

Below is the detailed cable tray installation method statement not only for cable tray but also applicable for GI ladder and trunking for indoor and outdoor applications



Method Statement installation of Cable Trays and Ladders

This method statement covers the site installation of the cable tray & ladders and the requirements of checks to be carried out.



Cable Tray Design and Standards Guide

1. The document outlines codes and standards that must be followed for design and construction of cable trays and their components. Standards listed include those



How to Install Cable Tray: A Comprehensive Guide to Different Cable

Welcome to our step-by-step guide on installing cable trays! In this video, we'll explore the different types of cable trays available and provide detailed instructions for their installation.





such/ignore.txt at main · yeerma/such · GitHub

aasdadasada. Contribute to yeerma/such development by creating an account on GitHub.



CABLE TRAY SYSTEMS GUIDE

The Ladder Tray features light, rugged, tubular steel construction. It is designed for mechanical support and strain relief in long runs of cable and creates a smooth gradual bend for cable. Rail and stringer

Cable Tray Bend , Information by Electrical Professionals for

There is no minimum radius bend for cabletray or low voltage conductors that I'm aware of in the NEC, unless the specific manufacturer establishes a minimum. NEC 392.18 (A) states that



Contact Us

For datasheets, pricing, or custom high-speed optical interconnect solutions, please visit:
<https://www.syropy.com.pl>