

Construction Plan for Support Arm Cable Tray





Overview

Comprehensive technical drawing illustrating various cable tray installation details for electrical systems. The document includes multiple configurations for mounting trays with Ø10mm threaded rod supports and expansion/anchor bolt connections. With our many years of experience, we are one of the leading manufacturers in this field. Cable ladder systems and cable tray systems shall be manufactured in accordance with BS EN 61537, channel support. With the RS 60 cable tray installation system, we offer you the last installation type of the standard support construction, so that you can implement all installations required in the building project with circuit integrity maintenance on the basis of the standard support construction.



Construction Plan for Support Arm Cable Tray

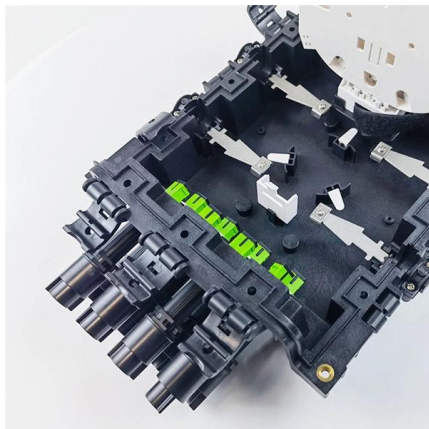


Best Practice Guide to Cable Ladder and Cable Tray Systems

This publication is intended as a practical guide for the proper and safe* installation of cable ladder systems, cable tray systems, channel support systems and associated supports.

Ethiopia Cable Tray Design Details , PDF

The document contains engineering drawings for: 1) A ladder type cable tray system with general notes specifying materials, finishes, and dimensions. 2) A hold down

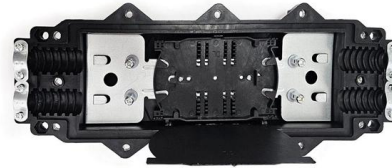


A Guide to Installing and Supporting Electrical Cable Trays

This guide covers the critical steps, from selecting the right electrical cable tray and performing accurate cable fill calculations to managing a safe cable pull through

Cable Tray Trunking & Ladder Installation Method for

Resources For Electrical & Electronic Engineers
Cable Tray Trunking & Ladder Installation Method
for Projects The purpose of this article is to define the



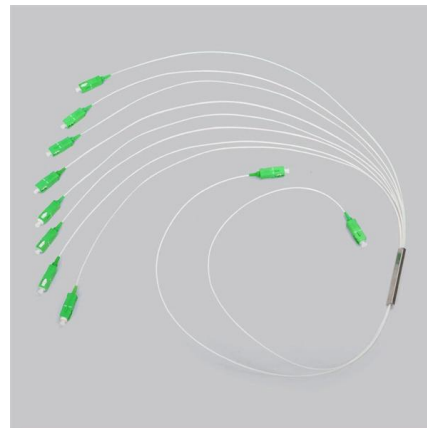
Method Statement installation of Cable Trays and Ladders

This method statement covers the site installation of the cable tray & ladders and the requirements of checks to be carried out.



Method Statement for Installation of Cable Tray or Trunking

On completion of cable tray/ ladder installation including fittings, inspect exposed finish. Remove burrs & construction debris and repair damages finishes



Decoding Cable Tray Support Structures: Tips and Insights

Discover efficient cable tray support structures for optimal cable management. Learn about hanger, wall-mounted, and Unistrut systems for safer



Microsoft Word



Cable tray should be stored away from well travelled corridors. Stack loosely on adequate support to prevent contact with moisture and the ground. For straight lengths; supports should be placed no



A Guide to Installing and Supporting Electrical Cable Trays

A professional guide to installing electrical cable tray systems per NEC Article 392. Covers support, securing cables, and fill calculations.

Cable Tray Layout & Section (Electrical) , PMG Engineering

Explore the essentials of cable tray layout and section design in electrical systems, ensuring optimal cable management and support.



Cable Tray Installation Method Statement

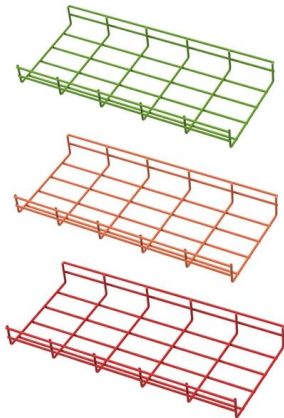
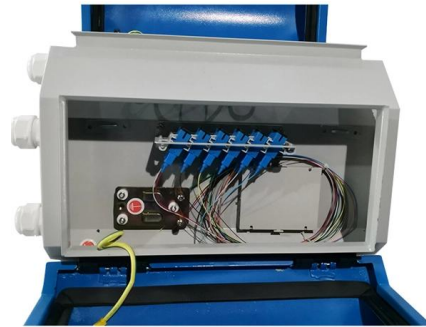
The document provides guidelines for installing cable trays and accessories. It outlines 15 steps for the installation process including preparing cable tray





An In-depth Analysis for Optimal Cable Tray Support Span

This study investigates how to define the longest cable tray support span considering constructability in order to reduce the number of supports which is a chief cost of a cable tray system.



B-Line series Cable Tray Design Considerations

Our wind certification report provides you with list of acceptable B-Line series cable tray supports, fittings and covers based off of the environmental conditions, cable loading, and type of cable tray in your

Cable Support System Requirements

Unipath System The Unipath cable support system offers a hybrid of the center rail support system and a support structure similar to a bridle ring. Made of a sturdy



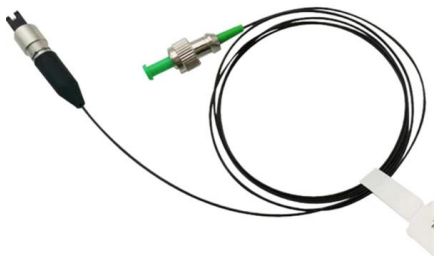
Cable Tray Systems: Requirements and Best Practices

Comprehensive guide to cable tray systems requirements: tray types, materials, loading, supports, bonding, routing, and best practices for safe electrical cable management.



Cable Tray Technical Guide A practical guide to product selection and

In designing supports for a cable tray system, consideration should be given to the loads associated with future cable additions and any additional loading that may be applied to the cable tray system (e.g.,

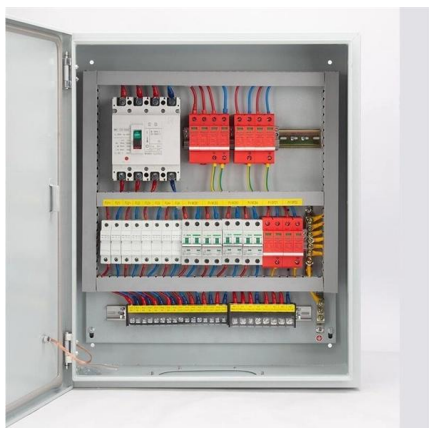


Guide to cable support systems

The load capacity of the cable trays according to the support width can be read off in the diagram using load curves - here, shown as an example for a cable tray with the tray widths 100 to 600 mm.

Electrical cable Tray Installation Details with Support

Download Electrical cable Tray Installation Details with Support Systems. Instant access to professional CAD drawings for architects, engineers & designers. Free



METHOD STATEMENT FOR CABLE TRAY INSTALLATION

3.4 Inspection and Test Plan/ Method Statement
3.4.1 SATIP-P-104-03 Cable Tray Fittings and Accessories
3.5 Latest Revision of the following Documents shall be used
3.5.1 Vendor Drawing



Standard Support Construction Of The Cable Tray RS

With the RS 60 cable tray installation system, we offer you the last installation type of the standard support construction, so that you can implement all installations required in the building project with



Electrical cable Tray Installation Details with Support

Comprehensive technical drawing illustrating various cable tray installation details for electrical systems. The document includes multiple configurations for mounting

Cable Tray Sleeper Design Details , PDF , Length

The document provides details on the design of a cable tray mechanical support system, including specifications for cable tray sleepers, impeded steel plates, and



Cable Tray Installation

Learn everything about cable tray installation with our complete guide. Discover types, steps, and safety tips for efficient electrical cable management.



Cable tray manual

Where a cable tray wiring system containing Type ITC cables will be exposed to any significant amount of hot metal splatter from welding or the torch cutting of metal during construction or maintenance

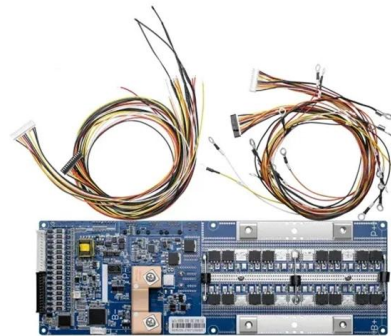


Cable Tray Support Solutions: Safety, Compliance,

Cable trays are an integral part of modern industrial infrastructure and civil architecture. With the rapid development of electrification and informatization,

Cable Tray Technical Guide A practical guide to product selection and

SOLID-BOTTOM CABLE TRAY Providing additional cable protection, solid-bottom cable tray is sometimes preferred to support and protect numerous small instrumentation and control cables.



CABLE TRAY SYSTEMS GUIDE

Steel Ladder System Hubbell's NEXTFRAME® Ladder Tray is the effective and widely used cable runway that supports and delivers bundles of cable between cabinets, racks, and closets, along

Complete cable tray manual for electrical engineers and



The final drawings for a cable tray wiring system may be completed and sent out for bid or construction more quickly than for a conduit wiring system. Cable trays



Cable Management Support Systems

Cable Support Systems are well designed to provide necessary support for cable trays, cable ladders and trunkings. Cable supports are manufactured according to

Contact Us

For datasheets, pricing, or custom high-speed optical interconnect solutions, please visit:
<https://www.syropy.com.pl>