

# **Connection of explosion-proof conduit to distribution box**





## Overview

---

Conduit system requires that all boxes are manufactures with "Ex de" type of protection and the entries must be made through a conical threaded hole. Seven workers vanished after a deafening blast tore through a California fireworks facility last July – a chilling reminder of why explosion-proof electrical equipment installation isn't just regulation, it's life insurance. Conduit installation is certainly the most suitable for applications in all dangerous areas where, in addition to the presence of explosive atmosphere, the problem is to operate in severe weather conditions and where mechanical protection of cables has a particular importance for safety. Proper installation, wiring, and usage are critical to ensuring the safety and functionality of these systems. Choosing how cables enter an explosion-proof distribution box is one of those decisions that looks straightforward on paper but gets complicated fast once you factor in the actual site conditions.



## Connection of explosion-proof conduit to distribution box

---



### **Kopex-Ex metallic conduit systems**

Explosion Proof Metallic Conduit Systems Kopex-Ex metallic conduit systems Kopex-Ex cable protection systems have been specifically designed to provide the optimal safe solution for protecting cables in

### **HazardEx**

Connecting equipment to explosion-proof motors  
Author : Andrea Battauz, Cortem Group 14 May 2024 Increased safety electric motors or



### **Ex-proof electrical plant: conduit installation**

Once, all electrical explosion proof plants were made according to the "American" system. This meant that all connections between the various boxes were made through metal pipes containing electrical



### **Explosion Proof Junction Box Types, Prices**

Explosion-Proof Junction Boxes: Pricing, Sizes & Installation Guide In hazardous locations where flammable gases, vapors, or dust are present,



### **Hazardous Location Conduit , McMaster-Carr**

Choose from our selection of hazardous location conduit, including over 7,700 products in a wide range of styles and sizes. Same and Next Day Delivery.



### **Installation and Wiring of High and Low Voltage Explosion-Proof**

Generally, professional electricians should handle the wiring of explosion-proof distribution boxes, as they possess the necessary skills and safety equipment. In non-urgent cases,



### **Explosionproof Conduit Fittings , SMC**

Let SMC be your Explosion-Proof Conduit Outlet Boxes and Explosion-Proof Conduit Sealing Fittings solution. Shop our variety of Explosionproof Conduit Fittings





## PuriLite Explosion Proof Power Distribution

Access to conduit openings can be found throughout the explosion proof power distribution box. Operators may mount the ATEX-rated isolator unit using a sturdy rail mounting plate. Applications:



## Conduit Sealing Instructions for Equipment in Hazardous Locations

Conduit seals prevent explosions from spreading through conduit systems and igniting outside atmospheres. When properly installed and filled with a UL-listed sealing compound, they prevent the

## Terminal boxes , Junction boxes , Ex , Ex e , Ex d , ATEX , Explosion

Safely conduct, connect and distribute energy in hazardous areas with R. STAHL's terminal boxes. We offer bespoke, custom-made terminal boxes and terminal box combinations, as well as standard



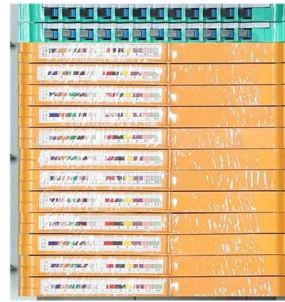
## Explosion-Proof Through Connection Junction Aluminum

Explosion-Proof Through Connection Junction Aluminum Wiring Threading Threaded Conduit Cable Passing Box, Find Details and Price about Junction Box Terminal



## Explosion proof conduit systems

Our products include metallic and nylon flexible conduits and fittings meeting the strictest worldwide standards for use in explosive hazardous atmospheres including ATEX/IECEX, UL/CSA and EAC Ex.

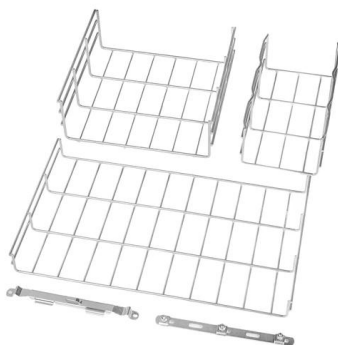


### Boxes

GR Type Conduit Outlet Box, Explosion-Proof, Dust-Ignitionproof, Malleable Iron, Unilet, GRT Hub Type. Includes: Internal Ground Screw and O-Ring, Internally Threaded Surface Cover with 3.88" Opening,

### Explosion Proof Conduit Fittings

Function Explosion proof conduit fittings are designed to interconnect conduit to isolate the cable conductor based on conduit configuration in a small confined



### Explosion Proof Electrical Fittings , Explosion Proof

Douglas Electrical Manufactures Explosion Proof Electrical Fittings, Explosion Proof Conduit Seal, and Explosion Proof Wire Seal for Hazardous Locations. Our



## Ex-proof electrical plant: conduit installation

The connection between the different boxes is made through steel pipes which protect cables. These tubes are connected to the boxes by means of special certificated fittings.



## Explosion-Proof Distribution Boxes: Special Installation Requirements

Unlike standard distribution boxes that could become shrapnel shards in volatile environments, explosion-proof containers are engineered fortresses that absorb, contain, and vent catastrophic

## Ex junction and terminal boxes - Explosion-Proof , mlx-ex

GRP Ex terminal boxes What are Ex Terminal Boxes? Ex terminal boxes are protective enclosures used to connect and distribute electrical circuits safely within explosive atmospheres. They serve as



- IP65/IP55 OUTDOOR CABINET
- ALUMINUM
- OUTDOOR ENERGY STORAGE CABINET
- OUTDOOR EQUIPMENT CABINET

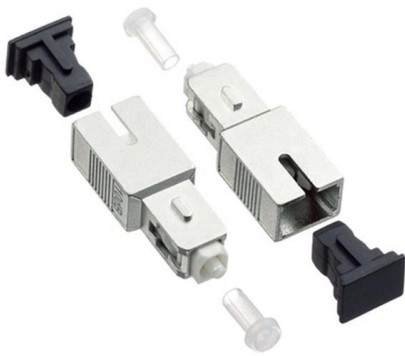
## Direct and indirect entries into explosion-proof electrical

Direct and indirect entrances into explosion-proof electrical systems The systems are mainly divided into systems with metal protective conduits and cable systems.



## Explosion Proof Conduit Installation Guide , PDF , Pipe

EX-PROOF ELECTRICAL PLANT: CONDUIT INSTALLATION Once, all electrical explosion proof plants were made according to the "American" system. This



### Special requirements for cable laying and distribution box installation

Conduit Systems : Schedule 80 PVC or rigid metal conduits in high-risk zones Sealed with explosion-proof cable glands at every entry/exit point Minimum 0.15m clearance from floor levels

### How to Wire an Explosion-Proof Distribution Box and

Proper installation, wiring, and usage are critical to ensuring the safety and functionality of these systems. Below, we will discuss the correct wiring methods



### How to Install Explosion-Proof Distribution Box

3. Regularly inspect the explosion-proof distribution box for any damage to components. The installation inclination of the distribution box should



## Is Flexible Conduit Required in Hazardous (Explosion)

Using explosion-proof flexible conduit in hazardous areas is not always mandatory--but in most practical scenarios, it is essential or highly

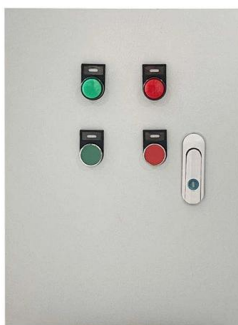


## Wiring Diagram of 1p, 1p+n, 2p in Explosion-Proof Distribution Box

Wiring in explosion-proof distribution boxes during installation and maintenance is a common task, particularly when extending connection lines.

## Explosion Proof Distribution Box: Glands vs Conduit for Safety

Choosing how cables enter an explosion-proof distribution box is one of those decisions that looks straightforward on paper but gets complicated fast once you factor in the actual site



## Explosion-Proof Electrical Distribution Boxes: Applications in

An explosion-proof distribution box is a specialized enclosure designed to contain internal explosions and prevent the escape of flames, sparks, or hot gases. It is essential to note that these boxes are



## EX-PROOF ELECTRICAL PLANT: CONDUIT INSTALLATION

It's necessary to forecast, even in straight lines, junction boxes with a cover that may be opened in order to facilitate the cables threading. The tubes, as well as the entrance into enclosures, should be



### Explosion Proof Cable Electrical Connectors Factory,

Explosion proof connector are cylinder shape union widely used to connect conduit to explosion proof enclosure, conduit, conduit fittings, junction box or device



## Contact Us

---

For datasheets, pricing, or custom high-speed optical interconnect solutions, please visit:  
<https://www.syropy.com.pl>