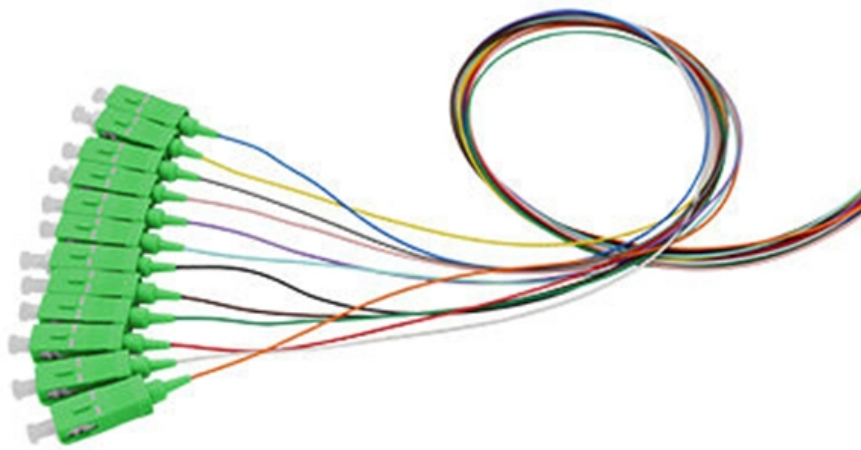


Configuring and Saving Core Switches





Configuring and Saving Core Switches



Top 5 Mistakes to Avoid When Saving Configurations on Cisco Switches

In the complex world of network management, saving configurations on Cisco switches needs attention to detail and adherence to best practices to prevent costly mistakes.

What Is a Core Switch in Networking?

Understanding the role and function of a core switch is paramount for building and maintaining a robust and efficient network infrastructure. By carefully



Configuring Cores

Configuring Cores Core files can be saved either manually by a user or automatically at the time of the fault. If a core file is created, preserve it by copying it to nonvolatile file space (such as to a host) and

What is a Core Switch?

What is a Core Switch? A Deep Dive A core switch is the backbone of a network, providing high-speed switching for data packets between different network segments; essentially, it's



8 Steps to Configure Your Network Switch

Learn how to setup a network switch with ease. Switches allow you to send and receive information efficiently and securely. Get setup today!

HP StorageWorks 2/64

View and Download HP StorageWorks 2/64 - Core Switch reference manual online. getting started and general reference guide. StorageWorks 2/64 - Core Switch switch pdf manual download. Also for:



ECS4120 Series CLI Reference Guide

After configuring the switch's IP parameters, you can access the onboard configuration program from anywhere within the attached network. The onboard configuration program can be

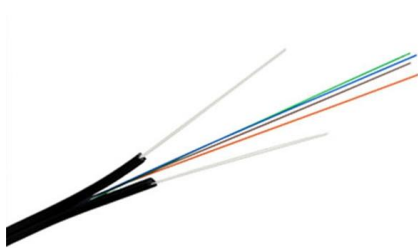


Native AC Solution: Core Switches Function as the Gateway for Wired

In addition, core switches are configured with the native AC function to manage APs and transmit wireless service traffic on the entire network, implementing wired and wireless convergence.



Equipped with a removable **Mounting Plate** inside the enclosure, enabling customized drilling and secure component mounting.



Best practices when configuring an Access switch stack to Core

I'm planning out a potential upgrade and restructure of the network switches for a small sized organization, upgrading from Aruba to Cisco switches and changing how the switches connect to

Understanding Core Switch: What It Is and How to

In the realm of system networking, three key types of switches are frequently mentioned: access switches, aggregation switches, and core switches.



Core Switches: The Pillar of Network Infrastructure

Get a closer look at core switches: the nerve centers of network infrastructure that enhance performance and facilitate growth.



Configuring Core Switches

Configuring Core Switches Log in to iMaster NCE-Campus as a tenant administrator. Choose Network Configuration > Site Configuration > Batch Configuration from the main menu, switch Current View to



What Is a Core Switch in Networking?

What Is a Core Switch in Networking? Understanding the Backbone of Your Network A core switch in networking serves as the high-capacity

Understanding the Core Switch: Key Differences and Uses

Explore the core switch's role as the backbone of your network. Discover key differences, uses, and insights into layer 3 core switch technology.



Configuring the Core Switch

Configuring the Core Switch Context In this scenario, IP addresses of the interfaces connecting the core switch to the BRASs and firewalls and OSPF need to be configured on the core

Support



Core switch 1 operates as the master to process intranet packets. When core switch 1 fails or the upstream link of core switch 1 fails, core switch 2 takes over to process intranet packets.



Introduction to Core Switch Configuration

Switches should be able to achieve wire-speed switching, which is the rate at which data is transferred on a transmission line, to minimize switching bottlenecks.

ECS5520 Series CLI Reference Guide

The switch can be configured to accept management commands from Simple Network Management Protocol (SNMP) applications such as Edge-Core ECView Pro. You can configure the



Core Configuration of a Router and a Switch in Cisco Packet Tracer

Berg IT Training - In this CCST and CCNA introductory-level video, I perform a line-by-line core configuration of a Cisco router and a Cisco switch using the command line interface (CLI) in Cisco



Basic Switching Concepts and Configuration

Basic Switch Configuration (2.1) Basic switch administration should be mastered by a switch administrator. This includes familiarity with the hardware as well as basic port configuration.

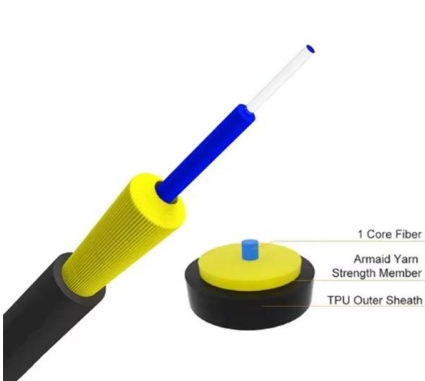


Core Switch Explained: Key Functions and Benefits

Discover what a Core Switch is, its pivotal role in network architecture, and how it boosts performance and reliability in your data infrastructure.

ECS5520 Series CLI Reference Guide

This guide describes the switch's command line interface (CLI). For more detailed information on the switch's key features or information about the web browser management interface refer to the Web



Cisco Switch Save Config: Command Line Tips and

Handling Configuration Rollbacks and Mistakes Even the most seasoned network professionals can make errors while configuring Cisco



Configuring the Core Switch

In this scenario, IP addresses of the interfaces connecting the core switch to the BRASs and firewalls and OSPF need to be configured on the core switch, so as to implement connectivity

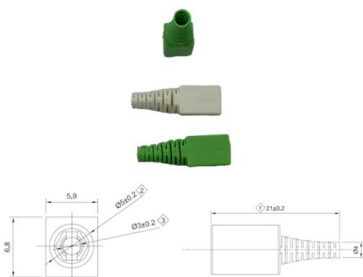


Cisco CLI Switch Command Cheat Sheet for 2025

Here's the Cisco CLI Switch Command cheat sheet you need for

Saving Running Configuration on Cisco Switch

On a Cisco switch is the command :- copy running-config startup-config available, as on a router ? I recall reading that on changing the running



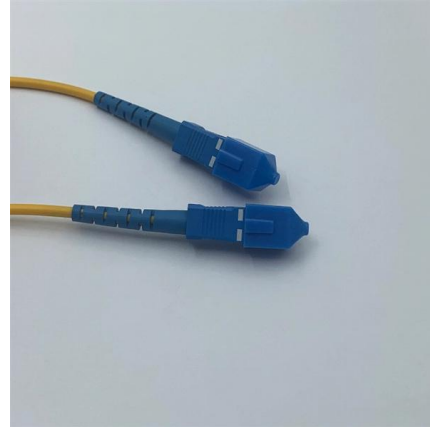
How to Configure a Cisco Switch in 10 Steps

Learn how to Configure a Cisco Switch. Follow along this Step-by-Step guide that will get you using Commands via PuTTY CLI



ECS4120 Series CLI Reference Guide

After configuring the switch's IP parameters, you can access the onboard configuration program from anywhere within the attached network. The onboard configuration program can be accessed using



Contact Us

For datasheets, pricing, or custom high-speed optical interconnect solutions, please visit:
<https://www.syropy.com.pl>