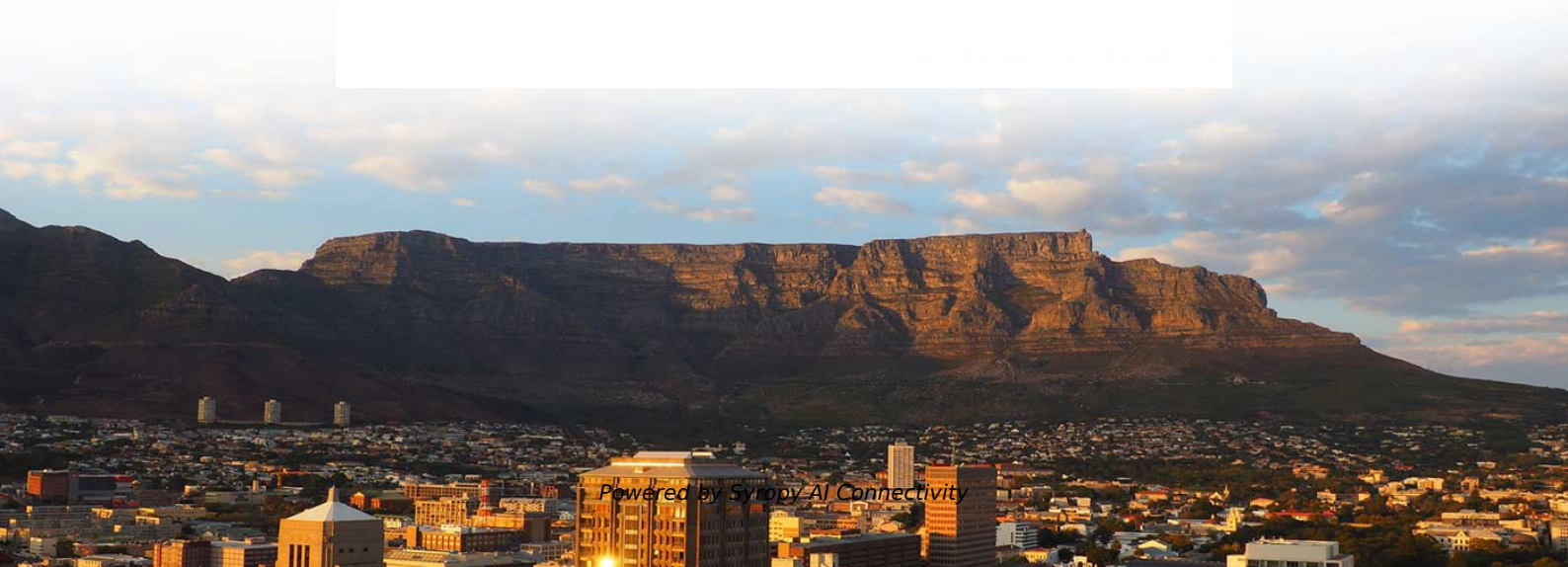


Configure H3C 10 Gigabit Port Connecting to Gigabit Optical Module



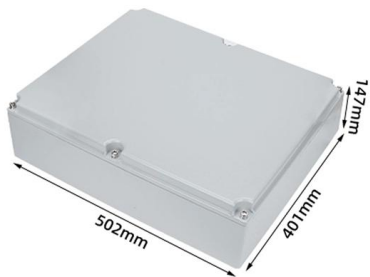


Configure H3C 10 Gigabit Port Connecting to Gigabit Optical Module



H3C All-Optical Network Technology White Paper-6W100

All-optical networks use optical signals to complete all network communication functions, eliminating the need for optical-electrical conversion within the network, thereby bypassing the challenge of

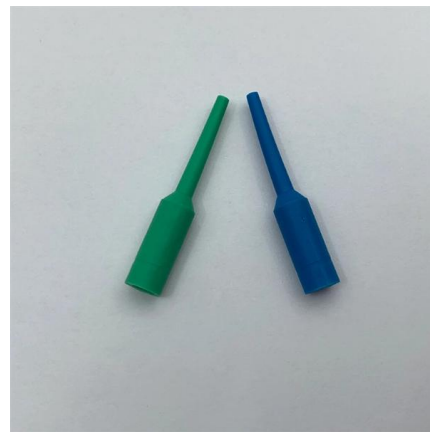


Support

Optical modules transmit signals over optical fibers. Optical transmission features low loss and is fit for long distance transmission. H3C devices support optical module models of different specifications.

Support

Remove the dust plug of the transceiver module, connect one end of the optical fiber to the transceiver module in the switch, and connect the other end into the transceiver module in the peer device.



Support

Gigabit BIDI optical transceiver modules provide a transmission rate of 1250 Mbps and use a dual LC connector. Table 69 Specifications for Gigabit BIDI optical transceiver modules (1)



Support

4 Connecting your switch to the network This chapter describes how to connect your switch to a network. The first time you access the switch, you can only log in to the CLI through the console port

Support

The H3C S5120-SI Series Ethernet Switches are intelligent, manageable, Layer 2 Gigabit Ethernet switches designed for the access and distribution layers of enterprise networks. The series delivers



Optical Transceiver Manufacturer, H3C Switch

H3C S5810 series Ethernet switch is a high-performance Gigabit Ethernet switch product independently developed by (Huasan) Co., Ltd., which provides rich



Support



You can select optical interface modules with different number of ports and select optical transceiver modules depending on actual applications and transmission distances.



Gigabit Ethernet Network Modules

Connecting Gigabit Ethernet Network Modules to the Network Warning Because invisible laser radiation may be emitted from the aperture of the port

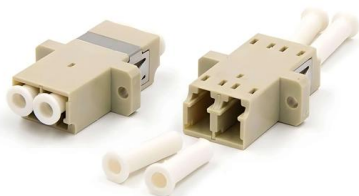
H3C 1000BASE-X-SFP QUICK START MANUAL Pdf Download

View and Download H3C 1000BASE-X-SFP quick start manual online. 1000BASE-X-SFP network hardware pdf manual download. Also for: 10gbase-r-sfp.



Support

1 Connecting your switch to the network This chapter describes how to connect your switch to a network. The first time you access a switch you must log in through the console port. On the switch,





H3C s1224 series Gigabit Ethernet switch Quick Start Manual

H3C s1224 is a full Gigabit unmanaged Ethernet switching product independently developed by H3C company. It provides 24 10 / 100 / 1000m Ethernet ports. All ports support full line



H3C MSR830 SERIES INSTALLATION MANUAL Pdf

View and Download H3C MSR830 Series installation manual online. MSR830 Series network router pdf manual download. Also for: Msr830-6ei-gl, Msr830-10ei-gl,

Switches-H3C

Switches Services integration and intelligent access H3C has been deeply engaged in the campus network for many years with various product levels. It can provide users with full-scenario product



H3C ES4200 Gigabit Switch Series-H3C

H3C ES4200 series is the latest development of Gigabit speed managed Ethernet switch. Besides high-performance access, it also offers abundant security access policy control and enhanced network

For example, you cannot configure a trunk port directly as hybrid port, but first set it as access port and then as hybrid port. By default, the port is access port.

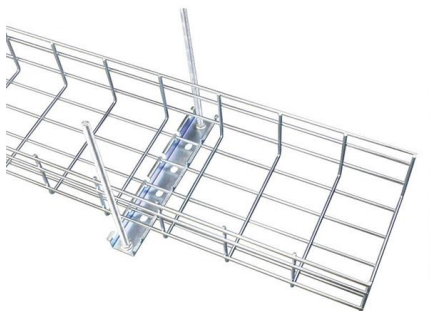


H3C Transceiver Modules User Guide

QSFP+ port to four 10G SFP+ ports. The QSFP+ optical transceiver module and SFP+ optical transceiver modules to be connected must be the same in specifications, including

H3C 1000BASE-X-SFP QUICK START MANUAL Pdf Download

Page 1 Manual version: 6PW103-20180115 BOM: 3123A1AJ 24-port 1000BASE-X-SFP + 4-port 10GBASE-R-SFP+ optical Ethernet interface card--LSQM2GP24TSSA0 1 Card identifier The card



H3C Converged All-Optical Network White Paper

the high-capacity AON and H3C 10-GE PON switches makes it easier to update network architecture, add nodes, and change rates through only simple device deployment or software control, facilitating



Interface Configuration Guide

Configuring Ethernet interfaces
 1



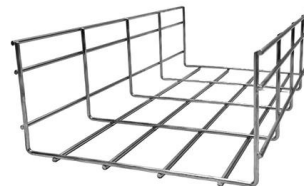
H3C S6520X-SI Series Multi-Gigabit 10GE Switches-H3C

H3C S6520X-SI series switches offer high-density 10GE forwarding and can expand 10GE ports flexibly, working at wire-speed. It provides 16/24*10/1GE autosensing



Can the SFP+ 10G port be connected to the SFP 1G

When inserting an SFP optical module with fiber optic patch cords or copper cables into the SFP port of a Gigabit switch, different transmission



H3C S6520X-SI Series

The switch offers high-density 10GE forwarding and can expand 10GE ports flexibly. It provides 16/24*10/1GE autosensing SFP+ ports, one expansion slot that support up to 9 kinds of modules

To connect a fiber port, install a transceiver module, for example, SFP or SFP+ transceiver module in the fiber port, and then connect optical fibers with LC-type connectors to the transceiver module.



Support

With high-speed CPUs, the interface modules greatly improve the service processing capability and provide independent OAM engine for link status monitoring. You can select optical interface modules

Support

4 Connecting your switch to the network This chapter describes how to connect your switch to a network. Accessing the switch for the first time The first time you access the switch you must use a



Support

For compatibility between Gigabit Ethernet interface modules and switching fabric modules, see Appendix B FRUs and compatibility matrixes in H3C CR16000-F Routers Installation



Contact Us

For datasheets, pricing, or custom high-speed optical interconnect solutions, please visit:

<https://www.syropy.com.pl>