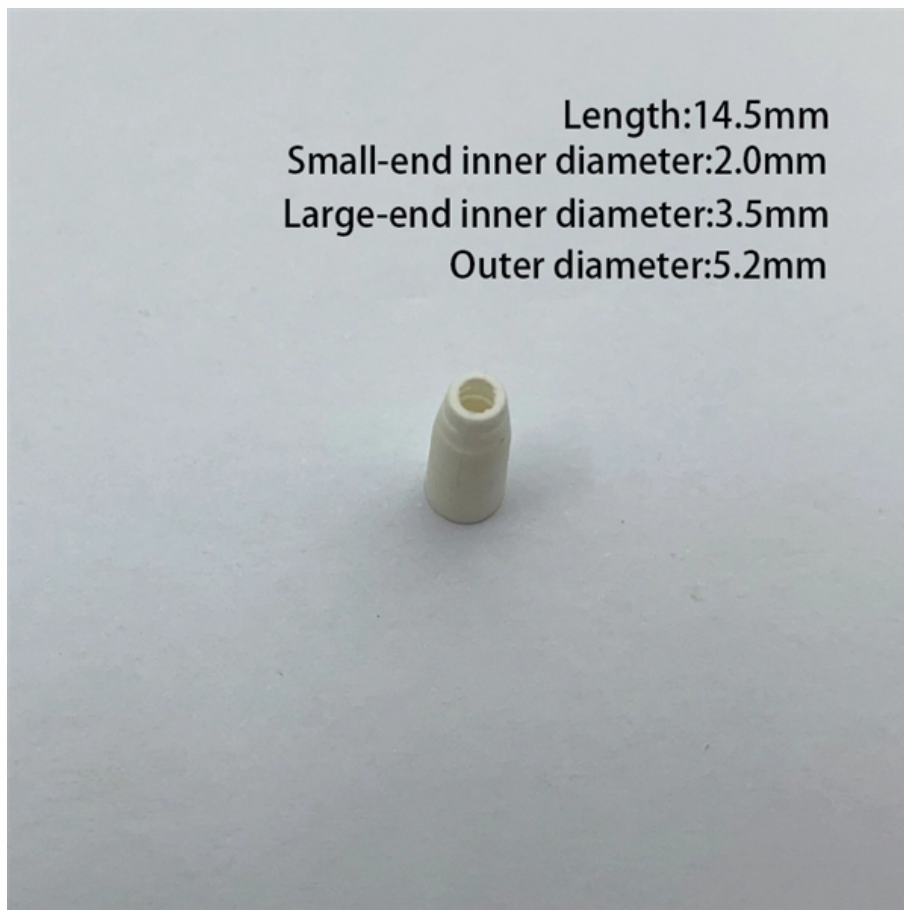


# **Configuration Points of Core Switches in Bulgaria**





## Configuration Points of Core Switches in Bulgaria

---



### Bulgaria

Everything you need to know about Bulgaria power outlets, plugs for Bulgaria, power adapters, voltage, and frequency when travelling to Bulgaria. Planning a trip to

### What is a Core Switch?

What is a Core Switch? A Deep Dive A core switch is the backbone of a network, providing high-speed switching for data packets between different network segments; essentially, it's



### Introduction to Core Switch Configuration

In this switching, transmission is determined not only by MAC address (layer 2 bridge) or source/destination address (layer 3 routing), but also by TCP/UDP (layer 4) using port Numbers that

### What Is the Core Switch?

The core switch is the central, high-capacity switching point within a network, responsible for forwarding data between different parts of the network and often connecting to multiple



### What Is a Core Switch in Networking?

What Is a Core Switch in Networking?  
Understanding the Backbone of Your Network A core switch in networking serves as the high-capacity

### ITEE::Future Data Centers Core Switches Design Challenges

ABSTRACT A data center is a collection of servers which are connected in ToR configuration. Currently data centers run on electronic packet switching technology. Due to explosive growth of data in past



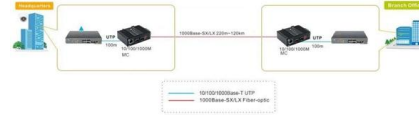
### Core Switch Vs Distribution Switch Vs Access

What Is Core Switch? A core switch is not a certain kind of network switch. It refers to the data switch that is positioned at the backbone or physical core of a network.



### Core Switch

Core switches are defined as high-capacity switches located at the top of a cloud data center network, connecting aggregation switches and providing interfaces to wide area networks (WANs).

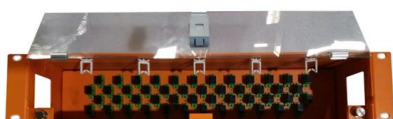


### FS Community

Hier sollte eine Beschreibung angezeigt werden, diese Seite lässt dies jedoch nicht zu.

### Network Switch Components and Technical Analysis

A Network Switch is one of the essential devices for building modern networks, capable of enhancing network performance and reliability, providing stable and efficient data transmission services for



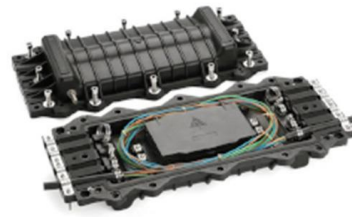
### Top 14 Network Switch Manufacturers in Bulgaria (2026) , ensun

When exploring the network switch industry in Bulgaria, several key considerations should be taken into account. The regulatory environment is crucial, as compliance with European Union standards on



## Access vs. Distribution vs. Core Switch Comparison Guide

Compare Access, Distribution, and Core switches: understand their roles, features, and differences in enterprise network hierarchy. Make informed network design decisions.



### ECS4210-28T/28P Installation Guide

The switches include a management agent that allows you to configure or monitor the switch using its embedded management software. To manage the switch, you can make a direct connection to the

### SME Network Solution Typical Configuration Examples

"Gateway + Switch + AP" Networking: Local Entire-Network Deployment (EasyWeb) "Gateway (S380) +Core Switch +Access Switch +AP" Networking: Huawei eKit Cloud Management



### FortiSwitchOS Switching Reference Architecture Guide

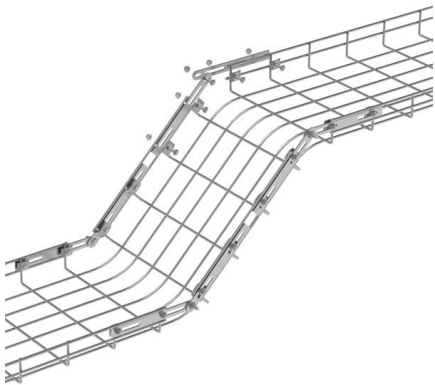
The Fortinet solutions in this guide make it easier to configure these challenging topologies. This document is not intended to be a step-by-step configuration guide. Instead, it is meant to be the





## Network Switch Components and Technical Analysis

Depending on device configurations and coverage requirements, they can be further divided into Layer 2 and Layer 3 switches: Layer 2 switches are used for internal company data flow, while Layer 3



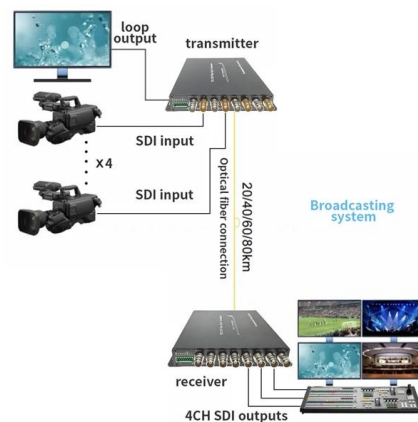
## SMB Network Design: Core vs. Distribution vs. Access Switches

Don't overspend on network hardware. Our expert guide explains core, distribution, and access switches so you can design the right network for your SMB.



## Understanding Core Switch: What It Is and How to

By taking these considerations into account, you can make an informed decision when selecting a core switch that aligns with your network's demands



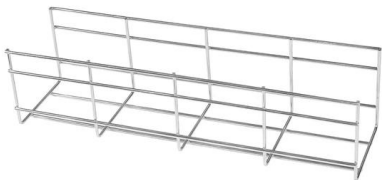
## Understanding Core Switch: What It Is and How to

In the realm of system networking, three key types of switches are frequently mentioned: access switches, aggregation switches, and core switches.



## Core Switch Explained: Key Functions and Benefits

Discover what a Core Switch is, its pivotal role in network architecture, and how it boosts performance and reliability in your data infrastructure.



### What Is a Core Switch in Networking?

Unlike access switches, which connect directly to end-user devices, the core switch focuses on aggregating and routing traffic between other

### Core Switch vs. Distribution Switch vs. Access Switch

There are different types of enterprise switches that perform various roles in these layer-based or hierarchical ethernet networks. This white paper introduces the



### Access vs. Distribution vs. Core Switch Comparison Guide

Conclusion Understanding the distinct roles of access, distribution, and core switches is fundamental to designing a robust, scalable, and performant enterprise network. While access switches provide end



**directory-list-2.4.txt/directory-list-2.4.txt at main**

Customer stories Events & webinars Ebooks & reports Business insights GitHub Skills

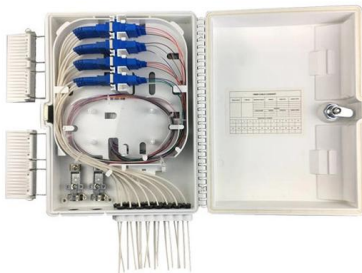


### **Core Switch: The Powerhouse of Your Network**

Core switches support L3 operations as one more important feature incorporated in these switches such as the standard switching functionality i.e.,

### **What Is an Aggregation Switch and How to Choose?**

An aggregation switch is a network device that consolidates traffic from multiple access switches, wireless access points, or other edge devices and forwards it to



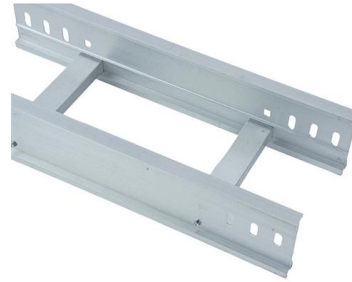
### **What Is a Core Switch in a Network?**

Define the core switch--the central, high-speed backbone required for aggregating and routing massive volumes of enterprise network traffic.



## Cisco Dealer In Bulgaria , HPE Aruba Switch , Juniper Networks

Cisco Spares, Cisco Firewall, Cisco Switches or Cisco Refurbished Products In Bulgaria, we have got it all to meet your distinct requirements. Our products are authentic as we sourced them from



### Bulgaria

Bulgaria has standardized on type F sockets and plugs. Type C and type E plugs can also be used thanks to their compatibility with type F sockets.

## Contact Us

---

For datasheets, pricing, or custom high-speed optical interconnect solutions, please visit:  
<https://www.syropy.com.pl>