

Conductive protection measures for distribution boxes





Overview

The degree of protection should be chosen according to installation standard CEI 64-8 (that implements harmonized documents CENELEC HD 384 and IEC 60364), whose section 7 refers to specific types of installations, such as: construction and demolition sites, structures designed for. Abstract: To protect personnel, equipment, and maintain continuity of service for an electrical system, protection or fault interrupting devices are required. Adequate system designs allow for the system to withstand and isolate faults while not causing additional damage and/or outages. It is intended to be energized in normal operation, including a neutral conductor, but by convention which can be touched and which is not normally live, but whose enclosure surrounding internal parts of equipment to prevent access to hazardous-live-parts from any direction: part preventing. Common hardening measures include: 1 2 3 Burying power lines protects lines from exposure to external threats including high winds and falling branches, wildfires. A pdu's safety and effectiveness is depends on how they are designed, deployed, and maintained.



Conductive protection measures for distribution boxes



Safety protection measures for distribution cabinet and distribution

Electric shock protection under normal conditions is called basic protection, which is used to prevent the danger caused by direct contact with live parts. Firstly, the live parts must be installed in the required

Storage boxes in conductive plastic

Storage boxes made of black conductive plastic that provide reliable protection against static electricity in your EPA environments. Perfect for both warehouse management and transport.

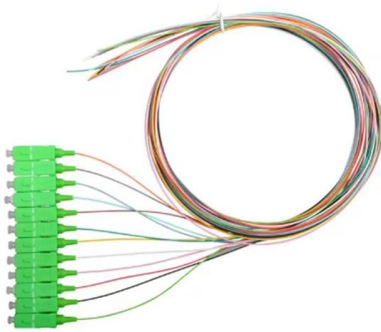


Safety requirements of distribution box

The distribution box has the characteristics of small size, simple installation, special technical performance, fixed location, unique configuration function, not limited by

Understanding the Differences and Applications of

In industrial, laboratory, and outdoor environments, instrument protection boxes and insulation boxes serve critical but distinct purposes. While both are designed to



System Protection

The major concern for system protection is protection against the effects of destructive, abnormally high currents. These abnormal currents, if left unchecked, could cause fires or explosions resulting in risk

FM guide to the selection of enclosures for distribution boards

FM enclosures for boards have an IP55 protection class. No further verification is needed if you install enclosures with an IP55 or higher degree of protection and use covers with related gaskets, along



What Is an Electrical Distribution Box? A Complete Guide

Their role in protecting circuits from overloads and faults underscores their importance in maintaining system integrity. Fundamentally,



Distribution System Protection , part of Electric Power and Energy

Summary

Distribution systems need protection against overcurrent and overvoltage. There are many reasons for conducting protection studies. Since faults or abnormal conditions result in voltages and



Circuit Protection Methods

Circuit protection includes protection from equipment overload conditions, undervoltage and overvoltage conditions, ground faults, and short circuits. Although mandated by code for any electrical

ESD Boxes & Conductive Packaging -Shipping Boxes

These packaging solutions are ideal for use in electronics assembly, repair, and distribution, where reliable static protection is critical. Our range of electrostatic discharge packaging includes



Types of protection against electric shock

These measures are used only in low-power circuits, and in particular circumstances as described in Extra Low Voltage (ELV). Fault protection Fault protection can be achieved by



Analysis of the protection level test standard for distribution boxes

Distribution boxes protect our electrical systems like bodyguards shield VIPs. When they fail, everything goes dark. Today, we'll explore how international standards translate into practical



Understanding IP Protection Ratings for Distribution Boxes: Choosing

When you're setting up electrical systems, distribution boxes are like the unsung heroes that keep everything running smoothly. You probably don't give them much thought until something

Understanding Distribution Boxes: Your Guide to Power

Weatherproof Distribution Boxes These serve specific outdoor purposes, with rain, dust, and extreme temperatures sealed shut, protecting any



Explosion-Proof Electrical Distribution Boxes: Applications in

Explosion-proof electrical distribution boxes are crucial for protecting electrical systems in environments with flammable gases, vapors, or dust. These enclosures are designed to meet strict industrial



Technical Requirements for Distribution Box in Electrical Industry

16. The distribution box system drawings are shown in the attached drawings. The above is the technical requirements of distribution box. On the premise of ensuring safety, the distribution box is still

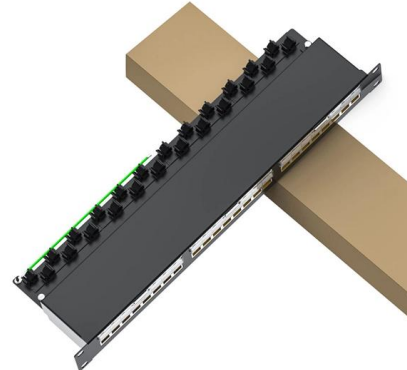


The installation requirements for the distribution box

Learn how to install a distribution box safely and correctly. Covers wiring, placement, standards, and expert tips for a compliant setup.

What is a Distribution Box? - A Comprehensive Guide

These boxes can include advanced features like modular designs, surge protection, or additional safety measures to handle complex electrical



Design requirements and standards for low voltage

Check voltage and current ratings to ensure the distribution box can handle the expected load without overheating. Use proper short-circuit protection



Best Practices in Electrical Safety: From Design to

To protect both operators and equipment these standards should be considered. It ensures adequate insulation, fault protection, and grounding measures. Safety



Distribution systems and protection against indirect contact and earth

As previously explained, in TN distribution systems the earth fault currents result to be quite higher due to the low impedance value of the fault loop; as a consequence, in the most cases, protection against

High Protective Conductor Currents in Electrical Installations

PDF file

How It Works: Electric Transmission & Distribution and Protective

Fire-protection measures may include installing fire resistant steel poles, composite crossarms, and covered conductors, or pre-treating assets near a wildfire with fire-retardant coatings or wrapping



Ex Local Control Stations & Distribution Boxes

Manufacture custom made Local Control Stations & Distribution Boxes, local control panel boards and stations, explosion protected control units, distribution



Guardians of Safety: A Comprehensive Guide to

Stringent electrical codes and regulations govern the design and installation of electrical boxes. This commitment to compliance ensures that power distribution



Distribution Protection Options to Reduce Damage and Improve

Figure 1 - Some modern protection devices have advanced features to reduce damage to distribution assets, minimize energy into a fault during reclose attempts, and save fuses to reduce the work of

Power Distribution Boxes Explained Simply

Discover the essentials of a Power Distribution Box--how it works, key types, benefits, and tips to ensure safe, efficient electrical power management.





Wiley Online Library , Scientific research articles, journals, books

Hier sollte eine Beschreibung angezeigt werden, diese Seite lässt dies jedoch nicht zu.

Key Material Requirements for Distribution Box

Learn the key material requirements for distribution box, Discover how the right materials ensure long-lasting performance and safety.



Technical Application Papers No.3 Distribution systems and protection

The protective device shall automatically disconnect the supply so that, in the event of a fault between a live part and an exposed-conductive-part or a protective conductor, a prospective touch voltage

Contact Us

For datasheets, pricing, or custom high-speed optical interconnect solutions, please visit:
<https://www.syropy.com.pl>