

Compatible 1 6T Erbium-Doped Fiber Amplifier Kyrgyzstan Supplier





Compatible 1 6T Erbium-Doped Fiber Amplifier Kyrgyzstan Supplier



Erbium doped fiber amplifier

Optical waveguides doped with certain rare earth elements are frequently used as the gain medium of a laser or optical amplifier that is close correlated to the

erbium doped fiber amplifier import export data

Top 3 Product Categories for erbium doped fiber amplifier are 854370, 851762, 851770, The above summary is based on TTV's Global Export Import data of erbium doped fiber amplifier, compiled from

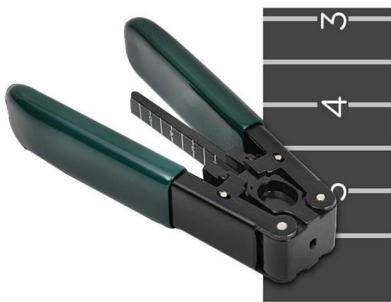
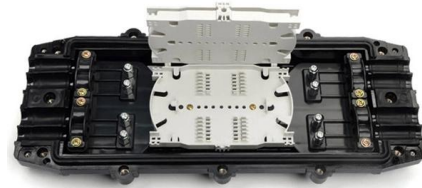


Pulsed Erbium doped fiber amplifier

Pulsed Erbium doped fiber amplifier up to 1kW peak power with linear polarization. Short or long pulses for 3D Scanning, LIDAR measurements applications.

Fiber Amplifiers - EDFA, YDFA, TDFA, amplifier

Fiber amplifiers based on erbium-doped single-mode fibers (EDFAs) are widely used in long-range optical fiber communication systems for compensating the loss of



Dual Clad Erbium/Ytterbium Doped Fiber

Dual Clad Erbium/Ytterbium Doped Fiber Unlike other cladding pump or dual clad fibers, Fibercore's Dual Clad Erbium/Ytterbium Doped Fiber (CP1500Y) was originally designed as a high power

Erbium-doped Fiber Amplifiers (EDFA)

BaySpec supplies IntelliGain® series metro erbium-doped fiber amplifiers (EDFAs) designed for OEM integration into applications that require a high gain and a low



Erbium doped fibers , Exail

Our wide range of Er-doped optical fibers allows for tailored optical amplifiers (EDFAs) performance based on your requirements. Exail Er-Doped Fibers (EDF)



1550nm Erbium Ytterbium Co-Doped Fiber Amplifier 4 Port

FWA-1550T series erbium and ytterbium co-doped high-power fiber amplifier is the latest optical transmission system for CATV FTTH. The optical input number: 1

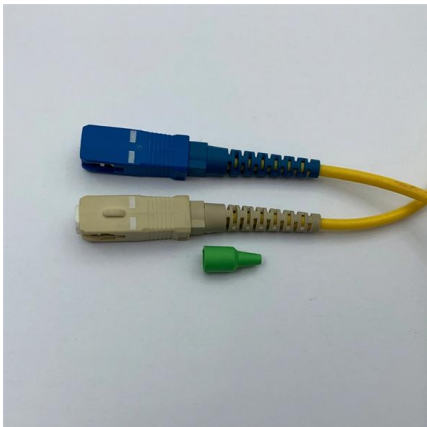
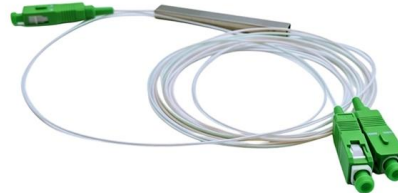


Erbium-Doped Fiber

An erbium-doped fiber amplifier is one of the most popular optical devices in modern optical communication systems as well as in fiber-optic instrumentation. EDFAs provide many advantages

Erbium Doped Optical Fiber

Specialty Optical Fiber for High Performance EDFAs CorActive delivers a full range of Erbium doped optical fibers to address a wide range of optical amplifier (EDFA) requirements for DWDM, CATV and



Basic research for designing the erbium doped fiber amplifier

2. Erbium doped fiber amplifiers 2.1. Basic models and structures Erbium-doped fiber optic amplifier systems (EDFAs) operate around the wavelength range in which losses in silica fibers are minimal.



Erbium Doped Fiber (EDF)

Introduction Erbium-doped fiber amplifiers (EDFA) by far dominate as part of the backbone of long-haul optical fiber communications due to their low noise, high and broadband optical gain . EDFA is an



Rare-earth-doped Fibers - erbium, ytterbium, thulium,

Rare-earth-doped fibers are optical glass fibers which are doped with rare earth ions. Such dopants are usually used for laser amplification.

Erbium-Doped Fiber Amplifiers (EDFAs): Foundations

The combined beam passes through the erbium-doped fiber, where the signal is amplified through interaction with the excited erbium ions. The output



Specialty Doped Fiber , Fibercore

Fibercore offers a number of different doped fibers including erbium doped fiber for various 'C' and 'L' amplifier configuration



Optical Amplifier--EDFA (Erbium-doped Fiber Amplifier)

An Erbium-doped Fiber Amplifier (EDFA) is a device used to boost the strength of optical signals in fiber-optic communication systems. In EDFA in



Erbium-ytterbium-doped Laser Gain Media

Erbium/ytterbium-doped gain media offer improved pump absorption in fiber lasers and amplifiers, therefore facilitating shorter device lengths.



Erbium Doped Fibers , Rare Earth Doped Optical Fibers

Fibercore's IsoGain range of Erbium Doped Fibers (EDFs) offer a wide selection of absorption and cut-off wavelengths to allow the best choice of fiber for each type of Erbium Doped Fiber Amplifier



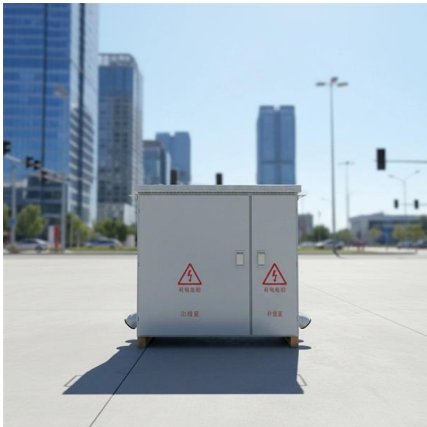
Erbium-doped Fiber Amplifiers

Erbium-doped fiber amplifiers use erbium-doped fibers. They typically operate in the 1.5-um spectral region and are most frequently used for telecom systems.



SM Erbium/Ytterbium Doped Fiber

Datasheet Fibercore's SM Erbium/Ytterbium Doped Fiber (DF1500Y) is a Single-Mode (SM) Erbium (Er) and Ytterbium (Yb) doped fiber, providing extremely high levels of pump absorption and emission

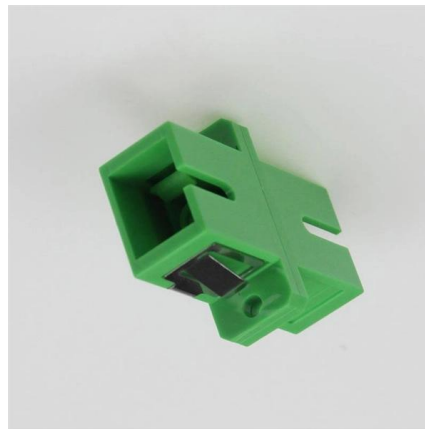


First Demonstration of Erbium-Doped Waveguide Amplifier Enabled

We demonstrate the first EDWA-enabled Terabit-class coherent optical communication with 1.6-Tb/s net bit rate per channel and 16-channel WDM transmission over 81-km fiber, proving the potential of

Erbium-Doped Fiber

Erbium doped fiber amplifier (EDFA) is defined as a crucial component in advanced wavelength division multiplexing (WDM) systems that provides optical gain over a wide wavelength range, typically



Erbium-doped Fiber Amplifiers - Buying Guide & Suppliers

This erbium-doped fiber amplifiers buying guide provides technical background, comparison of major types, selection criteria, and an overview of suppliers.

2000 Series Optigain (Erbium Doped Fiber)



Amplifier)

2000 Series Erbium Doped Fiber Amplifier from Optigain , Buy Today from Artisan. 30-Day Return Guarantee. 1-Year Warranty. Fast Shipping. Downloadable



CW Fiber Amplifiers

IPG offers Ytterbium (1030-1070 nm) and Erbium (1535-1606 nm) continuous wave fiber amplifiers that can be matched to a user-supplied or IPG seed laser. IPG CW fiber amplifiers provide output power

Erbium-doped Fiber Amplifiers

These benchtop fiber amplifiers join our femtosecond all-PM-fiber erbium-doped amplified oscillator, the FSL1550, which produces < 40 fs pulses and provides



A photonic integrated circuit-based erbium-doped amplifier

Erbium-doped fiber amplifiers revolutionized long-haul optical communications and laser technology. Erbium ions could provide a basis for



Erbium-Doped Fiber Amplifiers (EDFA)

Thorlabs' core-pumped erbium-doped fiber amplifiers (EDFAs) provide high small signal gains and output powers in a compact, turnkey benchtop package or a plug-in PXIe module with FC/APC (2.0



Erbium-Doped Fiber Amplifier Edfa Board Card Supplier And

EDFA Card is the erbium-doped fiber amplification board. Its main function is to compensate the power of the signal optical in the transmission line.

Space-Qualified Erbium/Ytterbium Fiber Amplifier

It is specially built using high reliability and vacuum compatible components consisting of semiconductor lasers, WDM, isolator, and tap monitor. The product has the advantages of high reliability, high



Contact Us

For datasheets, pricing, or custom high-speed optical interconnect solutions, please visit:
<https://www.syropy.com.pl>