

Communication Integrated ODF Patch Panel





Communication Integrated ODF Patch Panel



Fiber optic patch panel

Fiber optic patch panel Fiber optic patch panel also called ODF (Optical Distribution Frame) is designed for fiber optic communications center room to design fiber optic wiring devices, cable fixing and

ODF Fiber Optic Patch Panel, ODF Unit Box

ODF fiber optic terminal box manufactured by UnitekFiber Solution is flexible in configuration, simple in installation, easy to maintain, and is an indispensable



Optical Distribution Frame (ODF) in Telecom: Types & Uses

An Optical Distribution Frame (ODF) is a specialized enclosure designed to manage, connect, protect, and distribute fiber optic cables in telecom and data networks. Think of it as a

Fiber Patch Panel vs ODF

In this shift toward fiber-based infrastructure, understanding the differences between a Fiber Patch Panel and an ODF (Optical Distribution Frame) is essential for designing efficient,

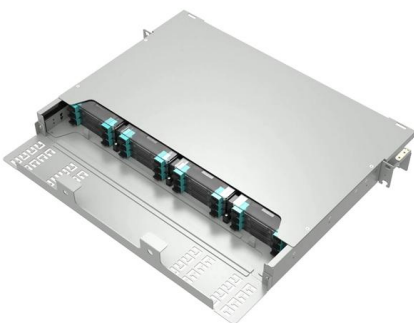


Fiber Patch Panel (ODF) and High-Density MPO

In modern optical communication networks, efficient cable organization and signal reliability are critical. The fiber patch panel, also known as

Understanding the Difference Between ODF and Patch

Understanding the distinctions between ODF and patch panel is vital to making informed decisions about your network infrastructure.



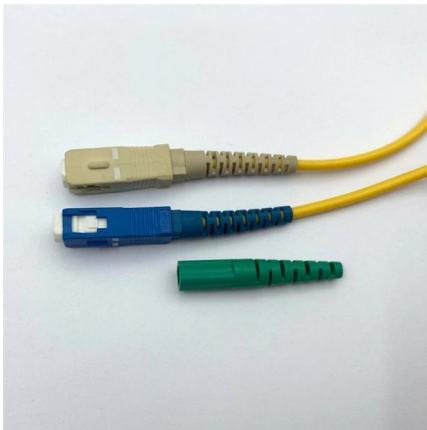
ODF

An optical Distribution Frame (ODF) or patch panel is the starting point for optical cables, most commonly found in rack cabinets in Head End (HE)/Central Office (CO)/Point of Presence

What is Optical Distribution Frame ODF?



What is ODF? ODF, also known as optical distribution frame or fiber optic patch panel, is a critical device used in optical communication for managing



ODF Module , High Quality ODF Module , Patch Panel

ODF (Optical Distribution Frame) rack mount patch panel ODU-L21 ultimate new design with the most advanced splice & patch system and cable management

Fiber Optic Patch Panel & ODF , 1U/2U/4U Rack & Wall Mount

Professional fiber optic patch panels (ODF) for FTTH & data centers. High-density solutions available in rack mount, wall mount, and sliding configurations. Support for SC, LC, and



Fiber Patch Panel vs ODF : What's the Differences

Fiber patch panel is primarily used for connecting and managing fiber optic lines and is commonly used in local networks and data centers. ODF goes beyond connecting and managing fiber connections; it



Fiber Patch Panel vs ODF (2026 Guide) - Differences

Learn differences between fiber patch panels and ODF. Covers topology placement, splicing, MPO/MTP, OS2/OM4, density, best practices, and



ODF vs Patch Panel: Functional Differences

Correct judgment depends on understanding ODFs and patch panels as distinct functional elements within a fiber distribution system, not as alternative form factors.

Optical Distribution Frame VS Patch Panel

When we talk about Optical Distribution Frame VS Patch Panel, It seems they are quite different. Learn more about the differences from ODF vs patch panel now.



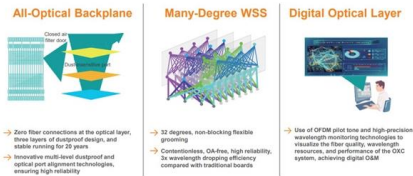
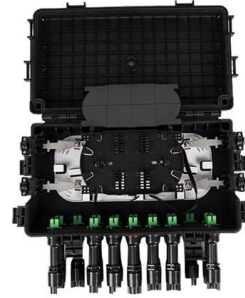
Fiber Optic Patch Panel Manufacturer , Rack & ODF Panels

Fiber Optic Patch Panels Manufacturer for FTTH & Telecom Networks Fiber optic patch panels are used to terminate, manage, and distribute optical fibers in telecom and FTTH networks. Available in rack



Everything You Need to Know About the ODF Optical

The Optical Distribution Frame (ODF) serves as the backbone of sophisticated telecommunication and data center ecosystems, aiding in efficient

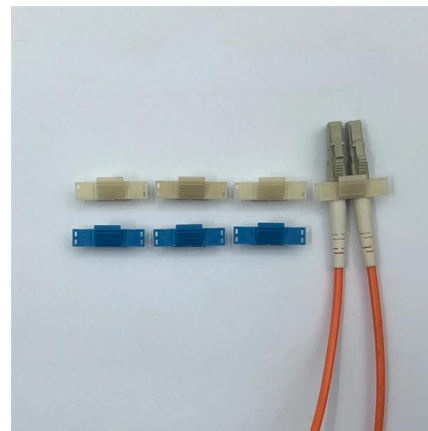


How to Choose the Optical Fiber Patch Panel/ODF

In the practical application of optical communication construction, it is recommended that the selection of an optical fiber patch panel should consider

Fiber Patch Panel vs ODF - Main Differences

(1) Fiber Patch Panel: It is suitable for small and medium-sized distribution systems of fiber to the community, fiber to the building, remote



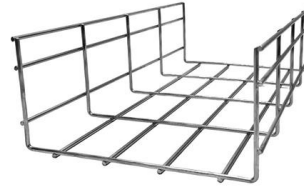
ODF Fiber Optic Patch Panel, ODF Unit Box

An optical distribution frame (ODF) is a frame used to provide cable interconnections between communication facilities, which can integrate fiber splicing, fiber



ODF vs Patch Panel

ODF vs Patch Panel Why These Options Are Compared ODFs and patch panels are often compared when fiber termination density increases and the boundary between distribution, cross-connect, and



ADTEK Science , The difference between fiber optic

Fiber optic distribution frame (ODF) is used for terminating and distributing fiber optic cables at the local end of the fiber optic communication

Optimizing Data centers with ODFs: Cross-connect

Conclusion The integration of mass-fusion splicing and SN connectivity into LISA ODF and IANOS patch panels marks a significant



Fiber Optic Patch Panels for Flexible and Scalable

Discover high-quality fiber optic patch panels from Foss - designed for flexibility, scalability, and easy installation in data centers and communication networks.



What is an Optical Distribution Frame?

What is an Optical Distribution Frame? An Optical Distribution Frame (ODF) is a key piece of fiber optic communications equipment. It is used for the



Fiber Patch Panel vs ODF : What's the Differences

When setting up a fiber optic network, two critical pieces of equipment come into consideration: the fiber patch panel and the optical distribution frame

Comprehensive Comparison: Fiber Patch Panel vs ODF

This extended definitive guide examines every facet of the Fiber Patch Panel vs ODF comparison.



Installation of ODF ,, Optical Fiber patch panel ,, Eman

From the initial setup of the ODF to connecting and managing fiber cables within the patch panel, we ensure a seamless process that minimizes downtime and



Contact Us

For datasheets, pricing, or custom high-speed optical interconnect solutions, please visit:

<https://www.syropy.com.pl>