

Common Violations of Construction Site Electrical Distribution Boxes



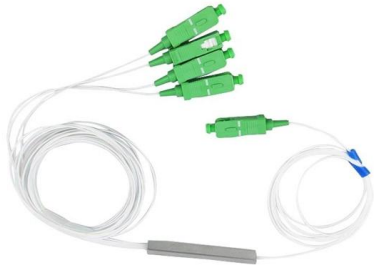


Overview

These violations often stem from improper installation techniques, inadequate planning, or simply overlooking critical safety requirements that govern electrical work. This guidance is aimed at those responsible for planning and subsequent management, and those who control the installation and use of electrical systems and equipment on construction sites. Order this product from HSE Books It explains what to do to reduce the risk of accidents involving. Electrical installations form the backbone of modern infrastructure, yet code violations remain one of the leading causes of electrical fires and safety hazards in residential and commercial buildings. It reads "Listed or labeled equipment shall be installed and used in accordance with any.



Common Violations of Construction Site Electrical Distribution Boxes



The Most Common Electrical Code Violations--And

Whether you're wiring a new home, upgrading a panel, or installing an EV charger, following the National Electrical Code (NEC) is essential. But even experienced

The Top 10 Most Commonly Cited Electrical Code

This article will review 10 of the top-cited violations from around the country based on feedback from electrical inspectors. In many instances, these violations are



The Most Commonly Found Electrical Violation During Construction

Incorrect Wiring Connections: This includes connections made outside of junction boxes, improperly joined wires, or wires not capped with wire nuts. Overcrowded Boxes: Electrical boxes



The Most Common Electrical Code Violations

Staying safe at home often comes down to details that are easy to overlook. Electrical code rules are one of those details most people don't think about until

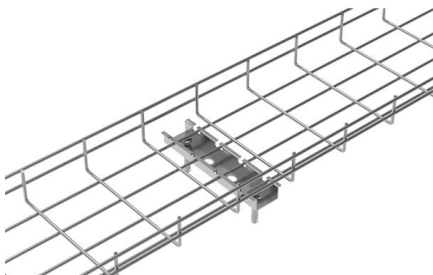
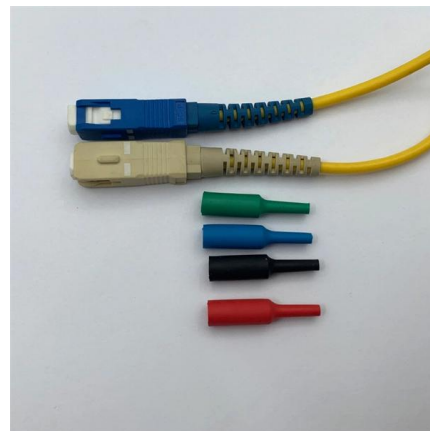


eTool : Construction

Construction » Electrical Incidents Many workers are unaware of the potential electrical hazards present in their work environment, which makes them more vulnerable to the danger of electrocution.

How To Maximize Worksite Safety When Using Power Distribution Boxes

Some common violations found with temporary power on construction sites are wiring not rated or listed for the application, and openings not covered on distribution panels. Sometimes it can



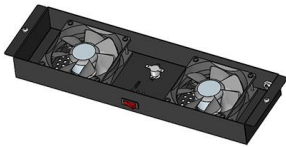
Common Electrical Code Violations and How to Correct

In this blog post, we will discuss some common electrical code violations and guide you on correcting them. 1. Overloaded Circuits: Plugging too



Common Electrical Box Code Violations and How to Avoid Them

The most serious electrical box violations involve safety issues that create immediate hazards, including improper grounding, overcrowded boxes, and inadequate support systems.



Electrical Distribution Box Installation Mistakes

In short, the installation of Electrical Distribution Boxes must comply with relevant specifications, and operators must have certain electrical knowledge and safety

8 Most Common Electrical Code Violations

Neglecting to install the right circuit breaker (or none at all) is not only an electrical code violation but will also put your and your family at high risk for a



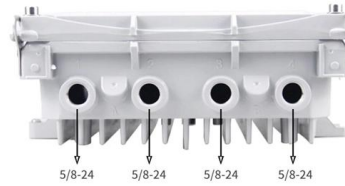
Electrical Safety in Construction Areas

This article covers the key electrical hazards, safe work practices, and essential control measures required to keep workers safe and ensure



The Most Common Electrical Code Violations--And

The Most Common Electrical Code Violations--And How to Prevent Them , Empower Engineering is an MEP engineering firm in Boise, Idaho--consulting in



Construction site electrical installations

Construction site electrical installations the role of the CDM regulations in ensuring electrical safety on construction sites.

Five mistakes when installing temporary distribution boxes and how to

Temporary distribution boxes are indispensable at construction sites, events and temporary workplaces. Yet things often go wrong when installing or renting these installations,



5 Common Electrical Code Violations in New Construction

Over the years, you may have encountered several electrical code violations that pose serious safety risks in new construction. Understanding these common



Top Electrical Code Violations (And How to Avoid Them)

Avoid costly mistakes and ensure safety with this guide to the most common electrical code violations --and how Tesdell Electric can help you stay compliant.

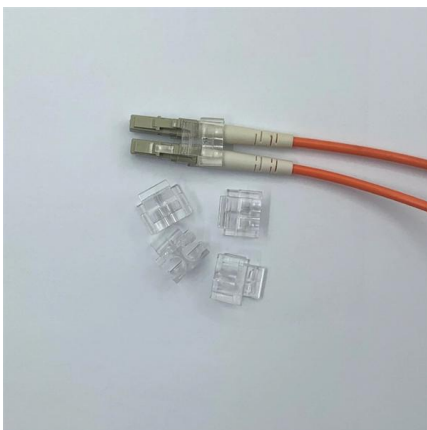


Most Common Electrical Code Violations

Electrical code violations pose significant risks ranging from property damage to life-threatening hazards. In this comprehensive analysis, we delve into

Electrical

Electrical is addressed in specific standards for general industry and maritime. This section highlights various OSHA standards and documents related to electrical hazards. OSHA Standards Visit the



Top Electrical Safety Violations

In honor of May's electrical safety month designation, here's a list of OSHA's most common electrical safety violations found in General Industry and



Common Electrical Hazards on Construction Sites

Want to make sure your construction site is as safe as possible? Here's a closer look at the most common electrical hazards you'll encounter:

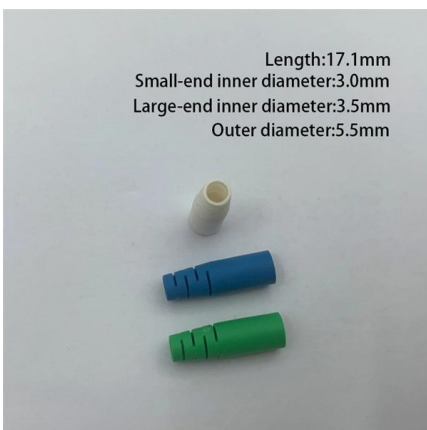
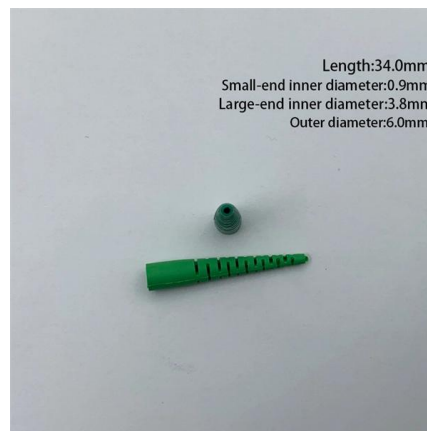


Common electrical safety violations , J. J. Keller®

Every spring, OSHA publishes a list of the top ten violations within the General Industry and Construction standards. Looking at only the top ten for General

Electrical safety on construction sites

56 Temporary electrical distribution systems may be needed on construction sites. Their temporary status does not mean that lower standards are acceptable as these systems are likely to be



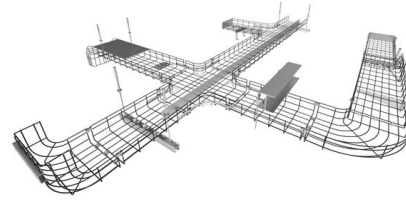
The 10 Most Common Electrical Code Violations

The top 10 electrical code violations inspectors flag most often on residential and commercial jobs. Missing GFCI, overcrowded boxes, improper bonding, and more -- with NEC



Electrical safety: Common OSHA violations

If you search OSHA's top ten violations for General Industry (excluding Construction), the electrical standard at 1910.303 makes the list. Most



The installation requirements for the distribution box

A distribution box is the heart of any electrical system. It takes the incoming power and safely distributes it to different circuits throughout your

Contact Us

For datasheets, pricing, or custom high-speed optical interconnect solutions, please visit:
<https://www.syropy.com.pl>