

Closed-loop diagram of 288-core optical cable





Closed-loop diagram of 288-core optical cable

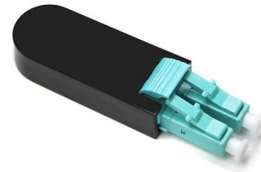
HFCL Limited



Optical Fibre containing elements laid up around central strength member Gel Filled Water blocked loose tubes Water blocked core interstices HDPE sheath as external protection

Iuron Vertical FOSC Optical Splice Enclosure Box 288 Core Fiber Optic Cable

This closure is ideal for cable splicing and offers robust protection for fiber optic connectors. The IU-ODN-FOSC-V-288-H Fiber Optic Splice Closure offers unmatched durability, flexibility, and



GCCF288 Technical Data Sheet

Product Description Universal (Indoor/Outdoor) dry core optical fiber Multi Loose Tube cable with glass yarns as strength member, Corrugated Steel Tape (Full Rodent Protected) armor and Low Smoke

#FTTx #fiberoptic FiberOptic Cable Explained: 48, 96, 144, 288 Core

Welcome to FTTX Telecom, your complete guide to Telecom Infrastructure, FTTx networks, and fiber deployment permits. Understanding Fiber Cable: Core Counts, Tube Structure & Sizes (48 to 288 Core



288 Fiber Micro Distribution with 2mm buffer tubes, Plenum

The Light Connection, Inc. 288 fiber Micro Distribution Cable is composed of twenty-four buffer tubes, a central member, aramid yarn, an aramid ripcord, and a PVDF outer jacket.

Opti-Core 144 and 288-Fibre Indoor Ribbon Cables, LSZH and

288 singlemode fibres for high density data center distribution applications. The fibres shall be ribbonized for easy mass fusion splicing and termination with 12-fibre MPO style connectors.



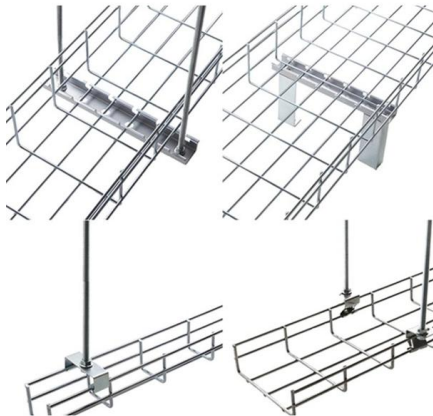
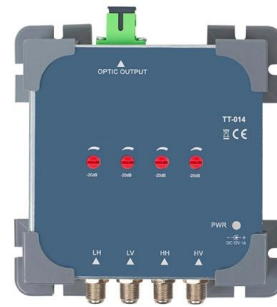
Enbeam OS2 Micro Blown G.657.A1 Fibre Cable Loose Tube 288

The cable is constructed from multiple gel filled loose tubes around a central strength member, overlaid with water blocking yarn and covered with a High Density Polyethylene (HDPE) outer jacket.

Product Spec Sheet 288TVZ-14180D20



288TVZ-14180D20 Corning LSZH UltraRibbon gel-free cables provide the ultimate solution for indoor/outdoor high-fiber-count applications. The design uses 24 ribbons within a central tube to

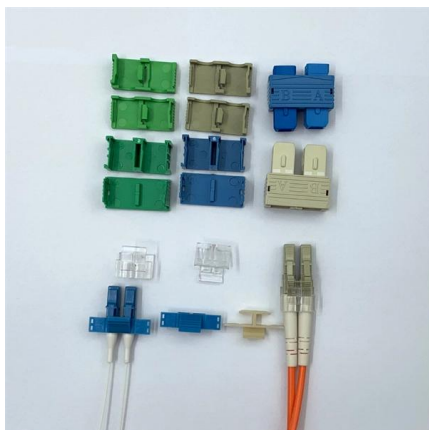


288 Fibre MicroCore Stranded Loose Tube Cable with Sacrificial Sheath

288 Fibre MicroCore® Stranded Loose Tube Cable with Sacrificial Sheath MicroCore® Stranded cable comprising 288 optical fibres contained in jelly-filled loose tubes (up to 24 fibres per tube). The tubes

288 Cores Revolutionizing Cable Connectivity!_NEWS_OPTICAL FIBER CABLE

1. Capacity The capacity of 288 Cores refers to the number of individual optical fibers contained within the cable. With 288 cores, this type of cable offers an impressive level of scalability and flexibility for



Schematic of a closed-loop fiber optic gyroscope (FOG) showing the

Download scientific diagram , Schematic of a closed-loop fiber optic gyroscope (FOG) showing the electrical cross-coupling path from the modulation voltage to the photodiode current. The FOG



Multi-Loose Tube Fiber Cable

Universal (Indoor/Outdoor) dry core optical fiber Multi Loose Tube cable with aramid yarns as strength member, Low Smoke Zero Halogen inner jacket, Corrugated Steel Tape (Full Rodent Protected)

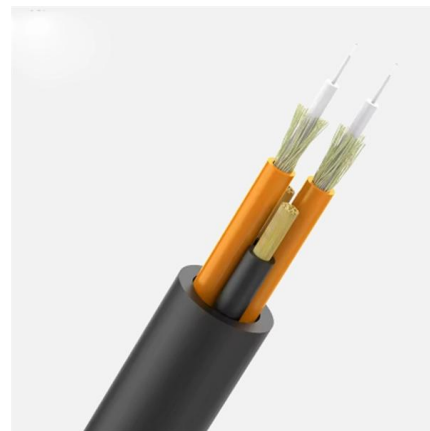


Fibre Optical Multi Loose Tube Cable, Outdoor, 288F

Applications Building interconnection, Backbone networks, Telecommunication and drop cable applications. Cross Section Drawing

TECHNICAL DATA SHEET FOR OPTICAL FIBER CABLE AIR

TECHNICAL DATA SHEET FOR OPTICAL FIBER CABLE AIR BLOWN APPLICATION (SM 24/36/48/72/96/144/288 FIBERS)



Product Spec Sheet 288ZV4-14700S53

288ZV4-14700S53 Corning RocketRibbon® Cable-250 with FastAccess® Technology represent a truly innovative breakthrough in outside plant cable technology. Providing up to 864



SINGLE MODE MULTITUBE UNARMoured FIBER OPTIC CABLE

SINGLE MODE MULTITUBE UNARMoured FIBER OPTIC CABLE -- 24F, 48F, 96F, 144F, 288F Cables



Product Spec Sheet 288FUC-T4101D20

The flexible, craft-friendly buffer tubes are easy to route in closures, and the SZ-stranded, loose tube design isolates fibers from installation and environmental rigors while allowing

Technical Specifications 12/24/48/96/144/192/216/288F Multitube

Cable Performance Standards IEC 60793, ANSI/ICEA S-87-640, Telcordia GR-20, ITU-T, RoHS, REACH.



GCCF288 Technical Data Sheet

Product feature: This cable has improved rodent protection by Corrugated Steel Tape (Full Rodent Protected). Existing out of 12 tubes with a diameter of 2.5mm with 288 fibers (12t x 24f) MM OM2.



288 Fiber Construction Diagram Guide , PDF , Optical Fiber

The document provides detailed specifications for multi-tube single sheath ribbon type armored cables, including construction diagrams for fiber counts ranging from 2F to 576F.



AshwinD24's gists · GitHub

GitHub Gist: star and fork AshwinD24's gists by creating an account on GitHub.

24-288 core armoured multi LT cable

DESCRIPTION MICROLINK multi loose cables are constructed from multiple gel filled loose tubes around a central strength member, overlaid with water blocking yarn and a water blocking tape



Enbeam OS2 Armoured CST Fibre Optic Cable Loose Tube 288 Core

The singlemode fibre is G.652.D compliant low water peak grade and offers OS2 performance and OS1 backwards compatibility. These compact, lightweight cables are extremely rugged, provide rodent



Multi-Loose Tube Fiber Cable

Outdoor dry core optical fiber Multi Loose Tube cable with aramid yarns as strength member and polyethylene outer jacket. Existing out of 12 tubes with a diameter of 2.5mm with 288 fibers (12t x



Contact Us

For datasheets, pricing, or custom high-speed optical interconnect solutions, please visit:

<https://www.syropy.com.pl>