

Clear distance between cable tray layers





Overview

When installing two cable trays in parallel at the same height, the distance between them should be no less than 0. This spacing is crucial for adequate maintenance access, ease of inspection, and ensuring proper airflow for effective heat dissipation. Some outdoor cable tray installations may have to span anywhere from 20 to 40-feet to cross roads. Extra-long spans are also used to help reduce the required number of expensive outdoor supports. The mechanical and electrical characteristics, tests, certifications, overall quality management, recommendations mentioned in this technical guide only apply to our own cable management ranges and cannot under any circumstances be transposed to si osure, overheating or.



Clear distance between cable tray layers



Cable Tray SHIB NAL

Securing cables will maintain proper spacing between cables, keep cables in the trays, and confine the cables to specific locations within trays. Those designing and installing the system must determine

B-Line series Cable Tray Design Considerations

For ladder or ventilated trough trays, the total sum of the cross-sectional areas of all the cables to be installed in the cable tray must be equal to or less than the allowable cable area for the tray width, as



Cable Tray Installation Rules (NEC 392) - Electrical Trader

The 2026 NEC introduced an important update: cable trays must have at least 12 inches of clear vertical space above them to allow for installation and maintenance access.

Cable Tray Segregation and Clearance Rules

Cable Tray clearances as per Shell DEP - Free download as PDF File (.pdf), Text File (.txt) or read online for free. This document discusses cable segregation rules

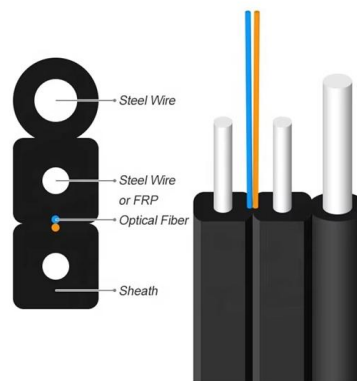


Installation Of Cable In Cable Trays: NEC, Safety

Installation of Cable in Cable Trays ensures proper routing, cable management, NEC compliance, grounding, fire safety, and load capacity.

Cable tray installation requirements-ZM Technology Co., Ltd.

(2) When the cable tray crosses with the electrical equipment, the clear distance between them shall not be less than 0.5m. (3) When two sets of cable trays are laid in parallel at the same



Best Practice Guide to Cable Ladder and Cable Tray Systems

Cable ladders and cable trays should be mounted far enough off the floor or roof to allow the cables to exit through the bottom of the cable ladder or cable tray.





Cable tray manual

One of the most important features of cable tray is that tray cable can easily be installed in existing trays if there is space available. Cable tray wiring systems allow wiring additions or modifications to be

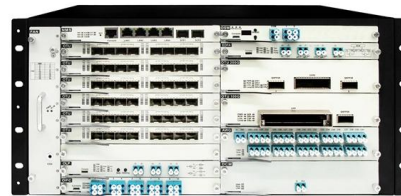


Cable Tray Support Spacing: Key Guidelines Explained

Select the Tray Type: Choose a perforated cable tray that meets the NEC specifications for your application. To start, make sure you put in the

Cable Tray Width Selection for Installations with 600 Volt Single

Section 318-11(b)(3) states that where single conductors are installed in a single layer in uncovered cable trays, with a maintained space of not less than one cable diameter between individual conductors,



Technical Guidelines for Cable Tray Installation and

1. Route Planning and Layout Principles
Coordinate with Building Structure: Cable tray routing should align with architectural design, avoiding unnecessary



Best practice guide to cable ladder and cable tray

Cable ladder and cable tray systems The following recommendations are intended to be a practical guide to ensure the safe and proper installation of



AOC
QSFP28 to 4*SFP28
100G
OM3/OM4

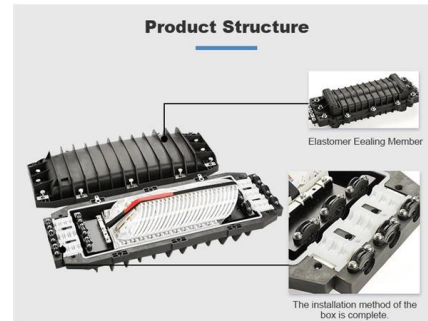


Cable tray separation , Automation & Control Engineering Forum

At least 12 inches of clear space should be provided between tray levels. We also add that instrument trays cross electrical trays at 90 degrees if the 12 inch rule "gets violated".

Complete cable tray manual for electrical engineers and

Complete cable tray manual for electrical engineers and designers (on photo: power cable management ladder tray systems assembled aluminum cable tray ladder



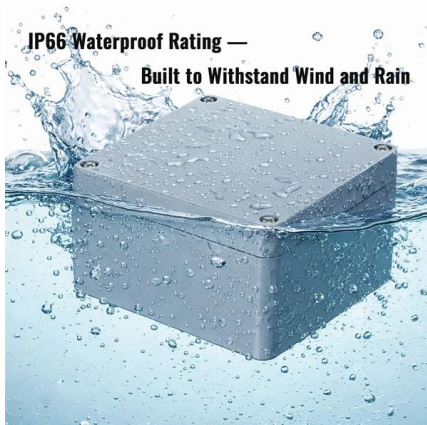
Cable Tray Size Calculation for Project Engineers

The general rule for sizing the cable tray is that all cables must be installed in a single layer, and there must be space between each pair of cables:



Cable Tray Questions , Cable Tray Institute

In hazardous dust locations (class II, division 2), it is required to space type MC and TC cables at least the larger cable diameter apart and arrange the cables in a single layer.

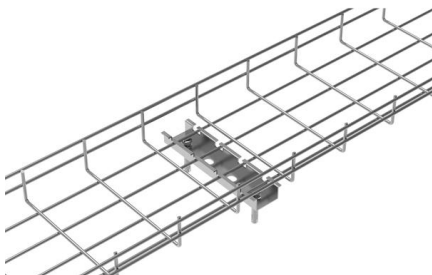


IEC60364-5-52 Cable Ladder Reduction Factor Spacing , Eng-Tips

According to DIN VDE 0298/ part 2 "Application of cables and flexible wires in power installations. Recommended values for current-carrying capacity of cables for fixed installations with

Section 27 05 36 Cable Tray for Communications Systems

3.2.2 All material to properly install the cable tray shall be provided. The cable tray system shall accommodate the weight of the horizontal and/or backbone cabling. The rung spacing shall be



Factors to Consider for Cable Tray Spacing *Safety

Cable Tray Spacing When determining cable tray spacing, factors to consider include the tray's load capacity, the weight of the cables, and the environment in which



Mastering Cable Tray Installation , Step-by-Step Guide for a Seamless

Learn how to install cable trays correctly. Get the ultimate step-by-step guide on setting up a seamless and reliable cable management system.



Core Principles for Electrical and Instrumentation Cable

Spacing Standards: Electrical (power) and instrumentation (signal/control) cable trays should maintain a minimum vertical and horizontal distance. Industry

Cable Tray Segregation and Clearance Rules

This document discusses cable segregation rules for different cable management systems. It provides guidelines for minimum separation distances between cable



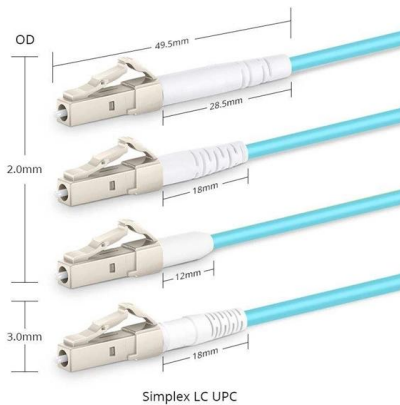
Guide to cable support systems

A cable support system consists of cable support lengths and system components, such as cable support fittings, support elements, mounting elements and system accessories. The cable support



Typical Design Philosophy of Cable Trays for Power

The trays shall be strong enough to keep the deflection of the fully loaded tray within permissible limits. In general, cable trays run in parallel to building walls and

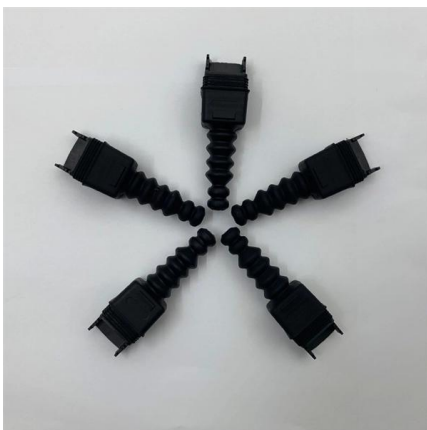


Best Practice Guide to Cable Ladder and Cable Tray Systems

This guide covers cable ladder systems, cable tray systems, channel support systems and associated supports intended for the support and accommodation of cables and possibly other electrical

GUIDE CABLE TRAYS TECHNICAL

When fitting cable trays and their accessories, the products are cut on site to create changes of direction, adjust sections, etc. Damage can also occur during handling; as a result, both the



Cable Tray Support Spacing: Key Guidelines Explained

Explore the essential cable tray support spacing requirements for safe and efficient installations. Learn NEC guidelines for perforated, ladder, and wire

Cable tray installation requirements-ZM



Technology Co., Ltd.

(1) When the cable tray enters the building from the outside, the outward slope of the tray shall not be less than 1/100. (2) When the cable tray crosses with the electrical equipment, the clear



Best Practices for Installing Cables in Trays

Learn the best practices for installing cables in trays. This guide covers essential steps, technical requirements, and key details for efficient cable

Cable Tray Spacing Standards for Installation and Safety

When planning the vertical spacing between floor-mounted cable trays, the minimum distance should be 150 millimeters. This clearance prevents potential obstruction and ensures the



Contact Us

For datasheets, pricing, or custom high-speed optical interconnect solutions, please visit:
<https://www.syropy.com.pl>