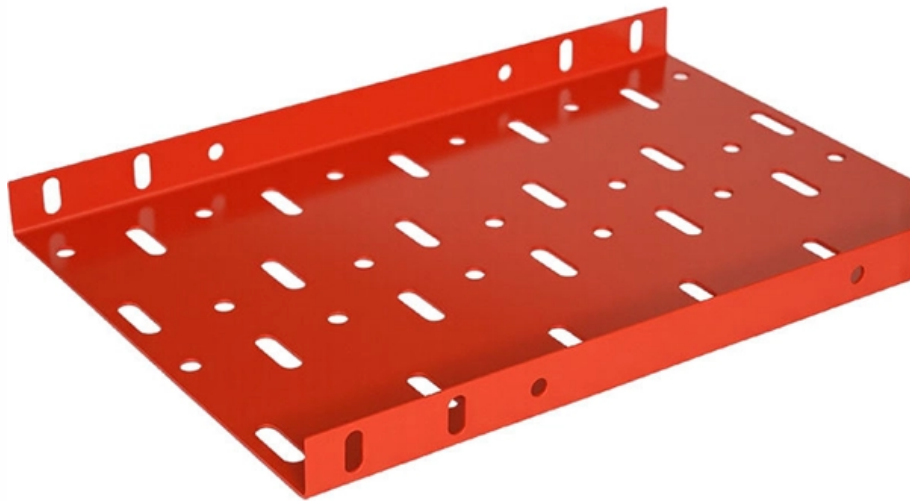


Classification of Acceptance of Communication Optical Cable Engineering





Overview

This guide covers what you need to know about IPC-A-640: the class system, key acceptance criteria, inspection requirements, and how it relates to other IPC standards. Developed by the Fiber Optic Cable Acceptability Task Group (7-31m) of the Product Assurance Committee (7-30) of IPC. Optical fiber wave guides- Introduction, Ray theory transmission, Total Internal Reflection: Attenuation, Absorption, Scattering and Bending losses, Core and Cladding losses. By a process called doping, other materials are introduced into the material that alter its index number. This document will provide an understanding of optical fibre, optical fibre cable (OFC), application standards, and key considerations that one should make before selecting optical fibre products. Typically, the first document shared with a user (Purchasing Manager, Technical Manager, and.



Classification of Acceptance of Communication Optical Cable Engineering



Acceptance Requirements for Optical Fiber, Optical Cable, and

This standard provides acceptance requirements and technical insight that have been removed from acceptance standards for cable and wire harness assemblies incorporating optical fiber, optical cable

Overview of optical fibres standardization

Readers of this document are encouraged to seek information on specific matters regarding Optical cables and components from the manufacturer or provider and to consider the Technical Standards



Mastering Acceptance Angle in Optical Communications

Introduction to Acceptance Angle The acceptance angle is a crucial parameter in optical communications that determines the maximum angle at which light can enter an optical fiber or be

Design and Critical Process Requirements for Optical Fiber, Optical

1.3 Performance / Product Classification This document recognizes that optical wiring harnesses and cable assemblies are subject to performance / product classifications by intended end-item use.



Fiber Optic Acceptance Angle: The Hidden Key to Signal Loss?

Understanding the fiber optic acceptance angle is crucial for minimizing signal loss in optical communication systems. This angle, determined by the refractive indices of the core and cladding,



BASICS OF OPTICS AND OPTICAL FIBER COMMUNICATION

Overview Of Optics And Optical Fiber Communication: Topic Covered: History of fiber optic systems, block diagram, Fiber material, fiber cables and fiber fabrication, Propagation of light in optical fiber,



How optical communication cables work and how they

In several articles, I mentioned optical fibre in the context of substation automation, protection signaling, communication between electrical



Applications and Field Acceptance Testing



of Fiber Optics Cables

The purpose of this technical paper is to present the latest applications of fiber optics as a control and communication link device and to address the methods and standards developed in field acceptance



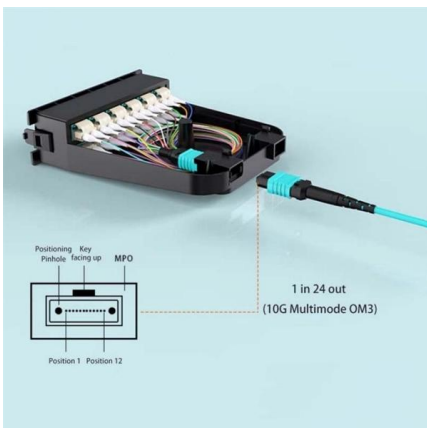
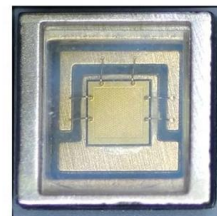
Optical Fiber Classification , Cone of Acceptance

In general, Optical Fiber Classification with high bandwidths have low NA and thus fewer modes and less modal dispersion. NAs range from 0.50 for plastic to 0.21



What Is an Optical Fibre?

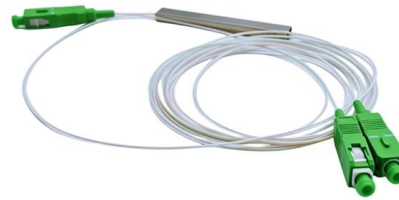
What Is an Optical Fibre? Optical fibre is the technology associated with data transmission using light pulses travelling along with a long fibre which is usually



Acceptance Requirements for Optical Fiber, Optical Cable, and

Acceptance Requirements for Optical Fiber, Optical Cable, and Hybrid Wiring Harness Assemblies Developed by the Fiber Optic Cable Acceptability Task Group (7-31m) of the Product Assurance

Acceptance Requirements for Optical Fiber, Optical Cable, and Hybrid Wiring Harness Assemblies y the Fiber Optic Cable Acceptability Task Group (7-31m) of the Product Assurance Committee (7- Users

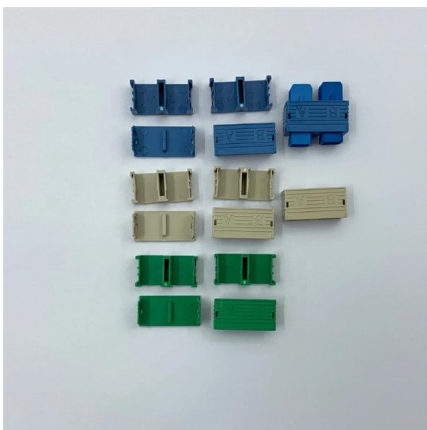


IPC-A-640 Standard: Complete Guide to Optical Fiber

IPC-A-640 explained: Acceptance requirements for optical fiber, cable, and hybrid harness assemblies. Covers classes, inspection criteria, and testing needs.

Numerical Aperture and Acceptance Angle of the Optical

"The sine of the angle of acceptance of the optical fibre is known as the numerical aperture of optical fibre." The numerical aperture determines the light



FIBRE OPTICS

FIBRE OPTICS Communication : The English word "communication" is derived from the Greek word Communicare which means exchange of information.



Understanding and Selecting Optical Fibre and Cable

In this document, the relationship between the cable features, followed standards, test parameters, and acceptance criteria are explained with examples for a better understanding of an optical fibre cable



FIBER OPTICAL COMMUNICATIONS (R17A0418)

Longer Distance: in fiber optic transmission, optical cables are capable of providing low power loss, which enables signals can be transmitted to a longer distance than copper cables.

Requirements and Acceptance for Cable and Wire Harness Assemblies

1.1 Scope This standard prescribes practices and requirements for the manufacture of cable, wire and harness assemblies. This standard does not provide criteria for cross-section or X-ray evaluation.



Acceptance Angle in Fiber Optics

The acceptance angle of an optical fiber is the maximum incidence angle of a light ray which can be used for injecting light into a fiber core or waveguide.



BASICS OF OPTICS AND OPTICAL FIBER COMMUNICATION

Optical fibers are widely used in fiber-optic communication, which permits transmission over longer distances and at high data rates than other forms of communications.



Acceptance Angle In Fiber Optics

Understanding Optical Fiber Acceptance Angles
Introduction to Optical Fibers Optical fibers are a cornerstone of modern communication technology, allowing

The differences between optical fiber grades A, B, C, and D

In summary, optical fiber grades A, B, C, and D differ significantly in terms of their end-face quality standards, which directly impact insertion loss and return loss metrics. Grade A fibers are best suited



The Role of Acceptance Angle in Modern Optical Networks

The acceptance angle is a critical parameter in optical networks, as it directly affects the signal quality. The acceptance angle is defined as the maximum angle at which light can enter or exit



UNIT-I SEC1407

UNIT - I INTRODUCTION TO OPTICAL FIBERS
Basics of optical communication system, light propagation in optical fibers, Optical spectral bands, Advantages of optical fiber communication over



Optical Fiber Cable Engineering Construction: A

By following the detailed steps outlined in this operation guide, engineering professionals can ensure high-quality communication network infrastructure that

IPC

This specification covers the performance requirements, dimensions, quality assurance criteria, test procedures, and cable codification for fiber optic cables suitable for use on commercial

DETAILS DISPLAY

Focus On Every Detail



01

Neat & Clean Layout

Cleaner arrangement of components. Easy to operate



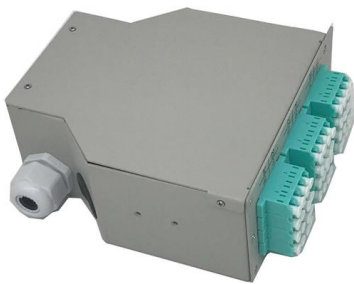
Acceptance Angle, Numerical Aperture, And Key Concepts

Optical fibers are essential components in modern telecommunication systems. They transmit information over long distances as



Fiber Notes G1B

Unit -VII Fiber Optics Engineering Physics P
Reddy M, (PhD) Website:
engineeringphysics.weebly Page 10 9.
Advantages of fiber optic communication:-



Handbook Optical fibres, cables and systems

The simultaneous availability of compact sources and of low-loss optical fibres led to a worldwide effort for developing optical fibre communication systems. The real research phase of fibre-optic

Contact Us

For datasheets, pricing, or custom high-speed optical interconnect solutions, please visit:
<https://www.syropy.com.pl>