

Classification Standards for Lighting Distribution Boxes



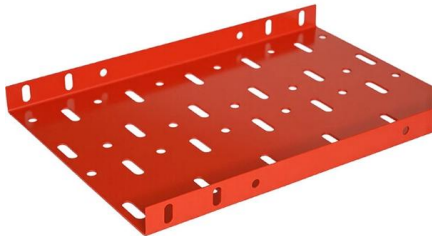


Overview

Types of Classifications: IESNA offers types based on the shape of light distribution, and NEMA provides a spectrum of types defined strictly by beam angles. Although it makes little sense (and may not be possible) to identify every single classification methodology, this chapter lists the most commonly used classifications to provide a tool that simplifies the dialogue between the various actors involved with a project. Illumination of task area in conformity with relevant standards Glare-free and convenient Lighting enhancing. The SIA-Norm 380/4 summarises the vario• Prepares and publishes International Standards for all electrical, electronic and related technologies. Covering almost every industry, from technology, to food safety, to agriculture and healthcare.



Classification Standards for Lighting Distribution Boxes



Low Voltage Lighting Distribution Box: The Heart of Efficient and

Low Voltage Lighting Distribution Boxes play a crucial role in modern electrical systems, serving as the central hub for managing and distributing power to various lighting fixtures. These

Lighting Distribution Box in the Real World: 5 Uses You'll

Lighting distribution boxes are integrated into electrical systems through stacking or process-based configurations, depending on the complexity. They must comply with regional



Distribution Box and Selection Guide

Different settings have distinct electrical requirements: Residential: Homes typically require single-phase power and a Distribution Box with fewer

Classification of lighting distribution boxes and box structure

The structure of the lighting distribution box is divided into two types based on installation methods: closed hanging type (surface-mounted) and embedded type (flush-mounted).



Superior Life® LED Panel Lighting

TYPE I Type I is a two-way distribution, long and narrow, with light beams that illuminate in essentially opposite directions. Type I distributions are best suited for the middle median of a highway or road, to

Complete Guide For Distribution Boxes Types

Distribution boxes, also known as electrical distribution boards or panels, are pivotal components in electrical systems, ensuring the safe and organized distribution of



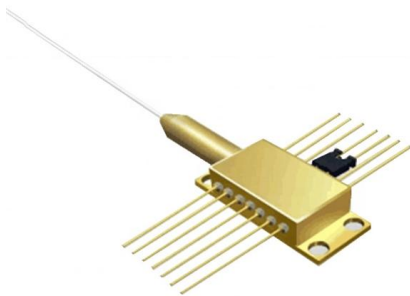
IEC 61439-3:2024 Low-voltage switchgear and controlgear

IEC 61439-3:2024 defines the specific requirements for distribution boards intended to be operated by ordinary persons (abbreviated DBO throughout this document, see 3.1.101) as follows: - assemblies



Understanding Distribution Boxes: A Comprehensive Guide

A distribution box, also known as a power distribution box or electrical distribution box, is used to distribute electrical power safely to multiple



Division 26

Free architectural library for electrical, lighting and power distribution design information, quickly access manufacturer's websites for the product information

High-Quality Electrical Lighting Distribution Boxes Explained

High-quality electrical lighting distribution boxes are indispensable components in modern lighting systems, offering a combination of safety, reliability, and efficiency.



IESNA and NEMA Light Distribution Types

The IESNA and NEMA have established classifications for light distribution types. Read about their characteristics and where you should use

Understanding Distribution Boxes:A Comprehensive Guide



Understanding its significance, this article covers what a distribution box is, how it functions, its structure, the various types available, and how it



The Lighting Handbook

In order to facilitate inspection of the lighting system, the measuring grid has been specified in the EN 12464 (Lighting of work-places) and EN 12193 (Lighting of sports facilities) standards.

1926.407

Fixed general-purpose equipment in Class I locations, other than lighting fixtures, which is acceptable for use in Class I, Division 2 locations need not be marked with the class, group, division, or operating



Main technical conditions of lighting distribution box

The lighting distribution box is a device used to supply power and control the lighting system, and its main technical conditions include: Safety: It must comply with relevant safety standards to ensure the



Overview of basic knowledge of distribution box and

The distribution box is divided into power distribution box and lighting distribution box, which is the last level equipment of the distribution system. The distribution



The Essential Guide to Junction Boxes: Types, Uses,

Learn about junction boxes: their types, uses & installation processes. This essential guide covers everything you need to know for safe & efficient



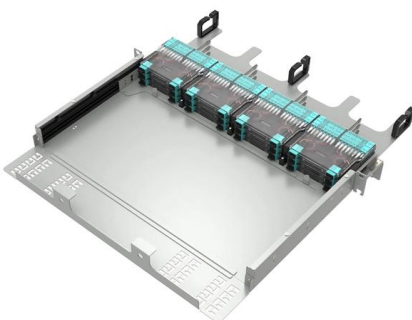
WORLD WIDE WEB JOURNAL Home

Internet communications tools Document preparation Computing industry Computing standards, RFCs and guidelines Computer crime Language types Security and privacy Computational complexity and



Light distribution categories

The selected LDC-class influences the room utilization factor: as wider the distribution, as darker the room and as lower the direct part as lower the room utilization factor; this means that more light has





NEMA Enclosure Types

NEMA Enclosure Types The purpose of this document is to provide general information on the definitions of NEMA Enclosure Types to architects, engineers, installers, inspectors and other



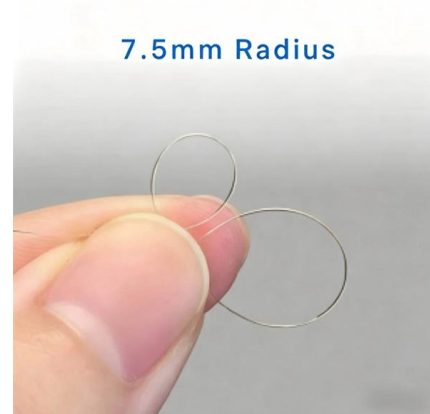
Classification of Lighting Fixtures and Main Related Standards

Although it makes little sense (and may not be possible) to identify every single classification methodology, this chapter lists the most commonly used classifications to provide a tool that



IEC Standard for Power Distribution Board Design and

Designing a power distribution board is not just about placing components inside a metal box. It requires a deep understanding of international



Understanding Distribution Boxes: Your Guide to Power

Weatherproof Distribution Boxes These serve specific outdoor purposes, with rain, dust, and extreme temperatures sealed shut, protecting any



Light Distribution Types: The Best One for You Lighting

This guide breaks down the different light



distribution types and helps you pick the best one for your high performance lighting needs.

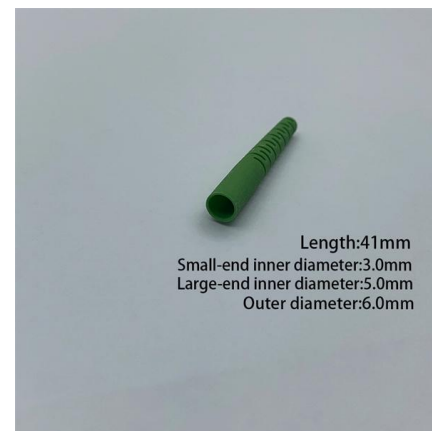


The IES Lighting Library Standards Collection

This collection establishes the testing and measurement standards for light sources, with the goal of providing a reliable and consistent system for calculating and

Overview of International Lighting Standards

ISO collaborates closely with the IEC on all matters of electrotechnical standardization and CIE on all matters of light and lighting. In the area of lighting publishes jointly with CIE and IEC.



High quality tensile aramid yarn

Protecting the fiber core and optical signal transmission High tensile and bending strength



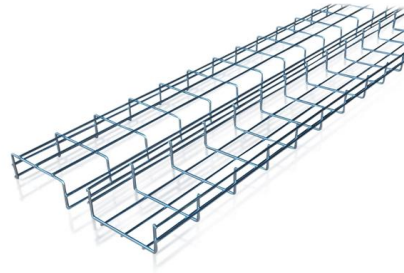
TECHNICAL SPECIFICATION FOR LT DISTRIBUTION BOX

General Technical Particulars for LT Distribution Boxes : - The L.T. Distribution Boxes should be of the dimensions as per the drawing & details in the table furnished.



46 CFR 111.81-1 -

(a) The requirements of this subpart apply to each outlet box used with a lighting fixture, wiring device, or similar item, including each separately installed connection and junction box.



Understanding Power Distribution Boxes: Types, Features, and

This guide delves into the intricacies of power distribution boxes, shedding light on their design, functionality, and regulatory standards. Readers can expect to gain a comprehensive

Contact Us

For datasheets, pricing, or custom high-speed optical interconnect solutions, please visit:
<https://www.syropy.com.pl>