

Cladding diameter of single-mode fiber





Cladding diameter of single-mode fiber

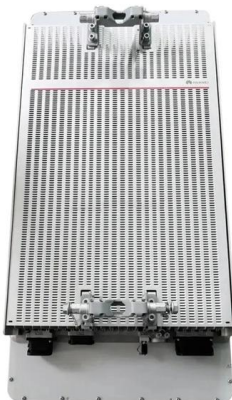
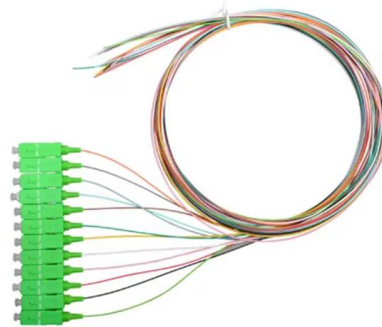


Single Mode Fiber Cable Explained

Multimode fiber is available in two sizes, 62.5 or 50 microns, and four classifications: OM1 (62.5/125 μm), OM2, OM3, OM4 (50/125 μm). The diameter of a single

Single Mode Fiber

These fibers enable single mode transmission from 400 - 680 nm and feature an acrylate jacket. The S405-XP and SM400 fibers both consist of an undoped, pure



Fiber Optics: Understanding the Basics

Single-mode fiber carries just the fundamental mode, removing modal dispersion, which is the main reason for pulse overlap. Therefore, single-mode fibers offer a

Single-Mode Optical Fiber

A single-mode optical fiber is composed of a thin fused silica core (diameter: 8.2 μm), a fused silica cladding (outer diameter: 125 μm), and protective coatings.



Single Mode vs Multimode Fiber: The Ultimate Guide to

The two main types-- single-mode and multimode fiber--serve different applications depending on distance, bandwidth, and cost requirements.



Design of Single Mode Fiber for Optical Communications

In this work, a step-index fiber with core index and cladding index has been designed. Single-mode operation can be obtained by using a fiber with core



The Ultimate Fiber Optic Cable Size Reference Chart

Single-mode fiber typically has a core diameter of 9 μm and a cladding diameter of 125 μm . Multimode fiber comes in two main core sizes: 50





Fiber Optics and Types

Single-mode fiber: In single-mode fiber, only one type of ray of light can propagate through the fiber. This type of fiber has a small core diameter

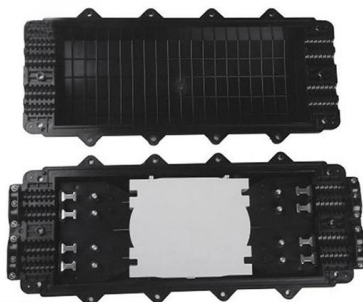


Single Mode vs. Multimode Fiber Optic Cables

There are two main types of fiber optic cables: single mode and multimode. Although they can do the same job in some instances, the different

Thorlabs · Endlessly Single Mode, Large-Mode-Area-Fiber

Unlike conventional fibers, these fibers are fabricated from a single material - undoped, high-purity, fused silica glass. The combination of material and very



Multi-mode optical fiber

Multi-mode links can be used for data rates up to 800 Gbit/s. Multi-mode fiber has a fairly large core diameter that enables multiple light modes to be propagated and



Fiber Cladding - core, cladding modes, double-clad

For single-mode fibers, the cladding usually covers a much larger area than the core, but for some multimode fibers the opposite may be true. Usually, the cladding is



Fiber Cladding - core, cladding modes, double-clad

The diameter of a fiber cladding is often chosen to be 125 μm , which is a standard value because it is large enough to make the fiber sufficiently stable but also

Fiber Optic Cable Types Explained

Single mode fiber optic cable is made up of a small diameter glass or plastic core surrounded by cladding, which is a layer of reflective material. This small



Single-mode optical fiber

Debris is visible as a streak on the cross-section, and glows due to the illumination. A typical single-mode optical fiber has a core diameter between 8 and 10.5 μm



Fiber Optic Cable Size Chart: Complete Guide

Fiber optic cable size chart with complete guide to core, cladding, and jacket dimensions, types, and specifications for networking and installation use.



6 Core Single Mode Fiber Optical Cable

The 6 Core Single Mode Fiber Optical Cable is engineered for high-performance telecommunications and networking applications, offering exceptional data transmission capabilities. This cable features

Multimode vs Single Mode Fiber Optic Cables: A Complete Guide to

Learn the differences between multimode (OM1-OM5) and single mode (OS1-OS2) fiber optic cables--speed, distance, applications, and how to choose the right one for data centers and



G.657.A2 Bend-Insensitive Single-Mode Optical Fiber

1) Product Overview G.657.A2 is a 125 μ m cladding, low-water-peak, low-loss, bend-insensitive single-mode optical fiber intended for transmission systems operating in the 1310 nm and 1550 nm



Single-Mode Fibers With Reduced Single-Coating Diameters

We theoretically and experimentally compare the optical and mechanical properties of reduced coating diameter Single-Mode Fibers (SMFs) with either dual-coating or single-coating



The FOA Reference For Fiber Optics

Singlemode fiber has a core diameter of 8-10 microns, specified as "mode field diameter," the effective size of the core, and a cladding diameter of 125 microns.

Singlemode Fiber (SMF) Core and Cladding Dimensions

The standard cladding diameter for virtually all common telecommunication fibers, including SMF, is 125 μm . This consistency is a huge advantage for the industry,



Thorlabs Single-Mode Fiber

The Single Mode Optical Fiber by Thorlabs operates in the spectral range of 400 - 680 nm with a $\text{Ø}125 \mu\text{m}$ cladding. Featuring a low attenuation of $\leq 30.0 \text{ dB/km}$ and



Multimode Fibers - optical glass fiber, large-core fibers,

What are Multimode Fibers? Multimode fibers are optical fibers which support multiple transverse guided modes for a given optical frequency and polarization.



What Is Fiber Optics? A Guide

o Single-mode fiber: This fiber has a small core that is typically 9 μm wide, and a cladding diameter of 125 μm . Single-mode fiber allows for only one

Singlemode vs Multimode Fiber Optic Cable

We breakdown the differences between single mode and multimode fiber optic cable, covering aspects like physical structure, bandwidth over



F-SMF-28 Optical Fiber

This low attenuation, step-index fiber has a uniform core refractive index and a matched-clad profile. It has a 0.14 NA, 9.2 μm Mode Field Diameter and 1310 nm,



Single-Mode Optical Fiber Geometries - Lightera

Cladding (Glass) Diameter - $125.0 \pm 0.7 \mu\text{m}$.
Cladding diameter is the outer diameter of the glass portion of the optical fiber. For telecommunications fibers, this



Single Mode vs Multimode Fiber, What is The

What is single mode fiber? Single mode fiber, short as SMF, is a fiber cable that only allows one mode of light to transmit. Typically, this fiber includes a

What Are Fiber Modes? Single-Mode vs. Multi-Mode

Multi-Mode Fiber Multi-Mode Fiber (MMF) features a significantly wider core, typically 50 or 62.5 micrometers in diameter. This larger core size supports hundreds of distinct paths or modes



Contact Us

For datasheets, pricing, or custom high-speed optical interconnect solutions, please visit:
<https://www.syropy.com.pl>