

Cisco Industrial Switch Ring Network Configuration



Strengthendoor locks

More durable and aesthetically pleasing



Grounding screw

More aesthetically pleasing and safer



Removable hinges

Make operation more convenient



Sealing strip

Dustproof and waterproof





Overview

In this demo, learn how to configure Cisco Resilient Ethernet Protocol (REP) rings on supported switches to create fast-converging, fault-tolerant Layer 2 networks. REP provides a robust alternative to Spanning Tree Protocol for industrial or ring-based. moreDevice Level Ring (DLR) is a Layer 2 protocol that enables redundancy in a ring topology, providing fast network fault detection and reconfiguration for industrial networks. The IE 3100 and IE 2000 switches selected in the Johnson Controls® catalog as access switches can be configured to manage rings using Media Redundancy Protocol (MRP). Converged Plantwide Ethernet (CPwE) is a collection of architected, tested, and validated designs. The testing and validation follow the Cisco Validated Design (CVD) and Cisco Reference Design (CRD) methodologies. The Cisco implementation of TCP header compression is an adaptation of a program developed by the University of California, Berkeley (UCB) as part of UCB's public domain version of the UNIX operating system. Proper design to ensure loop avoidance: The common link to REP and STP to run Spanning Tree Not REP.



Cisco Industrial Switch Ring Network Configuration

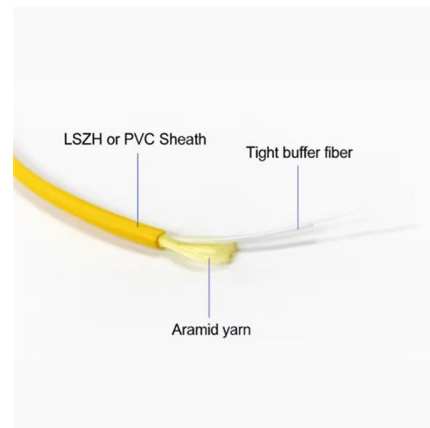


Chain and Ring Topologies on the SG550XG and SG350XG Switches

The objective of this document is to explain Chain and Ring topologies, and show you how to configure them physically and in the web-based graphical user interface.

News

Find the latest technology news and expert tech product reviews. Learn about the newest gadgets and consumer tech products for entertainment, gaming, lifestyle and more.



Configure REP Rings on Cisco Switches , Resilient

In this demo, learn how to configure Cisco Resilient Ethernet Protocol (REP) rings on supported switches to create fast-converging, fault-tolerant Layer

Redundancy Protocol Configuration Guide, Cisco

Media Redundancy Protocol A MRP is a network protocol for industrial automation that ensures fast convergence in ring network topologies. Ensures



Deploying Device Level Ring within a CPwE Architecture

In terms of deploying a switch ring into a larger network architecture, there must be a distinction between DLR-enabled ring ports and switch ports operating outside of the DLR protocol.



Demo: Configure Cisco Resilient Ethernet Protocol (REP) Rings

Discover how to build and maintain high-availability networks with REP. Follow the simple steps to configure and monitor REP rings using Cisco Catalyst Center workflows.



EtherNet/IP Device Level Ring

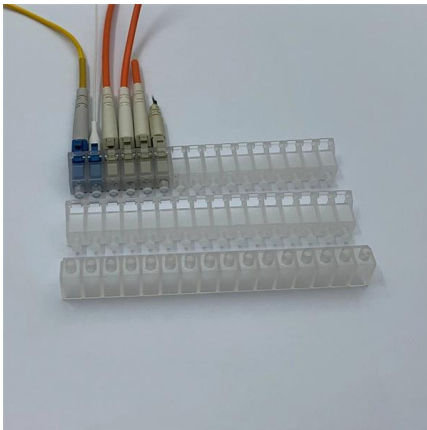
Complete the DLR configuration of all switches in the ring. If you fully connect your DLR network without a supervisor configured, the network can experience a network storm.





Setting a Ring Network

Cisco offers many variants of spanning tree on the many of their manageable (i.e. where you can connect and configure) switches. Other vendors also usually support at least some of the



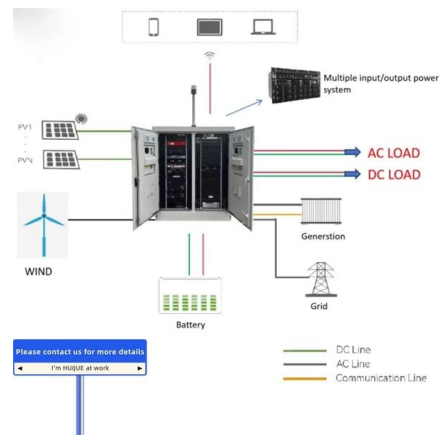
Cisco access switch applications

The IE 3100 and IE 2000 switches selected in the Johnson Controls® catalog as access switches can be configured to manage rings using Media Redundancy Protocol (MRP). See Figure 1.



Ring Redundancy Protocols for Industrial Ethernet

This article explores how redundancy ring protocols work, their key features, and a list of popular protocols, including proprietary solutions from leading vendors such



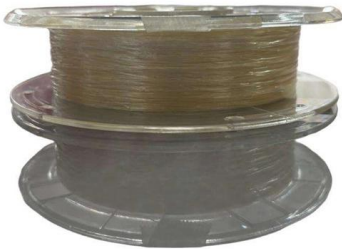
How to Configure ERPS on Industrial Network Switch

ERPS Industrial Network Switch provides protection and recovery switching for a ring topology while ensuring no loops are formed.



Deploying Device Level Ring within a Converged Plantwide Ethernet

This participation makes installation of a DLR Ring topology into existing network architectures seamless, giving the user the ability to deploy DLR ring architectures into existing network



Redundancy Protocol Configuration Guide, Cisco

Configuring MRP CLI Mode Re-enabling PROFINET
MRP Verifying Configuration Configuration
Example Feature History Information About MRP

G.8032 Ethernet Ring Protection

G.8032 Ethernet Ring Protection G.8032 ERP
Timers The G.8032 Ethernet Ring Protection
(ERP) protocol specifies the use of different
timers to



rpsupply

Hier sollte eine Beschreibung angezeigt werden,
diese Seite lässt dies jedoch nicht zu.



Industrial Lan switch how to group ring network

September 19, 2024 Industrial Lan switch how to group ring network In the industrial Internet of Things, the Industrial Lan Switch group ring network is an important network architecture method that can

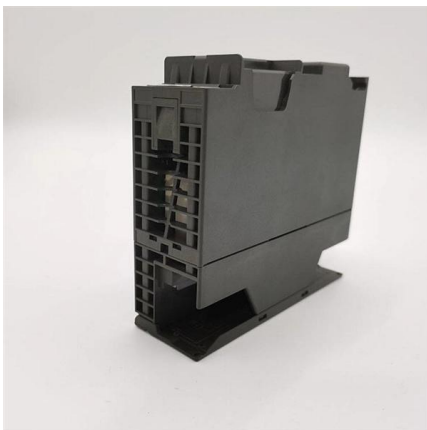
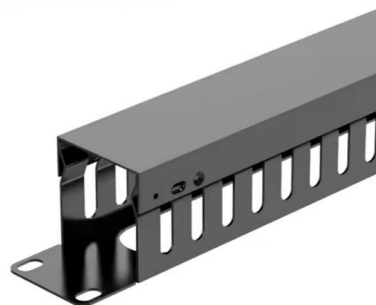


LAN Switching Configuration Guide, Cisco IOS XE 17 (Cisco NCS

G.8032 ERP Timers The G.8032 Ethernet Ring Protection (ERP) protocol specifies the use of different timers to avoid race conditions and unnecessary switching operations: Delay timers--Used by the

Network switch

A network switch (also called switching hub, bridging hub, Ethernet switch, and--by the IEEE -- MAC bridge) is networking hardware that connects devices on a



Cisco access switch applications

The IE 3100 and IE 2000 switches selected in the Johnson Controls® catalog as access switches can be configured to manage rings using Media Redundancy Protocol (MRP).

Redundancy Protocol Configuration Guide,



Cisco Catalyst IE3x00 and

We recommend that you shut down the newly created HSR ring on the switch before configuring the ring on all switches, and then reenable them one by one as shown below.

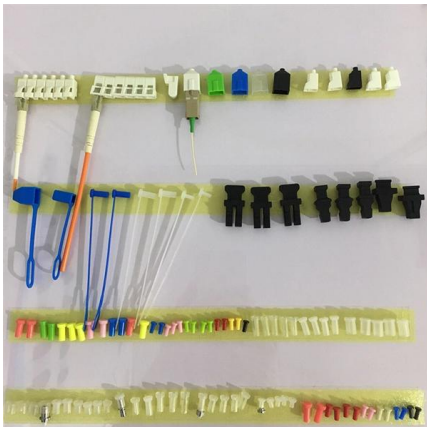


Networking and Security in Industrial Automation

In industrial automation this is configured as an option for redundant star configurations when connecting between an access switch (for example,

Cisco IE3500 Series Switch Software Configuration

Media Redundancy Protocol Media Redundancy Protocol (MRP), defined in International Electrotechnical Commission (IEC) standard 62439-2, provides fast



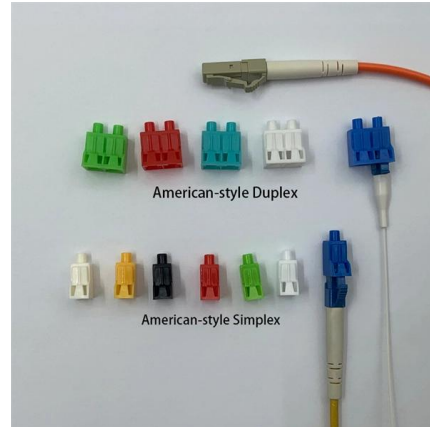
Cisco IE3500 Series Switch Software Configuration Guide, Cisco IOS

Device Level Ring Components of DLR DLR Topology Multiple Rings Redundant Gateways Cisco IE Switch Support for DLR DLR Feature Interactions Guidelines and Limitations Configuring DLR



Carrier Ethernet Configuration Guide, Cisco IOS

Carrier Ethernet Configuration Guide, Cisco IOS
Release 15S -ITU-T G.8032 Ethernet Ring
Protection Switching



Rapid Spanning Tree Protocol in Ring Network Topology

RSTP is a protocol that most automation industrial switch vendors have implemented for ensuring the availability of their industrial network and plant. The ring-based network topology

Redundancy Protocol Configuration Guide, Cisco

Device Level Ring (DLR) is a Layer 2 protocol that enables redundancy in a ring topology, providing fast network fault detection and



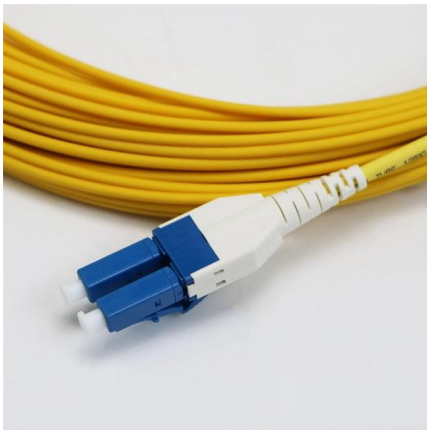
Download Cisco Packet Tracer 9.0

Download Cisco Packet Tracer 9.0.0 network simulators for CCNA and CCNP exams preparation. Cisco Packet Tracer 9.0 features new industrial switch, routers, and firewall. Download



IBOIOT-2100

A ring may have one or more redundant gateway device(s) but only one of them is active at a given time and can be used to connect to network infrastructure outside the DLR network.



Implementation of Ring Topology in Cisco

Ring topology is a kind of arrangement of the network in which every device is linked with two other devices. This makes a circular ring of

Contact Us

For datasheets, pricing, or custom high-speed optical interconnect solutions, please visit:
<https://www.syropy.com.pl>