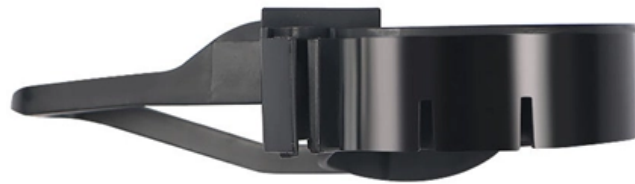


Cisco 1G Optical Module





Overview

Our Cisco SFP-1G-LH compatible transceiver uses a high-quality FP Laser transmitter operating at 1310 nm nominal wavelength and a 1310 nm PIN Photodiode receiver. This module supports DDM/DOM optical diagnostics and provides diagnostic data about the current operating conditions. The hot-swappable input/output device plugs into a Gigabit Ethernet port or slot. CISCO has an optical module product with the model number SFP-1G-LH, which supports 1G connections on 10G switch interfaces. FS Product Custom is a customized service provided by FS to meet customers' hardware and software development needs, including product compatibility and software feature development for PicOS®, AmpCon, and transceivers.



Cisco 1G Optical Module



Cisco Announces Silicon One G300, Advanced Systems and Optics

Cisco continues to transform the network into an AI innovation platform, unveiling the Silicon One G300 102.4 Tbps switching silicon.

SFP+ Optical Transceiver Modules (10G-SR/LR)

Amphenol SFP Optical Modules or SFP+ Optical Modules from Cables on Demand are Now Available in both Short Range (SR) Multimode and Long Range (LR)



Cisco optical innovations deliver resilient, scalable, efficient AI

AI is driving exponential growth in network bandwidth, reach, and power efficiency requirements. The Cisco optical portfolio meets these needs with resilient, scalable, and power



Cisco Provider Connectivity Assurance Sensor SFP 1G

The Cisco ® Provider Connectivity Assurance Sensor SFP portfolio (formerly Accedian Skylight SFP Compute Sensor) offers customers a wide variety of high



Cisco Compatible 1G SFP Transceiver Modules

All Cisco compatible 1G SFP transceiver modules are certified for functionality, reliability and performance under rigorous testing parameters. Every 1G SFP is RoHS and MSA compliant and built



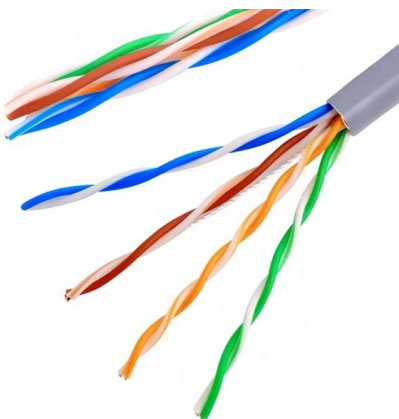
1000BASE-SX SFP 850nm 550m DOM Transceiver

The T1 Nexus T1-SFP-1G-SX is a high performance, cost effective module which have a Duplex LC optics interface. Standard AC coupled CML for high speed



Next-gen switches & servers: Everything unveiled at

The vendor claims it can reduce optical module power consumption by 50% compared to retimed optical modules.





The Ultimate Guide to SFP Modules (2026): Types,

Confused by SFP vs SFP+? Read the definitive 2026 guide on SFP modules. We explain Single Mode vs Multimode, DDM diagnostics, and how to choose the right



Buy 100% Verified Cisco 1G SFP Modules for Routers,

Cisco 1G SFP modules are industry-standard devices that efficiently link your routers, LAN controllers, and switches to the network. Get the complete product

The Optical Module Compatibility Of Cisco SFP-1G-LH

CISCO has an optical module product with the model number SFP-1G-LH, which supports 1G connections on 10G switch interfaces. The Moduletek Laboratory tested a sample of this product to



1G SFP - Optcore

1G / 1000BASE SFP Optcore's 1000BASE SFP transceiver is suitable for 1G Ethernet and fiber channel applications. Therefore, it is sometimes called 1G SFP



Cisco Provider Connectivity Assurance Sensor SFP 1G Optical

Discover how Cisco technologies drive real-world success for our customers and power Cisco's own operations and innovation. Unleash the power of AI with data centers designed for



A Quick Overview of Cisco SFP-1G-LH Module

First, Cisco SFP-1G-LH optical module can function immediately without configuration, which saves installation time by leaving out this

1G SFP Optical Transceivers , SX, LX, TX Modules

Discover reliable and versatile 1G SFP optical transceivers fully compatible with Cisco, Huawei, Juniper, Arista, and more. Choose from SX, LX, and TX modules.



Cisco Transceiver Modules

Cisco Transceiver Modules - Learn product details such as features and benefits, as well as hardware and software specifications.



SFP Optical Transceiver , SFP Optical Module , Perle

For example, by simply replacing the pluggable optical transceiver, a media converter that was originally used in a multimode network can be re-configured to



Best Price Cisco GLC-LH-SM 1000BASE-LX/LH Single Mode SFP

Use the Compatibility Tool to verify FS transceiver compatibility with your device and access test reports. Cisco SFP-1G-LH compatible SFP transceiver supports up to 10km link lengths over LC

Cisco Optical Amplifier 15454-M-RAMAN-CTP= , Cendirect

Cisco Optical Amplifier Module For Data Networking, Optical Network 1 x LC 100GBase-X Network Optical Fiber 1428 nm, 1457 nm, 1500 nm, 1567 15454-M-RAMAN-CTP=



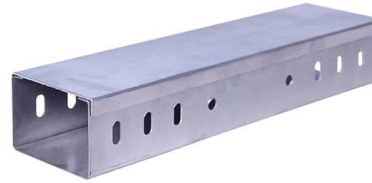
SFP-1G-LH Cisco Compatible 1G SFP Transceiver

Our Cisco SFP-1G-LH compatible transceiver uses a high-quality FP Laser transmitter operating at 1310 nm nominal wavelength and a 1310 nm PIN Photodiode receiver. This module supports DDM/DOM



1G SFP PRODUCT FAMILY

1G SFP PRODUCT FAMILY DESCRIPTION The 1000BASE SFP modules allow a wide variety of 1 Gigabit Ethernet connectivity options for enterprise, data center, and service provider applications.

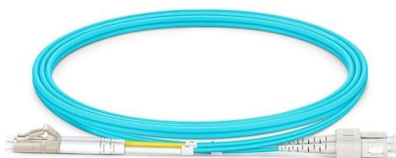
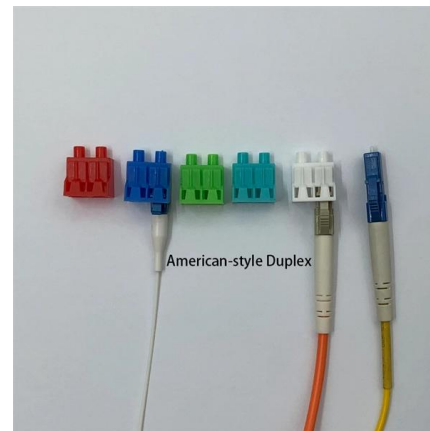


Cisco SFP Modules for Gigabit Ethernet Applications

Optical and copper models can be used on a wide variety of Cisco products and intermixed in combinations of 1000BASE-T, 1000BASE-SX, 1000BASE-LX/LH, 1000BASE-EX, 1000BASE-ZX, or

Cisco GLC-EX-SMD 1000BASE-EX 1G SFP (mini-GBIC) Fibre

Check Cisco GLC-EX-SMD Compatible 1000BASE-EX SFP transceiver module data sheet (singlemode, 1310nm, 40km, LC connector) and price list on FS , buy it now!



Cisco Provider Connectivity Assurance Sensor SFP 1G Optical

Prevent ESD Damage ESD occurs when electronic components are improperly handled, and it can damage equipment and impair electrical circuitry, which can result in intermittent or



400G Optical Modules Explained: SR4 Vs. DR4 Vs. FR4

Key differences between SR4, DR4, FR4, and LR4 400G optical modules. Expert advice from Asterfusion engineers to optimize your data center

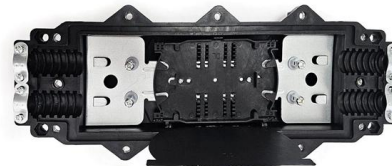


Cisco Provider Connectivity Assurance Sensor SFP 1G Copper

Never stare into open optical ports. To prevent damage to a transceiver and to any connected cables, disconnect all cables before installing or removing a module. Prior to installing a

1G SFP Optical Transceivers , Transceiver Modules

Cisco GLC-T Compatible 1000BASE-T SFP Transceiver Module (Copper, RJ-45, 100m) Cisco GLC-T compatible SFP transceiver from QSFPTEK supports up to 100m link lengths over a copper



1.25G SFP BIDI OPTICAL TRANSCEIVER MODULE

Product Summary 1.25G SFP BIDI Tx1550/Rx1490nm 120KM SMF DDM LC CISCO JUNIPER HUAWAI COMPATIBLE SFP OPTICAL TRANSCEIVER MODULE The SFP-BIDI transceivers are high

Mastering Cisco Optics: Understanding TX/RX Light Levels



Stop guessing your fiber health. Discover how to use Cisco DOM commands to measure real-time TX/RX light levels and ensure your optical



Contact Us

For datasheets, pricing, or custom high-speed optical interconnect solutions, please visit:

<https://www.syropy.com.pl>