

Circuit of Fiber Optic Sensor





Overview

Optical fibers can be used as sensors to measure, , and other quantities by modifying a fiber so that the quantity to be measured modulates the,,, or transit time of light in the fiber. Sensors that vary the intensity of light are the simplest, since only a simple source and detector are required. Jose Miguel Lopez-Higuera: Handbook of Optical Fiber Sensing Technology, John Wiley & Sons, 2002. Due to its small size, low cost and ease of fabrication leading it to replace traditional sensors which were used frequently before th birth of fiber optic sensors. Further there are many points why fiber optic sensors are used in place of traditional size and. At the heart of this technology is the optical fiber itself -- a hair-thin cylindrical filament made of glass that is able to guide light through itself by confining it within regions having different optical indices of refraction.



Circuit of Fiber Optic Sensor

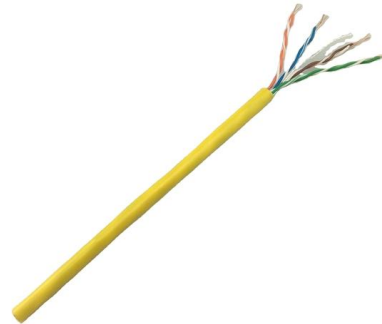


What is a Fiber Optic Sensor?

A fiber optic sensor operates with an optical fiber cable connected to a dedicated light source. These sensors offer great mounting flexibility and can be used in a

Self-Diagnosing Circuit Breakers Using Embedded Optical Fiber Sensors

The research has discussed the design of a self-diagnostic circuit breaker system with embedded optical fiber sensors. The system implements real-time signal processing, advanced power protection and



Electrical Asset Condition Monitoring , Rugged Monitoring

Discover AI-powered electrical asset condition monitoring. Improve power grid reliability with real-time data-driven insights.

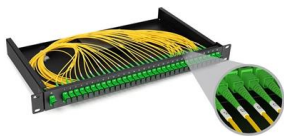
The Potential of Fiber Optic Technology in Automotive

Both glass and plastic optical fibers are recyclable, providing a greener alternative to traditional wiring materials. Fiber optic technology not only meets



Fiber Optic Sensors: Principles, Types, and Uses

Fiber optic current sensors work by detecting changes in light as it interacts with a magnetic field created by an electrical current. These sensors rely



Optical Fiber Sensors Guide

Optical fiber sensors offer attractive characteristics that make them very suitable and, in some cases, the only viable sensing solution. Some of the key attributes of fiber sensors are summarized below.



Fiber Optic Sensors: Types, Working Principle

Explore fiber optic sensors: their working principles, types (intrinsic, extrinsic, hybrid), and diverse applications in mechanical, chemical, and structural health monitoring.



Fiber Sensors

2. Superior Environmental Resistance The sensing section of a Fiber Unit has no electric circuits. This makes it highly reliable even under severe environmental

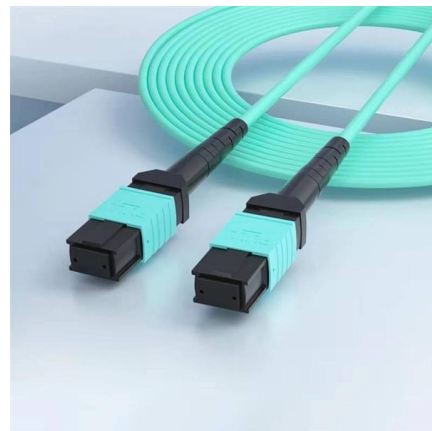


Optical Fiber Sensors Guide

The principle of operation of a fiber sensor is that the transducer modulates some parameter of the optical system (intensity, wavelength, polarization, phase, etc.) which gives rise to a change in the

The role of fiber sensing technologies in MEMS/MOEMS

Micromachining technology has potential for fabrication of precision-defined integrated optic (IO) circuits and offers easy alignment procedures for optical fibers, reducing packaging costs. The main



(PDF) Optical Fiber Sensors: Working Principle,

Brief theory of sensing principle, fabrication method, applications, advantages and disadvantages of the different fiber-optic sensors, are addressed.



RS PRO 2040681 Photoelectric Sensor Fiber Optic NPN 0

Fiber optic sensors are a type of proximity sensor that have an optical fiber connected to a light source to allow for detection in tight spaces or where a small profile is beneficial. The optical fiber is a



Optical fiber sensor for human joints by Lego MINDSTORMS

Circuit Design and PCB Development: INA128-Based Circuit: A custom circuit based on the INA128 instrumentation amplifier was designed to amplify the signals from the optical fiber sensor.

CHAPTER 09 FIBER OPTIC SENSORS

communication system via using fiber optics there was a great demand to measure and sense the rate of data transmission, change in phase, intensity, and wavelength and in the case of incentive



AOC
QSFP28 to 4*SFP28
100G
OM3/OM4



Fiber Optic Sensors: Types, Working Principle

This article explores the different types of Fiber Optic Sensors, their working principles, and various applications. We'll delve into Intrinsic, Extrinsic, and



Fiber Optic Sensors: Fundamentals, Principles & Applications

Extrinsic Fiber Optic Sensors Fiber is Only an Information Carrier To and From a Black Box Light Signal Generation in Black Box Depending on the Arriving Information



Optical Fiber Sensors: Working Principle, Applications,

Brief theory of sensing principle, fabrication method, applications, advantages and disadvantages of the different fiber-optic sensors, are addressed.



Fiber Optic Sensors: Fundamentals, Principles & Applications

Fiber serves as a continuous sensing element. Sensing is based on. $\{ 1 + \ln(/) z + \ln(/) \}$ Equipped with safety features and remote fault monitoring.



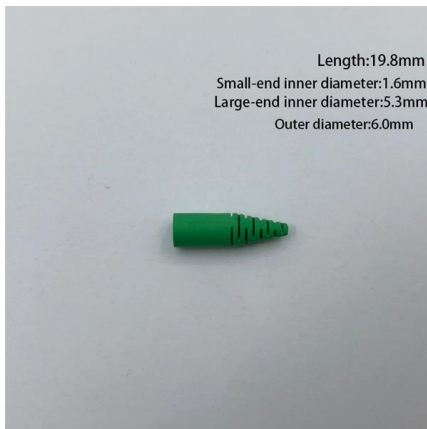
CHAPTER 09 FIBER OPTIC SENSORS

CHAPTER 09 FIBER OPTIC SENSORS INTRODUCTION: After the invention of LASER in 1960 a new branch in fiber optics developed in parallel with the communication which is also a well known and



SOLDER MASK FAULT FIBER OPTICS SENSOR

A processor is used to find problems in the solder mask of a printed circuit board (PCB). It sends an optical beam into special channels called optical waveguides that are covered by a protective layer



circuito en serie con potencimetro Fiber Optic Sensors

Fiber Optic Sensors D10 Expert: Small Object Counter; Requires PFCVA Fiber Optic Array; Consult factory; Input: 12-24 V dc; Output: NPN; 6-pin M8 QD Datasheet Non-Stocked 1 \$302.00 Buy Min.:

Fiber-optic sensor

Optical fibers can be used as sensors to measure strain, temperature, pressure and other quantities by modifying a fiber so that the quantity to be measured modulates the intensity, phase, polarization, wavelength or transit time of light in the fiber. Sensors that vary the intensity of light are the simplest, since only a simple source and detector are required. A particularly useful feature of intrinsic fiber-optic sensors is that they can, if required, provide distributed sensing over very large distances.



Optoelectronics

Electronic light sensors Optoelectronics (or optronics) is the study and application of electronic devices and systems that find, detect and control light, usually considered a sub-field of photonics. In this



Optics, Lasers, Imaging , News, Products, Events

Photonics Spectra is a global photonics resource and magazine with news, products, research, and applications covering optics, lasers, imaging, and sensing.



DwyerOmega , Shop for Sensing, Monitoring and

Explore DwyerOmega's comprehensive range of industrial sensing, monitoring, and control solutions from thermocouples to pressure transducers engineered for

Fiber Optic Sensor : Types, Working, Interfacing & Its

Fiber Optic Sensor : Working, Interface with Arduino, Types & Its Applications November 28, 2022 By WatElectronics Fiber optic sensor is a new





Photonics21 - A Key Enabling Technology for Europe

20 May 2026 , Other Fiber Optic Sensing in Precision Agriculture 21 May 2026 , Other Optical Fiber Sensors for Biomedical Applications 21 May 2026 , Other

Fiber Optic Sensor : Types, Working, Interfacing & Its

In the following circuit, two optical fibers are arranged very close to each other. Once a light ray is infused into one of the optical fibers, then it will



Eaton

Eaton Enhanced 50 Series Photoelectric Sensor, Sensor dist. depends on the fiberoptic cables, Iso SS Relay, 300 mA at 240 Vac/Vdc, 4 Pin Dual Key Micro Pigtail Connector, 12-240 Vdc 24-240 Vac

Contact Us

For datasheets, pricing, or custom high-speed optical interconnect solutions, please visit:
<https://www.syropy.com.pl>