

Circuit connection to distribution box





Circuit connection to distribution box



Size determination, installation method and wiring mode

The distribution box is the central hub of the home circuit and the general control of our daily power consumption. It is an indispensable electrical equipment. If there

A Definitive Guide To Distribution Boxes

Power distribution boxes are beneficial because they eliminate the requirement for each output device to be connected directly to the power source. As a result, there's no reason to utilize



Distribution Box: Types and Functions , Axis-Electricals

A distribution box houses all the contact breakers, earth leakage units, doorbells, and timers. The electrical power supply comes from the network to the building

Wiring of the Distribution Board with RCD (Single Phase)

Electrical Wiring Installation of the Distribution Board with RCD (Single Home Phase Supply From Utility Pole & Energy Meter to the Consumer Unit. How to Wire RCD



How to wire a DB - Distribution Board Wiring -

Distribution Board or DB is an electricity supply system or a common enclosure that distributes the electrical power feed into subcircuits. It includes



How to Wire a Home Distribution Box

How to Wire a Home Distribution Box - Step-by-Step , Distribution DB box wiring diagram
Welcome to our channel! In this video, we'll walk you through the



Distribution Box Wiring Steps

?Wiring Direction?: Wiring between the main circuit breaker and each branch circuit breaker in the box generally goes on the left, and the wiring out of





The Complete Guide to Distribution Box: Installation, Types & More

Mount individual circuit breakers in the designated positions within the distribution box. Each breaker should match the current rating and type required for its specific circuit.



How to Wire a Home Distribution Box

In this video, we'll walk you through the process of wiring a home distribution box with a detailed connection diagram.

How To Wire A Distribution Board (DB Board): A Step-By-Step Guide

A distribution board (DB board), also known as a fuse box or breaker panel, is essential for managing electrical circuits in a building. It distributes electrical power from the main supply to



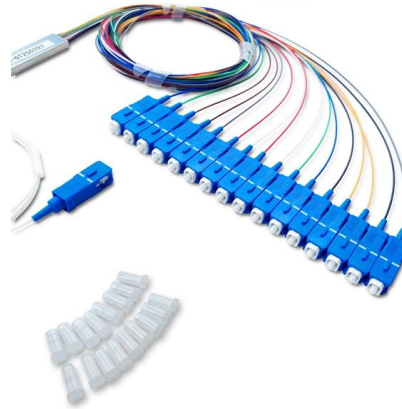
How to Wire a Single Phase Breaker Box: Step-by-Step

A typical wiring diagram for a single-phase breaker box would include the diagram of the breaker box itself, showing the various circuit breakers and their ratings. It



What Is a Distribution Box?

Some distribution boxes have a longer cord than others. When choosing a distribution box, make sure the cord is long enough to reach the main



Single Phase Distribution Box (DB) Wiring Diagram and

Hey, in this article we are going to see the Single Phase Distribution Box Wiring Diagram and Connection Procedure. A distribution board or

Home Distribution DB Box Wiring Connection Diagram

Welcome to our channel ?@Electricalgenius? In this video, we'll take you through a detailed step-by-step guide on wiring a home distribution DB (Distribution Board) box.



Distribution Box Installation: A Complete Guide to Safe

The distribution box, often referred to as a breaker box, fuse box, or electrical panel, is a critical component of any electrical system. It acts as the central hub for



Distribution db box wiring diagram

The main supply cable comes into the board and is then distributed to the breakers and from there to all the circuits lights fan plugs etc. various sizes of distribution boards are available.



How to Wire a Home Distribution Box

In this video, we'll walk you through the process of wiring a home distribution box with a detailed connection diagram. Whether you're an electrician or a DIY

The installation requirements for the distribution box

Learn how to install a distribution box safely and correctly. Covers wiring, placement, standards, and expert tips for a compliant setup.



A Step-by-Step Guide to Wiring an Electrical Panel Box

Find out how to properly wire an electrical panel box with a comprehensive diagram and step-by-step instructions.



How to Install a Distribution Box--A Comprehensive

Distribution boxes are used for power distribution, circuit protection and cable management, while junction boxes are only used for wire connection



5 Room Distribution box wiring with all Protection Device

single phase distribution board wiring In this video, I try to explain the concept of single phase house wiring system with all electrical protection device.

How to Install a Cable Distribution Box Safely and

How to Install a Cable Distribution Box Safely and Correctly? In modern electrical systems, cable distribution boxes (also known as electrical



Understanding Circuit Breaker Wiring Configurations in

Circuit Breaker Wiring Methods Live (L) Wire Connection: In a distribution box setup, the incoming live wire (also known as phase or hot wire,





How To Connect A Distribution Box

Learn how to connect a distribution box with this easy-to-follow, step-by-step guide. From tools and materials needed to common installation mistakes and solutions, this comprehensive article will



Contact Us

For datasheets, pricing, or custom high-speed optical interconnect solutions, please visit:

<https://www.syropy.com.pl>