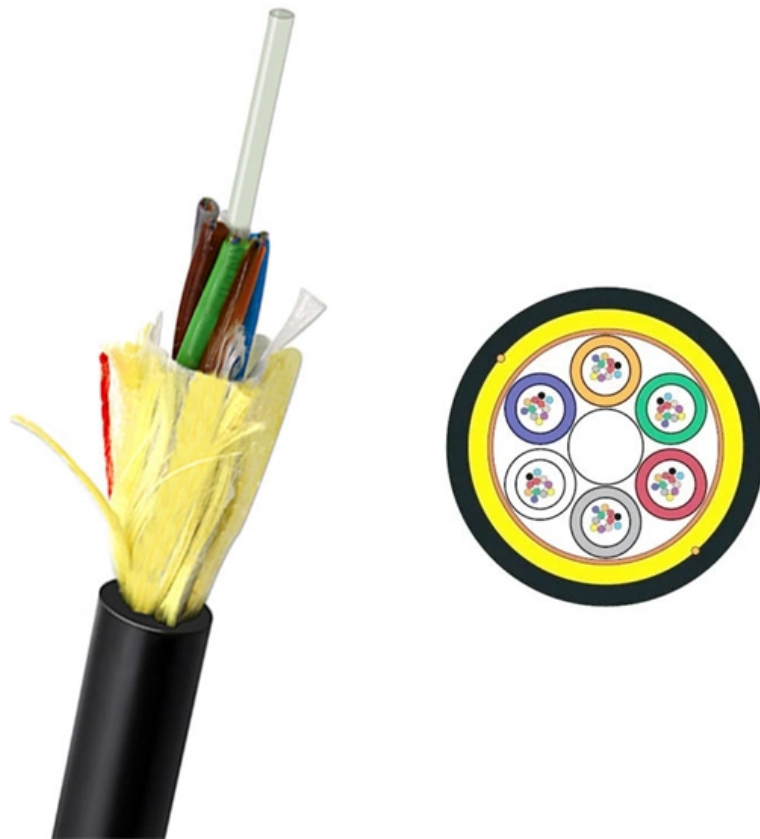


Circuit Power Distribution Box





Circuit Power Distribution Box



Distribution Boxes Explained: Types, Functions, and

Beyond simple power distribution, these units provide essential safety measures that protect against electrical hazards like short circuits and power



What is an Electrical Distribution Box? A

The distribution box helps distribute load evenly across different circuits, preventing overload. Protects Against Short Circuits and Surges: With

Distribution board

A distribution board (also known as panelboard, circuit breaker panel, breaker panel, circuit breaker, electric panel, fuse box or DB box) is a component of an electricity supply system that divides an



The Ultimate Guide to Distribution Box Types

In any electrical system, the distribution box is the heart and brain, a critical component that safely manages and distributes power from the main source to



Amazon : Breaker Box

Mollom 6 Way Power Distribution Box with Bus Bars and Din Rail for Miniature Circuit Breaker MCB, Waterproof IP66. Padlock Available for Indoor and Outdoor Use Add to cart



How Does a Power Distribution Box Work: A Guide

Every industrial or commercial facility depends on a reliable and well-regulated electrical system. At the heart of this network lies a power distribution



Distribution Box Guide: Types, Components & Solutions

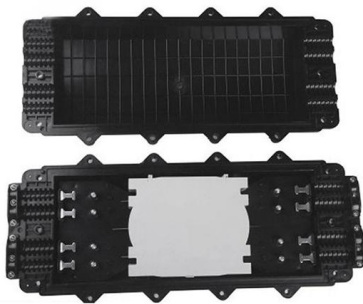
What is a Distribution Box? A distribution box, or DB box, is a circuit breaker enclosure. It is a vital part and central hub of any electrical system. The





What is a Distribution Box? - A Comprehensive Guide

Key Components of a Electrical Distribution Box
Circuit breakers are essential for protecting electrical systems by cutting off power during overloads or



Power Distribution Boxes: A Complete Overview , Eventech

Power distribution boxes, or PDUs, are essential for efficiently distributing electrical power to various equipment and devices in industrial and commercial settings.

Distribution Box: Types and Functions , Axis-Electricals

A distribution box ensures that electrical supply is distributed in the building, also known as a distribution board, panel board, breaker panel, or electric panel. It is



How Does a Power Distribution Box Work

Learn how a power distribution box works step by step--from incoming power to circuit protection and smart monitoring--for safe, efficient electricity delivery.



Understanding Distribution Boxes: A Comprehensive Guide

A distribution boxes is an essential device that manages the safe and efficient flow of electrical power throughout different areas of a building or facility.



Electrical Power Distribution Box Solutions

What Is an Electrical Power Distribution Box? An electrical power distribution box, also called a distribution board or breaker panel, serves as the hub where incoming power is split into multiple

Understanding Distribution Boxes: A Comprehensive Guide

A distribution box is used to receive electrical power from a main supply and distribute it to multiple branch circuits in a safe and controlled way. It helps protect circuits, organize electrical



Amazon : Power Distribution Box

Browse power distribution boxes with circuit breaker protection and multiple outlet configurations. Shop durable solutions for construction and emergency use.



Distribution Box Guide: Types, Components & Solutions

Distribution box 1-phase: Commonly used in residential applications, these are designed for lower power loads and typically feature fewer circuit



Power Distribution Boxes Explained Simply

A power distribution box plays a vital role in any electrical system. It receives electricity from the main supply and distributes it safely to various circuits

What is the Internal Structure of The Distribution Box

What is a Distribution Box? Definition A distribution box is an essential electrical component used to manage and control the flow of electricity



12 types of distribution boxes and how to choose them

To kick things off, a distribution box isn't some mysterious gadget. It's a protective enclosure that houses circuit breakers, fuses, or switches to manage electrical currents in a building. In simpler terms, it



The Complete Guide to Distribution Box: Installation, Types & More

Home distribution boxes typically handle single-phase power supplies and contain 6 to 24 circuits. They include standard circuit breakers for lighting, outlets, and major appliances like water

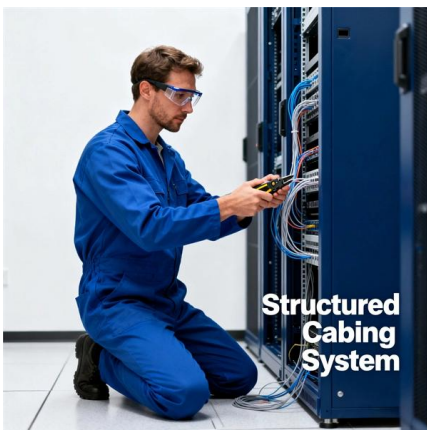


Ultimate Guide To Distribution Boxes Db Boxes Types

A Distribution Box, commonly known as a DB Box, serves as the central point for safely distributing electrical power from a main supply to multiple downstream

Understanding Distribution Boxes: Your Guide to Power

In the safe and effective supervision of electrical systems, distribution boxes may be the last quite unnoticed yet they are extremely fundamental part.



What is an Electrical Distribution Box? A

At its core, an electrical distribution box (or distribution board) is a metal or plastic enclosure that houses various components responsible for



Distribution Boards

Distribution boards, often referred to as electrical panels or breaker boxes, serve as the nerve center of any electrical system. Here we explore the crucial parts of a distribution board and gain insights into



Power Distribution Boxes Explained Simply

Learn what a power distribution box is, how it works, key components, types, and why it's vital for safe and efficient electrical systems.

Contact Us

For datasheets, pricing, or custom high-speed optical interconnect solutions, please visit:
<https://www.syropy.com.pl>