

Central Asian Five Countries ODF Patch Panel 24 Cores





Central Asian Five Countries ODF Patch Panel 24 Cores



24 Port ODF Rack Mount Fiber Optic Patch Panel

24 Port ODF Rack Mount Fiber Optic Patch Panel, Find Details and Price about ODF 24 Port from 24 Port ODF Rack Mount Fiber Optic Patch Panel

ODF Fiber Optic Patch Panel, ODF Unit Box

UnitekFiber, a professional manufacturer of fiber optic patch panel, can provide high quality rack mount fiber patch panel, wall mount fiber optic patch panel, sliding



Fixed Type Patch Panel 24 Ports Fiber Optic ODF-Bolein

Overview of Fixed Type Patch Panel A fixed type patch panel is a critical component in any fiber optic network infrastructure. It provides a central point to connect,

Odf Patch Panel 24 Core Rack Mount | Fiber Rack Mount Fiber Optic

Feature highlights: This 24-port fiber optic patch panel is designed for rack-mount applications, featuring a compact and lightweight structure with cold-rolled steel material and electrostatic power painting.



High Quality 24 Ports Optical Distribution Frame ODF

Indoor Fiber Patch Panel Wall Mount 24 Core Fiber Optic Patch Panel Optical Distribution Frame ODF HEAVY DUTY: Keystone Patch Panel is designed to



24 Core ODF ATT-ODF-24

24 cores ODF ATT-ODF-24 provides efficient cable connections between outside plant cables and equipment inside the buildings and communications facilities. Box integrates fiber splicing, storage



19 Inch Rack 24 Cores Patch Panel Fiber Optic Splice ODF

19 Inch Rack 24 Cores Patch Panel Fiber Optic Splice ODF, Find Details and Price about ODF 12cores 12c Optical Frame from 19 Inch Rack 24 Cores Patch Panel





12-24 Core Rack Mount Fiber Optical Distribution Frame

The swing ODF-A is used connecting optical fiber and Equipment of central office. 19" 1U 24 core standard. The front panel can be swing and the patch panel is

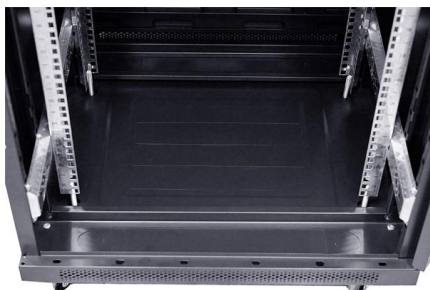


FTTH 1U Fiber Panel 24 Core 19 Inch Rack Patch Panel

Product Description 24 Core 19" 1U Rack Mount Cold Rolled Steel Fiber Distribution Frame ODF Unit ODF Optical Distribution Frame,It is modulized design with

Optical Distribution Frame , ODF , LongXing , LongXing

ODFS & PATCH PANELS LongXing optical fiber distribution frames are made of top quality steel and deformed aluminum alloy and treated with galvanizing, oxidation



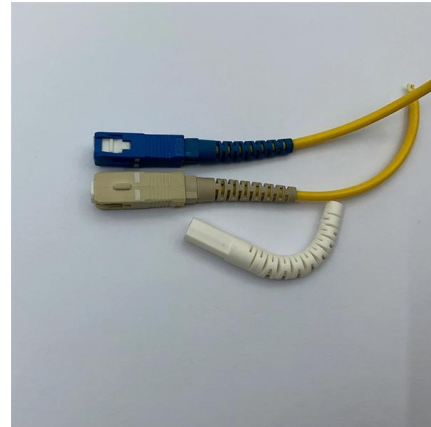
24 Core Rack Mounted , FIBEYE

It provides an efficient and organized way to manage your fiber optic network, ensuring reliable connectivity and communication. The 24 core capacity of this



Rack Mount Patch Panel , Patch Panel , Enclosure

LongXing rack mount patch panels provide a centralized point for termination, splice, storage and distribution of optical fibers, which are suitable for central offices



1U Sliding Type 48 Core ODF Fiber Optic Patch Panel

This 1U sliding type rack mount terminal box is a high quality fiber optic patch panel. With 48 core and 24 port design, it offers efficient optical signal transmission. The

FTTH 24 Core ODF/Patch Panel/Fiber Optic Terminal

Model NO.: Swing Type Rack Mount Fiber Patch Panel Type: Optical Fiber Distribution Box Wiring Devices: ODF Certification: ISO, RoHS Condition: New



ODF 19 Inch 12/24 Cores 1U Patch Panel

ODF 19inch 12/24 Cores 1U Patch Panel Slidable Rack-mount Fiber Optic Distribution Box. Aluminum fittings with self-locking. 19-inch rack mount for various adapters. Drawer for splicing, easy fiber



24LC Cores Fiber Patch Panel for Enhanced Connectivity

Introducing our Drawer Type Fiber Patch Panel ODF, the perfect solution for your fiber optic network. This Optical Distribution Frame (ODF) features 24LC Cores for efficient connectivity and

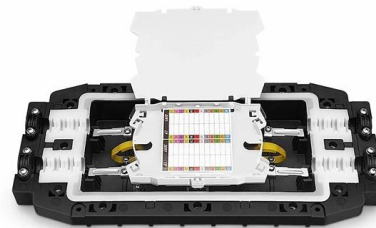


24 Core Fiber Optic Patch Panel APC

Description 1U 24 core optical fiber patch panel with 24pcs SC APC SX adapters Rack mount patch panel is mainly used for connection and storage between

FTTH 19 Inch Slidable Fiber Optic Patch Panel 24 Cores

Product Description FTTH 19 Inch Slidable Fiber Optic Patch Panel 24 Cores Fibre Termination Box ODF ODF-RS24 is a 19" rack mounted fiber optic patch panel



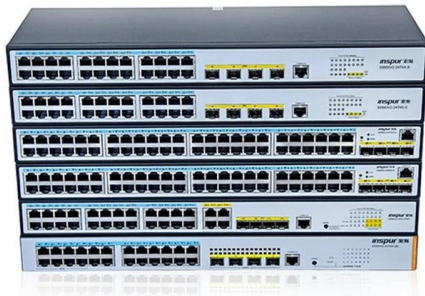
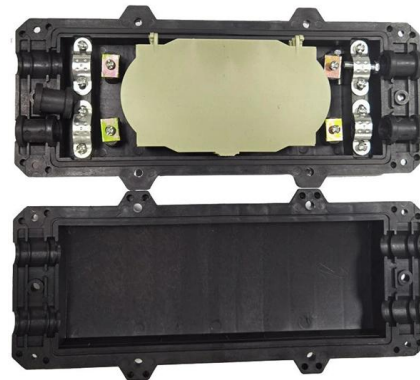
1u Rack Mount Splicing ODF Patch Panel 24cores Fiber

Company's new project mainly serves the Optical Transport Network (OTN) construction of major domestic and international communication operators, and



24 Ports ODF OM3 Multimode Fiber Optic Patch Panel

There different models to fit for 12 core fiber, 24 core fiber, 36 core fiber, 48 core fiber, 72 core fiber,96 core fiber,144 core fiber applications. They can be with



High-Density Fiber Optic Patch Panel for 12-24 Cores

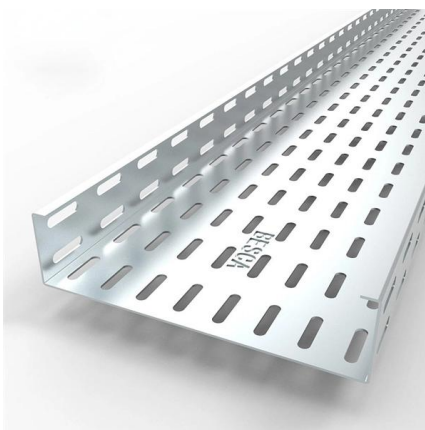
The product is split design, the front adapter panel is made of

Fiber Optic Patch Panel , ODF Optical Distribution

The Fiber Optic Patch Panel, often referred to technically as an ODF (Optical Distribution Frame) or Fiber Termination Panel, is the central nerve system of any



2. Imported design is convenient for expansion.
The design of two inlets saves space and allows for rear line entry.



Optical ODF 24-Port ODF Fiber Optic Distribution Box

Model NO.: QF-ODFRS24 Type: Fiber Patch Panel
Wiring Devices: ODF Certification: ISO, RoHS
Condition: New Application: Slidable Rack



ODF-RF24 Fiber patch panel ODF

ODF-RF24 Fiber patch panel ODF Details Fixed rack-mount fiber optic distribution frame holds up to 2 fusion splice trays and provides an economical way of



50km/spool



Fiber Patch Panel Unit 24 Core OM4 Fiber Optical

Gcabling is a leading fiber optic patch panel manufacturer & supplier. We can manufacture and supply a wide range of ODF with 20+ years of experience.

ODF 24 48 Port SC Optical Distribution Frame Unit

Description ODF optical distribution frame unit is used for the termination and distribution of backbone optical cable in the fiber communication system. With



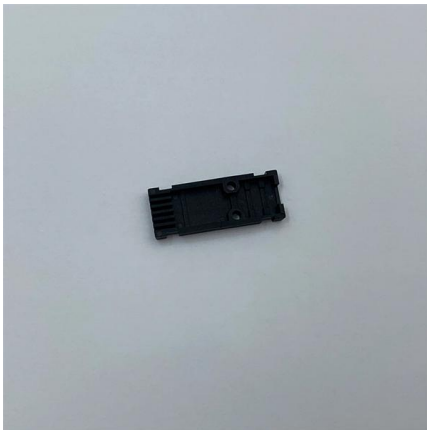
Fiber Patch Panel vs ODF : What's the Differences

Fiber patch panel is primarily used for connecting and managing fiber optic lines and is commonly used in local networks and data centers. ODF goes



24 Ports OM4 ODF Multimode Fiber Optic Patch Panel 1U 19" Rack

It provides a central location for managing and organizing fiber optic cables, making it easier to connect and maintain them. It typically contain several ports or slots into which fiber optic cables can be



ODF LC 24 port 1U Patch Panel

High-quality cold-rolled steel with electrostatic spray-treated surface for an elegant look. High density: 1U up to LC 96 cores/SC 24 cores. Drawer-type structure for

Contact Us

For datasheets, pricing, or custom high-speed optical interconnect solutions, please visit:
<https://www.syropy.com.pl>