

# **Center elevation of the distribution box**





## Overview

---

The proper installation of a distribution box involves placing it at the right height to ensure safety and convenience. The fixing method should be firm and reliable to avoid movement or tilting of the box due to vibration or collision. Distribution boxes shall be made of non-combustible materials; open distribution boards may be installed in production places and offices with low electric shock risk; enclosed cabinets shall be installed in processing workshops, foundries, forging, heat treatment, boiler rooms, woodworking houses.



## Center elevation of the distribution box

---



### Key Points Of Installation And Collocation Of Distribution Box In

The inlets and outlets of the mobile distribution box and switch box shall not be connected with pins Rubber insulated cable must be used for the mouth line and exit line. 8. The distribution box and

### Distribution Box and Selection Guide

Distribution Box Selection Guide This guide provides information on how to select the appropriate Distribution Box for Electric project. If you have any



### Installation points of household distribution box

The distribution box of household distribution box should not be installed too high. Generally, the installation elevation is 1.8m to facilitate operation; the electric pipe



### How to determine the size, installation method and

9) The wood brick and iron parts needed for the installation of the distribution board need to be buried in advance, and the exposed distribution box should be fixed



### **Understanding Distribution Boxes:A Comprehensive Guide**

A distribution boxes is an essential device that manages the safe and efficient flow of electrical power throughout different areas of a building or facility.



### **How to Improve the Installation Quality of Distribution Boxes**

Learn key methods to enhance distribution box installation quality, including location, height, wiring, and safety compliance.



### **How to Choose a House Distribution Box , CHINT global**

A well-chosen distribution box ensures the safety and efficiency of your household electrical system. This article guides you through selecting a





## Distribution Box: Types and Functions , Axis-Electricals

A distribution box ensures that electrical supply is distributed in the building, also known as a distribution board, panel board, breaker panel, or electric panel.



## Requirements And Specifications For Installation Of

The bottom edge of the distribution box is usually between 1.5 meters and 1.8 meters above the ground, which is convenient for operation and



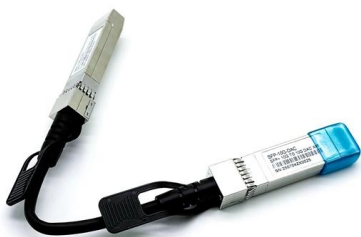
## Understanding Distribution Boxes: A Comprehensive Guide

A distribution box, also known as a power distribution box or electrical distribution box, is used to distribute electrical power safely to multiple



## How to Install a Distribution Box--A Comprehensive

The best height for installing residential distribution boxes is 1.5 meters above the ground, while for industrial distribution boxes, the height





## A comprehensive understanding of distribution box

? Introduction Distribution boxes are at the heart of safe and organized electrical systems--whether in residential, commercial, or industrial settings. But



## A Definitive Guide To Distribution Boxes

The distribution box acts as the center of power distribution, distributing electricity to all connected devices. A distribution box, also known as a distribution board, panel board, breaker

## How to Install a Cable Distribution Box Safely and

In modern electrical systems, cable distribution boxes (also known as electrical distribution boxes or distribution boxes) play a crucial role as the key



## Power Distribution Boxes Explained Simply

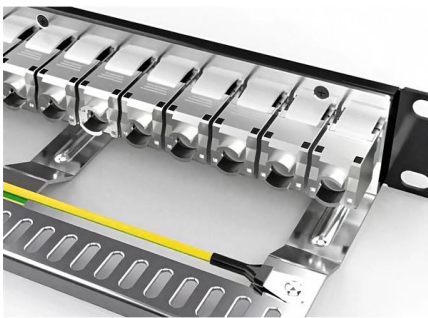
Discover the essentials of a Power Distribution Box--how it works, key types, benefits, and tips to ensure safe, efficient electrical power management.





## Power Distribution Boxes Explained Simply

Learn what a power distribution box is, how it works, key components, types, and why it's vital for safe and efficient electrical systems.

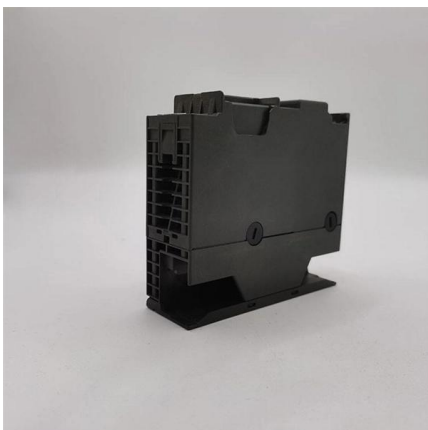


## Cable Distribution Box Layout: 10 Industrial Strategies

This article will detail the practical strategies for optimizing the layout of cable distribution boxes in industrial scenarios, integrating the advantages of Chuanli products and industry best

## Distribution Boxes: Types and Functions

A distribution boxes acts as the load center and main distributor of electrical power within a building. Also called a distribution board, panel board,



## How to Choose a House Distribution Box , CHINT global

This article guides you through selecting a distribution box that is both affordable and safe, emphasizing key features, configuration, and practical



## Understanding Distribution Boxes: Your Guide to Power

Weatherproof Distribution Boxes These serve specific outdoor purposes, with rain, dust, and extreme temperatures sealed shut, protecting any



### What is the Ideal Installation Height for a Distribution Box

Install a distribution box at 4.5 to 5.5 feet high for safety, accessibility, and compliance. This height ensures easy use and protection from hazards.

### Installation requirements for distribution boxes

The bottom of the board (box) installed on the ground should be 5-10 mm higher than the ground; the center height of the operating handle is generally 1.2-1.5 m; there are no obstacles in the



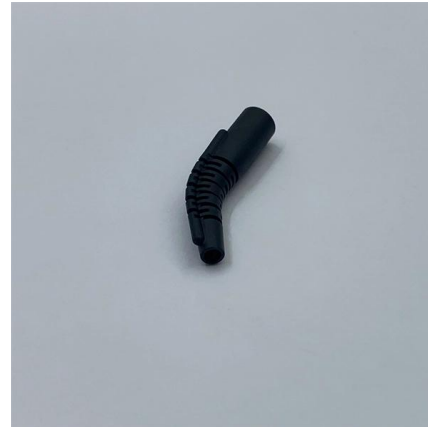
### What is the Function of a Distribution Box in Electrical Systems

Understand the function of the distribution box in electrical systems and how it ensures safe and efficient power distribution.



### **The installation requirements for the distribution box**

The distribution box shall be installed horizontally and vertically. After the box is placed, the perpendicularity of the box shall be found with ruler board to meet the requirements.



### **The Complete Guide to Distribution Box: Installation, Types & More**

Modern distribution boxes also serve as monitoring centers, allowing users to quickly identify which circuits are experiencing problems. This centralized approach makes electrical

## **Contact Us**

---

For datasheets, pricing, or custom high-speed optical interconnect solutions, please visit:  
<https://www.syropy.com.pl>