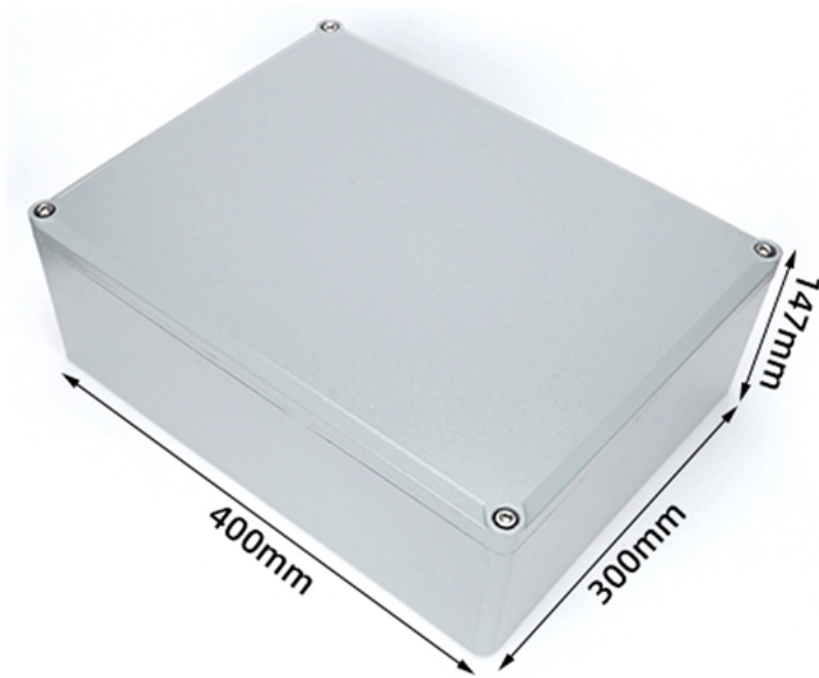


Case Study of Hot Aisle Construction in Data Centers in Guatemala





Overview

The rapid growth in data centres – large computing infrastructures containing vast quantities of data processing and storage equipment – has resulted in their consumption of up to 100 times more energy per.



Case Study of Hot Aisle Construction in Data Centers in Guatemala



Hot Aisle Containment (HAC) for Data Centers Explained

Looking for a way to reduce energy expenses for your data center? According to Energy Star, data centers with hot/cold aisle arrangements can

Typical Data Center HVAC Hot Aisle / Cold Aisle Layout

Download scientific diagram , Typical Data Center HVAC Hot Aisle / Cold Aisle Layout from publication: Report to Congress on Server and Data Center Energy Efficiency: Public Law 109-431 , This



GAIN AN IN - DEPTH UNDERSTANDING OF



- ① LED DISPLAY PANEL
- ② PROTECTOR OPERATION BUTTONS
- ③ NEUTRAL WIRE OUTPUT TERMINAL
- ④ LIVE WIRE OUTPUT TERMINAL
- ⑤ WORKING CURRENT AND VOLTAGE INSTRUCTIONS
- ⑥ FLAME - RETARDANT SHELL

Data Center Design: Hot Aisle & Cold Aisle - Length

Efficient airflow management in data centers relies heavily on proper Hot Aisle and Cold Aisle configurations. To maintain thermal performance, equipment

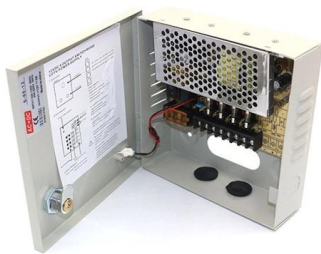
A Comparative CFD Study of Two Air Distribution Systems with Hot Aisle

Removing heat from high-density information technology (IT) equipment is essential for data centers. Maintaining the proper operating environment for IT equipment can be expensive. Rising energy cost



Hot Aisle Containment in Data Centers , Subzero

The projects below represent custom hot aisle containment configurations engineered for specific facility constraints, equipment layouts, and cooling



Hot aisle/Cold Aisle Containment in Data Centers For Most Energy

With so many variables affecting airflow within a data center, it can be daunting to know where to start and how to get the most of airflow management improvements



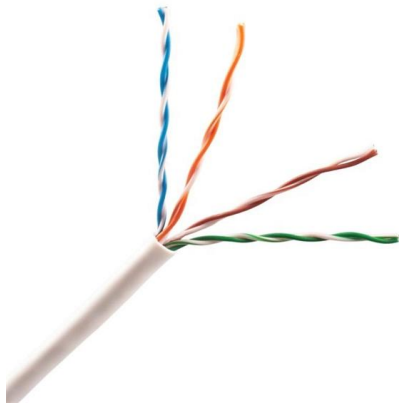
Understanding types of containment , Legrand Data Center Solutions

Understanding types of containment Data center terminology can sometimes be challenging to understand, especially when discussing types of containment solutions. This page will outline the two



Hot Aisle Containment: The Coolest Guide for 2025

Hot aisle containment data centers are engineered to optimize cooling efficiency and minimize energy use by effectively separating hot and cold air. By



Energy Efficient Data Centers: What to Know , Flexential

Energy-efficient data centers are built to do more with less, delivering top performance while minimizing energy use and environmental impact. The

Energy Savings Through Hot and Cold Aisle Containment Configurations

To show the potential for energy efficiency improvements a case study in deploying a cold aisle containment solution for a 8944 ft2 data center will be presented.



Analysis of Various Hot Aisle Containment Panels and

The use of hot and cold aisle containment systems is a common tactic to ensure that the inefficient mixing of air does not occur in data centers. The

A DEEP DIVE INTO THE WORLD OF HOT &



COLD AISLE

THE GREEN GRID: ASHRAE Data Center Cooling Guidelines: Developed in collaboration with ASHRAE, this document provides best practices for data center cooling, including hot and cold aisle

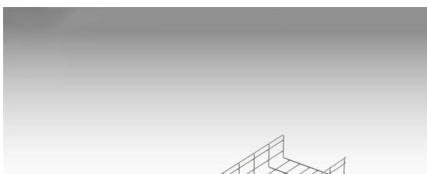


Optimizing Thermal Performance in Data Centers: A

Through a combination of theoretical insights and practical examples, this study provides engineers, designers, and stakeholders a comprehensive

Case Study: Modular Hot-Aisle Containment System Shipped Ready

This project demonstrates how modular extruded containment systems allow data center contractors to deploy advanced cooling solutions rapidly while minimizing on-site disruption.



Grid Cable for marine and offshore applications

Analyzing the Cooling Behavior of Hot and Cold Aisle Containment in

Different types of air distribution schemes have different impacts on the energy efficiency of cooling systems. The analysis results of this paper demonstrate that sealing an appropriate aisle (hot aisle or



Hot And Cold Aisle Data Center Containment

Containment is needed in data centers and is a best practice followed by most modern data centers. For more inputs on containment and designing and



Energy Savings Through Hot and Cold Aisle Containment Configurations

To show the potential for energy efficiency improvements a case study in deploying a cold aisle containment solution for a 8944 ft 2 data center will be presented. This study will show that

Containment Strategies in High Density Data Centers

Last week we continued our article series on the challenges of keeping IT equipment cool in high density environments. This week, we outline some



Hot and Cold Aisle Rack Optimization/Data Center

Read our case study on how we optimize airflow and control temperature in data centers' hot and cold aisle cabinets to maintain proper IT operating conditions.



Cold & Hot Aisle Containment For Data Center Efficiency

Case Study 2: Retrofit of Legacy Facility
Challenge: Legacy data center with inconsistent airflow, overheating racks. Solution: Installed hot aisle



Length:33.5mm
Small-end inner diameter:4.0mm
Large-end inner diameter:6.0mm



Modeling and Control for Cooling Management of Data Centers With Hot

To minimize recirculation and hence increase cooling efficiency, hot aisle containment has been employed in an increasing number of data centers.

What To Know About Hot-Aisle, Cold-Aisle, And Chimney Data Center

Containment systems are used in modern data centers to isolate the hot discharge air from the cooler supply air, managing cooling by separating the airflow. This separation of hot and



02

High Quality Material

High hardness to resist external impact, Good Shaping Performance Good Look and Anti-rust



Hot Aisle Containment: Complete Guide to Data Center Cooling Efficiency

Learn hot aisle containment basics, benefits, and implementation. Reduce cooling costs 43% and improve data center efficiency with our complete guide.



Cold & Hot Aisle Containment For Data Center Efficiency

Learn how cold and hot aisle containment improves airflow, reduces energy use, and boosts reliability in data centers. Backed by CFD insights from



Hot Aisle & Cold Aisle Containment Solutions & Case

The document discusses hot aisle and cold aisle containment strategies for data centers, highlighting their importance in improving airflow management and

Ground Supported (GS) Hot and Cold Aisle Containment

This case study details the application of an Ardmac ground supported, structural HAC (Hot Aisle Containment) assembly for a data centre project based in Austria.



89P 36P 16P

Hot Aisle vs Cold Aisle in Data Centers: Technical

What Are Hot Aisle / Cold Aisle Configurations? Data centers are ovens if left unmanaged. Hundreds, sometimes thousands of servers pump out



Numerical analysis of the individual and combined effects of the aisle

This study underscores the necessity of high-fidelity CFD modeling for accurate airflow diagnosis and offers practical design guidelines for developing reliable and thermally efficient edge



Contact Us

For datasheets, pricing, or custom high-speed optical interconnect solutions, please visit:
<https://www.syropy.com.pl>