

Can a router s SFP port be connected to a fiber optic cable





Overview

Insert the SFP modules into the SFP or SFP+ port of your UniFi device. The SFP+ port is a high-speed optical-to-optical signal conversion port, mainly used for 10G Ethernet and Fiber Channel network applications. A key advantage of SFP+ Modules is that they are "hot-swappable", meaning they can be swapped out while the router is still powered on. This guide breaks down exactly how to use SFP ports on UniFi switches and gateways for fiber connections, what modules you'll need, and a few real-world tips that'll save you time and money. I'm thinking it should be possible to plug in my ISP's fiber optic cable (which looks like the below) directly in the router using an SFP module.



Can a router s SFP port be connected to a fiber optic cable

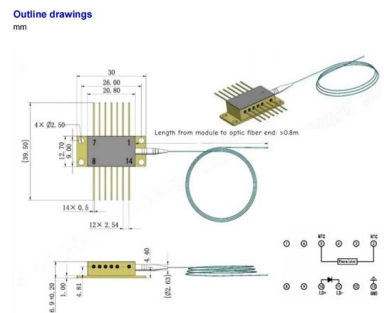
Understanding SFP Port: A Guide to Gigabit Ethernet



A: An RJ45 port is a standard Ethernet port that uses copper cables, while an SFP port is a modular interface that allows for different types of lines,

Small Form-factor Pluggable

Because of their low cost, low profile, and ability to provide a connection to different types of optical fiber, SFP provides such equipment with enhanced flexibility.



Deco SFP+ Ports User Reference Guide

We haven't tested SFP+ DAC cables yet and the performance can't be guaranteed. It's recommended to use the Fiber SFP+ modules or AOC cables

How to Connect Fiber Optic Cable to Router: Top 5

Learn how to connect fiber optic cable to router with our step-by-step guide. Optimize your home network for speed and reliability!



How To Connect Fiber Optic Cable To Router?

Connecting a fiber optic cable to a router involves a few key steps and specialized equipment. Here's a simple guide to help you through the process: 1.

What Is an SFP Module? (Comprehensive Guide Including Fiber Optic)

Compared with the larger Gigabit Interface Converter (GBIC), the SFP format reduces space occupation by approximately 60%. This groundbreaking improvement has significantly increased the port density



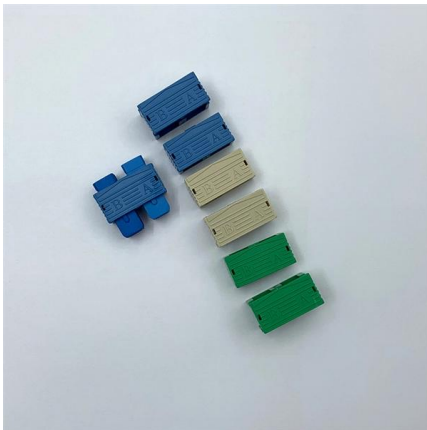
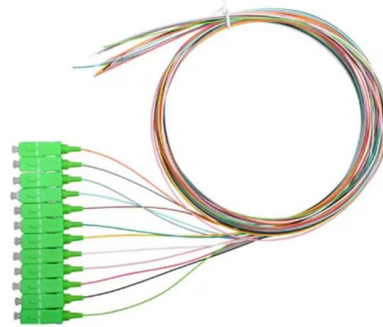
4 Port Gigabit Industrial PoE Switch, 2 SFP Uplinks , AvaEye

The ports automatically recognize compatible PoE devices and can provide up to 30W per port, depending on the total connected load. The 2 SFP slots support 100/1000Base-X fiber uplinks, giving



Understanding SFP Port: A Guide to Gigabit Ethernet

A: An SFP port is an interface used in networking devices, such as switches and routers, to connect to other devices using fiber optic or copper



How do you connect SFP to fiber optic cable?

Once the connection is confirmed, secure the fiber optic cable to prevent accidental disconnection. Always handle fiber optic cables and SFP

How to Connect Fiber Optic Cables to SFP Modules , Weunion Guide

In high-speed data networks, the seamless integration of fiber optic cables with SFP (Small Form-Factor Pluggable) modules is critical for reliable signal transmission.



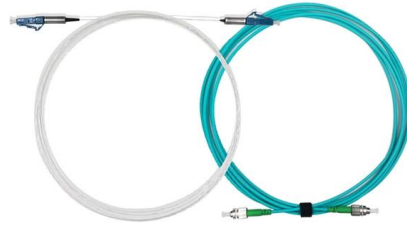
How to plug in ISP Fiber Optic cable in Router? : r/HomeNetworking

I currently ordered an Ubiquiti Dream Machine Pro router - and I noticed it has SFP+ module slots. I'm thinking it should be possible to plug in my ISP's fiber optic cable (which looks like the below) directly



HMS Networks

HMS creates products that enable industrial equipment to communicate and share information with software and systems. In short: Hardware Meets Software(TM).



How to use Ubiquiti SFP ports for fiber optic connections

This guide breaks down exactly how to use SFP ports on UniFi switches and gateways for fiber connections, what modules you'll need, and a few real-world tips that'll save you time and money.



Fibre Channel

Fibre Channel typically runs on optical fiber cables within and between data centers, but can also run on copper cabling. Supported data rates include 1, 2, 4, 8,



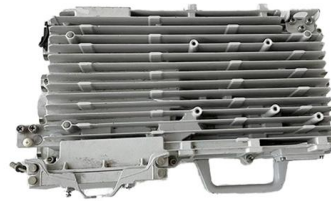
10 Gigabit Ethernet

10 Gigabit Ethernet Router with two dozen 10 Gigabit Ethernet ports and three types of physical-layer module 10 Gigabit Ethernet (10GE, 10GbE, or 10 GigE) is a



How to plug in ISP Fiber Optic cable in Router? : r/HomeNetworking

Hi everyone, I currently ordered an Ubiquiti Dream Machine Pro router - and I noticed it has SFP+ module slots. I'm thinking it should be possible to plug in my ISP's fiber optic cable (which looks like



SFP-10G-LR-1310nm 20km LC DDM Optical Transceiver

An SFP interface on networking hardware is a modular slot for a media-specific transceiver in order to connect a fiber-optic cable or sometimes a copper

The Ultimate Guide to SFP Modules (2026): Types,

SFP (Small Form-factor Pluggable) is a compact, hot-pluggable network interface module used to connect network devices (switches, routers, firewalls) to fiber



Unlocking the Potential of Routers with SFP Ports: A

Routers with Small Form-factor Pluggable (SFP) ports provide networking environments with unprecedented flexibility and scalability. These



What Is an SFP Module? -- Complete Guide to SFP, SFP+ & SFP28

An SFP (Small Form-factor Pluggable) is a compact, hot-pluggable transceiver module that allows networking equipment -- including switches, routers, servers, and media converters -- to support



What Is Fiber Optics? Definition from SearchNetworking

What is fiber optics? Fiber optics, or optical fiber, refers to the technology that transmits information as light pulses along a glass or plastic fiber.

Common Applications of SFP+ Interface

If your router is connected directly to a Fiber modem from your ISP, a high-speed SFP+ ONU stick may replace your fiber modem and connect your



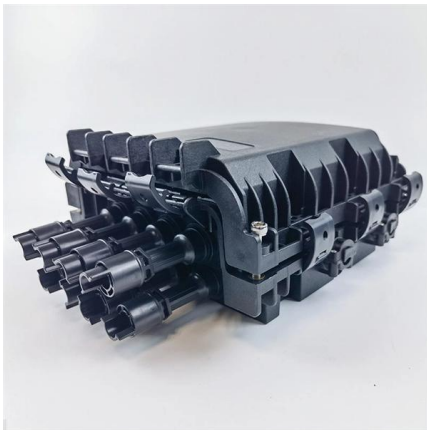
Differences Between ST, SC, FC, and LC Fiber

Learn the differences between ST, SC, FC, and LC fiber connectors. Explore connector types, PC/UPC/APC polish, single-mode vs multi-mode



How to Connect Fiber Optic Cable to Router: A Step-by

A: Only if your router has an SFP port designed for fiber. Most home routers require an ONT as an intermediary. Q: Do I need a special router for fiber

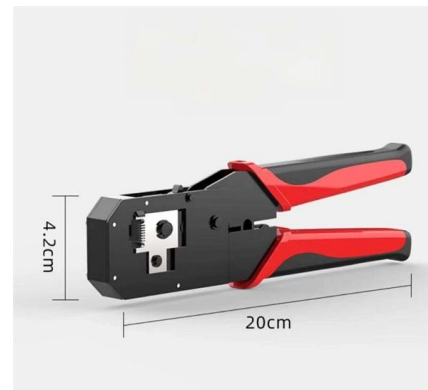


Mikrotik PowerBox Pro RB960PGS-PB Five Gigabit Ethernet

Ethernet ports 2-5 can power other PoE capable devices with the same voltage as applied to the unit. Less power adapters and cables to worry about! It can power 802.3at and af mode B compatible

Cisco 10GBASE SFP+ Modules Data Sheet

Cisco SFP-10G-T-X module The Cisco 10GBASE-T module (Figure 2) offers connectivity options at the following data rates: 100M/1G/10Gbps. It has the



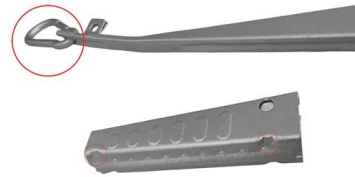
Troubleshooting Tip: SFP/SFP+ transceivers port/fiber link is not

In that case, create a TAC ticket and post the details. Check that the optic cable is in good shape. Use an optical power meter: it can verify the transmit power of an SFP and fiber. It can

What is SFP Port? everything you need to know



SFP ports are crucial to high-speed data transmissions and communications, particularly in expansive network environments. It's crucial to



Contact Us

For datasheets, pricing, or custom high-speed optical interconnect solutions, please visit:
<https://www.syropy.com.pl>