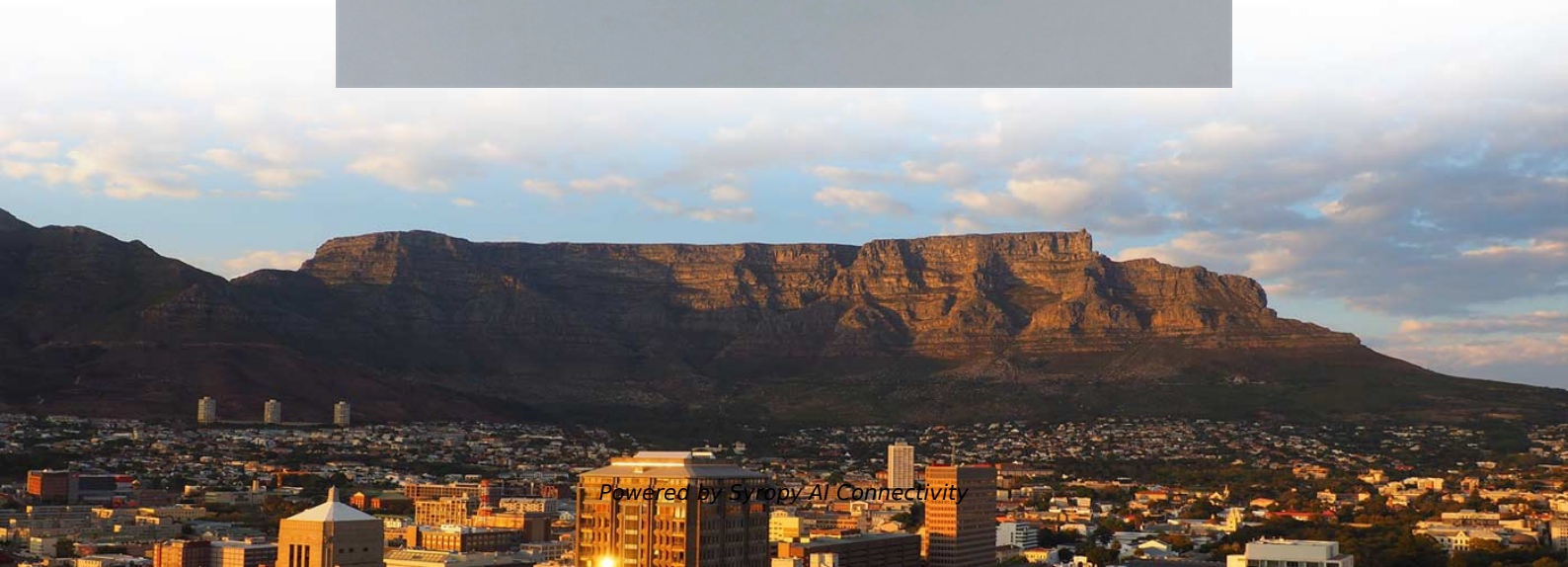
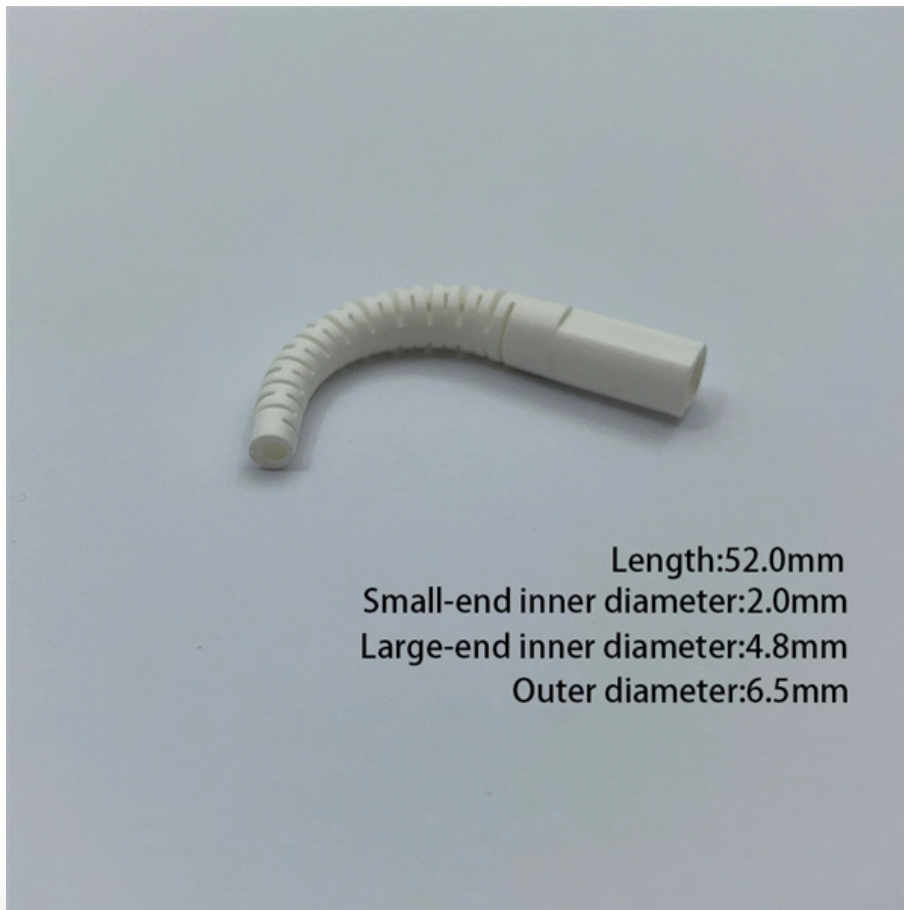


Can a fiber optic transceiver be plugged into a cold-joint connector





Can a fiber optic transceiver be plugged into a cold-joint connector



Common Fiber Connector Types in Optical Transceivers

This guide explores the most common fiber connector types used in optical transceivers--LC, SC, FC, ST, and MPO/MTP--and highlights how LINK

zxcvbn-rs/src/frequency_lists.rs at master

Port of Dropbox's zxcvbn password strength library for Rust - shsoichiro/zxcvbn-rs



4 Methods of Fiber Connection You Need to Know

It allows connections to be plugged into connectors and fiber sockets. While connectors can lose 10% to 20% of light, they make system reconfiguration

Step-by-Step Guide for Installing and Removing SFP

SFP (Small Form-factor Pluggable) transceiver modules are widely used for connecting network devices such as switches, routers, and servers.



Common Fiber Connector Types in Optical Transceivers

Explore common fiber connector types like SC, LC, ST, FC, and MPO/MTP, their characteristics, and applications in optical transceivers for



How does cold weather affect fiber optic connectors and cables?

Another solution can be to add antifreeze liquids or gels to the fibre conduit, but again this can have a high cost. Rugged connectors To cost-effectively protect an optical fibre against extreme



Cisco Optical Transceiver Handling Guide

This guide describes the general handling measures and precautions when handling optical transceivers to ensure they can be handled with reduced risk for damage.





Fiber Optics Demystified: How To Choose a

When upgrading fiber optic hardware, whether transceivers, direct attach cables or active optical cables, patch cables, media converters, or



What Freezing Weather Can Do To Your Fiber Optic

However, fiber optic cable's weakness may be that when exposed to freezing-cold temperatures, fiber optic cables may stop working. Fortunately,

A guide for fiber optic transceivers, connector types and

It is essential to know fiber optic cable, transceiver and connector types while designing network systems. Fiber optic cable have strict advantage over copper cable hence it has low



cold weather affect fiber optic cables and connectors

A suitable connector, which is specifically designed for harsh environments, can ensure the fiber conduit is sealed, and the fiber itself is safe from the risk of ice formation.



Unlocking the Secrets of Fiber SFP Connectors: A

Discover the ins and outs of fiber SFP connectors with this comprehensive guide. Explore everything from different wavelengths to gigabit



How Winter Weather Impacts Fiber Optic Cables , Network Drops

Cold weather can cause issues with fiber optic cables and affect your connection. Learn what problems can happen and simple ways to prevent or fix them.

Fiber Fast Connector Buying Guide: SC/APC Cold Connector Types

A fiber fast connector, also known as a mechanical splice or cold connector, is a field-installable connector that terminates fiber optic cables without requiring a fusion splicer.



Fiber Optic Converters: A Beginner's Guide

Fiber optics are an efficient, reliable, low-energy way to transmit copper-based signals over long distances while providing immunity to electrically noisy



Active Cooling of Optical Transceivers , Tark Thermal

Discover how active cooling solutions for optical transceivers enhance performance in 5G telecommunications, ensuring reliable data transmission in outdoor



How do you plug in fiber SFP?

5. Connect the fiber optic cable to the SFP module by aligning the connector and gently pushing it in until it clicks into place. 6. If your device has hot-swappable capabilities, the SFP

How To Use A Fiber Optic Media Converter In Your

Optimize your network like a pro! Learn from the experts on how to properly implement a fiber optic media converter into your network for optimal



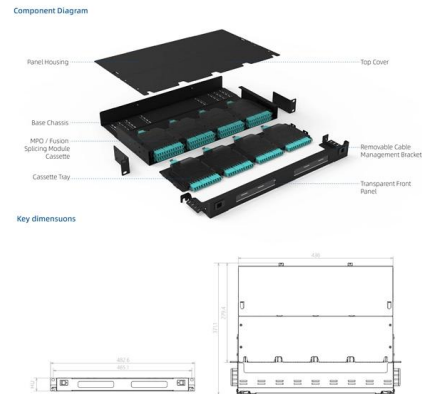
Step-by-Step Guide for Installing and Removing SFP

In this step-by-step guide, we will walk you through the process of installing and removing SFP transceiver modules to ensure proper handling and



SFF-8679 Specification for QSFP+ 4X Hardware and Electrical

SFF-8635 QSFP+ 4X 10 Gb/s Pluggable Transceiver Solution (QSFP10) SFF-8685 QSFP+ 4X 14 Gb/s Pluggable Transceiver Solution (QSFP14) SFF-8665 QSFP+ Pluggable Transceiver Solution



Fiber optic quick connector cold joint

When inserting the optical fiber into the optical fiber quick connector/cold splice, it should be inserted slowly to prevent damage to the optical fiber, resulting in poor transmission performance of the

How to install and remove SFP/SFP+ transceiver?

Caution: Make sure the transceiver is properly aligned before sliding it into the port. Failure to align may cause the pins to bend, rendering the



Can You Use Fiber Optic Cable with RJ45? , Fiber vs

RJ45 and fiber optic cables transmit data differently--electrical vs optical. Learn why they are not directly compatible, how to connect Ethernet to fiber.



The principle of optical fiber cold splice technology

Optical fiber cold splice technology is based on the use of mechanical connectors to join two fiber-optic cables. These connectors are designed to align and join the fibers together in a

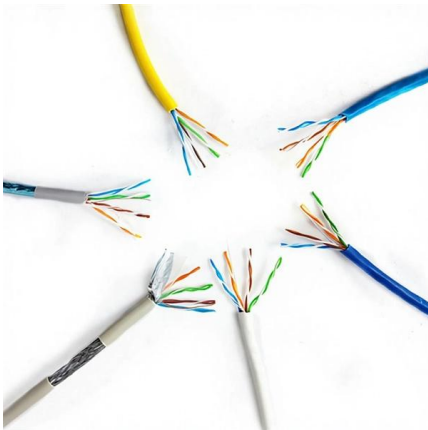


Transforming Data into Light: The Ultimate Guide to

A fiber optic transceiver is one of the most essential parts of any modern telecommunications or data communications system. It plays a vital role

How does cold weather affect fiber optic connectors and

A suitable connector, which is specifically designed for harsh environments, can ensure the fiber conduit is sealed, and the fiber itself is safe from the risk of ice



fiber optic cold connection

Fiber optic cold connection, also known as mechanical splicing, is a widely used method of connecting optical fibers in a network. Unlike fusion splicing, which uses heat to join two optical fibers



How to Plug and Unplug Fiber Optic Connectors

Are you interested in seeing how fiber optic connectors get mechanically plugged into an adapter? This video goes over common types of connectors, their resp

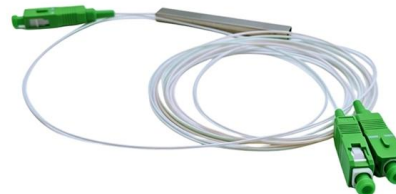


SFP Transceiver: Types, Installation & Troubleshooting

Learn about SFP Transceiver types, installation, troubleshooting, and future advancements in high-speed networking and optical communication.

Fiber Optic Transceivers Compatibility And

Fiber optic transceivers are indispensable devices in modern communication networks, used to convert electrical signals into optical signals



Optical transceivers - turning data into light

Optical transceivers are an important part of a fiber optics network and is used to convert electrical signals to optical (light) signals and optical signals to electrical



Contact Us

For datasheets, pricing, or custom high-speed optical interconnect solutions,
please visit:

<https://www.syropy.com.pl>