

Can a beam splitter be used at the connector assembly

Component Diagram



Key dimensions





Overview

For beam splitters with two incoming beams, using a classical, lossless beam splitter with E_a and E_b each incident at one of the inputs, the two output fields E_c and E_d are linearly related to the inputs through where the 2×2 element is the beam-splitter transfer matrix and r and t are the and along a particular path through the beam splitter, that path being indicated by the subsc.



Can a beam splitter be used at the connector assembly



Design and development of an optical beam splitter assembly and

This type of beam splitter assembly coupled with a diode laser through fibers can be remotely used for alignment or position monitoring of different medium to large size structures with a

What are Beamsplitters?

Beamsplitters are optical components used to split incident light at a designated ratio into two separate beams. Additionally, beamsplitters can be used in reverse to combine two different beams into a

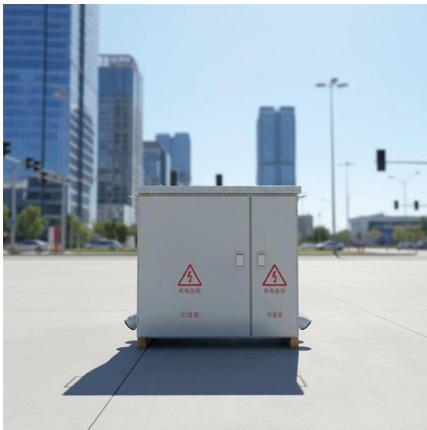


Beamsplitters, Beam-combiners and Dichroic Filters

At Vortex we can design and manufacture any custom beamsplitters, beam-combiners, and dichroic filters between 300 nm to 6000 nm. Click on the relevant

Prisms & Beamsplitters: Reflecting, Polarizing

For optimum results, the incident light beam should enter the beamsplitter through the prism that has been coated with reflecting film so that reflection occurs before



Beam Splitters

There are a variety of beam splitters for these applications, with different advantages and disadvantages. Dielectrically coated beam splitters have a high laser damage

How to Select a Beamsplitter

What is a Beamsplitter? A beamsplitter is an optical device that divides an incident beam of light into two parts: one part is transmitted through the splitter, while the



What is a Beam Splitter: Types And Applications

A beam splitter is a device used to separate or combine light. It is widely used in guiding light in optical systems, enhancing imaging and



Fiber-Based Polarization Beam Combiners/Splitters, 1

Thorlabs' Single Mode Fiber-Based Polarization Beam Combiners (PBC) or Splitters are designed to either combine two orthogonal polarizations into a single fiber or



How Beamsplitters Work: Principles and Applications

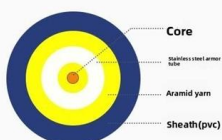
Learn how beamsplitters divide light using partial reflection and transmission, and explore their essential roles in modern optical systems.

Your Go-to Guide to Optical Splitter

The optical splitter is an optical power distribution device that splits one optical signal into multiple optical fiber signals to achieve multichannel transmission.



Armored optical cable



Understanding Beamsplitters: A Comprehensive Guide

Beamsplitters are optical components used to split an incoming light beam into two independent beams. Depending on the application, they can also combine two



How Does a Beamsplitter Work? , Cube vs. Plate Comparisons

These beamsplitters eliminate ghosting because the transmitted beam is coherent with the incident light beam. A cube beam splitter has a significant advantage over a plate beamsplitter because ghost

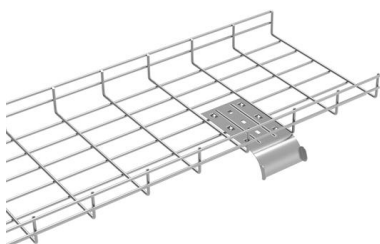
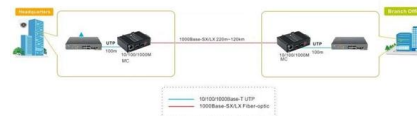


What are Beamsplitters?

Beamsplitters are optical components used to split incident light at a designated ratio into two separate beams. Additionally, beamsplitters can be used in reverse to

Beam Splitters - optical power splitter, beamsplitter, thin

Beam splitter cubes can be used not only for simple light beams, but also for beams carrying images, e.g. in various types of cameras and projectors. Generally, cube



Beamsplitters Selection Guide For Optical Applications

In form factor these are very similar to plate beamsplitters. Applications of Beam Splitters One of the biggest application areas is interferometry. This is



What is a Beam Splitter?

Non-polarizing beam splitter cubes can be made by refining the design, normally via a multilayer coating between the prisms. The substantial angle of incidence will naturally introduce a



How does a beam splitter work? Common types and use cases

Understanding Beam Splitters Beam splitters are essential optical components used to divide a beam of light into two or more separate beams. They play a crucial role in various scientific,

Beamsplitters: Divide, combine & conquer

When you need to separate or overlap two beams on the optical bench or in a product design, the solution is most often the humble but elegant beamsplitter. In



Do You Know How to Place and Use the Optical Splitter?

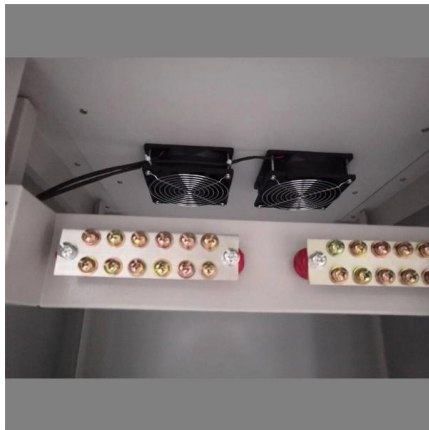
In the realm of optical communication networks, the optical splitter serves a vital role in dividing and distributing optical signals efficiently. Understanding how to properly place and use an





Beamsplitter

Sénarmont polarizing beam splitters are similar, but the polarizations of the deviated and undeviated beams are interchanged. Wollaston polarizers (Fig. 7b) deviate both output eigenpolarizations with



Beam Splitter , Precision, Applications & Design Principles

The ratio of split light can vary, offering flexibility in applications requiring different light intensities. Material selection is another crucial aspect of

Beam Splitter

A beam splitter is defined as an optical device that effects a linear transformation of fields presented at two input ports, producing output beams that are related to the input fields in a characteristic manner



Beam Splitters - optical power splitter, beamsplitter, thin

A beam splitter is an optical component used for splitting light into two separate beams, usually by wavelength or polarity. It can also be used, in reverse, as a



Beam splitter

A third version of the beam splitter is a dichroic mirrored prism assembly which uses dichroic optical coatings to divide an incoming light beam into a number of



Beam splitter

Overview Classical lossless beam splitter Designs Phase shift Use in experiments Quantum mechanical description Reflection beam splitters

For beam splitters with two incoming beams, using a classical, lossless beam splitter with electric fields E_a and E_b each incident at one of the inputs, the two output fields E_c and E_d are linearly related to the inputs through where the 2×2 element is the beam-splitter transfer matrix and r and t are the reflectance and transmittance along a particular path through the beam splitter, that path being indicated by the subsc

Optical Splitters Demystified: The Silent Heroes

? What is an Optical Splitter? An Optical Splitter, also known as a beam splitter, is a passive optical device that divides a single input optical signal



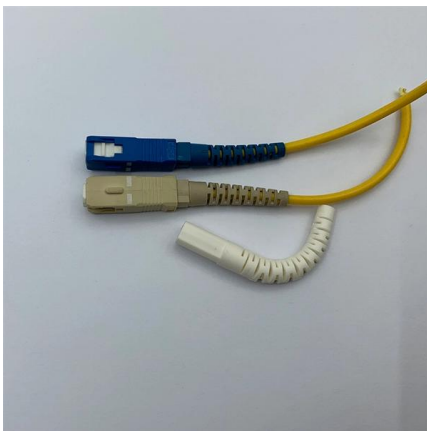
A Brief Guide to Beamsplitters

Standard beamsplitters split incident light without regard to the wavelength, polarization state, or intensity. They are generally used for one-way mirrors and



Beamsplitters: A Guide for Designers , Optics

If cube beamsplitters are used in convergent or divergent portions of an optical beam, they will contribute substantial amounts of unwanted aberration. This can



What Is an Optical Splitter?

Fiber optic splitter, also referred to as optical splitter, fiber splitter or beam splitter, is an integrated waveguide optical power distribution device that

Contact Us

For datasheets, pricing, or custom high-speed optical interconnect solutions, please visit:
<https://www.syropy.com.pl>