

Calculation of Relay Protection Operating Rate





Overview

Use this Protection Relay Setting Calculator to calculate pickup current, time multiplier settings (TMS), operating time, coordination time interval (CTI), and plug setting multiplier (PSM) using fault current, CT ratio, and IEC 60255 curve parameters. The selected protection principle affects the operating speed of the protection, which has a significant impact on the harm caused by short circuits. The main practical method to improve reliability in the electric power industry is redundancy: sectioning and creating additional power centres for the electrical network, installing power transformers, designing and developing power lines, etc.



Calculation of Relay Protection Operating Rate

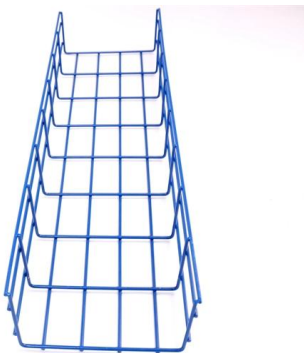
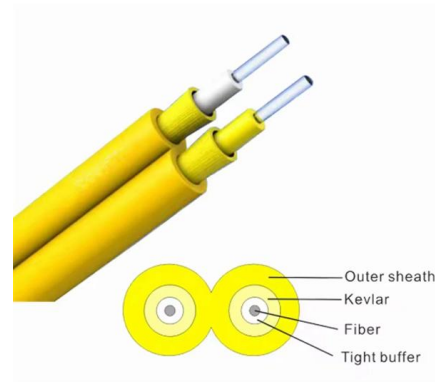


Technical Explanation for Motor Protective Relay

Functions Required of Motor Protective Relays
Motor Protective Relay applications can be grouped by purpose into the following categories.

PSM and TMS Settings Calculation of a Relay: Protection

In the above figure, the over-current relay time characteristics are shown. By using these we can calculate The actual time of operation of the relay



2023-57(1)-1.vp

The solution to this problem is the use of methods and devices for rapid automatic calculation of relay protection actuation data, taking into account the electrical network current state.

2023-57(1)-1.vp

The operating mode of promising 6 - 35 kV distribution electrical networks is characterized by a continuous change in their topology and electrical power flow distribution due to a change in load and



PSM and TMS Settings Calculation of a Relay: Protection

PSM and TMS Settings Calculation of TMS Settings Calculation of PSM Settings Calculation of PSM Method - 1 Calculation of PSM Method - 2 Calculation of Relay Pick Up Current From the figure shown below, we can observe that, when the plug position is increasing, the time in seconds is decreasing. An example relay setting is shown in the figure below The plug position is set at 2.5 times or 250% of the rated CT current. This will give the value of the pickup current. $I_{(Pick\ UP)} = Plug\ position(PSM) * Rated\ CT\ current$ PSM See more on electengmaterials

Videos of Calculation Of Relay Protection Operating Rate

Videos of Calculation Of Relay Protection Operating Rate

Watch video 8:10 Relay setting calculation, IDMT relay, Protection, Electrical Technology and Industrial Practice ELECTRICAL TECHNOLOGY and INDUSTRIAL PRACTICE 218.9K views Dec 29, 2018 Watch full video

more videos

Watch video 22:07 Over Current Protection Relay Setting Calculation, Impedance Calculation, Fault Current Calculation Electrical Express 1.6K views 2 months ago Watch video 10:10 OVER-CURRENT RELAY SETTINGS CALCULATION FOR TRANSFORMER and Relay Coordination RELAY PROTECTION ELECTRICAL 48.8K views Jan 31,



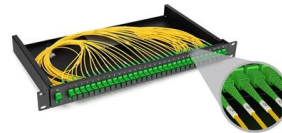
2022Watch video10:24Protection Relay Setting Calculation for MV Capacitor Bank Feeder Julius Salutan2.3K viewsNov 4, 2022Watch full videoScribd

Relay Setting Calculation Overview , PDF , Volt , Relay

The calculations are performed to determine appropriate relay settings that ensure

System for Automated Calculation of the Operation Parameters

The conventional approach to calculating relay protection setpoints loses its effectiveness, as a result of which the sensitivity and selectivity of protection decreases, and

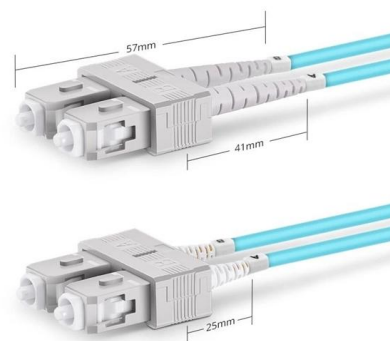


Relay Operating Time Calculation Guide

The document discusses the calculation of relay operating times and provides an example calculation. It describes several types of protection relays including: (1)

Fault Analysis and Relay Timing Calculator , True Geometry's Blog

Popularity: ??? Fault Analysis and Relay Timing Calculator 25 May 2025 Tags: Power System Protection Electrical Power Systems Relay Coordination Coordination of Protective



Duplex SC UPC



Calculation Tools for Distribution System Protection

This calculator performs basic distribution system protection calculations, including base current, secondary current, plug setting multiplier, and relay operating time.



Microsoft Word

OVERCURRENT PROTECTION FUNDAMENTALS
Relay protection against high current was the earliest relay protection mechanism to develop. From this basic method, the graded overcurrent relay



Automatic Calculation and Simulation of Time-Varying Failure Rate of

Based on the traditional method, this paper proposes a method to calculate the time-varying failure rate of the relay protection device by using the support vector machine model, which



Instantaneous Overcurrent Protection (ANSI 50)

This article introduces the working principle of Instantaneous Overcurrent Protection, explains its function, and summarizes the calculation of Instantaneous





Protective

21.2 Fundamental Requirements of Protective Relaying The principal function of protective relaying is to cause the prompt removal from service of any element of the power system when it starts to operate

PSM and TMS Settings Calculation of a Relay: Protection

PSM and TMS Settings
 Calculation of TMS
 Settings
 Calculation of PSM
 Settings
 Calculation of PSM Method - 1
 Calculation of PSM Method - 2
 Calculation of Relay Pick Up Current
 From the figure shown below, we can observe that, when the plug position is increasing, the time in seconds is decreasing. An example relay setting is shown in the figure below The plug position is set at 2.5 times or 250% of the rated CT current. This will give the value of the pickup current. $I_{(Pick\ UP)} = Plug\ position(PSM) * Rated\ CT\ current$
 PSM See more on electengmaterials



Videos of Calculation Of Relay Protection Operating Rate

Videos of Calculation Of Relay Protection Operating Rate

Watch video8:10 Relay setting calculation, IDMT relay, Protection, Electrical Technology and Industrial Practice ELECTRICAL TECHNOLOGY and INDUSTRIAL PRACTICE 218.9K views Dec 29, 2018 Watch full video

more videos

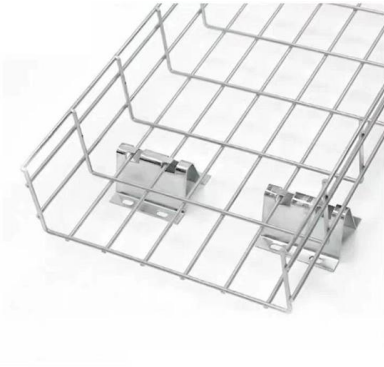
Watch video22:07 Over Current Protection Relay Setting Calculation, Impedance Calculation, Fault Current Calculation Electrical Express 1.6K views 2 months ago Watch video10:10 OVER-CURRENT RELAY SETTINGS CALCULATION FOR TRANSFORMER and Relay Coordination RELAY PROTECTION ELECTRICAL 48.8K views Jan 31,



2022Watch video10:24Protection Relay Setting Calculation for MV Capacitor Bank Feeder Julius Salutan2.3K viewsNov 4, 2022Watch full videoScribd

Relay Setting Calculation Overview , PDF , Volt , Relay

The calculations are performed to determine appropriate relay settings that ensure



2017-51(5)-2.vp

Development of new methods of automated coordination of traditional step-type protection and multidimensional protection based on statistical principles is necessary for creation of an effective

PSM and TMS Settings Calculation of a Relay: Protection

PSM and TMS Settings Calculation of TMS Settings Calculation of PSM Settings Calculation of PSM Method - 1 Calculation of PSM Method - 2 Calculation of Relay Pick Up Current From the figure shown below, we can observe that, when the plug position is increasing, the time in seconds is decreasing. An example relay setting is shown in the figure below The plug position is set at 2.5 times or 250% of the rated CT current. This will give the value of the pickup current. $I_{(Pick\ UP)} = Plug\ position(PSM) * Rated\ CT\ current$ PSM See more on electengmaterials



Videos of Calculation Of Relay Protection Operating Rate

Videos of Calculation Of Relay Protection Operating Rate

Watch video8:10Relay setting calculation, IDMT relay, Protection, Electrical Technology and



Industrial Practice ELECTRICAL TECHNOLOGY and INDUSTRIAL PRACTICE 218.9K views Dec 29, 2018 Watch full video

more videos

Watch video 22:07 Over Current Protection Relay Setting Calculation, Impedance Calculation, Fault Current Calculation Electrical Express 1.6K views 2 months ago Watch video 10:10 OVER-CURRENT RELAY SETTINGS CALCULATION FOR TRANSFORMER and Relay Coordination RELAY PROTECTION ELECTRICAL 48.8K views Jan 31, 2022 Watch video 10:24 Protection Relay Setting Calculation for MV Capacitor Bank Feeder Julius Salutan 2.3K views Nov 4, 2022 Watch full video Scribd

Relay Setting Calculation Overview , PDF , Volt , Relay

The calculations are performed to determine appropriate relay settings that ensure



RELAY SETTING CALCULATION

Pick up current Chosen Required T803 MV Tripping Directional co-ordination O/C Relay with operating time at fault Maximum Through fault current = $0.15 I_n$

CALCULATION AND SETTING OF RELAYS IN TRANSMISSION

The proposal itself and define the different protection zones should be based on impedance lines to be determined by the calculation referred to in the previous section of this article.





Differential Protection example

The first one checks if the IED is operating correctly for faults within the relay's protection zone, while the second verifies if there is any improper operation of the relay for faults outside the protection zone. At

Calculation of Relay Operating Time

In this post, we have learn about calculation of Relay operating time. Important terms like pick up current, current setting, plug setting multiplier.



RELAY SETTING CALCULATION

To determine stability voltage for through fault
 V_s ' Voltage across the relay at IFS (VS) CT
Resistance (RCT)

Protection Relay Setting Interactive Calculator , FIRGELLI

Use this Protection Relay Setting Calculator to calculate pickup current, time multiplier settings (TMS), operating time, coordination time interval





Relay Setting Calculation Overview , PDF , Volt , Relay

Relay Setting Calculation - Free download as Word Doc (.doc), PDF File (.pdf), Text File (.txt) or read online for free. The document provides calculations for relay



Relay Operation Time Calculation Guide

To calculate the actual operating time of a relay, you must know: (1) the current setting, (2) the fault current level, and (3) the ratio of the current transformer. You

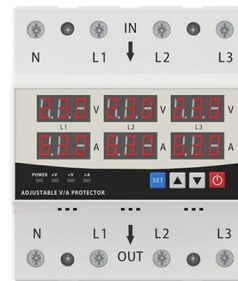
Understand Relay Specifications to Get the Most Out of

Understand Relay Specifications to Get the Most Out of Your Switching System Relay specifications aren't simply numbers on a data sheet-you need to take

LED DISPLAY PANEL

CURRENT STATUS CLEARLY VISIBLE

IT CAN CLEARLY SHOW THE CURRENT STATUS AND VOLTAGE STATUS, WITH EFFICIENT OPERATION AND RAPID RESPONSE.



Overcurrent Protection Fundamentals

Relay protection against high current was the earliest relay protection mechanism to develop. From this basic method, the graded overcurrent relay protection system, a discriminative short circuit





Basic protection relay knowledge

Definite time delay means that the protection operate time dose not change or depend on the fault type or the fault current magnitude. Inverse time delay, on the other hand, depends on the current



Relay Setting Calculation for Motors Electrical Engineering

Efficiency of 96%, power factor 0.92 and DOL starting ratio of 8 are considered as per the Motor data sheet.



Contact Us

For datasheets, pricing, or custom high-speed optical interconnect solutions, please visit:
<https://www.syropy.com.pl>