

Cables are laid in the distribution box





Overview

The cable shall be laid loosely at the bottom of the trench to allow for expansion and contraction, then connect the intermediate and terminal joints. In modern electrical systems, cable distribution boxes (also known as electrical distribution boxes or distribution boxes) play a crucial role as the key hub for managing, distributing, and protecting circuits. Whether it is residential buildings, commercial facilities or industrial sites, the. It takes the incoming power and safely distributes it to different circuits throughout your building. Conduits embedded within walls should not exceed 50mm in diameter, while those in floor slabs should be 15-25mm; a junction.



Cables are laid in the distribution box

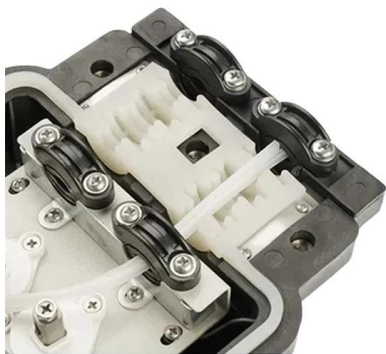


Electric power distribution

Electric power distribution A 50 kVA pole-mounted distribution transformer Electric power distribution is the final stage in the delivery of electricity. Electricity is

Complete Guide For Distribution Boxes Types

Distribution boxes, also known as junction boxes, electrical boxes, or panelboards, are essential components in electrical distribution systems. They serve as



Distribution Box Installation: A Complete Guide to Safe

The distribution box, often referred to as a breaker box, fuse box, or electrical panel, is a critical component of any electrical system. It acts as the central hub for

What is a Distribution Box? - A Comprehensive Guide

A distribution box organizes and controls power flow, ensuring safety and efficiency in electrical systems.



The Complete Guide to Distribution Box: Installation, Types & More

What's the difference between a distribution box and a sub-panel? A distribution box typically refers to the main electrical panel that receives power from the utility service. A sub-panel is



Underfloor cable systems explained in details

Underfloor voids are useful spaces for the installation of cables that are passing through the area as part of the distribution system of the whole building. Cable tray or basket may be



High Quality Aluminum Housing with Compact Size

- Sturdy and Durable
- Anti-corrosion



on video How to Wire a Home Distribution Box

Wiring Accessories for Single Phase Distribution Board Main Distribution Board or Fuse Boards (Consumer Unit) usually contains on the following three main units



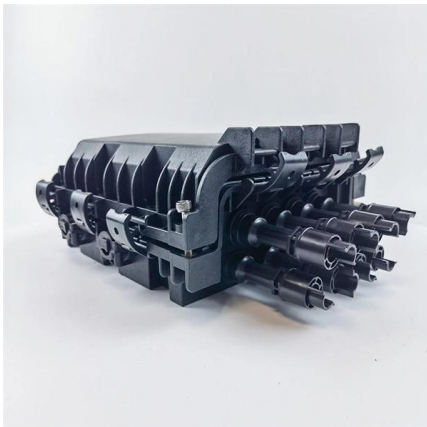
**Distribution Box: Types and Functions ,
Axis-Electricals**

A distribution box houses all the contact breakers, earth leakage units, doorbells, and timers. The electrical power supply comes from the network to the building



Size determination, installation method and wiring mode

The distribution box is the central hub of the home circuit and the general control of our daily power consumption. It is an indispensable electrical equipment. If there



IS 1255 (1983): Code of practice for installation and maintenance of

8.8.3 Cables can also be laid in trefoil arrangement In ducts or on racks which improves current distribution and reduces sheath losses. Non-magnetic clamps may not be essential in this case and it



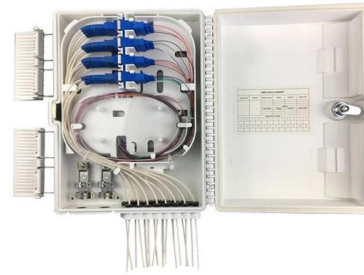
Wire cable laying installation methods procedure

The reel, the permissible radius of the bends in the cable, how to install them in different environments, how to put them together, the equipment used in their



Power Distribution Boxes Explained Simply

Discover the essentials of a Power Distribution Box--how it works, key types, benefits, and tips to ensure safe, efficient electrical power management.



Laying of Underground Cables , Insulation Test Single

The cables to be laid in this way need not be armoured but must be provided with serving of hessian and jute in order to protect them when being pulled into the ducts.

What Is a Distribution Box?

What to Look for When Choosing a Distribution Box If you're going to buy a distribution box, there are several things you should look for. You should



How to Install a Distribution Box--A Comprehensive

Whether you are an electrical contractor or a construction brigade, knowing how to properly and safely install distribution boxes is the basis of



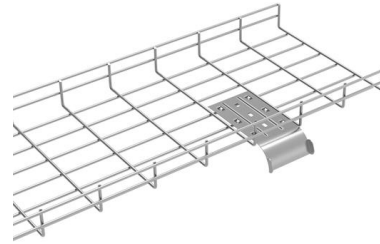
The installation requirements for the distribution box

Introduction
Understanding The Components of A Distribution Box
Selecting The Right Distribution Box
Site Preparation and Location Requirements
Electrical Connections and Wiring
Compliance with Standards and Regulations
Conclusion

What Is a Distribution Box?
A distribution box, also known as a power distribution unit, is a critical component in any electrical system. It is the control center for electricity in your home or business. It takes the electrical power coming into the building and distributes it to different circuits. Each circuit then powers various device

Why Proper Installation Matters
Installing a distribution box correctly is about more than just making sure the lights turn on. It's about safety, efficiency, and reliability. A poorly installed distribution box can lead to a host of problems. These include electrical fires, short circuits, and even complete power failures. Proper installation ensures tha

See more on eabel
Published: Feb 7, 2025
cobtel



Cable Laying: Everything You Must Know - cobtel

Workers simply need to secure the '4 pair' cable lines at the pulling end of the information socket, and from the other end of the conduit, pull the cable to reach



How Exactly Should Cables for Cable Distribution Boxes Be Laid?

First, excavate a cable trench on the ground. The trench size depends on the number of cables. The trench walls shall be plastered with waterproof cement mortar. Cables shall be laid on angle steel

How Does a Power Distribution Box Work



Learn how a power distribution box works step by step--from incoming power to circuit protection and smart monitoring--for safe, efficient electricity delivery.



Ultimate Guide to Transmission & Distribution Cables In

Master the art of installing distribution wire with our comprehensive guide. Unlock valuable insights to streamline your installation process.

Annex I

The cables going out of the cable trays shall be also protected with a fire-wrapping envelope along the whole path (up to the sensor/actuator), except if they are installed inside a metallic conduit, and the



Guide to Electrical Cable Layouts

A comprehensive cable layout plan is a blueprint for installing electrical cables in an industrial setting. This plan includes detailed schematics





What Is an Electrical Distribution Box? A Complete Guide

An electrical distribution box routes power, prevents overloads, and keeps wiring organised--essential for safe, efficient home and

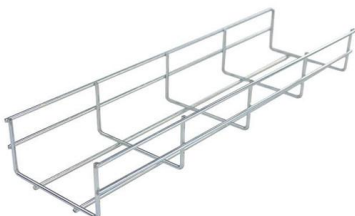


How to Install a Distribution Box--A Comprehensive

Distribution boxes are used for power distribution, circuit protection and cable management, while junction boxes are only used for wire connection

How to Install a Cable Distribution Box Safely and

Reliable cable distribution boxes ensure safe, efficient power management for residential, commercial, and industrial systems. Learn



IEEE 525-2007_accepted

IEEE-SA Standards Board Abstract: The design, installation, and protection of wire and cable systems in substations are covered in this guide, with the objective of minimizing cable failures and their



Contact Us

For datasheets, pricing, or custom high-speed optical interconnect solutions, please visit:

<https://www.syropy.com.pl>