

Cable trays passing through walls and floors





Cable trays passing through walls and floors



Fire sealing cable penetrations

Cable penetrations and fire safety There are many different types of cables and cable penetrations that can pass through fire compartment walls. For example,

Fire rated wall , If

However, if the cable tray does pass through a fire separation, then the tray must be protected with an intumescent coating for a sufficient distance on both sides of the wall. An example of a cable

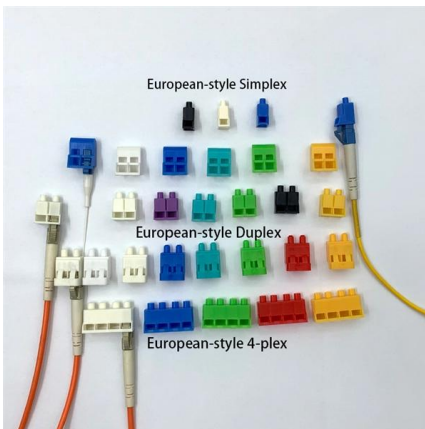


A Contractor's Guide to Effective Firestopping , EC& M

Firestopping has three elements: the fire-rated walls, partitions, floors, or ceilings that have been penetrated; the cables, cable trays, or conduits that make up the

Firestopping cable runs

Preventing the spread of fire through fire barriers is a critical responsibility for cabling installers. In any installation, properly firestopping breached firewalls and floor-to



Technical Guidelines for Cable Tray Installation and

When cable trays pass through walls or floors, seal openings using fire-rated penetration sealing materials. Only use fireproof trays for flame containment or

Cable penetration seals according to European Standards

Cables, cable bundles, conduits, bundles of conduits, empty pipes, cable trays and cable ladders may also pass through penetration seals in walls and floors and



Prevent Fire and Electric Hazards When Cable Trays Used

Where cable trays pass through fire-rated partitions, walls, and floors, appropriate fire-stops should be provided to prevent the spread of a fire or the by





Fire rated wall , If

The penetration of fire rated walls and floors is often necessary to accommodate electricity, data cables and piping systems. Penetrations by ventilation systems are discussed in a separate hazard



Best Practice Guide to Cable Ladder and Cable Tray Systems

This guide covers cable ladder systems, cable tray systems, channel support systems and associated supports intended for the support and accommodation of cables and possibly other electrical

Cable Tray Installations Can Be Tricky: Definitions make

Each cable tray system must be complete before cables are installed and must be exposed and accessible, except where extended transversely



How to Run Wires in Existing Walls and Floors

Do you need to run wire through your existing walls and floors? This DIY guide walks you through the process from start to finish.



Passive Fire Stopping Guide and Regulations

Whether it's a cable tray running through a wall or pipework penetrating a ceiling, any breach in a fire-rated barrier can allow fire and smoke



California Code of Regulations, Title 8, Section 2777. Installation.

(Title 24, Part 3, Section 3-318-5 (d).) (d) Continuous rigid cable supports shall be permitted to extend transversely through partitions or walls, other than fire walls, provided the section of the support



Cable Tray Penetrations: Problem Solved!

Almost always in evidence were fire stopping problems and issues around cable tray penetrations. Cable trays seemed to run through fire rated barriers with reckless abandon; the holes created by



Firestopping Requirements for Cable Trays and

Where cables pass through shafts, walls, slabs, or enter electrical panels or cabinets, openings shall be tightly sealed with firestopping materials in



Fire stop section of the cable tray and cable management NEMA

3M Fire Barrier Moldable Putty+ is a one-part, halogen-free product designed to firestop electrical outlet boxes and a wide variety of through-penetrations including cable, conduit, insulated pipe and metal



Cable Tray Design, Layout, and Overall Wiring

Learn about effective Cable Tray Design and Layout for electrical systems. Our guide covers planning, material choice, safety,



Cable routing , Tips for proper cabling , Simply explained

Cable chains: Cable chains are flexible, often articulated structures that hold cables in a protected space. They are particularly useful for moving parts on desks or



Uncommon Tricks to Fish Wire Through Walls and Ceilings Quickly

In this video I show you how I fish wires through walls to get them to or from the attic, basement, or different floors, to a new box. It may seem like it w



Cable Tray Systems: Requirements and Best Practices

Fire protection measures for cable tray systems may include: Use of fire-resistant or low-smoke, zero-halogen (LSZH) cable types in critical areas. Providing tray covers where needed to

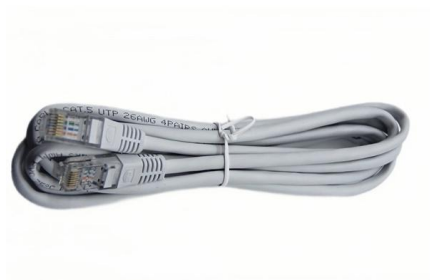


Understand the Importance of Cable Tray Fire Stopping

Cable trays can be a liability for fire prevention and containment, especially when they pass through walls, floors, and ceilings designed to resist fire. These

Cable Tray SHIB NAL

o Where cable trays pass through fire-rated partitions, walls and floors, appropriate fire stops should be provided in accordance with guidance provided by NEC Section 300.21 to prevent the spread of a



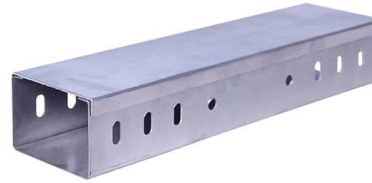
How To Run Cable Wires Through A Wall? Follow

Discover safe cable routing through walls: key tips on stud finders, hazard avoidance, and compliance with safety codes.



Underfloor cable systems explained in details

Underfloor voids are useful spaces for the installation of cables that are passing through the area as part of the distribution system of the whole building. Cable tray or basket may be



Contact Us

For datasheets, pricing, or custom high-speed optical interconnect solutions, please visit:
<https://www.syropy.com.pl>