

Cable trays are allowed to have openings





Overview

Cable trays must remain in open, accessible areas to allow for proper maintenance. Cable Types: Only use conductors rated for open-air environments, such as Tray Rated (Type TC) or Metal-Clad (Type MC) cables. Clearances: Maintain at least 12 inches of vertical clearance above trays for installation and maintenance access (2026 NEC update). Cable trays can be used as a support system for various wiring methods, including service conductors, feeders, branch circuits, communications circuits, control circuits, and signaling circuits (392). In this installment of our Code Corner series, Ryan Mayfield focuses on the 2023 National Electrical Code (NEC) changes concerning cable trays, particularly section 690. What are the reasons for selecting a specific type of cable tray?

The engineer or designer should select the type of cable tray that has the features which best serve the project's requirements.



Cable trays are allowed to have openings



Cable Tray Manual: NEC Article 392 Guide

In-depth guide to cable trays, focusing on NEC Article 392. Covers types, selection, installation, and safety standards for electrical systems.

Cables Allowed in NEC Tray Applications , Anixter

Table 392.10 (see Table 1) lists the type of cable that is allowed to be installed in tray and the types of raceway that can be used. This table includes almost all common types of wire and cable found in



Equipment Grounding Conductors for Cable Tray Systems

Cable tray wiring systems have excellent safety and dependability records. These excellent records are the result of cable tray's unique features plus the proper



Explaining NEC Article 392 on Cable Trays

NEC Article 392 explains cable trays, their components, appropriate wiring methods for cable trays, and instances where they are and are not



Cable Tray Type Selection

Single conductor cables and Type MV cables must be installed in ladder or ventilated trough cable trays. Single conductor cables and Type MV cables are not allowed to be installed in solid bottom cable



Cable Tray Width, Dimensions and Specifications as per

Learn about cable tray width dimensions and specifications as per NEC standards. Understand types, sizes, materials, and installation guidelines for safe and



1910.305

Metal raceways, cable trays, cable armor, cable sheath, enclosures, frames, fittings, and other metal noncurrent-carrying parts that are to serve as grounding conductors, with or without the use of





NEC Article 392: Cable Tray Systems

It provides rules for acceptable wiring methods that can be



Cable Tray Dimensions and Specifications as per NEC

Many electrical systems employ cable trays. They route cables safely & efficiently. NEC defines minimum cable tray size & electrical installation

Cable Tray Installation Rules (NEC 392) - Electrical Trader

Despite their versatility, cable trays are not suitable for every situation. They are strictly prohibited in hoistways or any location where they could face severe physical damage. Cable trays



Technical Guidelines for Cable Tray Installation and

Shortest and Straightest Path: To reduce cable loss and simplify maintenance, cable routes should be as short and straight as possible. Segregation of Power and



FactSheet

FactSheet Electrical Safety Hazards of Overloading Cable Trays According to the 2005 National Electrical Code® (NEC), a cable tray system is " unit or assembly of units or sections and



Cable Tray Type Selection

The only reason to select a ventilated trough cable tray over a ladder type cable tray is aesthetics. No drooping of small cables is visible. The ventilated trough cable tray does provide more support to the

Understanding NEC Article 392

You cannot begin laying cables into a tray until all physical supports and metallic sections are fully connected. Additionally, the system must be securely fastened to the building's

Pre-Terminated Patch Panel

- Standard 19" width
- Max 144 fibers in 1U
- Ultra-High Density Ready



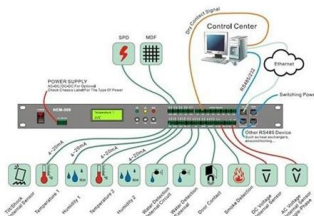
Dual-nail, easy install & maintain



Lightweight ABS NPO cassette



Premium sheet metal with matte coating



NEC Article 392 Guide: Ensuring Compliance for Cable

To ensure that a cable tray is safe, all the bolts should be tight, and all the connections should also be clean. Without a properly bonded tray, the tray

Cable Tray Questions , Cable Tray Institute



Adequate room should be provided around the cable tray to allow for the set-up of cable pulling equipment and to provide easy access for the installation of or removal of cables.



Cable Tray Systems: Requirements and Best Practices

Comprehensive guide to cable tray systems requirements: tray types, materials, loading, supports, bonding, routing, and best practices for safe electrical cable management.



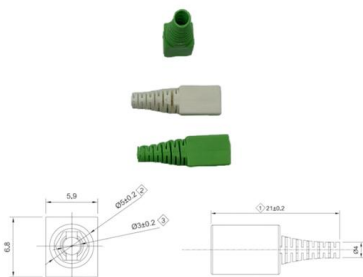
Firestopping Requirements for Cable Trays and

Where cables pass through shafts, walls, slabs, or enter electrical panels or cabinets, openings shall be tightly sealed with firestopping materials in



Cables Allowed in Tray

CABLES ALLOWED IN TRAY Cable tray is one of the most common methods of supporting wire and cable. There are many different types of cable tray including basket, ladder and solid-bottom. Tray





Cable Tray Technical Guide A practical guide to product selection and

Cable Tray Technical Guide A practical guide to product selection and installation This guide for engineers and installers has been developed by ABB as a practical reference regarding cable tray

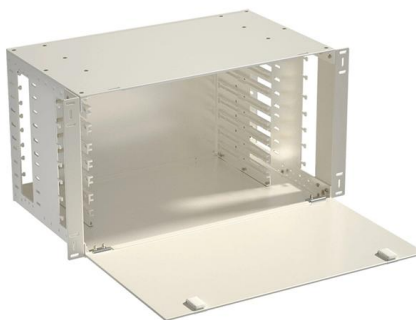


Cable Tray Fill Rules (NEC 392)

Cable tray types, NEC fill limits, single-conductor vs multiconductor differences, ampacity derating, and when to use cable tray vs conduit.

2005

Optical fiber cables have been allowed to be supported in cable trays as per Section 770.6. Optical fibers may also be present in Type TC cables as per UL Standard 1277.



Types of Cable Typically Used in Cable Tray

Type ITC - Instrumentation Tray Cable - (NEC Article 727) - These types of cables are instrumentation cables and are available in shielded or unshielded



Installation Of Cable In Cable Trays: NEC, Safety

Installation of Cable in Cable Trays ensures proper routing, cable management, NEC compliance, grounding, fire safety, and load capacity.



Cable Tray Technical Guide A practical guide to product selection and

Cable tray installed in a hazardous location must contain only those cables that are appropriate for this type of environment as defined in Chapter 5 of the NEC.

Code Corner: 2023 NEC Article 690.31 (C) and (C) (2)

Historically, the NEC has allowed cable trays, but has lacked specific guidelines for sizing conductors and using smaller conductors like PV wire and



Cable Laying: Everything You Must Know

After determining the routing of the cabling, a structured cabling project initially needs to consider the laying of cable trays, which can be made of metal, conduit, or



How to Manage Cables in Cable Trays: Principles and Methods

Learn how to manage cables in cable trays effectively with our comprehensive guide for cable classification, protection, and installation to ensure electrical system safety and efficiency.



Contact Us

For datasheets, pricing, or custom high-speed optical interconnect solutions, please visit:
<https://www.syropy.com.pl>