

Cable trays and supports need to be fixed





Overview

Cable trays must be adequately supported to carry the weight of cables plus any additional loads (such as snow or ice for outdoor installations). Use supports (wall brackets, trapeze hangers, or pedestal supports) at intervals consistent with the tray load rating and. This publication is intended as a practical guide for the proper and safe* installation of cable ladder systems, cable tray systems, channel support systems and associated supports. It also offers future-ready ideas, troubleshooting guidance, and useful suggestions to guarantee your cable systems. With the RS 60 cable tray installation system, we offer you the last installation type of the standard support construction, so that you can implement all installations required in the building project with circuit integrity maintenance on the basis of the standard support construction. Whether you're managing voice, data, or electrical cables, ensuring your trays are installed correctly is essential to keeping everything neat, secure, and functional.



Cable trays and supports need to be fixed



Inspection of Cable Trays, Installation Instructions Of Cable Tray

Cable trays must be properly fitted and supported according to the installation instructions. Overloading cable trays can lead to breakdown of the tray, its connecting points and/or supports, causing hazards

Cable Tray SHIB NAL

Cable trays are not raceways, but they are treated as a structural component of a facility's electrical system. Cable trays are a part of a planned cable management system to support, route, protect and



Precautions for Cable Tray Installation

Cable Tray Installation Guide The correct installation of cable trays is crucial for establishing a reliable and efficient cable system. It ensures that cables are

Common Issues in Steel Cable Tray Installations

Improper Support and Fixing: Insufficient or loose brackets, hangers or supports may allow trays to vibrate or shift, risking cable damage. Adhere strictly



Cable Tray Systems: Requirements and Best Practices

This article explains the main requirements and good practices for cable tray systems, including tray types, materials, loading, supports, bonding, cable selection, and installation details.

Cable Tray

All changes of direction must be supported in the immediate vicinity of the joints (distance ≤ 150 mm) by an appropriate supporting structure. Inclined cable trays



Guide to cable support systems

In addition, a cable support system can be used to separate and arrange cables in groups. The systems are installed on ceilings, walls or floors. The material of a cable support system is normally steel or





Cable Tray Accessories, Cable Tray Hangers & Support , RS

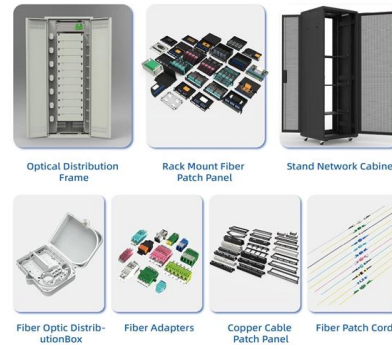
Cable trays are components used in the wiring of buildings to support insulated cables and organise them to be hidden from view. They offer an alternative to open wiring or electrical conduit systems



Cablofil CEQ100 Pre-Galvanised Steel Wire Cable Tray Central

Pre-galvanised central hanger bracket for wall mounted support of 50 mm wire cable trays. Fixed 90° design enables secure and stable installation with reliable corrosion resistance.

An Extensive Library of Self-Developed Products



Guide to cable support systems

Support systems for cable support structures are used to bridge large loads and support spacings and to create complex section routes. The systems allow large support spacings of wide span systems



Cablofil UC35GC Hot Dip Galvanised Steel Wire Cable Tray Support

Features Wall and ceiling bracket designed for cable support systems, ensuring secure installation in industrial environments. Compatible with wire mesh trays and supports a fixed system height of



Cable ladder is more commonly used where heavier cables need to be carried, but is more expensive. Apart from the choice between solid or perforated cable tray and wire basket, as Rendell

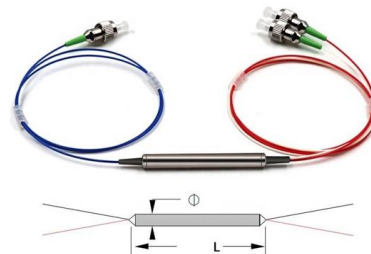


How to Fix Common Cable Management Issues using

Discover common cable management problems and how cable tray accessories effectively solve them to ensure safety and performance.

100+ Essential Questions Answered About Cable Trays:

Discover over 100 expert answers about cable trays, covering key topics like material selection, load capacity, installation methods, and maintenance.



Cable Tray Installation and Maintenance Considerations

Learn about effective Cable Tray Installation and Maintenance. Get practical tips for planning, fitting, and looking after your cable trays.



A Guide to Installing and Supporting Electrical Cable Trays

A professional guide to installing electrical cable tray systems per NEC Article 392. Covers support, securing cables, and fill calculations.



Cable Tray Systems - CableOrganizer

Cable tray systems are the perfect solution for running large quantities of power or data cables overhead or under-floor. Also known as baskets, trunking, or cable



Best Practice Guide to Cable Ladder and Cable Tray Systems

This publication is intended as a practical guide for the proper and safe* installation of cable ladder systems, cable tray systems, channel support systems and associated supports.



Cablofil R55DC Hot Dip Galvanised Steel Wire Cable Tray Floor

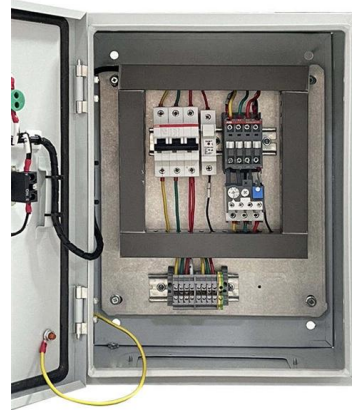
Floor stand off bracket providing separation support for wire mesh and cable trays. Suits 100 mm tray heights with screw fixed mounting for stable installs. Hot dip galvanised steel with 1500 N load





Cablofil UC35GS Pre-Galvanised Steel Wire Cable Tray Support

Support cradle for wall or ceiling mounting of wire mesh trays. Designed for fixed 30 mm system height with screw fixed tray mounting for accurate installation. Pre-galvanised steel provides corrosion



Best Fixing and Mounting Options for Cable Trays , CMW

Discover the best fixing and mounting options for cable trays and wire mesh basket trays. CMW shares tips for efficient cable management.



Decoding Cable Tray Support Structures: Tips and Insights

Discover efficient cable tray support structures for optimal cable management. Learn about hanger, wall-mounted, and Unistrut systems for safer



Contact Us

For datasheets, pricing, or custom high-speed optical interconnect solutions, please visit:
<https://www.syropy.com.pl>