

Cable tray vertically fixed cable





Overview

A Vertical Cable Tray is a specialized support system designed to carry electrical and data cables securely in a vertical or riser direction. Think of it as the "spinal cord" or the " elevator shaft " for your cabling infrastructure, providing a protected and structured pathway for cables to travel. Briticom™ Cable Trays are regularly used to manage cabling inside a data rack, the ventilated tray has an imprint profile of various size and shape openings which allows for airflow circulation around the cabling and easy fitting of different size cable straps and cable bundles. The vertical cable ladders STL, STM and STIC meet the exact specifications and definitions of DIN 4102 Part 12 of November 1998, such as height of the cableladder / tray, width of the cable ladder/ tray, proportion of holes in the cable tray, distance between rungs of the cable ladder, material.



Cable tray vertically fixed cable



How to Install Cable Tray: A Comprehensive Guide to Different Cable

Welcome to our step-by-step guide on installing cable trays! In this video, we'll explore the different types of cable trays available and provide detailed instructions for their installation.

Can wire mesh baskets and cable trays be installed vertically or

Discover whether wire mesh baskets and cable trays can be installed vertically or overhead. Practical tips and examples for smarter cable containment.

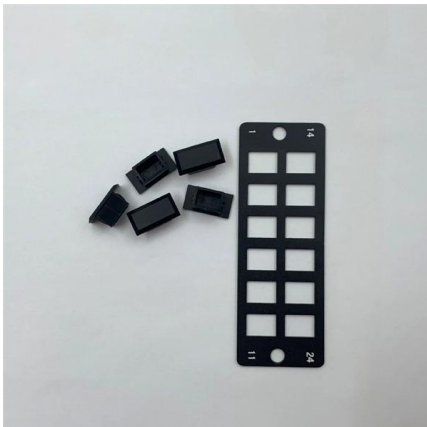


Vertical Cable Ladders

The STL, STM and STIC vertical cable ladders meet the exact specifications of DIN 4102 Part 12, such as the rail height and the width of the cable ladder.

Cable Tray Installation Method Statement

Below is the detailed cable tray installation method statement not only for cable tray but also applicable for GI ladder and trunking for indoor and outdoor applications



Hallam Racks - Cable Trays

Hallam Racks' Vertical Cable Trays offer an easy vertical run of cable management up the whole height of the cabinet. Category: Cable Management Solutions.

All-Rack 300mm Vertical Cable Tray -- adk-security

Organize your cables efficiently with the All-Rack 300mm Vertical Cable Tray. Designed for seamless integration, this tray offers a sturdy solution for managing



A Guide to Cable Tray Accessories and Their Functions

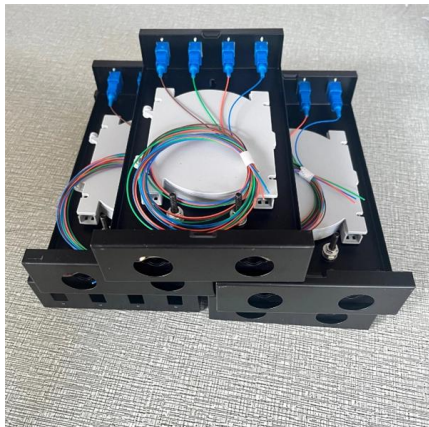
Explore a detailed guide to cable tray accessories and understand their uses in ensuring safety, stability, and efficiency in electrical system





What is a Vertical Cable Tray?

A Vertical Cable Tray is a specialized support system designed to carry electrical and data cables securely in a vertical or riser direction. Think of it

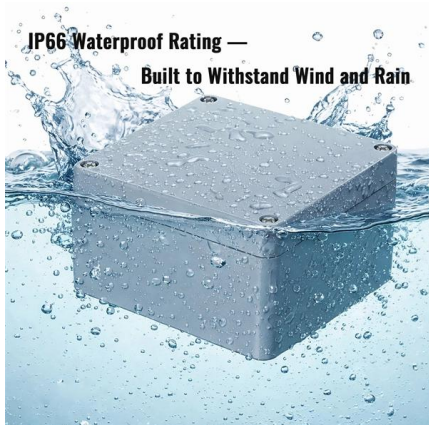


Instrumentation Cable trays Installation in vertical

The above issues can be minimized to a great extent if we can install the instrumentation cable trays in vertical orientation .Although a little bit higher

Best practice guide to cable ladder and cable tray

Cable ladder and cable tray systems The following recommendations are intended to be a practical guide to ensure the safe and proper installation of



Vertical Cable Trays

Vertical Cable Trays 1-28 of 28 products 12U Vertical Cable Management Tray 100mm wide Black £10.95 View Product Add to Cart

GENERAL INFORMATION



As demonstrated in the previous paragraph, Optical Cable Corporation's cable can be installed in vertical rises for great distances. However, due to the practical nature of installing cable, the weight



There are several ways to fix the cover plate of cable tray

The screwing and fastening method is suitable for horizontal or vertical installation of the bridge. 3. Buckle fixing method cable tray cover plate does not need to be punched, and the cover



Cable Tray in High-Rise Buildings: Vertical Cable

Rack cable management (RCM) is a rack where all cables are arranged together. There are several types of cable management solutions -- horizontal cable



Best Practice Guide to Cable Ladder and Cable Tray Systems

This guide covers cable ladder systems, cable tray systems, channel support systems and associated supports intended for the support and accommodation of cables and possibly other electrical





Vertical Cable Tray (up to 47U) - Metal - Model 01

Briticom® Vertical Metal Cable Tray are regularly used to manage cabling inside a data rack, the ventilated tray has an imprint profile of various size

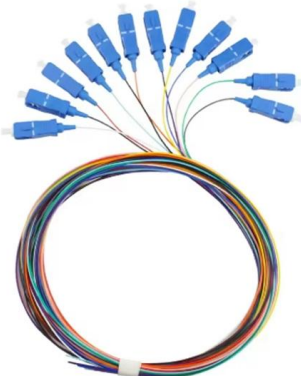


Cablofil Electro-Zinc Steel Cable Tray Radius Support 150mm

Overview Cablofil electro-zinc steel radius support provides horizontal hinged joint support for wire mesh cable trays in cable support systems, enabling controlled direction changes along tray runs. It is

Vertical Cable Manager Tray

Vertical cable management tray runs vertically from the top to bottom of the server cabinet and allows you to route cables to data switches or UPS devices in a



Hammond® Manufacturing Vertical Cable Tray with Optional PDU

The VCT Series vertical cable trays provide a flexible solution for cable routing and support within server cabinets. Constructed from durable 16 gauge steel, these trays deliver reliable vertical cable



Cable trays (for vertical cabling)

Cannon steel cable tray provide an attractive and very durable product for exceptional, simple cable management. In order to provide a neat support for

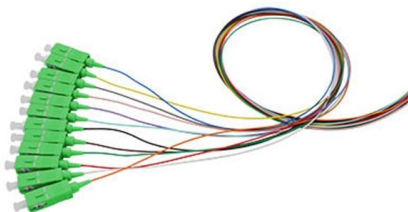


Cable Tray - Unitrunk

Light Duty Cable Tray Medium Duty Cable Tray Heavy Duty Cable Tray Straight Coupler - Light Duty Fish Plate - Light Duty Fish Plate - Medium/Heavy Duty

Cablofil R15/100S6 316L Stainless Steel Wire Cable Tray Stand-Off

Overview Cablofil R15/100S6 stand off bracket provides offset wall or ceiling support for wire mesh cable trays in cable support systems, allowing spacing from the mounting surface. It is compatible with



Fire Rated Cable Encasements: Invicta Durasteel

Our 4-hour fire rated cable encasements provide comprehensive fire and blast protection, shielding cables from fire and containing high voltage cable fires



Verticals Cable Tray Management Solutions , Cable

Hutaib Electricals, a trusted cable tray manufacturer in India, offers vertical cable management solutions for high-rise buildings. Their basket cable trays and wire



Vertical & Overhead Installation of Cable Trays and Wire Mesh

Yes, wire mesh baskets and cable trays can be installed vertically or overhead, and they absolutely should be in many cabling projects. Whether routing Cat 6 cables in a tight riser space or

Contact Us

For datasheets, pricing, or custom high-speed optical interconnect solutions, please visit:
<https://www.syropy.com.pl>