

Cable tray used as an electrical box





Cable tray used as an electrical box



Cable tray

In the electrical wiring of buildings, a cable tray system is used to support insulated electrical cables used for power distribution, control, and communication.

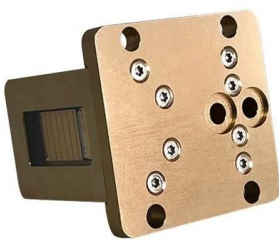
Cable Tray Types and Sizes

Explore various cable tray types and sizes for electrical installations. Learn about ladder, perforated, solid-bottom, wire mesh, and channel trays in this complete



Cable Tray Types and Sizes

An electrical cable tray is a type of containment system used to support insulated electrical cables for power distribution, control, and communication. Today,



Types of Cable Trays: Benefits and Uses

Different types of cable trays offer key benefits, optimizing cable management and enhancing efficiency in electrical systems.



What are Cable Trays? Everything you need to know

In industrial environments, proper cable management is essential to maintaining efficiency, safety, and compliance with industry standards. Cable



Types of Cable Trays - Advantages, Applications and Sizes

In this article, we'll explore the most common types of cable trays, their advantages, and the cable tray sizes available to help you choose the right one for your project.



Cable tray vs cable basket vs cable ladder vs cable

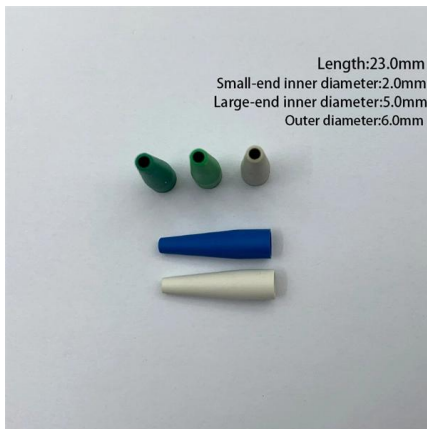
This article will discuss the four most common types of cable containment and their uses: cable tray, cable basket, cable ladder, and cable





Types of Cable Trays - Advantages, Applications and Sizes

Cable trays are essential components in electrical systems, providing a safe, organized, and efficient means of managing cables. They are widely used across industries such as

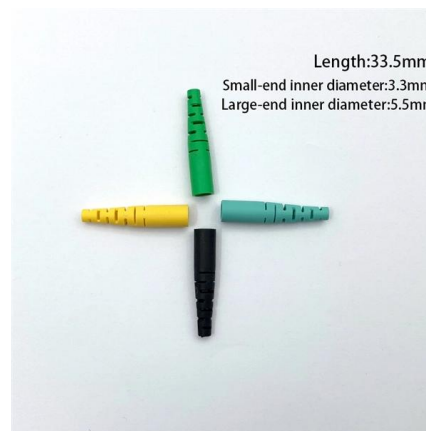


Types of Cable Trays - Purpose, Advantages,

Cable tray systems are alternatives to wire ways and electrical conduit, which completely enclose cables. Cable trays are capable of supporting all types of

Cable Tray Technical Guide A practical guide to product selection and

What is a cable tray ? Both the Canadian Electrical Code (CEC) and its American counterpart, the National Electrical Code (NEC), consider cable tray systems to be structural systems. en completely



What Is Cable Tray (Purpose, Materials And Applications)

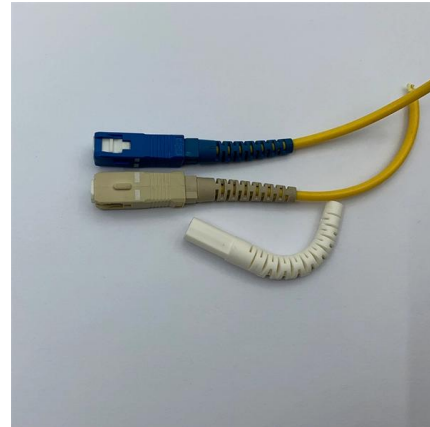
What is cable tray? Learn about its types, uses in industries, safety benefits, and how it organizes and supports cables in various environments.





What are Cable Trays & Different Types of Cable Trays

These trays provide a reliable, rigid, and durable structural system that is used to accommodate all types of electric cables and intricate wiring.



Where Do We Use Electrical Cable Tray?

Learn where electrical cable trays are used and how they improve wiring safety, management, and efficiency in any project.

Types of Cable Trays: Ladder, Perforated, Basket, Solid

Cable trays support insulated electrical cables in industrial and commercial settings. There are several types of cable trays, including ladder,



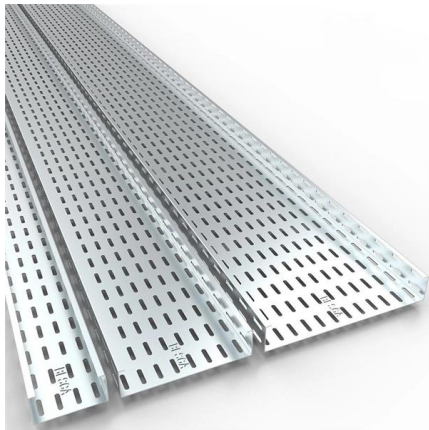
Cable Tray and its types & Sizes

What is Cable Tray? An Electrical cable tray is a type of a containment used to support insulated electrical cables used for power distribution, control, and



Cable Tray vs. Wireway: Which Offers the Best Cable Protection?

Cable trays can be installed overhead, under floors, or on walls, depending on the application. They are available in a variety of



What is Cable Tray and How it is used in Industrial

What is Cable Tray? In electrical cabling, a cable tray is a metallic structure used to handle insulated electrical power distribution, control, and

What Is A Cable Tray? 5 Types Of Cable Trays

Cable trays are a critical component in modern electrical systems, providing a structured pathway for the organization and protection of electrical, data, and communication cables. They serve as an



Complete cable tray manual for electrical engineers and

Complete cable tray manual for electrical engineers and designers (on photo: power cable management ladder tray systems assembled aluminum cable tray ladder



Top 7 Types of Cable Trays and Their Applications

Discover the top 7 types of cable trays including Ladder, Perforated, and Wire Mesh. Learn their applications and benefits for efficient cable



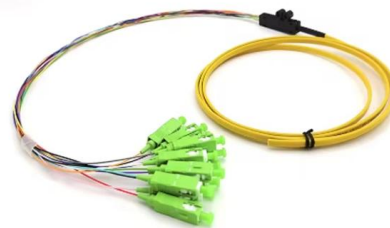
Types of Cable Trays - Purpose, Advantages,

Cable tray is alternatives to wire ways and electrical conduits, which completely enclose cables. Study types of cable trays, purpose, advantages.



Comparing Electrical Cable Tray Materials- Aluminium,

Aluminium, steel, or plastic? Compare key features of electrical cable tray materials to find perfect match for your building's requirements.



Cable tray

In the electrical wiring of buildings, a cable tray system is used to support insulated electrical cables used for power distribution, control, and communication. Cable trays are used as an alternative to open wiring or electrical conduit systems, and are commonly used for cable management in commercial and industrial construction. They are especially useful in situations where changes to a wiring system are anticipated,





Cable Tray Technical Guide A practical guide to product selection and

Cable tray is considered to be a system. It must provide continuous support for cables, and the electrical continuity of the cable tray system must be maintained.



7 Types of Cable Trays: How to Choose the Right One

Cable tray systems are engineered support structures designed to route, support, and protect insulated electrical cables used for power distribution,

Cable Trays Roles: More Than Just Holding Wires

What are cable trays for? We explain cable trays roles in electrical systems: supporting, protecting, and organising cables



Types of Cable Typically Used in Cable Tray

Types of Cable Typically Used in Cable Tray The purpose of a cable tray system is to support, route, and protect cable as part of the cable management system.



Contact Us

For datasheets, pricing, or custom high-speed optical interconnect solutions, please visit:

<https://www.syropy.com.pl>