

Cable tray tilted upwards at 90 degrees





Overview

A perforated type cable tray vertical inside bend is a fitting used to change the direction of a cable tray system vertically, typically at 90-degree angles, allowing cables to turn upwards or downwards within a confined space. Elbow joint RVS is pushed inside the cable tray and attached with the included screw set. Great if you are new or just forgot how to do it, this easy to follow guide makes it so simple. How can I change this vertical fitting angle to another value (ex: 30°)?

I know I can do this from an elevation view, but that is not very.



Cable tray tilted upwards at 90 degrees



Make a 90 Bend in Electrical Cable Tray

How to make a 90 electrical cable tray bend to measurement of your choice. Great if you are new or just forgot how to do it, this easy

HOW TO BEND 90 DEGREE OF CABLE TRAY BASIC TUTORIAL

In the electrical wiring of buildings, a cable tray system is used to support insulated electrical cables used for power distribution, control, and communication.

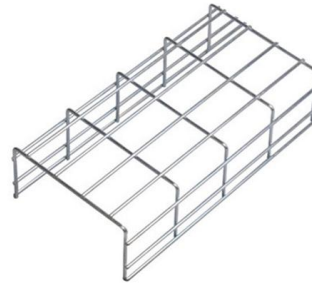


Cable Tray ALTF04SVI9012 Cable Channel Vertical Inside Bend, 4 in

Aluminum cable channel fitting 4 inches width solid trough vertical inside bend 90 degree 12 inches radius

Perforated Vertical Inside Bend , Pratik Cabletray

A perforated type cable tray vertical inside bend is a fitting used to change the direction of a cable tray system vertically, typically at 90-degree angles, allowing



How to make a 0-90° vertical angle for cable trays?

How to make a 0-90° vertical angle for cable trays? Elbow joint RVS is pushed inside the cable tray and attached with the included screw set. Elbow joint RVS can be



Choosing Cable Tray Sections for 90 Degree Turns

Learn about cable tray configurations. This video explains which type of cable tray section is best for creating a 90 degree turn while paralleling a platform. Understand horizontal T sections for



90° Cable Tray Bend Installation Guide

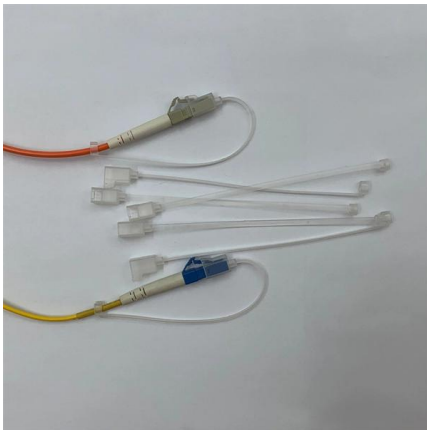
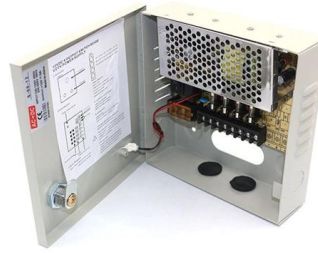
Kable Kontrol Cable Tray 90 Degree Short Bend Instructions - Free download as PDF File (.pdf), Text File (.txt) or read online for free. The document provides





Types of Bends in Wire Mesh Cable Trays: A Detailed

Wire mesh cable trays are widely used in industrial and commercial installations to support and manage cables effectively. One of their greatest



HOW TO BEND 90 DEGREE AND 45 DEGREE OF CABLE TRAY USING 3 BASIC FORMULA

PVC Trunking 12*7mm Adhesive Ultra-Small Wire Channel Surface-mounted Wire Duct Square Flame Retardant Cable Trunking Floor Cable Tray GXHL

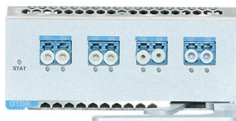
How to Make a Rolling 90 in Tray

Here's how to create a seamless rolling 90-degree bend in cable tray! ? This guide walks you through each step, from marking and cutting to forming and joining.



How to Make a 90-Degree Bend in Cable Tray , TikTok

Learn how to easily create a 90-degree bend in cable tray with this step-by-step tutorial. Follow along to mark, cut, file, and bend the tray to perfection! #electriciansoftiktok #electrician





How to construct a flat 90° bend for Cable Trays

The gusset is produced by cutting a piece of tray to the required size, removing 1 lip completely and bolting it to the 90° bend (H). This completes the



Choosing Cable Tray Sections for 90 Degree Turns

Learn about cable tray configurations. This video explains which type of cable tray section is best for creating a 90 degree turn while paralleling a platform.

ADVANCED S PRODUCTS | ASP 90° Turn Cable Tray

Attach Cable Trays to Cable Tray Supports and connect to other Cable Trays with splice clamps to form continuous system. Adjust height of each Cable Tray Support and correct height if necessary.



ST/APC-ST/APC Singlemode Simplex
3.0mm Fiber Optic Patch Cord

How to create a 90° gusset bend (45°x2) cable tray

Now you know that 160mm in 100mm cable tray will be 90°. So you can divide the 160mm by any number you want to get as many bends as you want. Eg. Divide



90° Cable Tray Bend Installation Guide , PDF

The document provides instructions for the installation of 90° short radius bends for wire mesh cable trays in various widths (4", 6", and 12"). It lists the required



How to Easily Create a 90-Degree Bend in Cable Tray , TikTok

Keywords: cable tray 90 degree bend, bend cable tray, marking cuts for cable tray, pinching cable tray, creating a 90-degree bend, cable management tools, electrician tips and tricks This information is AI generated and may return



Putting a 90 degree bend into Cable Tray

In this clip, David from EzyStrut has a length of EzyTray. He is going to show you how to use EzyStrut's ET/ET3/ET5 Radius plate to create a 90 degree bend in a piece of these cable trays



- IP65/IP55 OUTDOOR CABINET
- IP54/55
- OUTDOOR ENERGY STORAGE CABINET
- OUTDOOR BATTERY CABINET

How to Bend Cable Tray Students trading aid on how best to put an

Includes a full demonstration on how bend steel cable tray using a bending machine. This is a step by set guide on how to make (fabricate) a 90 degree bend in metal cable tray and use



Cable tray

There are situations when I need to change the elevation of a cable tray by a small value (ex: 5cm / 2 inches) and in this value I cannot fit two 90° elbows. How can I change this vertical fitting

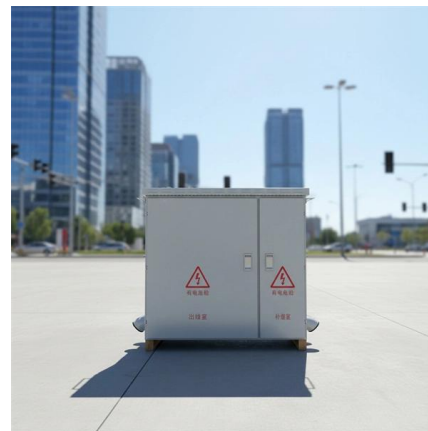


90° Vertical Up Cable Tray , Advanced Support Products

This 90 degree tray offers a 24in bend radius for ease of coax installation. Connects to any ASP cable tray with splice clamps provided.

ASP 90° Up Cable Trays

Materials Cable Trays: All ASP Cable Trays and components are engineered to work together as a continuous system as well as stand-alone elements. ASP 90° Vertical Up Cable Trays offers a 24"



Cable tray horizontal bends , Information by Electrical Professionals

Manufacturer offers factory bends 30 degrees to 90. We are installing tray around a clarifier at a WWTP and about every 20 feet we need around 10 degrees of bend.



90° adjustable bend, vertical, screw connection , OBO

Fittings, cable trays, plug connection - 90° adjustable bend, vertical, screw connection.



AutoCAD MEP 2022 Help , To Rotate Cable Trays , Autodesk

To rotate a cable tray run Select an isometric view direction, such as SW Isometric. Select a cable tray, right-click, and click Rotate Cable Tray Direction. This action rotates the segment or fitting 90

Contact Us

For datasheets, pricing, or custom high-speed optical interconnect solutions, please visit:
<https://www.syropy.com.pl>