

Cable tray supports without welding





Cable tray supports without welding



How to Install Cable Tray: A Comprehensive Guide to Different Cable

Welcome to our step-by-step guide on installing cable trays! In this video, we'll explore the different types of cable trays available and provide detailed instructions for their installation.

Cable tray

In the electrical wiring of buildings, a cable tray system is used to support insulated electrical cables used for power distribution, control, and communication. Cable

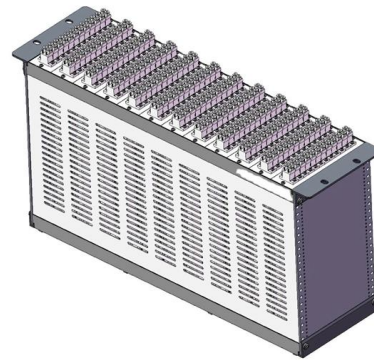


Best Practice Guide to Cable Ladder and Cable Tray Systems

This publication is intended as a practical guide for the proper and safe* installation of cable ladder systems, cable tray systems, channel support systems and associated supports.

Types of Cable Trays: Ladder, Perforated, Basket, Solid

Cable trays support insulated electrical cables in industrial and commercial settings. There are several types of cable trays, including ladder,



Cable Tray

With the RS 60 cable tray installation system, we offer you the last installation type of the standard support construction, so that you can implement all installations



Guide to cable support systems

Support systems for cable support structures are used to bridge large loads and support spacings and to create complex section routes. The systems allow large support spacings of wide span systems



Cable Tray Supports & Electrical Systems , Mechano Max

Mechano Max delivers modular bolt-together electrical and instrumentation supports that ensure quick installation, full adjustability, and cost savings--eliminating

Cable tray manual



Where a cable tray wiring system containing Type ITC cables will be exposed to any significant amount of hot metal splatter from welding or the torch cutting of metal during construction or maintenance

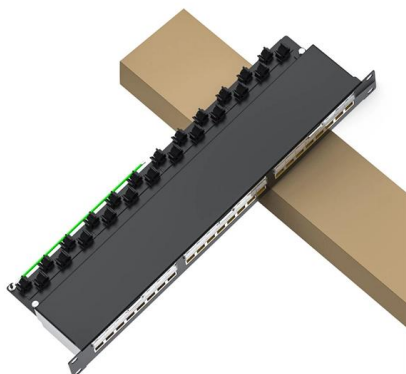


Mastering Cable Tray Welding: Tips for Seamless Installations

Cable tray welding is essential for ensuring the structural stability of cable tray systems in industrial and commercial wiring setups. This process involves joining metal components to create a robust support

100+ Essential Questions Answered About Cable Trays:

Discover over 100 expert answers about cable trays, covering key topics like material selection, load capacity, installation methods, and maintenance.



Best Fixing and Mounting Options for Cable Trays , CMW

Regarding cable management, the fixing and mounting you choose for your cable trays can make or break your setup. Whether you're managing voice, data, or electrical cables, ensuring



Electrical Supports

From single trays to complex multi-tiered systems, modular supports give you the flexibility you need. Our wide range of fasteners also allow you to fasten directly



B-Line series Cable Tray Design Considerations

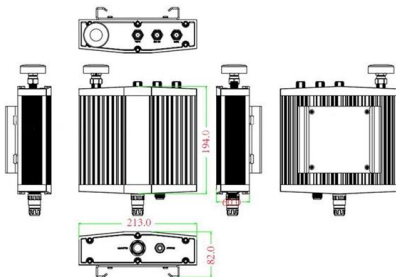
Our wind certification report provides you with list of acceptable B-Line series cable tray supports, fittings and covers based off of the environmental conditions, cable loading, and type of cable tray in your

Cable Tray Systems

Channel cable tray secures cables using Eagle Basket pre-punched holes. New pre-punched holes allow the secure attachment of cables to the inside of the channel



Mechanical drawing



Typical Design Philosophy of Cable Trays for Power

Cable Tray Support System Cable tray supports shall be fabricated from standard MS angles/channels/flats and depending upon site conditions it shall be



Cable Tray Support Solutions: Safety, Compliance,

Learn how PHP Systems/Design uses the strength-stiffness ratio to create durable cable tray solutions, ensuring safety and reliability.



Cable Tray Supports & Electrical Systems , Mechano Max

Electrical & Instrumentation Supports Mechano Max delivers modular bolt-together electrical and instrumentation supports that ensure quick installation, full

Connecting Cable Trays: Your Guide to Secure and

Learn common methods for connecting cable trays safely and efficiently. Our guide covers splice plates, quick-connects, and key tips for secure



Cable Tray SHIB NAL

Cable trays are not raceways, but they are treated as a structural component of a facility's electrical system. Cable trays are a part of a planned cable management system to support, route, protect and



Utility Cable Support Welding Guide

Welding Metal Supports for Utility Cables: A Comprehensive Guide In the ever-evolving world of utilities system construction, welding plays a crucial and multifaceted role. From ensuring structural integrity



Beama Best Practice Guide , Installation Of The System , Cable

2.2 Structural characteristics When considering the installation of the cable supports system it is imperative to avoid the cutting or drilling of structural building members without the approval of the

Guide to cable support systems

In addition, a cable support system can be used to separate and arrange cables in groups. The systems are installed on ceilings, walls or floors. The material of a cable support system is normally steel or



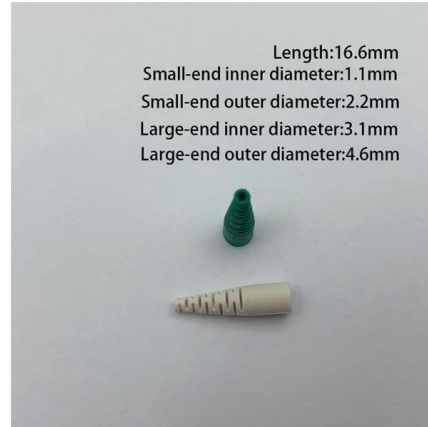
Cable Tray System

Cable Tray- Solid & Ventilated Type Adhwa Channel type Cable Tray Systems constructed from one piece, solid or ventilated bottom channel section. Adhwa



Cables Allowed in Tray

CABLES ALLOWED IN TRAY Cable tray is one of the most common methods of supporting wire and cable. There are many different types of cable tray including basket, ladder and solid-bottom. Tray



Cable Tray Technical Guide A practical guide to product selection and

Cable Tray Technical Guide A practical guide to product selection and installation This guide for engineers and installers has been developed by ABB as a practical reference regarding cable tray

CABLE TRAYS GENERAL INFORMATION AND

Cable tray systems are to be installed so they are accessible. If possible 300mm minimum should be left above or between installed systems to allow for cable



Cable tray support and its welding method

This eliminates the need for a large number of personnel, thereby reducing the labor cost and the work flow, and further improving the convenience of the welding work. The cable tray support and the



Types of Cable Trays - Purpose, Advantages,

Cable tray is alternatives to wire ways and electrical conduits, which completely enclose cables. Study types of cable trays, purpose, advantages.



Cable Tray Technical Guide A practical guide to product selection and

In designing supports for a cable tray system, consideration should be given to the loads associated with future cable additions and any additional loading that may be applied to the cable tray system (e.g.,

Contact Us

For datasheets, pricing, or custom high-speed optical interconnect solutions, please visit:

<https://www.syropy.com.pl>