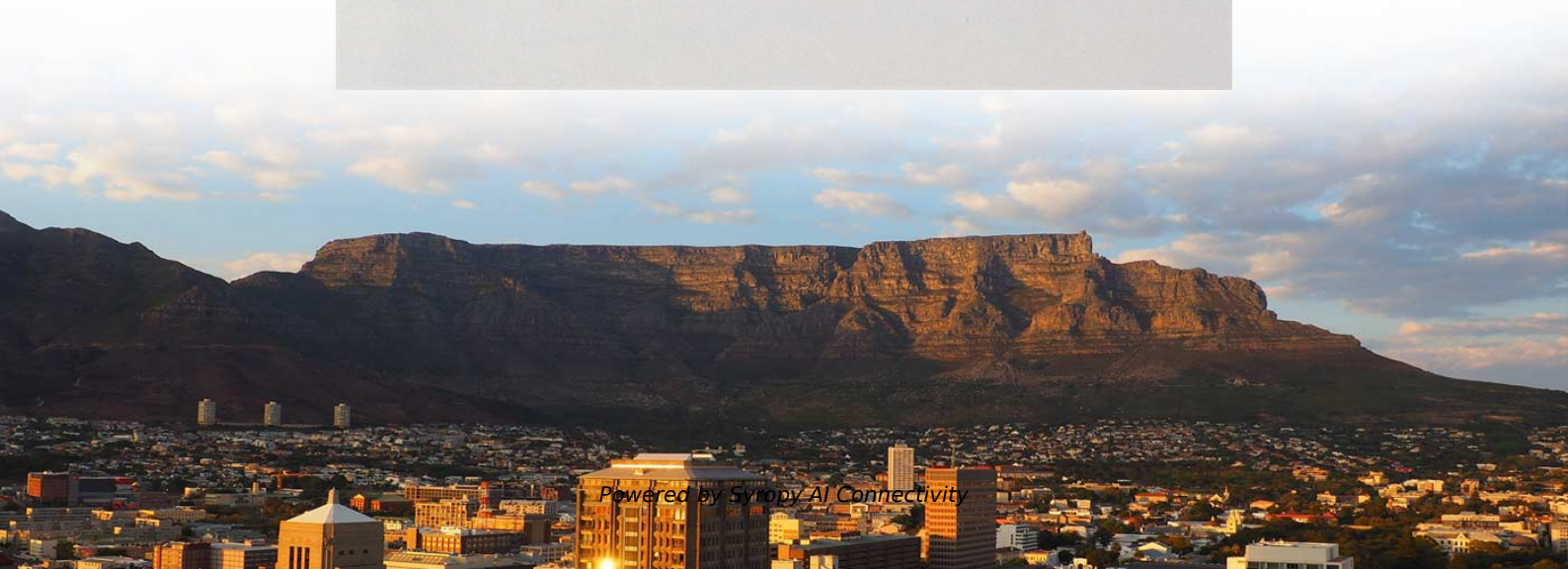


# **Cable tray supports are typically installed every few meters**





## Overview

---

Cable trays and ladders are stored in a horizontal position on a flat surface with timber support placed at an interval of one meter and covered to protect from moisture and direct sunlight. When developing our cable support OBO can offer reliable solutions for systems, three attributes are at the routing and fastening cables securely core of what we do: efficiency, resil- for each of these installation challeng-ience and safety. For proper installation, design, and maintenance, adherence to international standards is essential. en completely installed, without damage either to conductors or structural system use maintain spacing or to keep cables in place when the tray is ect the minimum bend ra-dius for cables as they exit the bottom of the cable tray. A bridge is a structure that provides safe passage for traffic across open spans.



## Cable tray supports are typically installed every few meters

---

### CABLE TRAYS GENERAL INFORMATION AND



Cable tray systems are to be installed so they are accessible. If possible 300mm minimum should be left above or between installed systems to allow for cable

### Method Statement installation of Cable Trays and Ladders

Cable trays and ladders are stored in a horizontal position on a flat surface with timber support placed at an interval of one meter and covered to



### Overview of support systems for cable and equipment

There are six major types of cable supports: cable runway, center-rail systems, cable tray, wire basket, bridle rings or cable hooks, and wireway. Each is designed for



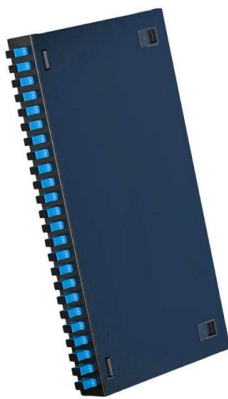
### Cable Tray Spacing Standards for Installation and Safety

Other Cable Tray Spacing Requirements Spacing in Straight Sections For horizontal sections where cable trays are laid out in a straight line, the typical



### **Best Practice Guide to Cable Ladder and Cable Tray Systems**

Cable ladder systems and cable tray systems are designed for use as supports for cables and not as enclosures giving full mechanical protection. They are not intended to be used as ladders, walk ways



### **Cable Tray Ladder Trunking Wire Basket Installation**

Economical support for cable drops and branch cable runs from the backbone cable tray system. Standard widths of 75, 100, and 150 millimeters in metal systems



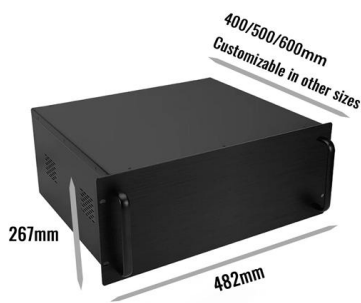
### **White Paper #2402 Comparing Cable Tray and Cable Bus for Power**

Cable tray and cable bus are used to support horizontal runs or vertical runs of cables. Cable bus provides blocks to support cables every 36 in along the horizontal run, and every 18 in along the

### **How to Calculate the Cable Tray Support**



Learn how to accurately calculate cable tray support quantities in electrical installation projects. Our guide covers methods,



### Guide to cable support systems

The mesh cable trays are suitable for the installation of power cables and cables in various areas of application. The grid spacings mean that cables can be inserted and run out in various directions.

### Cable Tray Systems: Requirements and Best Practices

Cable tray systems are structural components used to support insulated conductors and control, instrumentation, and communication cables. They are typically installed overhead, along



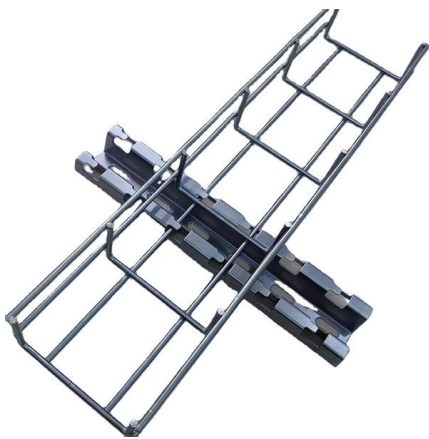
### Cable Tray Installation Guidelines for Engineers

Cable trays shall not be used to support any rigging for cable installation Guidelines for Engineers. Cable clamps or straps suitable for outdoor duty and ultraviolet light shall be provided to limit the movement



## A Guide to Installing and Supporting Electrical Cable Trays

This guide covers the critical steps, from selecting the right electrical cable tray and performing accurate cable fill calculations to managing a safe cable pull through



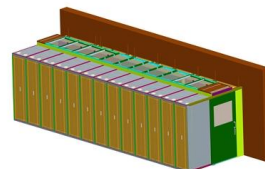
### Understanding NEC Article 392

Master cable support systems with Understanding NEC Article 392: The Infrastructure. Learn safety rules and installation codes for commercial cable trays.



### CABLE TRAY AND ELECTRICAL EQUIPMENT

Touch up painting for every steel surface, edging caused by cutting, drilling, welding and grinding. Touch-up paint of the support according to painting specification



### B-Line series Cable Tray Design Considerations

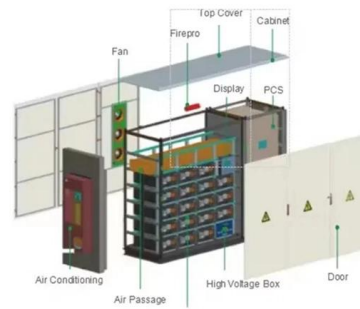
As an industry leader in cable tray, Eaton offers one of the widest ranges of cable management solutions available in the market today with its B-Line series portfolio. With unmatched quality and service, we





## Cable Tray Support Spacing: Key Guidelines Explained

Cable Trays Installation: Cable trays shall be secured to the structure of the building. The cable tray supports shall be designed to support the weight of



## Cable Tray Technical Guide A practical guide to product selection and

Cable tray length is selected based on the load to be supported, the distance between the supports (also referred to as the span), and handling and installation constraints.

## Best practice guide to cable ladder and cable tray

Cable ladder and cable tray systems The following recommendations are intended to be a practical guide to ensure the safe and proper installation of



## Decoding Cable Tray Support Structures: Tips and Insights

Discover efficient cable tray support structures for optimal cable management. Learn about hanger, wall-mounted, and Unistrut systems for safer



## Cable Tray Support Spacing: Key Guidelines Explained

Explore the essential cable tray support spacing requirements for safe and efficient installations. Learn NEC guidelines for perforated, ladder, and wire

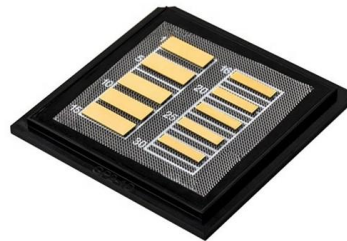


## IEC Standard for Cable Tray: Complete Technical Guide

Trays should be installed with correct support spacing, using compatible accessories. Overloading must be avoided, and all bends or junctions

### Cable tray

In the electrical wiring of buildings, a cable tray system is used to support insulated electrical cables used for power distribution, control, and communication. Cable



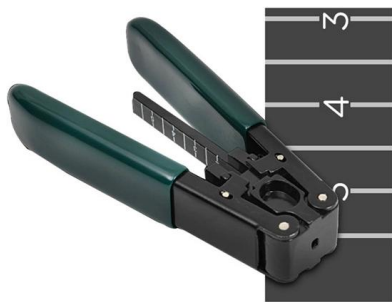
### FAQ , Cable Tray Institute

Question: We have a customer who would like to install the majority of cable tray in his new industrial facility in what I call an "Edge-Wise" orientation. That is, each cable tray rung would point in a vertical



## CABLE TRAY SYSTEMS GUIDE

Some applications may require the cable tray to support the weight of a single, dead object in addition to the cable loads. Specifications typically require this to be applied at the midpoint of the span between



### Best Practice Guide to Cable Ladder and Cable Tray Systems

Cable ladder and cable tray systems are designed to provide continuous support to any cables installed upon them. Due to the fact that cable ladders and cable trays are never really fully enclosed they do

## Contact Us

---

For datasheets, pricing, or custom high-speed optical interconnect solutions, please visit:  
<https://www.syropy.com.pl>