

Cable tray support angle iron fabrication dimensions





Cable tray support angle iron fabrication dimensions

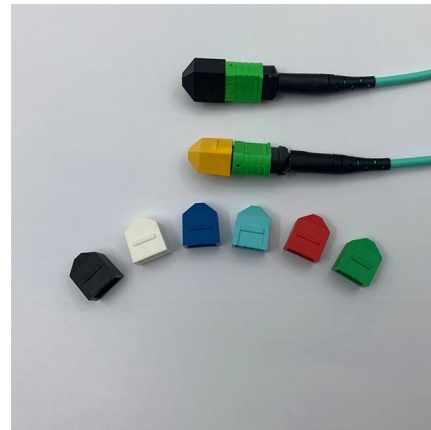


Best Practice Guide to Cable Ladder and Cable Tray Systems

This guide covers cable ladder systems, cable tray systems, channel support systems and associated supports intended for the support and accommodation of cables and possibly other electrical

26 05 36 Cable Trays for Electrical Systems

Install expansion connectors where cable trays cross building expansion joints and in cable tray runs that exceed recommended dimensions. Space connectors and set gaps in accordance with



Technical Specification for Cable tray installation and cable laying work

Technical Specification for Cable tray installation and cable laying work Scope :- This specification covers the following major activities; Fabrication and installation of Mild Steel (MS) support structure

Cable Tray Support: Rod vs. Angle Steel

Learn about the different types of cable tray support, including rod supports and angle steel supports, and how to choose the right one for your



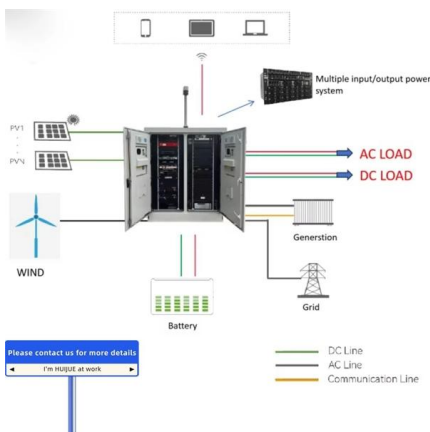
A T & B Cable Tray Metallic cable tray

After the steel cable tray has been manufactured and assembled, the entire tray is immersed in a bath of molten zinc, resulting in a coating of all surfaces, as well as all edges, holes and welds.



Angle Iron Specs: Complete Guide to Steel Angle Dimensions, Sizes

Angle iron -- also called steel angle, angle bar, or L-shaped steel -- is one of the most versatile building materials in structural and fabrication projects. Whether you're building a metal



How to Calculate the Cable Tray Support Quantity

Learn how to accurately calculate cable tray support quantities in electrical installation projects. Our guide covers methods, tools, and practical



Best Practice Guide to Cable Ladder and Cable Tray Systems

Introduction This publication is intended as a practical guide for the proper and safe* installation of cable ladder systems, cable tray systems, channel support systems and associated supports.



Unistrut Cable Tray Support Structures

One of the obvious advantages of fabricating cable tray support structures with Unistrut is that we can easily achieve custom dimensions due to the infinitely

Ethiopia Cable Tray Design Details , PDF

The document contains engineering drawings for: 1) A ladder type cable tray system with general notes specifying materials, finishes, and dimensions. 2) A hold down



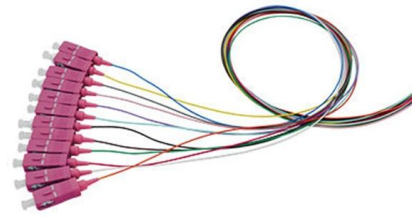
Steel cable tray

The maximum open spacings between cable support surfaces of transverse elements do not exceed 102 mm (4 in.) in the direction parallel to the tray side rails (rung to rung).



Angle Tray - MAK Cable Trays & Fabricators

Angle Tray High strength Angle trays are designed for heavy-duty power distribution in industrial facility, which is fabrication using MS angle and Flats / Strips

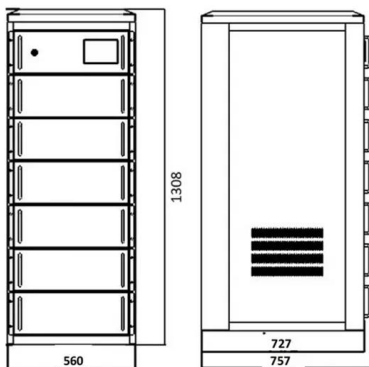


B-Line series Cable Tray Design Considerations

Our wind certification report provides you with list of acceptable B-Line series cable tray supports, fittings and covers based off of the environmental conditions, cable loading, and type of cable tray in your

cable tray system

All fittings are available in sizes and types corresponding to the straight cable tray sections. Elbows - Horizontal and vertical elbows enable directional and elevational changes,



Cable Tray Technical Guide A practical guide to product selection and

SOLID-BOTTOM CABLE TRAY Providing additional cable protection, solid-bottom cable tray is sometimes preferred to support and protect numerous small instrumentation and control cables.



Cable Tray Sleeper Design Details , PDF , Length

The document provides details on the design of a cable tray mechanical support system, including specifications for cable tray sleepers, impeded steel plates, and

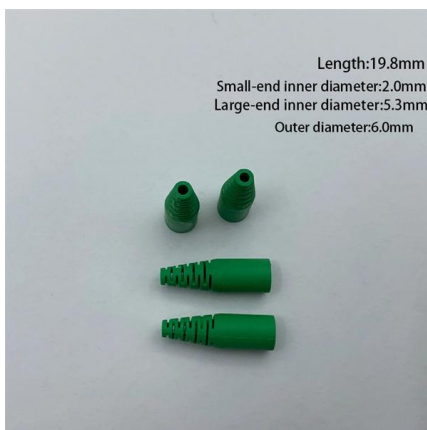


Cable tray manual

Ventilated trough cable tray is often used when the specifier does not want to use ladder cable tray to support small diameter multiconductor control and instrumentation cables.

Technical Specification for Cable tray installation and cable laying work

Scope :- This specification covers the following major activities; - Fabrication and installation of Mild Steel (MS) support structure for Galvanized Iron (GI) Cable tray.



Cable Tray Design and Standards Guide

2. Design and construction requirements specify that cable trays must be ladder or perforated type depending on cable, fabricated from hot rolled steel sheet. Tray



Cable Tray Design and Components Guide

This document provides information about cable trays and accessories, including straight cable trays, perforated trays, returned edge and flange types, and bent



Angle Iron

As a source manufacturer, we offer a full range of custom hot-dip galvanized angle iron, including equal/unequal-legged, perforated, and slotted configurations, meeting the rigid support requirements

Full page photo

7HFKQLFDO 6SHFLILFDWLRQ IRU & DEOH WUD
LQVWDOODWLRQ DQG FDEOH ODLQJ ZRUN



TECHNICAL AND SIZING DATA

The cable ampacity installed in solid tray will be similar to cable installed without spacing in accordance with CEC Rule 12-1210 (3). Solid tray will carry the same type of conductors as ventilated trays.



Ladder Type Cable Tray Drawings

Cable tray & tray support drawings.pdf - Free download as PDF File (.pdf), Text File (.txt) or view presentation slides online. This document contains engineering



CABLE LAddEr TrAY

Cable Support Systems are well designed to provide necessary support for cable trays, cable ladders and trunkings. Cable supports are manufactured according to common standards from high quality

Angle iron AI-LW-30-3000-3-M6 SS

Angle iron with lengthwise/longitudinal slots 7x30mm on one side for universal support. Can be used to support cable trays, cable ladders and electrical



Miscellaneous support

Perforated profiles, angle brackets, magnets, safety hooks, concrete support and cantilever arms.



GUIDE CABLE TRAYS TECHNICAL

In accordance with its continuous improvement policy, Legrand reserves the right to change the specifications and illustrations without notice. All illustrations, descriptions and technical information



Cable Tray Support Systems, Supplier, India

We are Manufacturer, Supplier, Exporter of Cable Trays, Cable Tray Support Systems, Horizontal Bend for Cable Trays, from Pune, Maharashtra, India.

CUTTING GUIDELINE

Introduction Oglænd System manufacture and deliver Multidiscipline modular bolted support systems, cable trays, cable ladders and accessories for complete installation and containment of Instrument,



How to Install Cable Tray: A Comprehensive Guide to Different Cable

Welcome to our step-by-step guide on installing cable trays! In this video, we'll explore the different types of cable trays available and provide detailed instructions for their installation.



Microsoft Word

Cable Trays Support, Fixing Hardware & Accessories shall be supplied as per this drawings. All finished galvanized MS structural members for Cable Tray Support, Fixing Hardware & Accessories shall be



Galvanized Cable Tray Installation Guide

Tray BOQ Ladder - Free download as PDF File (.pdf), Text File (.txt) or read online for free. The document outlines the specifications for the supply, fabrication, and

Guide to cable support systems

The load capacity of the cable trays according to the support width can be read off in the diagram using load curves - here, shown as an example for a cable tray with the tray widths 100 to 600 mm.



Cable Tray Installation Specifications , PDF , Sheet

This document provides installation guidelines for cable trays, including: 1) Cable trays come in perforated and ladder types, with perforated trays made of steel



Guide to cable support systems

The cable support lengths and fittings can basically be designed as cable trays, cable ladders or mesh cable trays, in which cables are routed. Fittings can, on the one hand, be used for horizontal or



Contact Us

For datasheets, pricing, or custom high-speed optical interconnect solutions, please visit:
<https://www.syropy.com.pl>