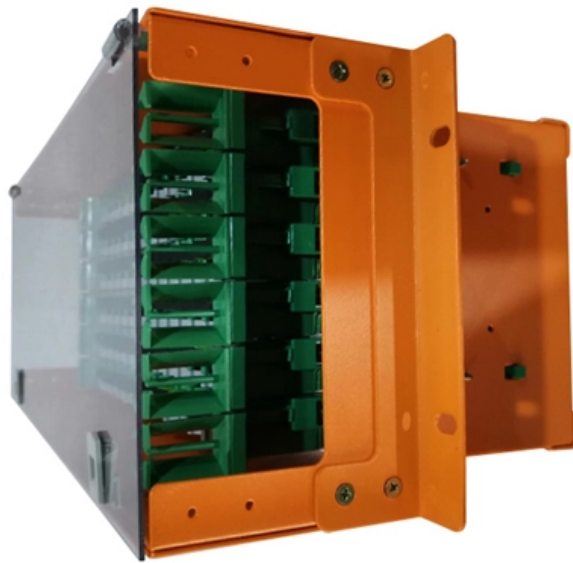


Cable tray quick threading techniques



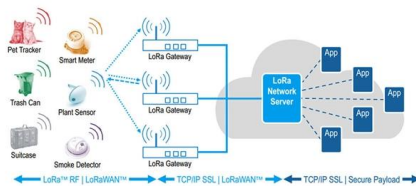


Overview

It is the quickest way to attach tray to support, utilizing a washer support and self threading screw. Corner Splice and Radius Corner Splice are used when tray sections are joined to make a 90 degree horizontal transition. maintain spacing or to keep cables in place when the tray is ect the minimum bend radius for cables as they exit the bottom of the cable tray. A rung spacing of 6 to 9 inches (150 to 230 mm) is preferable when the cable tray cont d for instrumentation and control applications that require. Proper cable installation techniques not only ensure electrical safety but also improve transmission efficiency and extend system lifespan. When developing our cable support OBO can offer reliable solutions for systems, three attributes are at the routing and fastening cables securely core of what we do: efficiency, resil- for each of these installation challeng-ience and safety. These are 3 piece splices that utilize bolt and nut to securely attach and bond tray sections. Hubbell's NEXTFRAME® Ladder Tray is the effective and widely used cable runway that supports and delivers bundles of cable between cabinets, racks, and closets, along walls, and suspended from ceilings.



Cable tray quick threading techniques



Cable Tray Threaded Rod Calculation

#7 "Re: Cable Tray Threaded Rod Calculation" by Codemaster on 08/10/2024 11:04 AM (score 1) 2 Go to Next Good Answer 2

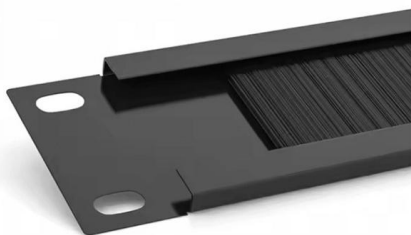
Method Statement installation of Cable Trays and Ladders

This method statement covers the site installation of the cable tray & ladders and the requirements of checks to be carried out.



2pcs Blue Cable Wire Threading Tool Cable Tray Roller

Using the screws, the tray can be installed, Simple and convenient, save your time, much more convenient for leading the wires, with the screw easily



Guide to cable support systems

A cable support system consists of cable support lengths and system components, such as cable support fittings, support elements, mounting elements and system accessories. The cable support



Convenient electrical wire

Convenient electrical wire - threading techniques- Good tools and methods can quickly improve work efficiency



Configuration methods A - Quiklok tray - Conne

Bend side wires on both sides of the tray and reassemble using adjustable clamps to attach side rail edge and universal splices to attach tray bottoms. To form a horizontal cross, proceed in the same



Cable Tray Systems: Requirements and Best Practices

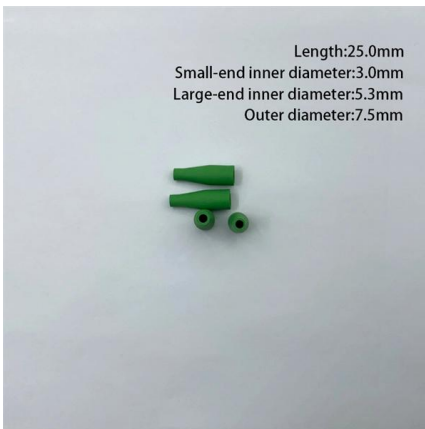
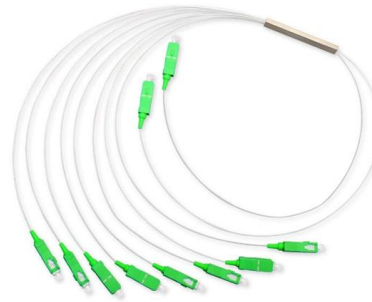
Comprehensive guide to cable tray systems requirements: tray types, materials, loading, supports, bonding, routing, and best practices for safe electrical cable management.





INSTALLATION GUIDE

Center hung tray supports allow for quicker and easier cable installation by allowing cables to be deposited into tray systems from each side. There is a maximum load capacity per hanger of 318 kg

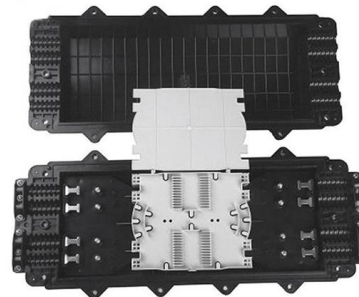


How to thread cables quickly ,, Construction techniques

Route cables through conduits or trays - Follow the designed layout. Adjust tension - Avoid over-tightening or leaving cables too loose. Final inspection - Ensure no cracks, bends, or damage.

The Quickest Cable Tray Installation

We asked our good friends at Jade Electrical, professionals at laying cable tray, to install Cable-MGR and the regular cable tray. The results were amazing.



The Ultimate Guide to Tray Cables: Types, Applications and

When it comes to powering, automating and protecting facilities?from factories and petrochemical plants to data centers and high-rises?the right cable makes all the difference. Among



CABLE TRAY SOLUTIONS

This innovative threaded rod mounting system provides a quick and economical solution for installing cable tray systems supported by threaded rod. The system features a breakthrough "push-install"

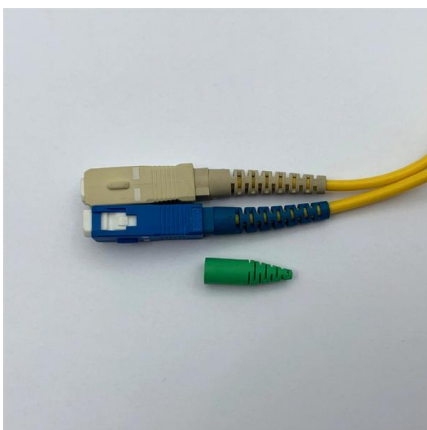


QUICK TRAY PRO

Smooth, round wires minimize dust buildup and cable snagging. T-weld top wire, pre-galvanized steel or black powder finish. Large 2 x 4 in. (51 x 102mm) mesh allows cable to be routed into and out of the

Understanding Cable Tray Grounding: A

Cable tray grounding is an indispensable aspect of electrical installations that plays a pivotal role in ensuring safety, reliability, and efficiency. It



Cable Tray Installation Guidelines , PDF , Galvanization

This document provides details on installing cable trays and their support systems. It includes diagrams showing how to mount cable trays on walls using pre

Types of Cable Trays - Advantages,



Applications and Sizes

Explore the types of cable trays, their advantages, applications, and standard sizes. Learn how they improve cable management and support various industries.

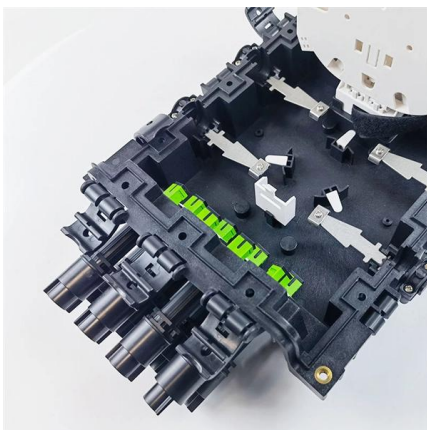


Configuration methods A - Quiklok tray - Conne

M - Large cable drop-out of wire basket tray. The large cable drop-out is ideally suited for use with Category 5 a When attaching the large drop-out to tray siderails, install using the built-in tabs. When

Efficient Cable Tray Installation Methods for Organized

Discover efficient methods for installing cable trays to organize power, data, and security cables. Explore wall, ceiling, and floor mounting options



Installation Guide

Ground Splice is utilized along with the 'NoSplice' line of WBT supports. It is the quickest way to attach tray to support, utilizing a washer support and self threading screw. Corner Splice and Radius Corner



A Guide to Installing and Supporting Electrical Cable Trays

A professional guide to installing electrical cable tray systems per NEC Article 392. Covers support, securing cables, and fill calculations.



Cable Tray Threaded Rod Calculation

Universally in the US trays are hung with 1/2" threaded rod. Anything smaller is tough to work with, tools, handling, storage.



Thread Rod Fixing & Cable Tray Erection , Electrical

This video showcases the essential groundwork of electrical installation during a new factory setup project -- starting with thread rod fixing on ceiling and cable tray



CABLE TRAY SYSTEMS GUIDE

The Ladder Tray features light, rugged, tubular steel construction. It is designed for mechanical support and strain relief in long runs of cable and creates a smooth gradual bend for cable. Rail and stringer



Threading Cables Conduit



Mastery_News_Henan Rayo Cable

It ensures that cables are properly protected and organized, allowing for efficient transmission of electrical signals. In this article, we will provide a detailed explanation of how to

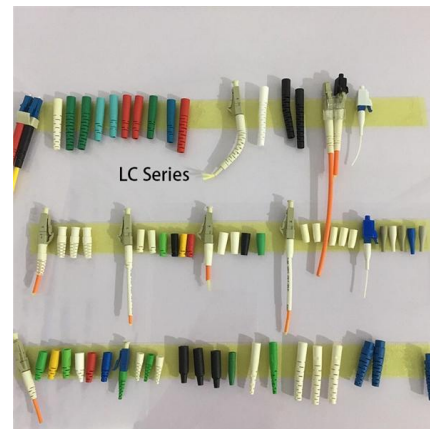


Cable Tray Technical Guide A practical guide to product selection and

In designing supports for a cable tray system, consideration should be given to the loads associated with future cable additions and any additional loading that may be applied to the cable tray system (e.g.,

Cable Tray Technical Guide A practical guide to product selection and

Cable Tray Technical Guide A practical guide to product selection and installation This guide for engineers and installers has been developed by ABB as a practical reference regarding cable tray



Cable Tray Trunking & Ladder Installation Method for

Resources For Electrical & Electronic Engineers Cable Tray Trunking & Ladder Installation Method for Projects The purpose of this article is to define the



Contact Us

For datasheets, pricing, or custom high-speed optical interconnect solutions, please visit:

<https://www.syropy.com.pl>