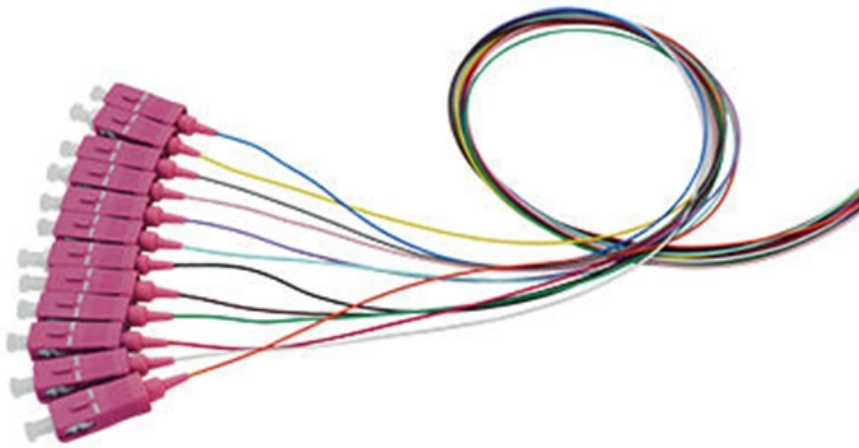


# Cable tray partition ratio





## Overview

---

Calculate required cable tray width per NEC Article 392 using the 50% fill ratio rule. Enter cable ODs and quantities to get minimum tray cross-section area and recommended standard tray width (6", 12", 18", 24", 30", 36") for multi-conductor power and control cable installations. Follow these simple steps: Define Tray Dimensions: Enter the width and depth of your planned cable tray (in mm or inches). Cable tray sizing looks simple on paper, but in real projects it affects cable safety, thermal performance, maintainability, future expansion, and inspection approval. In EPC and industrial automation projects, a tray that is undersized forces last-minute redesigns, cable overcrowding, poor heat. How to calculate cable tray fill ratio?

To calculate the fill ratio, divide the sum of the cross-sectional areas of all cables by the total usable cross-sectional area of the cable tray.



## Cable tray partition ratio

---



### Cable Tray Fill Calculator & Formula Online Calculator Ultra

The Cable Tray Fill Calculator helps in determining the percentage of space occupied by cables within a cable tray, which is essential for ensuring safety, efficient cable management, and



### Cable Tray Capacity Calculator

A Cable Tray Capacity Calculator is a tool for electrical engineers involved in the installation and management of electrical cables.

### Selecting Cable Trays: A Complete Guide for Cable

Selecting cable trays can feel overwhelming, especially with so many options available. But don't worry--I've got you covered.

OEM/ODM  
CUSTOMIZATION AVAILABLE



### Cable Tray Sizing Calculator , IEC 61537 & NEC 392 Guide

Use this cable tray sizing calculator to check fill %, select tray size, and comply with IEC 61537 & NEC 392 with formulas, example and checklist.



### **Cable Tray Size Calculation for Project Engineers**

Cable tray size calculation is important for ensuring safe cable installation, proper heat dissipation, and enough spare capacity for future



### **Cable Tray Partition: Organize and Secure Cables Effectively**

A cable tray partition simplifies cable management, ensuring organized and clutter-free installations in commercial and industrial.



### **Cable tray filling ratios and cable layouts**

MagiCAD allows you to evaluate cable tray filling ratios and plan how cables could be laid on them.





### Cable Tray Fill Rules (NEC 392)

This guide covers the cable tray types and their appropriate applications, the fill rules for each configuration, ampacity derating requirements,



### NEC Cable Tray Sizing Calculator , Calcady(TM)

Calculate required cable tray width per NEC Article 392 using the 50% fill ratio rule. Enter cable ODs and quantities to get minimum tray cross-section area and recommended standard tray width (6",

### Cable Tray Fill Ratio Calculation Guide

Cable Tray Fill Ratio Table - Free download as PDF File (.pdf), Text File (.txt) or read online for free. The document provides a cable fill ratio table for an EZ Tray cable



### Cable Tray Fill Calculator Online

The Cable Tray Fill Calculator is a valuable tool used in electrical engineering and construction to determine the percentage of a cable tray that is

### Cable Tray Fill Calculator



**Cable Cross-Sectional Area:** For round cables, use  $\pi r^2$ , where  $r$  is the cable radius. **Allowable Fill Area:** This varies based on the tray type and local electrical codes.



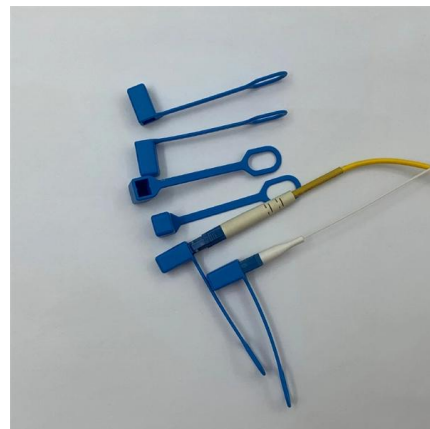
### Code Corner: 2023 NEC Article 690.31 (C) and (C) (2)

In this installment of our Code Corner series, Ryan Mayfield focuses on the 2023 National Electrical Code (NEC) changes concerning cable trays,



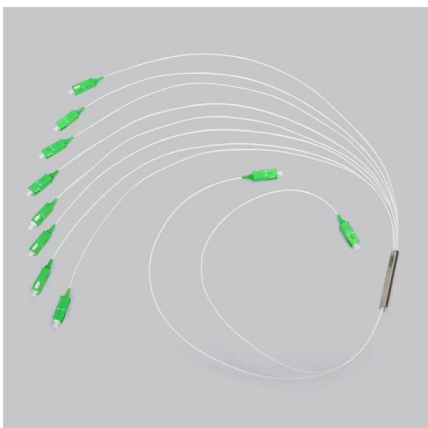
### Cable Tray Technical Guide A practical guide to product selection and

Cable Tray Technical Guide A practical guide to product selection and installation This guide for engineers and installers has been developed by ABB as a practical reference regarding cable tray



### Cable Tray Fill Percentage Calculator

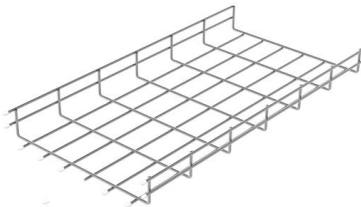
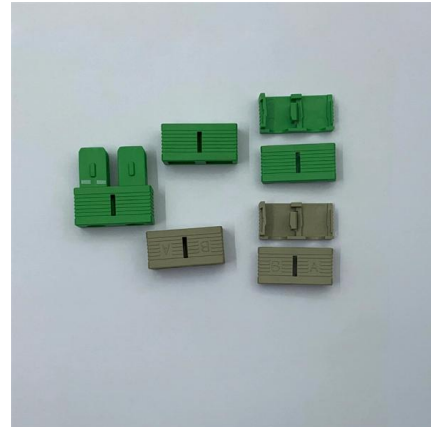
This article provides a detailed guide on cable tray fill percentage calculation, ensuring safe, efficient, and compliant electrical installations.





## Cable Tray Sizing Guidelines , PDF , Electricity

Cable Tray Sizing Calculations - Free download as Word Doc (.doc), PDF File (.pdf), Text File (.txt) or read online for free. This document provides guidelines for sizing

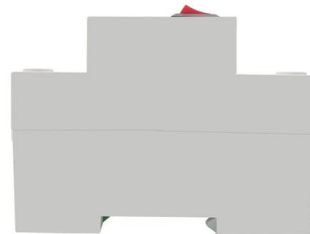


### Annex I

Cable tray sections must be in accordance with the cable types and/or the number of cables installed in it, respecting the maximum filling ratio, according to the cable tray type.

## Cable Tray Raceway Fill and Load Calculations

Wire Mesh Cable Tray Fill Ratio = Cross section of cable / Cross section of tray According to NEC 392.9 (B), when using ventilated tray with multi conductor



## Cable Tray Sizing and Fill Capacity Calculator

Calculate cable tray sizing and fill capacity based on tray dimensions, cable diameter, number of cables, and maximum fill percentage per electrical code.



## Free Cable Tray Fill Calculator , NEC & IEC Compliant Sizing , Shielden

Easily calculate cable tray fill ratios with our free tool. Supports mixed cable sizes, NEC 40% rules, and metric/imperial units. Download your PDF report instantly.



## Cable Tray Size and Dimensions: How to Choose the

Learn how to calculate the perfect cable tray size and dimensions for your electrical project. This guide covers load capacity, fill ratios, and industry

## Flextray load and fill recommendations

The NEC rule requires that the cable cross-sectional areas together may not exceed 50% of the tray area (width x depth = fill). Cables will nearly completely fill the cable tray when reaching the 50%



## Cable tray sizing: width, depth, and fill ratio. · METOSU

Fill ratio is the percentage of the tray's internal cross-sectional area actually occupied by cables. It is the single most important number for long-term performance, and the most frequently



## Cable Tray Capacity Calculator

Calculate cable tray capacity, fill ratio, width, height, or cable diameter from four known values using inches, feet, cm, or meters.



## Free Cable Tray Sizing Calculator -- IEC, AS/NZS, NEC, BS

Calculate cable tray fill ratio, weight loading, and derating factors for multi-standard compliance. This calculator features an interactive interface with advanced visualizations. Open the full calculator for

## Cable Tray Fill Calculator

To calculate the fill ratio, divide the sum of the cross-sectional areas of all cables by the total usable cross-sectional area of the cable tray. Multiply the result by 100 to express it as a percentage.



## Cable Tray Load Calculation and Sizing: Your Easy Guide

Worried about cable tray capacity? Learn simple cable tray load calculation steps. This guide helps you pick the right tray every time, keeping



## Cable Tray Fill Calculator

Easily calculate the fill ratio and load capacity of cable trays with our Cable Tray Fill Calculator. Ensure safety, efficiency, and compliance with industry



## Contact Us

---

For datasheets, pricing, or custom high-speed optical interconnect solutions, please visit:  
<https://www.syropy.com.pl>