

# **Cable tray parallel at 90 degrees**

Length:14.5mm  
Small-end inner diameter:2.0mm  
Large-end inner diameter:3.5mm  
Outer diameter:5.2mm





## Cable tray parallel at 90 degrees

---



### CABLE TRAY SYSTEMS GUIDE

Square Corners: 90 Degree Horizontal Elbows, Horizontal Tees and Horizontal Crosses are available with square corners (0" Radius). The 6" through 18" square-corner fittings are designed to align with

### Paralleled Phase Conductors in Cable Trays Provide Copper Savings

Paralleled Phase Conductors in Cable Trays Provide Copper Savings Cable tray wiring systems have conductor advantages over conduit wiring systems where the installations involve phase conductors



### Cable tray separation , Automation & Control Engineering Forum

We also add that instrument trays cross electrical trays at 90 degrees if the 12 inch rule "gets violated". In general, physical separation of cable trays for redundant safety-class circuits

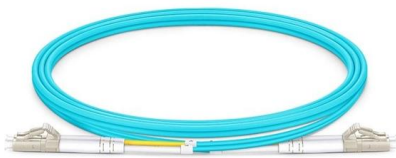
### 90° Cable Tray Bend Installation Guide , PDF

Kable Kontrol Cable Tray 90 Degree Short Bend Instructions - Free download as PDF File (.pdf), Text File (.txt) or read online for free. The document provides



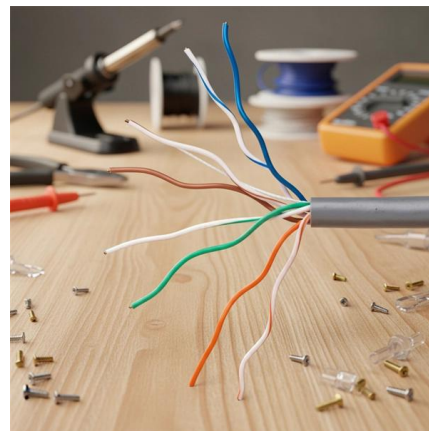
### Cable Tray Design and Components Guide

Tables list standard sizes and specifications for straight and bent cable trays, including width, height, thickness, materials, and finishes. Drawings show



#### How to create a 90° gusset bend (45°x2) cable tray

Now you know that 160mm in 100mm cable tray will be 90°. So you can divide the 160mm by any number you want to get as many bends as you want. Eg. Divide



#### Putting a 90 degree bend into Cable Tray

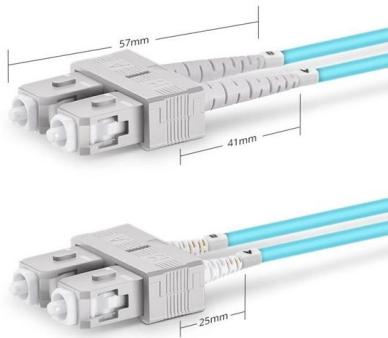
In this clip, David from EzyStrut has a length of EzyTray. He is going to show you how to use EzyStrut's ET/ET3/ET5 Radius plate to create a 90 degree bend in a piece of these cable trays





## Cable Tray Technical Guide A practical guide to product selection and

Cable Tray Technical Guide A practical guide to product selection and installation This guide for engineers and installers has been developed by ABB as a practical reference regarding cable tray



Duplex SC UPC

### Electromagnetic Compatibility (EMC)

To use two separate cable trays for power and data cables. Never put power cables and data cables in the same closed compartment. To use a divider in cable trays

### Document DICOS

To install the cable tray supports, first find the required elevation from the floor to the bottom of the cable tray and establish a level line with a laser or a nylon string.



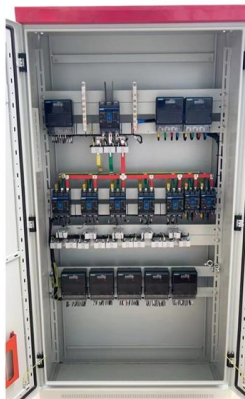
### Master the Cable Tray Secret to Perfect Back of Bend

How to Master back of bend measurements on electrical Cable Tray. Make a 90 electrical cable tray bend to measurement with a gusset of your choice using one piece of tray.



## Document DICOS

A channel cable tray can be added to an existing cable tray system using the method illustrated in Figure 3-89 to add approved cabling systems. Refer to the loading information of the existing cable



## Cable Trays Catalog

90° Radius Bends Wire Mesh Cable Tray L (90 degree) Junction Instructions CABLE TRAY CUTTING & BENDING GUIDES CONFIGURING CABLE TRAYS FOR INSTALLATION 90° Bends Assembled

## How to Make a 90-Degree Bend in Cable Tray , TikTok

Learn how to easily create a 90-degree bend in cable tray with this step-by-step tutorial. Follow along to mark, cut, file, and bend the tray to perfection! #electriciansoftiktok #electrician



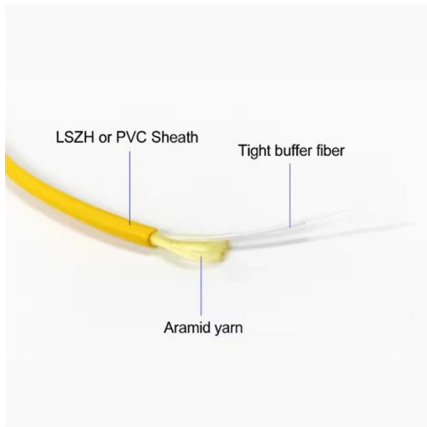
## Cable tray 90 degree bend , cable tray formula , 300mm cable

Cable tray 90 degree bend , cable tray formula , 300mm cable tray 90 bend Queries Solved in This Video:how to make cable tray bend cable tray 45 degree bend cab



## Cable Tray, Metallic Tray System Installation and

Cable trays of power cables and instrumentation cables shall cross at right angles (90 degrees) while maintaining the required separation distances per Table 3 & 4



## Cable Tray Spacing Standards for Installation and Safety

When installing two cable trays in parallel at the same height, the distance between them should be no less than 0.6 meters. This spacing is crucial

## Drawing cabletrays in Revit at 90° to a wall

Drawing cabletrays in Revit at 90° to a wall ryan lenihan 154 subscribers [Subscribe](#)



## 90 Degrees Bends in Cable Tray

In this video they are producing 90 degrees bend in steel cable tray. The learners fabricate (make) flat, internal and external 90 degree bend in steel (metal) cable tray.



## CABLE TRAY SYSTEMS GUIDE

Hubbell's NEXTFRAME® Ladder Tray is the effective and widely used cable runway that supports and delivers bundles of cable between cabinets, racks, and closets, along walls, and suspended from



### How to Bend Cable Tray Students trading aid on how best to put an

Includes a full demonstration on how bend steel cable tray using a bending machine. This is a step by set guide on how to make (fabricate) a 90 degree bend in metal cable tray and use

### How to make a 0-90° vertical angle for cable trays?

Elbow joint RVS is pushed inside the cable tray and attached with the included screw set. Elbow joint RVS can be used to change a cable tray's horizontal orientation



### Cable Tray Support Spacing: Key Guidelines Explained

Explore the essential cable tray support spacing requirements for safe and efficient installations. Learn NEC guidelines for perforated, ladder, and wire



## Contact Us

---

For datasheets, pricing, or custom high-speed optical interconnect solutions,  
please visit:

<https://www.syropy.com.pl>