

Cable tray movement 90 degrees



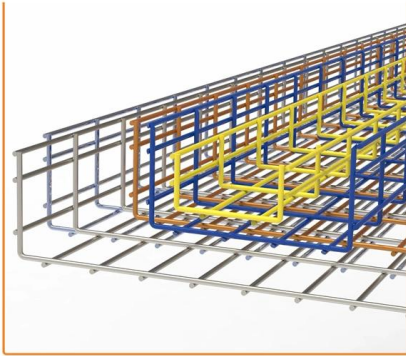


Overview

A ladder type cable tray vertical inside bend is a fitting used to redirect cables vertically downward within a ladder cable tray system, typically at a 90-degree angle. This video explains which type of cable tray section is best for creating a 90 degree turn while paralleling a platform. Creating a 90-degree elbow in an electrical cable tray, often called a "fabricated" or "mitered" bend, involves cutting, bending, and fastening a straight section of tray.



Cable tray movement 90 degrees

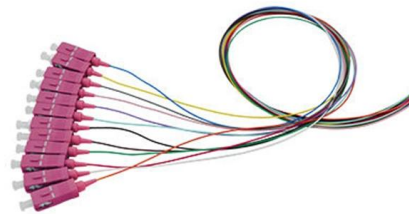


How to fabricate a swept 90 degree bend in cable tray

How to fabricate a swept 90 degree bend in cable tray pyrosym 1.38K subscribers [Subscribe](#)

How to Make a Rolling 90 in Tray

Here's how to create a seamless rolling 90-degree bend in cable tray! ? This guide walks you through each step, from marking and cutting to forming and joining.



Putting a 90 degree bend into Cable Tray

In this clip, David from EzyStrut has a length of EzyTray. He is going to show you how to use EzyStrut's ET/ET3/ET5 Radius plate to create a 90 degree bend in a piece of these cable trays

90° Cable Tray Bend Installation Guide , PDF

Kable Kontrol Cable Tray 90 Degree Short Bend Instructions - Free download as PDF File (.pdf), Text File (.txt) or read online for free. The document provides



How to Bend Cable Tray Students trading aid on how best to

How to Bend Cable Tray Students trading aid on how best to put an internal 90 degrees bend in steel cable tray. Includes a full demonstration on how bend steel cable tray using a bending machine and how to use a crimping to.



90 Degree Stainless Steel Ladder Cable Tray Bend , NEMA 20C

Buy 90 degree ladder cable tray bends made from SS316, meeting NEMA 20C standards. Ideal for industrial and commercial cable management. 300mm wide.



electrical #cable tray# making 90,° elbow

Creating a 90-degree elbow in an electrical cable tray, often called a "fabricated" or "mitered" bend, involves cutting, bending, and fastening a straight section of tray. The most common





90 Degrees Bends in Cable Tray

In this video they are producing 90 degrees bend in steel cable tray. The learners fabricate (make) flat, internal and external 90 degree bend in steel (metal) cable tray.

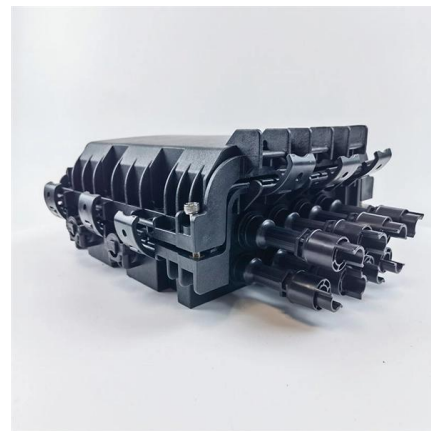


Cable Tray & Trunking 90 Degree Bend Cutting Measurements A to Z? Cable

Cable Tray & Trunking 90 Degree Bend Cutting Measurements A to Z? Cable Tray 90 Degree Bend Formula In this video you can learn how to take correct measureme

Best Practice Guide to Cable Ladder and Cable Tray Systems

This guide covers cable ladder systems, cable tray systems, channel support systems and associated supports intended for the support and accommodation of cables and possibly other electrical



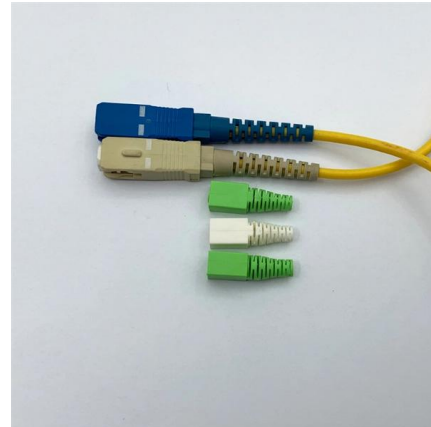
Ladder Type Cable Tray Vertical Inside Bend

A ladder type cable tray vertical inside bend is a fitting used to redirect cables vertically downward within a ladder cable tray system, typically at a 90-degree angle.



How to Bend Cable Tray Students trading aid on how best to put an

Includes a full demonstration on how bend steel cable tray using a bending machine. This is a step by set guide on how to make (fabricate) a 90 degree bend in metal cable tray and use

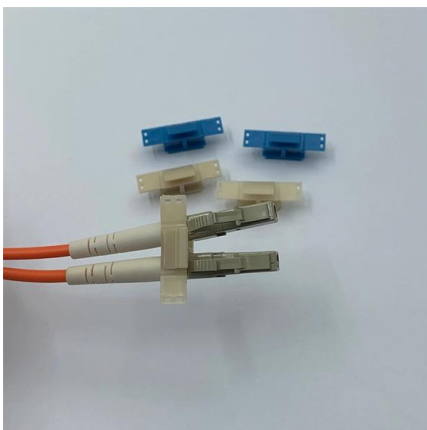
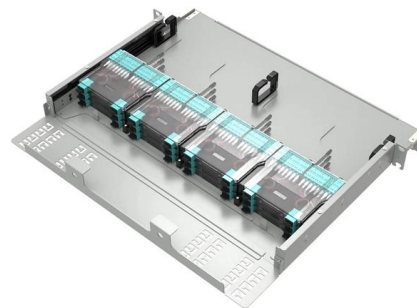


Choosing Cable Tray Sections for 90 Degree Turns

Learn about cable tray configurations. This video explains which type of cable tray section is best for creating a 90 degree turn while paralleling a platform.

Types of Bends in Wire Mesh Cable Trays: A Detailed

Typical Angles: Creates four 90-degree bends, allowing cables to travel straight through or branch in multiple directions. Use Case: Often used in



How to make a 0-90° vertical angle for cable trays?

How to make a 0-90° vertical angle for cable trays? Elbow joint RVS is pushed inside the cable tray and attached with the included screw set. Elbow joint RVS can be



90° Cable Tray Bend Installation Guide , PDF

The document provides instructions for the installation of 90° short radius bends for wire mesh cable trays in various widths (4", 6", and 12"). It lists the required



How to make 90°degree (45°x2) Cable trays/Trunking (100mm X

90° Bend (45° x 2) Formula How to make 90°degree (45°x2) Cable trays/Trunking (100mm X 50mm) Practical tutorial 1



Master the Cable Tray Secret to Perfect Back of Bend

How to Master back of bend measurements on electrical Cable Tray. Make a 90 electrical cable tray bend to measurement with a gusset of your choice using one piece of tray.



How to Make a 90-Degree Bend in Cable Tray , TikTok

Keywords: 90-degree bend cable tray, bending cable tray tutorial, sparkysdirect, snap track cable tray, DIY cable tray, trunking bend, cable bends, galvanised cable tray This information is



90° adjustable bend, vertical, screw connection , OBO

Fittings, cable trays, plug connection - 90° adjustable bend, vertical, screw connection.

Focus creates quality products



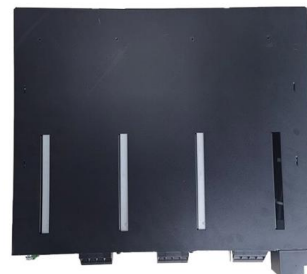
Cable tray 90 degree bend , cable tray formula , 300mm cable

Cable tray 90 degree bend , cable tray formula , 300mm cable tray 90 bend Queries Solved in This Video:how to make cable tray bend cable tray 45 degree bend cab



Cable Trays Catalog

90° Radius Bends Wire Mesh Cable Tray L (90 degree) Junction Instructions CABLE TRAY CUTTING & BENDING GUIDES CONFIGURING CABLE TRAYS FOR INSTALLATION 90° Bends Assembled



ADVANCED S PRODUCTS I ASP 90° Turn Cable Tray

Attach Cable Trays to Cable Tray Supports and connect to other Cable Trays with splice clamps to form continuous system. Adjust height of each Cable Tray Support and correct height if necessary.



Cable Trays Catalog

NL8530012 12" Wide 1 90° Short Radius Bends
200 mm (8") Wide Cable Trays Required
Accessories



How to Bend Cable Tray Students

This is a step by set guide on how to make (fabricate) a 90 degree bend in metal cable tray and use a cable tray bending machine to make the same bend. Videos are training aids for City

Choosing Cable Tray Sections for 90 Degree Turns

Learn about cable tray configurations. This video explains which type of cable tray section is best for creating a 90 degree turn while paralleling a platform. Understand horizontal T sections for



90° Bend Transition Tray

90° Bend Transition Tray This model is a horizontal 90 degree turn bend transition tray. This 90 degree tray offers a 24" bend radius for ease of coax installation. Connects to any ASP cable tray with splice



A "How To" Guide for Cable Carriers & Rotary Motion

Unlocking the Potential of Cable Carriers for Rotary Motion Cable carriers are designed to handle a wide range of rotary motions, from simple movements to



HOW TO BEND 90 DEGREE OF CABLE TRAY BASIC TUTORIAL

In the electrical wiring of buildings, a cable tray system is used to support insulated electrical cables used for power distribution, control, and communication.



How to Bend Cable Tray Students trading aid on how best to

Includes a full demonstration on how bend steel cable tray using a bending machine. This is a step by set guide on how to make (fabricate) a 90 degree bend in metal cable tray and use a cable tray bending machine to



Contact Us

For datasheets, pricing, or custom high-speed optical interconnect solutions, please visit:
<https://www.syropy.com.pl>