

# Cable tray instrument wiring





## Overview

---

The National Electrical Code (NEC), specifically Article 392 (Cable Trays), provides strict rules on cable fill area, maximum cable sizes, and acceptable loading depending on the type of conductor (single or multi) and the type of tray (ladder, ventilated trough, solid). In instrumentation EPC (Engineering, Procurement, and Construction) projects, installing cable trays is very important for making sure that signals are sent reliably, that people are safe, and that systems work well for a long time. Generally instrument cabling is usually run in multicore cables from the control room to the plant area (either below or above the ground) and then from field junction boxes in single pairs to the field measurement or actuating devices. Maintain spacing or to keep cables in place when the tray is ect the minimum bend ra-dius for cables as they exit the bottom of the cable tray. A rung spacing of 6 to 9 inches (150 to 230 mm) is preferable when the cable tray cont d for instrumentation and control applications that require.



## Cable tray instrument wiring

---



### Instrumentation Cable Tray Installation Checklist and

Step-by-step instrumentation cable tray installation guide with safety tips, standards, inspections, and downloadable Excel checklist.

### Instrument Location Layout and cable routing layout -

Maintain cable operating temperatures below rated limits to prevent insulation degradation and fire hazards. Structural Integrity: Determine the required tray

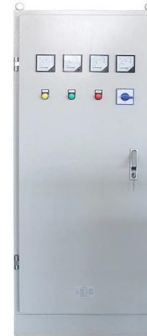


### Tray and Instrumentation Cables

Discover reliable tray and instrumentation cables for industrial use, featuring UV and moisture resistance. Explore various configurations for energy-efficient wiring.

### PROCEDURE FOR INSTRUMENT BRANCH CABLE

PROCEDURE FOR INSTRUMENT BRANCH CABLE TRAY INSTALLATION. All cable trays and supports will be installed as shown on EPC approved design



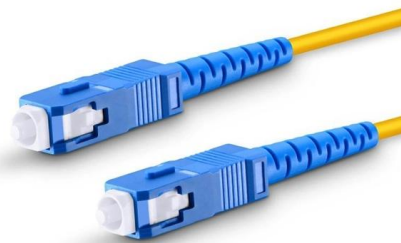
### Instrument Cable Tray Installation Guide

It defines cable trays and explains common tray types. Standards for cable trays, conduits, and cables are outlined. Selection criteria and installation notes for trays



### Instrument Cable Tray Installation Guide

This document provides guidance on installing instrument cables, cable trays, and conduits. It defines cable trays and explains common tray types. Standards for



Length:14.5mm  
Small-end inner diameter:2.0mm  
Large-end inner diameter:3.5mm  
Outer diameter:5.2mm



### Compliance Requirements for Instrument Cable Trays

Installing instrument cable trays properly and in compliance with relevant standards is crucial to ensure safety, functionality, and durability. Below is a detailed guide



### Cable Tray Technical Guide A practical guide to product selection and

SOLID-BOTTOM CABLE TRAY Providing additional cable protection, solid-bottom cable tray is sometimes preferred to support and protect numerous small instrumentation and control cables.



### Tray & Instrumentation Cable , Sycor Technology

Sycor distributes a broad range of Tray and Instrumentation wire and cable and offers value-added services to customize your order.



### Instrumentation Tray Cable (ITC Cable) , Northwire Inc.

Cable and wire solutions that are customizable in virtually endless options to fit your unique application requirements and specifications. Northwire Instrumentation



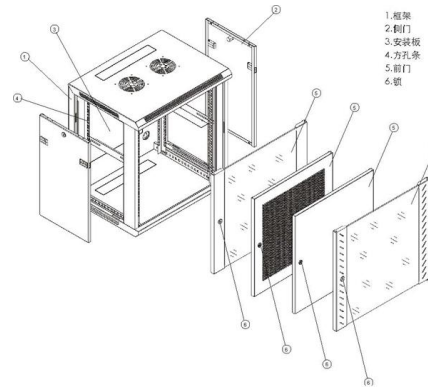
### Complete cable tray manual for electrical engineers and

Complete cable tray manual for electrical engineers and designers (on photo: power cable management ladder tray systems assembled aluminum cable tray ladder



## Cable Tray Technical Guide A practical guide to product selection and

Cable tray is considered to be a system. It must provide continuous support for cables, and the electrical continuity of the cable tray system must be maintained.



### Annex I

This document deals with cables trays, cables and connector installation and segregation, cable trays earthing and E.M.C. directives. These rules shall be applied in the cabling engineering workflow for

### Pro Wire and Cable , By the Foot & In Bulk , Same Day

20 AWG power limited tray cable, 2 individually shielded pairs of copper conductors in black, white and numbered PVC insulation, a 22 AWG orange comm wire, an



### CABLE TRAY SYSTEMS GUIDE

Cable Tray Systems Guide HUBBELL Hubbell Wiring Device-Kellems and Hubbell Premise Wiring are divisions of Hubbell Incorporated, a U.S. headquartered manufacturer with over 130 years of

### Instrument Location Layout and cable routing layout -

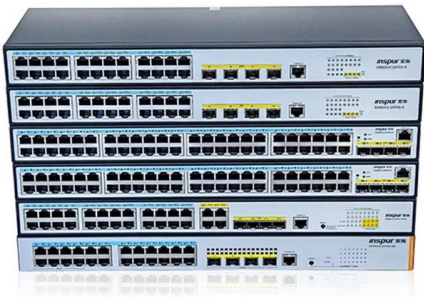


The National Electrical Code (NEC), specifically Article 392 (Cable Trays), provides strict rules on cable fill area, maximum cable sizes, and acceptable loading



### Instrumentation Cable

When it comes to relaying signals between devices, machinery and the control system, there's no margin for error. Given this reality, a robust industrial



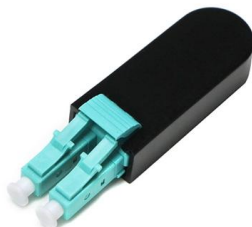
### Instrument Cable Tray / Trench Layout (Part -12I)

Introduction: As part of Construction Engineering, while preparing the instrument cable tray / trench routing as a construction layout the following basic information is required.



### Instrument Tray Layout

Cable Tray wiring systems are more common than conduit wiring systems because they are safer, more reliable, take up less space, and are





## Cable Tray Installation

Whether you're building a commercial setup or upgrading an industrial plant, proper cable tray installation ensures neat wiring, safe access, and easy maintenance. But before you lay the first tray

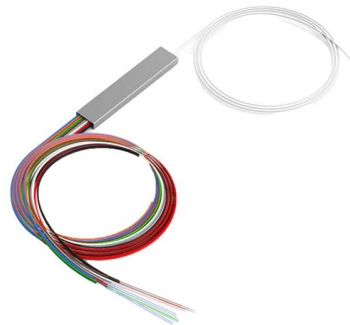


## Efficient Conduit and Cable Laying Techniques in

Laying conduit and cabling in instrumentation and control systems requires careful planning and execution to ensure both efficiency and long-term reliability. These

## Instrument Installation: Cabling Guidelines

Learn more on general guidelines on instrument cable installation; where and how to install cables i.e. cable routing, and cable segregation.



## Contact Us

---

For datasheets, pricing, or custom high-speed optical interconnect solutions, please visit:  
<https://www.syropy.com.pl>