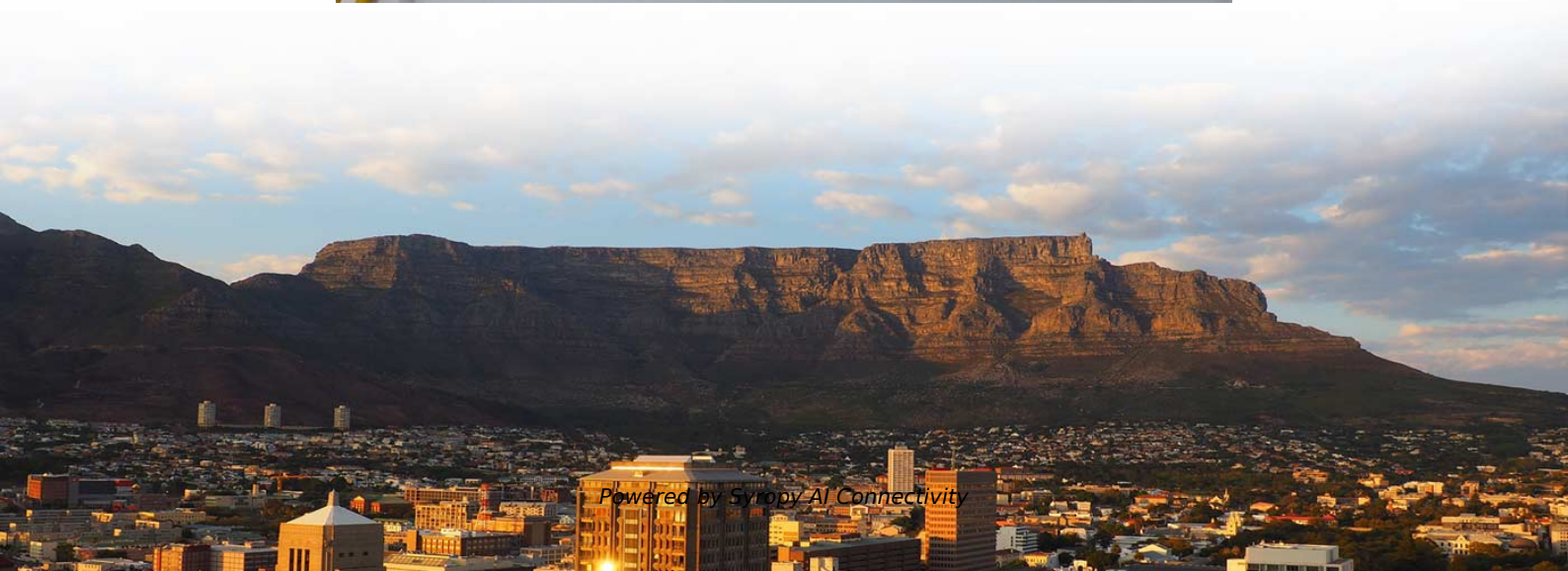


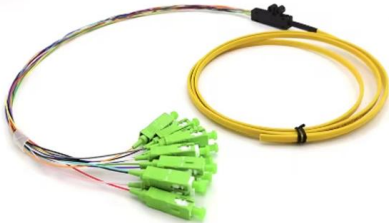
Cable tray hangers are selected using hanger rods





Cable tray hangers are selected using hanger rods

Best Practice Guide to Cable Ladder and Cable Tray Systems



Trapeze hangers (Figures 8) are suitable for use with cable ladder and cable tray, supported by threaded rods hung from ceiling brackets, channel support systems or from beam clamps attached to

Ch. 7 Cable Trays Flashcards , Quizlet

The method of supporting cable trays using threaded rods and hanger clamps is known as _____.



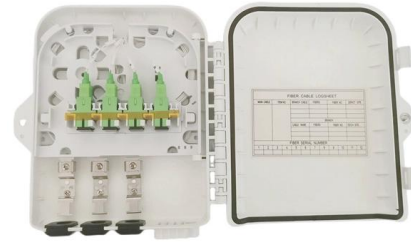
Cable Tray Hanger Bracket & Channel Hangers

Thread top nut onto rod approximately 2.5" then assemble hanger onto the rod and secure with bottom nut. Our Snap Track single hanger brackets & channel



Cable tray Support

A cable tray manufacturer has to provide the cable tray parts data as width, height, weight. Then, according to cable tray support configuration, a structural engineer may calculate the actual



The method of supporting cable trays using threaded rods and hanger

Cutting Rods: Measure and cut threaded rods to the desired lengths to suspend the trays.
Securing to Structure: Attach the rods to the structural ceilings or beams using appropriate anchors.

Best practice guide to cable ladder and cable tray

Cable ladder and cable tray systems The following recommendations are intended to be a practical guide to ensure the safe and proper installation of



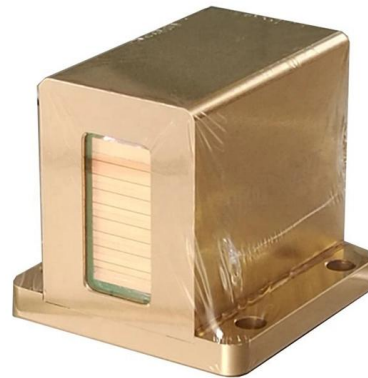
26207 Flashcards

Study with Quizlet and memorize flashcards containing terms like When installing single conductor cables in tray systems with conductors size 4/0 and larger, they must be ____, Welding cable may



The method of supporting cable trays using threaded rods and hanger

The method of supporting cable trays using threaded rods and hanger clasps is known as a trapeze hanging system. In this system, threaded rods are attached to the structure above, and



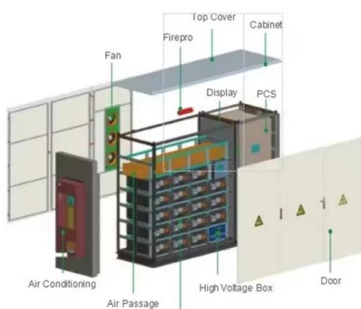
Best Fixing and Mounting Options for Cable Trays , CMW

Regarding cable management, the fixing and mounting you choose for your cable trays can make or break your setup. Whether you're managing voice, data, or electrical cables, ensuring



Cable Tray Hanger Bracket & Channel Hangers

Our Snap Track single hanger brackets & channel hangers are used for overhead or beam mounting when installed with a beam clamp. Contact us!



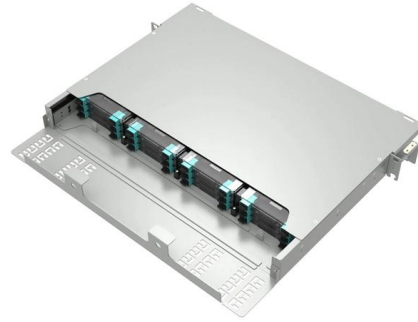
Best Practice Guide to Cable Ladder and Cable Tray Systems

When several levels of cable ladder or cable tray are mounted on the same threaded rods in a multiple level installation, it is important to ensure that the total load on any pair of rods does not exceed the



Which type of cable tray support uses threaded rods and hanger

The type of cable tray support that uses threaded rods and hanger clamps is called the trapeze support. This method involves suspending a tray from two parallel rods, providing stability



Cable Ladder Systems-Supports

Heavy duty trapeze hangers are supplied singly without fasteners, used to support horizontal runs of ladder from overhead structure, use M12 threaded rods. When hanger rod brackets are fitted to

Cable Management Hangers , McMaster-Carr

Choose from our selection of cable management hangers, including routing rings and hooks, hangers for pipe, tube, and conduit, and more. Same and Next Day Delivery.



The method of supporting cable trays using threaded rods and hanger

The method of using threaded rods and hanger clamps to support cable trays is called direct rod suspension. Other methods like wall mounting, pipe rack mounting, or center rail supports



Ultimate Guide to Cable Tray Hanging Systems: Choice and Installation

Get to know how to select and install cable tray hanging systems. This guideline addresses the load capacity, spacing and material finishes to maintain the project safety and stability

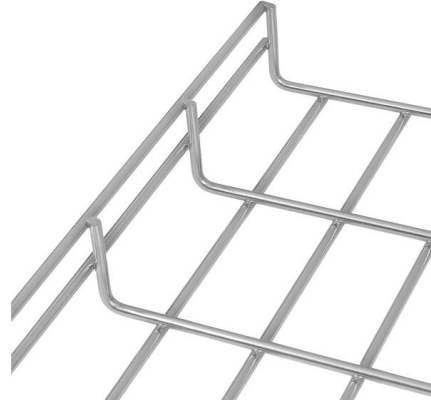


Threaded Rod Hangers cont

Both rod hangers provide attachment points for use in pipe hanging, fire protection, electrical conduit, and cable-tray applications. These anchors are recommended

Solved: What is the method of supporting cable trays using threaded

Cable trays are used to support and route electrical wiring and are often suspended from ceilings or structures. The question describes a method where threaded rods are used as vertical supports,



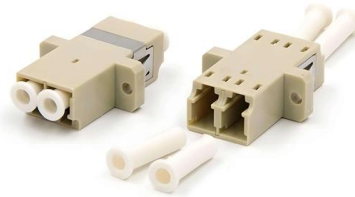
Decoding Cable Tray Support Structures: Tips and Insights

Discover efficient cable tray support structures for optimal cable management. Learn about hanger, wall-mounted, and Unistrut systems for safer



Guide to cable support systems

This chapter deals with the correct dimensioning and the final selection of a cable support system, depending on the application, according to various influencing factors, such as cable volume, cable



Best Practice Guide to Cable Ladder and Cable Tray

Cable ladder and cable tray systems The following recommendations are intended to be a practical guide to ensure the safe and proper installation of

SECTION 26 05 29

Support parallel runs of horizontal raceways together on trapeze-type hangers. Use 3/8-inch diameter or larger threaded steel rods for support. Threaded rod shall be covered by 1/2 inch conduit from bottom



19. The method of supporting cable trays using threaded rods and hanger

19. The method of supporting cable trays using threaded rods and hanger clamps is known as. 1.) wall mounting 2.) Direct Rod suspension 3.) Pipe rack mounting 4.) Center rail support Show More Get



Cable tray Support

Then, according to cable tray support configuration, a structural engineer may calculate the actual load on each support rod and according to rod material: steel, fiberglass or else to state the



2. Imported design is convenient for expansion.
The design of two inlets saves space and allows for rear line entry.

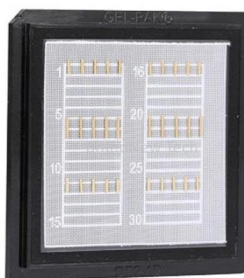
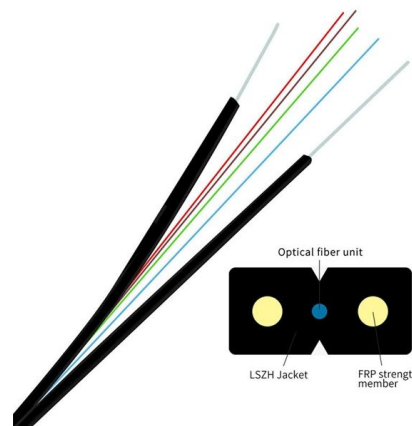


Cable Tray Threaded Rod Calculation

Universally in the US trays are hung with 1/2" threaded rod. Anything smaller is tough to work with, tools, handling, storage.

Cable Tray Technical Guide A practical guide to product selection and

Cable tray length is selected based on the load to be supported, the distance between the supports (also referred to as the span), and handling and installation constraints.



the method of supporting cable trays using threaded rods and hanger

Explanation The method of supporting cable trays using threaded rods and hanger clamps is known as "trapeze mounting". In this method, two or more rods are used to suspend the tray. These rods are



HANGERS & BRACKETS Lengths Cable Ladder

The loading table below gives the recommended maximum load for each size of tray overhead hanger when used with Vantrunk cable tray and with a uniformly distributed load (UDL) onto the tray



Contact Us

For datasheets, pricing, or custom high-speed optical interconnect solutions, please visit:
<https://www.syropy.com.pl>