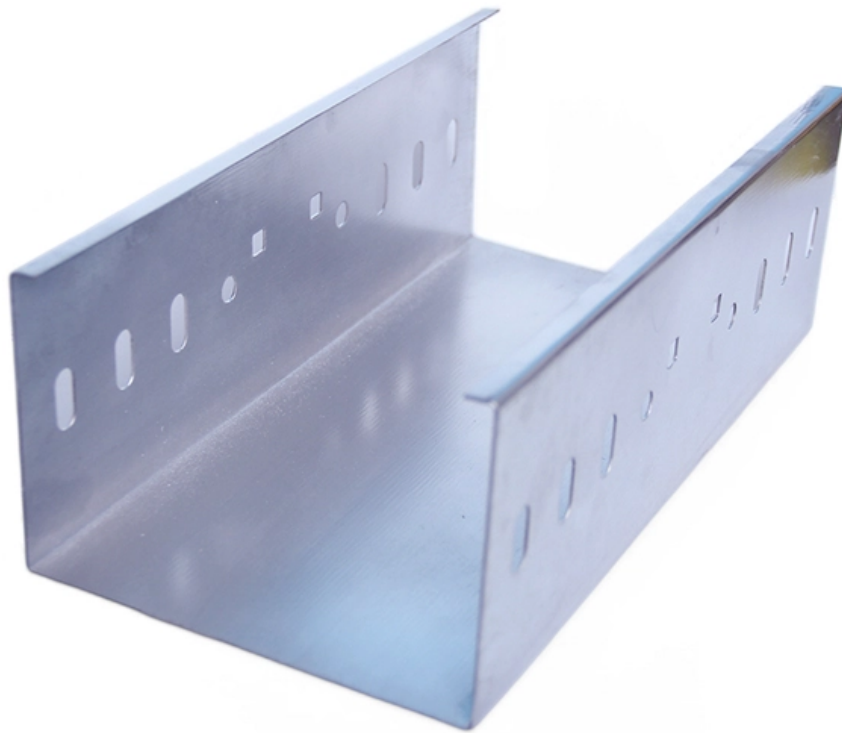


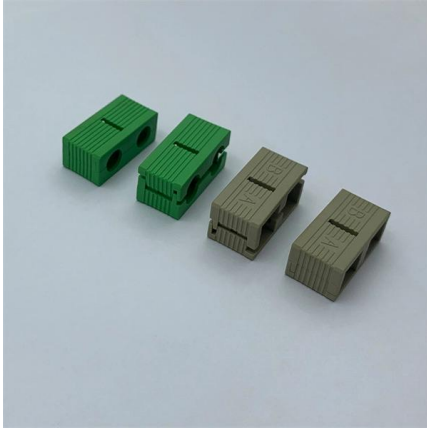
# **Cable tray flat iron grounding sample**





## Cable tray flat iron grounding sample

---



### Equipment Grounding Conductors for Cable Tray Systems

Cable tray have excellent safety and dependability records, because of the result of cable tray's unique features plus the proper design and installation.



### Practices for Grounding and Bonding of Cable Trays

All metallic cable trays shall be grounded as required in Article 250.96 regardless of whether or not the cable tray is being used as an equipment grounding conductor

### Cable Grounding Methods , Prysmian

One of the simplest methods used for grounding the cable screen or armor is single-point grounding. In this method, the cables are grounded at only one point along



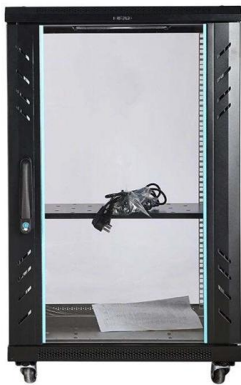
### Practices for grounding and bonding of cable trays

All metallic cable trays shall be grounded as required in Article 250.96 regardless of whether or not the cable tray is being used as an equipment



### Equipment Grounding Conductors for Cable Tray Systems

Electrically paralleling the single conductor EGC with the Cable Tray by bonding the single conductor EGC to the cable tray every 50 to 100 feet produces an installation that may provide some degree of



### Grounding Inspection of Steel and Aluminum Cable Tray Systems

Steel and aluminum cable tray systems are excellent equipment grounding conductors if they are properly designed, specified, installed, and inspected. The NEC requirements for cable tray



### Cable tray manual

These documents: ANSI/NEMA VE-1, Metal Cable Tray Systems; NEMA VE-2, Cable Tray Installation Guidelines; and NEMA FG-1, Non Metallic Cable Tray Systems, are an excellent industry resource in





## CableTray Book English db

Total cross-sectional area of both side rails for ladder or trough-type cable trays: or the minimum cross-sectional area of metal in channel-type cable trays or cable trays of one-piece construction.



## Cable Tray Installation Rules (NEC 392) - Electrical Trader

Core rules for selecting, installing, grounding, and filling cable trays--clearances, materials, separation, and bonding explained.

## Equipment Grounding Conductors for Cable Tray Systems

Equipment Grounding Conductors for Cable Tray Systems Cable tray wiring systems have excellent safety and dependability records. These excellent records are the result of cable tray's unique



## NEC Standards for Cable Trays: Grounding, Fill Capacity

This article provides a comprehensive framework that governs various aspects of cable tray installations, including the types of cables that are deemed acceptable for use, requirements for



## CableTray Book English db

For more information on grounding and bonding cable tray, refer to NEMA VE 2 cable tray installation guidelines.



### Cable Tray Grounding: Power, Instrumentation, and Telecommunications

Where cable tray systems contain only signal and communication circuits that operate at low energy levels, power grounding per NEC Section 318-7 is not appropriate, but cable tray grounding for

### Understanding Cable Tray Grounding: A

This comprehensive guide delves into the complexities of cable tray grounding, offering in-depth insights into its importance, principles, design



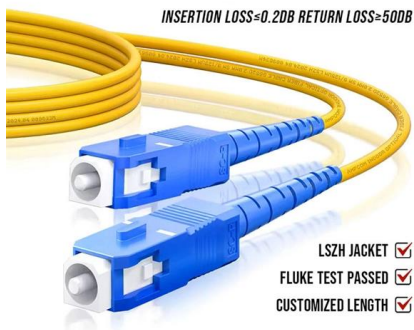
### Cable Tray Grounding: Power, Instrumentation, and

The purpose of power grounding (Article 250) is to minimize the damage from wiring or equipment ground fault. Cable tray systems are in the path of ground fault currents. Cable tray systems are



## B-Line series Cable Tray Design Considerations

As an industry leader in cable tray, Eaton offers one of the widest ranges of cable management solutions available in the market today with its B-Line series portfolio. With unmatched quality and service, we

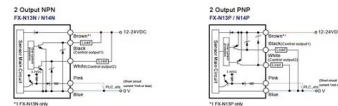


## How to Properly Ground and Bond Structured Cabling Systems, CMW

The correct way to ground and bond a cabling system is to ensure all conductive components, such as cable trays, patch panels, racks, and metallic enclosures, are electrically

## Cable Tray Systems: Requirements and Best Practices

Comprehensive guide to cable tray systems requirements: tray types, materials, loading, supports, bonding, routing, and best practices for safe electrical cable management.



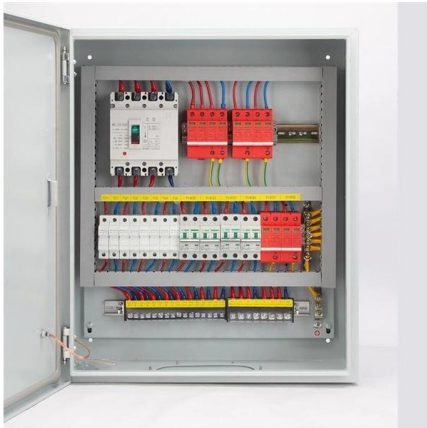
## Practices For Grounding And Bonding Of Cable Trays

LCC cable tray conduit clamps are designed for mounting on cable tray side rails, providing a secure method for clamping metal conduits and



## Insufficient Cable Tray Grounding: Hazards, Inspections,

Discover the dangers of insufficient cable tray grounding, from equipment damage to fire risks, and explore effective inspection practices to



### Cable Tray Grounding FAQ

Construction projects using cable tray often need hundreds or thousands of clamps to connect grounding jumpers between tray-sections, or to connect each tray section to a continuous ground

### Grounding cable trays: requirements, norms, instructions

How to ground cable trays and what requirements should be considered? Which wire do you need to use to ground the cable management tray.



### Grounding and Bonding of Cable Trays

If a wire mesh cable tray is supporting cable with a built-in equipment grounding conductor or control or signal cables, then the tray should have a low impedance



## GUIDE CABLE TRAYS TECHNICAL

NEMA VE 1-2017 Specifies requirements for metal cable trays and associated fittings designed for use in accordance with the rules of Canadian Electrical Code, Part I and the National Electrical Code®



## Contact Us

---

For datasheets, pricing, or custom high-speed optical interconnect solutions, please visit:  
<https://www.syropy.com.pl>