

Cable tray fire pipe construction





Overview

Cable trays and busways at floor level or at slab penetrations shall have a waterstop no less than 50 mm in height. At slab penetrations, provide 20-30 mm of firestopping and install a fire-support plate at the top. Cable tray installation must comply with specific technical standards to ensure electrical safety, system reliability, and long-term maintainability. This document outlines the key requirements for cable tray layout, installation, and fireproofing in industrial and commercial environments. The following charts give the number of 3M pillows needed to completely firestop an opening that cable tray passes through. UL Listed Systems Concrete Wall - C-AJ-4056 3 HR F-Rating, 3/4 HR T-Rating Gypsum.



Cable tray fire pipe construction



Guide to Fire-blocking Sections (Fire Sections/Fire

In the power industry, the installation of fire-blocking sections (fire-proof sections/fire-proof partitions) on cable trays is an important measure to

What Obstruction Rules Apply to Cable Tray?

However, the cable tray may be centered directly below some sprinklers, but off to the side for other sprinklers. What obstruction criteria from NFPA 13 (2016 Edition) would apply?



Fire Safety Considerations for Cable Trays: Protecting

Learn about essential fire safety measures for cable trays to safeguard your electrical infrastructure. Discover expert guidance and solutions

Understand the Importance of Cable Tray Fire Stopping

Discover the significance of cable tray fire stopping for building safety. Learn how it prevents fire spread, safeguards occupants, and ensures compliance with fire



Cable Trays and Fire Protection Systems: Keeping

Learn how Cable Trays and Fire Protection Systems work together. They protect cables and help fire alarms, sprinklers, and emergency systems



LAF Group , Fire Stopping System for Cables and Cable Trays

Trimesh®-Vermitek®-Vermiduct® is an injectable mortar-based fire stopping system that provides unprecedented levels of fire stopping power up to 4-hour fire resistance level, in compliance with



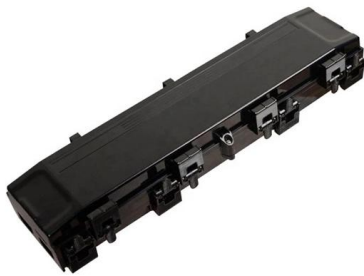
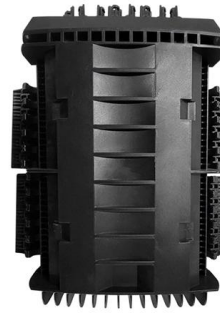
Technical Guidelines for Cable Tray Installation and

Cable tray installation must comply with specific technical standards to ensure electrical safety, system reliability, and long-term maintainability. This document



How to effectively fire seal pipe and cable penetrations

Fire and smoke should not be able to pass through these pipe and cable penetrations. These kind of penetrations must be sealed in an approved way;



Firestopping Requirements for Cable Trays and

Technical guide to firestopping cable tray and slab penetrations in electrical shafts; specifies materials, packing limits, waterstop heights and

Fire Protection of Cable Trays , Ceasefire PFP

Proper fire protection for cable trays is crucial for maintaining building safety. Find out more with our passive fire protection services.



Fire Resistant FRP Cable Tray Aluminum Alloy Lightweight Cable Tray

We have developed and manufactured more than 10,000 models of products, including cable brackets, cable trays, embedded channels, embedded steel plates, FRC lightweight evacuation platforms,

Cable Tray Systems Market



Key focus areas include modular tray systems, fire-rated products, green construction alignment, and smart tray innovations. The Cable Tray Systems Market Market Research Report



How to effectively fire seal pipe and cable penetrations

Type of pipe material External diameter of the pipe Wall thickness of the pipe Type of construction; wall or floor Thickness of the construction Size and shape of the



UL 1257 - Fire Resistance of Cable Tray and Conduit Assemblies

The fire-resistant cable tray and conduit assemblies play a critical role in maintaining safe and compliant industrial operations, particularly within hazardous locations such as chemical plants, oil refineries,



Fire stop section of the cable tray and cable management NEMA

3MTM+ Fire Barrier CS-195+ Composite Sheets Features & Benefits Ideal for fire-stopping blank openings and through-penetrations of multiple cable, pipe ducts, buss ducts and cable trays





Fire stop section of the cable tray and cable management NEMA

3M Fire Barrier Moldable Putty+ is a one-part, halogen-free product designed to firestop electrical outlet boxes and a wide variety of through-penetrations including cable, conduit, insulated pipe and metal



Cable transit frames and penetration sealing systems

Seal cable penetrations with our modular firestop solutions, designed to create water-, smoke- and gas-tight barriers in energy and industry projects both onshore and offshore.

CABLE TRAY PENETRATION THROUGH FIRE RATED WALL

BAGS SHALL BE: GRACE CONSTRUCTION PRODUCTS KBS SEALBAGS OR 3M FIRE BARRIER PILLOWS. INSTALL BAGS PER MANUFACTURERS INSTRUCTIONS TO ACHIEVE UL



Promat Fire Stopping Handbook

Fire stopping coatings for cables, cable bundles and joints e at in the time of printing. The user should strictly follow the instructions written on the products or their packaging and in the EC safety data



Promat Fire Stopping Handbook

Part 3: Classification using data from fire resistance tests on products and elements used in building service installations: fire resisting ducts and fire dampers. Part 4: Classification using data from fire



Fire behaviour and construction safety precautions for

Cable tray type, ducts and conduits Although the type of cable and conductor is the determining factor in the fire behaviour of ducts and conduits, the

What Obstruction Rules Apply to Cable Tray?

The cable tray is less than 18-inches below the sprinkler. However, the cable tray may be centered directly below some sprinklers, but off to the side for other sprinklers.



Technical Guidelines for Cable Tray Installation and

Install fire barriers within the tray to isolate different fire zones. When cable trays pass through walls or floors, seal openings using fire-rated penetration sealing



Firestopping cable runs

4) Use intumescent wrap materials to firestop cable trays. They are pliable at room temperature, but swell and harden to fill the opening when they are exposed to



How Does Fire Protection for Cable Trays Contribute to

Learn how fire protection for cable trays enhances industrial safety by preventing fire hazards in critical areas and protecting infrastructure.

Fire rated wall , If

The sealed penetration should have the same fire rating as the surrounding construction and must take into account, amongst other parameters, the cable diameter as well as the thickness of the wall.



Cable Tray Systems: Requirements and Best Practices

Comprehensive guide to cable tray systems requirements: tray types, materials, loading, supports, bonding, routing, and best practices for safe electrical cable management.



Fireproof installations above fire protection ceilings

It was introduced into the valid construction law of the German federal states as the technical construction regulation. According to the MLAR guideline, in the area of emergency and escape



Contact Us

For datasheets, pricing, or custom high-speed optical interconnect solutions, please visit:
<https://www.syropy.com.pl>