

# **Cable tray fabrication positioning and drilling**





## Overview

---

- The steps for installing cable trays, which include marking, cutting, drilling holes, installing supports, and fixing fittings and accessories. The Cable Tray ng standards, performance standards, test standards and application in this document have been tested extens ompetent professional en completely installed, without damage either to conductors or. This publication is intended as a practical guide for the proper and safe\* installation of cable ladder systems, cable tray systems, channel support systems and associated supports. With our many years of experience, we are one of the leading manufacturers in this field.



## Cable tray fabrication positioning and drilling



### Best Practice Guide to Cable Ladder and Cable Tray Systems

This guide covers cable ladder systems, cable tray systems, channel support systems and associated supports intended for the support and accommodation of cables and possibly other electrical

### Method Statement for the Installation of Cable Tray, Trunking, and

Separate grounding cable for cable tray, ladders, trunking shall be provided and connected to earth bar. Burs and sharp edges shall be removed prior the installation of the tray, trunking, ladder and

### STAINLESS STEEL WIRE MESH

Long-lasting and durable

Comprehensive specifications

Customized non-standard products



### How Does Cable Tray Installation Work?

Explore Harbor Energy Solutions' guide on cable tray installation, detailing benefits, considerations, and step-by-step processes.



### Cable Tray Installation 211215 , PPTX

The document provides information about cable tray systems, including: - The six main types of cable trays: ladder, solid bottom, trough, channel, wire mesh, and



### How to Install Cable Tray: A Comprehensive Guide to Different Cable

Welcome to our step-by-step guide on installing cable trays! In this video, we'll explore the different types of cable trays available and provide detailed instructions for their installation.

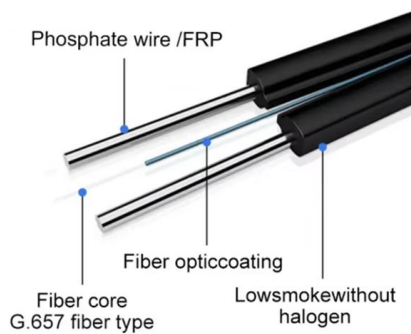


### Cable Tray Technical Guide A practical guide to product selection and

Cable Tray Technical Guide A practical guide to product selection and installation This guide for engineers and installers has been developed by ABB as a practical reference regarding cable tray



Equipped with a removable **Mounting Plate** inside the enclosure, enabling customized drilling and secure component mounting.



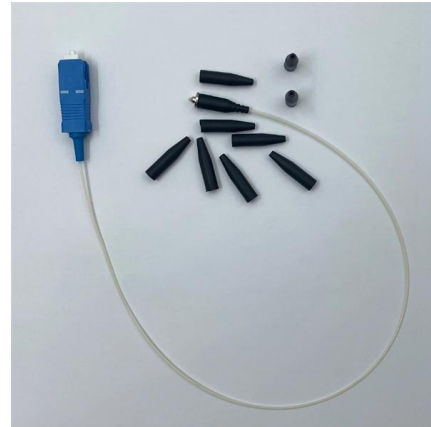
### Best Practices for Installing Cables in Trays

Learn the best practices for installing cables in trays. This guide covers essential steps, technical requirements, and key details



## Cable tray manual

These documents: ANSI/NEMA VE-1, Metal Cable Tray Systems; NEMA VE-2, Cable Tray Installation Guidelines; and NEMA FG-1, Non Metallic Cable Tray Systems, are an excellent industry resource in



## Cable Tray Installation 211215 , PPTX

- The materials cable trays can be made from, including steel, aluminum, and fiber reinforced plastic. - The steps for installing cable trays, which include marking,

## Technical Specification for Cable tray installation and cable laying work

Approval of IPR shall be obtained for site preparation and marking the cable tray routes and locations of cable tray support before proceeding with the erection and installation work.



## Cable Tray Installation Procedure Guide

CABLE TRAY INSTALLATION PROCEDURE - Free download as Word Doc (.doc / .docx), PDF File (.pdf), Text File (.txt) or read online for free. This document



## CABLE TRAY INSTITUTE

The Cable Tray Institute (CTI) was founded in 1991 to support the cable tray industry by engaging in research, development, education, and the dissemination of



### Comprehensive Guide to Cable Tray Fabrication and

This guide will discuss the process of cable tray fabrication and installation, and further highlight the considerations of using a GI cable tray for various applications.

### CABLE TRAY INSTALLATION PROCEDURE

Cable trays shall be provided with covers where there is high risk of mechanical damage during normal operation or maintenance periods. Cover fabrication shall



### Guide to cable support systems

Universal systems for cable support structures are used for small loads. The systems are suspended from the ceiling with threaded rods, stand-off brackets allow raised floor mounting of cable trays,



## CABLE TRAY SYSTEMS GUIDE

Cable Tray Systems Guide HUBBELL Hubbell Wiring Device-Kellems and Hubbell Premise Wiring are divisions of Hubbell Incorporated, a U.S. headquartered manufacturer with over 130 years of



### Technical Specification for Cable tray installation and cable laying work

All the necessary equipment, tools & tackles, welding machines, drill machine, cutting machine etc. for the fabrication and installation of MS section, and cable tray have to be arranged by the contractor, 4.

### Method Statement for Installation of Cable Tray or Trunking

Provide sufficient space around cable tray for access. Cable Support System Use fish plate to joint & align cable tray where cable tray passes through



### Method Statement installation of Cable Trays and Ladders

This method statement covers the site installation of the cable tray & ladders and the requirements of checks to be carried out.





## Complete cable tray manual for electrical engineers and

Complete cable tray manual for electrical engineers and designers (on photo: power cable management ladder tray systems assembled aluminum cable tray ladder



### Cable Tray SHIB NAL

Cable trays are not raceways, but they are treated as a structural component of a facility's electrical system. Cable trays are a part of a planned cable management system to support, route, protect and

### cable tray fabrication guide

The purpose of this article is to define the sequence and methodology for the installation of electrical cable trays, cable trunking, cable raceways and boxes,



### METHOD STATEMENT FOR CABLE TRAY INSTALLATION

7.1.4 Survey the cable tray position or location for possible obstruction and rerouting. In case of discrepancy of cable tray layout against site conditions, shall be informed for final disposition.



## Best Practice Guide to Cable Ladder and Cable Tray Systems

This publication is intended as a practical guide for the proper and safe\* installation of cable ladder systems, cable tray systems, channel support systems and associated supports.

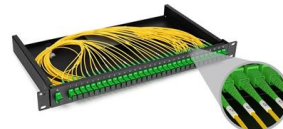


### Cable trays

We offer a wide range of cable tray systems to support tubing, electrical cables and instrumentation. Our cable trays are produced in fit for purpose materials like

## Cable Tray and Conduit Installation Guide

This method statement outlines the procedures for installing cable trays and conduits, including: 1) preparing materials and tools, 2) erecting supports and



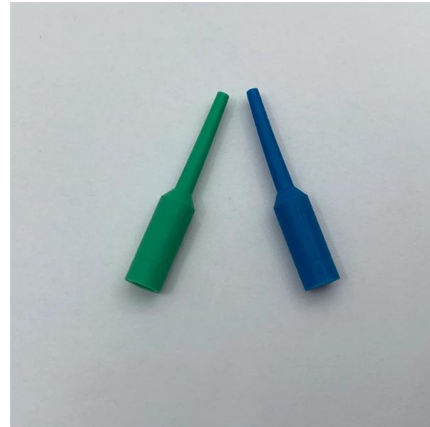
### Cable Tray Installation Method Statement , PDF

The document provides guidelines for installing cable trays and accessories. It outlines 15 steps for the installation process including preparing cable tray



## Guide to cable support systems

Four different mesh cable tray types are available, depending on the requirements, area of application and cable quantity. The innovative Magic connection system of the GRM and G-GRM mesh cable



## Contact Us

---

For datasheets, pricing, or custom high-speed optical interconnect solutions, please visit:  
<https://www.syropy.com.pl>