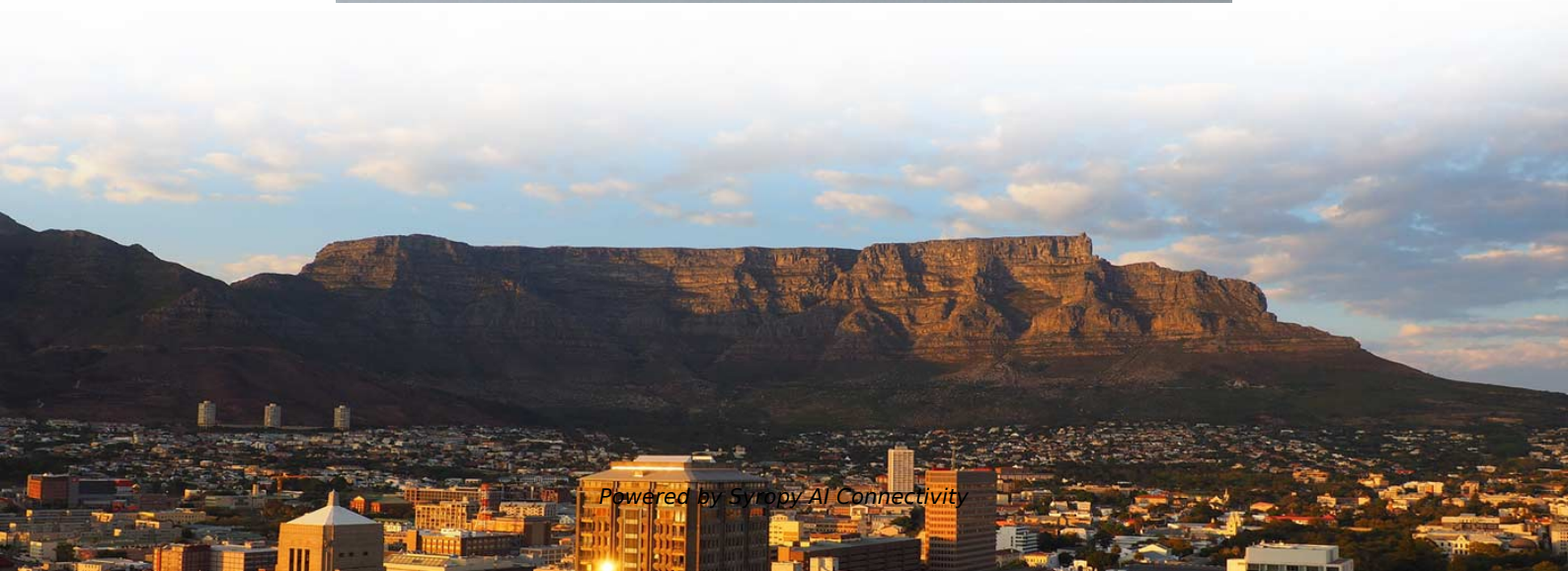


Cable tray fabrication cable tray crossarm





Cable tray fabrication cable tray crossarm



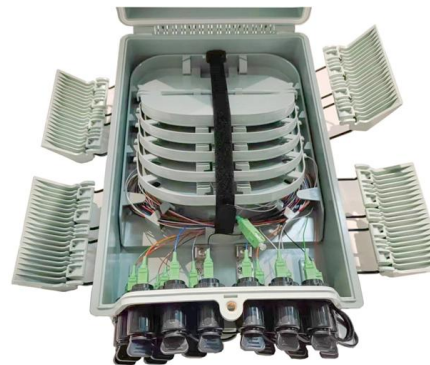
Free download! Cable Trays and Horizontal Racks

Download free BIM objects from over 2 000 manufacturers. Choose among BIM objects for SketchUp, Autodesk, Revit, Vectorworks or ArchiCAD.



Cable Trays and Fittings

Cable trays consist of rigid components like supports, connectors, and fittings made of either certain steel alloys or aluminum materials. The right cable trays and

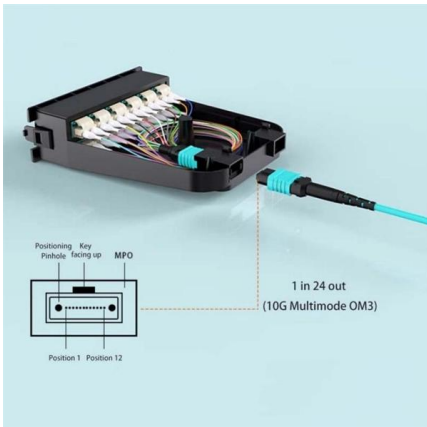


About MT Tray

In other words, MT dedicated itself to deliver defect-free cable tray products at the most competitive possible cost. Egyptian Cable Tray Manufacturer that aims to

Fabrication & Cable Tray System

We shop fabricate steel plates, cable tray and ladders, culverts and heat shields, pre-assembled piping and tank structures, supplying them directly to your site for easy integration into your construction



LEGRAND CABLE TRAYS TECHNICAL GUIDE

Not all cable trays are equivalent. The mechanical and electrical characteristics, tests, certifications, overall quality management, recommendations mentioned in this technical guide only apply to our

Guide to cable support systems

Widths of 8 and 15 millimetres enable flexible adjustment to different cable trays, cable ladders and cable volumes. With the help of the matching SBV tightening strap locks and 576 spring chuck, the



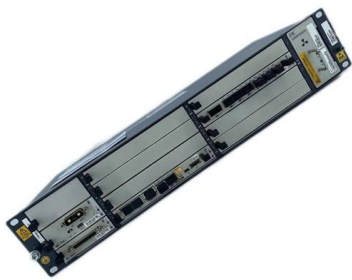
Cable Tray Technical Guide A practical guide to product selection and

In designing supports for a cable tray system, consideration should be given to the loads associated with future cable additions and any additional loading that may be applied to the cable tray system (e.g.,



TECHNICAL AND SIZING DATA

The cable ampacity installed in solid tray will be similar to cable installed without spacing in accordance with CEC Rule 12-1210 (3). Solid tray will carry the same type of conductors as ventilated trays.



CABLE TRAY SYSTEMS GUIDE

Cable Tray Systems Guide HUBBELL Hubbell Wiring Device-Kellems and Hubbell Premise Wiring are divisions of Hubbell Incorporated, a U.S. headquartered manufacturer with over 130 years of

What is Cable Tray and How it is used in Industrial

What is Cable Tray? In electrical cabling, a cable tray is a metallic structure used to handle insulated electrical power distribution, control, and



Comprehensive Guide to Cable Tray Fabrication and

This guide will discuss the process of cable tray fabrication and installation, and further highlight the considerations of using a GI cable tray for various applications.



Type of Cable Tray

Type of Cable Tray Introduction: Today cable trays have become a necessary part of industrial and commercial construction by offering quick, economical and flexible solutions to these problems.

More durable and robust

The outer layer is made of environmentally friendly PVC, which is soft and elastic. It can be stretched without damage, so you can use it with confidence.

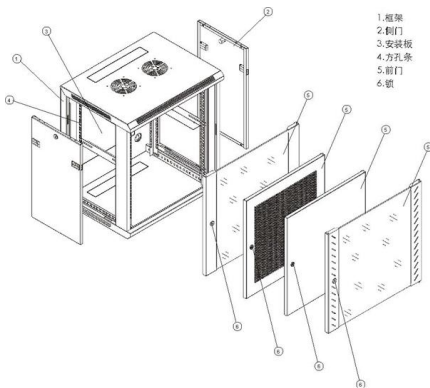


INTRODUCTION

EGYTARY is connected with the different cable support systems, particularly cable trays and cable ladders. In addition to its policy objectives.

The Comprehensive Guide to Cable Tray Systems:

Master cable tray systems with our expert guide covering structural engineering, material selection, and NEC compliance to ensure safe, efficient,



- 1. 框架
- 2. 侧门
- 3. 安装板
- 4. 方孔条
- 5. 前门
- 6. 锁

Fabrication and Cable Tray System

Fabrication & Cable Tray System Fabrication & Cable Tray System Supermec offers specialised fabrication solutions to meet your project needs. Thanks to many

Cable Tray Fabrication Method Statement



The document outlines procedures for cable tray fabrication and installation for the HA MBD project. It includes sections on scope of work, reference documents,



Cable Management System

Wescosa designs and manufactures cable tray systems, including perforated tray, cable ladder, channel tray and strut (metal framing), directly from production facilities in Dammam Saudi Arabia.

Cable Trays, Cross Arms and Accessories Manufacturers in UAE

Manufacturers of cable trays, cross arms and accessories let the clients use the complete quality driven inventory. Many companies allow the customers to enjoy fast-track delivery to assist them in a



Best Practice Guide to Cable Ladder and Cable Tray Systems

This guide covers cable ladder systems, cable tray systems, channel support systems and associated supports intended for the support and accommodation of cables and possibly other electrical



cable tray system

A cable tray system is an assembly of metallic cable tray sections and accessories, that forms a rigid structural system to support cables.



12-SDMS-06

Carbon steel cable trays intended for installation in corrosive or highly corrosive environments with severe alkaline and acidic conditions shall be hot-dip galvanized zinc after fabrication.

Complete cable tray manual for electrical engineers and

Complete cable tray manual for electrical engineers and designers (on photo: power cable management ladder tray systems assembled aluminum cable tray ladder)



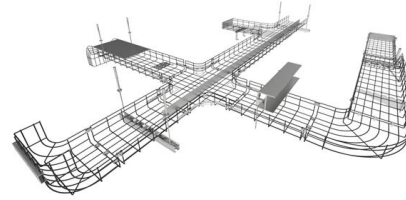
Beama Best Practice Guide , Installation Of The System , Cable

The following recommendations are intended to be a practical guide to ensure the safe and proper installation of cable ladder and cable tray systems and channel support and other support systems.



Full cable tray systems specification document

B. Cable tray systems are defined to include, but are not limited to straight sections of [ladder type] [trough type] [solid bottom type] [channel type] cable trays, bends, tees, elbows, drop-outs, supports

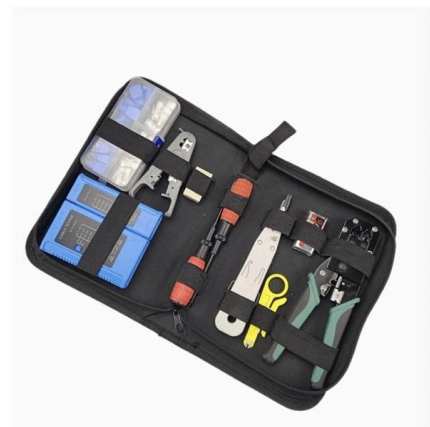


Cable Tray Installation Accessories

Explore essential cable tray installation accessories for secure, stable, and safe cable management systems: hoisting frames, cross arms, wall

Best practice guide to cable ladder and cable tray

Cable ladder and cable tray systems The following recommendations are intended to be a practical guide to ensure the safe and proper installation of



Galvanized Crossarms for Cable Trays: Analysis of Functions,

Galvanized crossarms for cable trays are typically made of Q235 low-carbon steel via rolling. Their cross-sectional forms are mostly U-shaped or L-shaped, and their thickness is classified



Contact Us

For datasheets, pricing, or custom high-speed optical interconnect solutions, please visit:

<https://www.syropy.com.pl>