

Cable tray elbows





Overview

Cable tray fittings like elbows, bends, tees, crosses, and risers are used to change the direction of cable routing. Ensure your cable tray solution is designed for your application, with our vast range of ladder tray fittings. The 90° Vertical Elbow provides essential support and enables seamless cable management throughout your cable routing system. The Snap Track system was designed and is intended to be used as a UL Classified continuous assembly of straight sections, fittings, and accessories used to form a structural support, for the purpose of supporting, protecting.



Cable tray elbows



45° Horizontal Cable Tray Bend :: PLATT ELECTRIC SUPPLY

Item #: 0125402 CAT #: 6A1245HB24 UPC: 781011207809 Category: 45° Horizontal Cable Tray Bend Call for price Company wide: 0 in stock

Cable Tray Accessories, Cable Tray Hangers & Support , RS

These fittings are used in conjunction with cable trays to support cables in ventilation holes, assist with directional change of piping systems, and aid cable channelling around obstacles. There are several



90° Vertical Elbow , Cable Tray Systems , PUPCO

Discover our 90° Vertical Elbow for cable tray systems. Contact us today for availabilities and receive a quote. Fast shipping guaranteed.



Industrial Cable Tray Fittings

TechLine Mfg. manufactures long radius elbow fittings to enhance ease of use for Snap Track cable tray systems. These are available in vertical inside, vertical



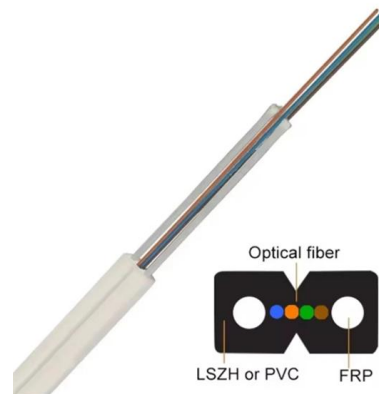
Elbow for electrical supply cables , wire channels , trays , metal

Metal elbows for cable trays are an essential component in electrical installations, ensuring safety, durability, and aesthetic appeal. They are an excellent choice for industrial, commercial, and



Aluminum Ladder Tray Elbow Horizontal Fittings

Horizontal elbows allow for a change in direction. Rail heights range from 4" to 7", widths range from 6" to 36" and radiuses range from 12" to 36". Tray types are available in ladder and solid bottom.



Cable Tray Systems

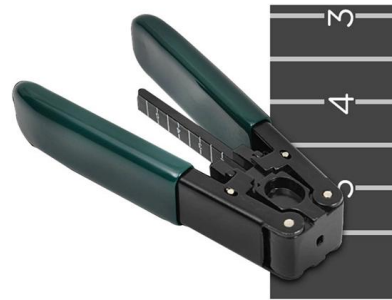
Atkore Channel supports single branches of power or multiconductor control cable or instrument tubing. Ideal for communication, fire alarm, or call station and clock





CABLE TRAY, CABLE LADDER, CABLE TRUNKING CATALOGUE

Fitting and accessories. Fittings are accessories that connect this cable tray to another cable tray to change direction with the same or different width of the cable run. All fittings are available in sizes

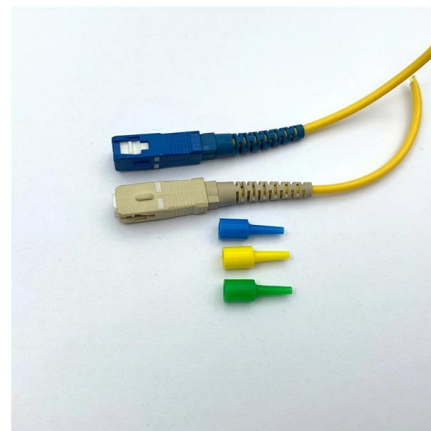


Cable tray system K²

The cable tray system K² (hot press moulding) offers the widest and most complete range of the GRP market. Its unique interlocking and self-adjusting couplers

INTRODUCTION

ALUMINUM CABLE LADDERS STRAIGHT CABLE LADDER (ALUMINUM) HORIZONTAL ACC. FOR CABLE LADDER (ALUMINUM) TEE & X ALUMINUM VERTICAL ACC. FOR CABLE LADDER



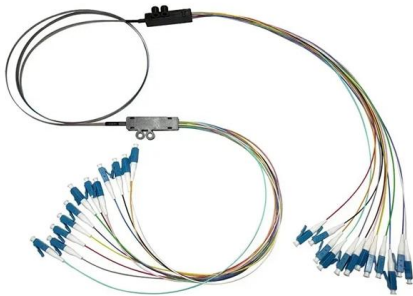
Elbow for cable tray , YESSS Elektro

/ Assortment / Cable support systems / Cable trays and accessories / Elbow for cable tray



Elbow 90° RES

RES 85.500 Elbow 90° for cable tray, 85x502 mm, with unperforated side beams, steel, pre-galvanised according to DIN EN 10346, incl. accessories Add to Cart EUR0.00 Excl. 0% VAT EAN 4013339238804

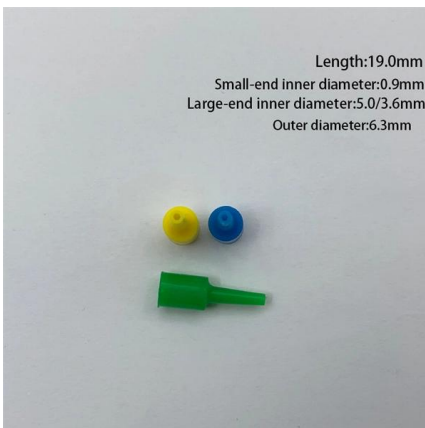


2.5 M LADDER TYPE FRP CABLE TRAY 300W, 2.5 M PERFORATED TYPE FRP CABLE

Bid for tender to 2.5 M LADDER TYPE FRP CABLE TRAY 300W, 2.5 M PERFORATED TYPE FRP CABLE TRAY 150W, FRP ELBOWS - LADDER by Ministry of Heavy Industries and Public

Cable Tray And Fittings , Graybar Store

A cable tray system is used to support insulated electrical cables used for power distribution, control, and communication. Cable trays are used as an alternative to open wiring or electrical conduit



Length:19.0mm
Small-end inner diameter:0.9mm
Large-end inner diameter:5.0/3.6mm
Outer diameter:6.3mm

CABLE TRAYS

HORIZONTAL ELBOW RIGHT HAND REDUCER
LEFT HAND REDUCER INSIDE RETURNED FLANGE
CABLE TRAY WIDTH : FROM 50 TO 900mm
LENGTH : 2.44 AND 3.0 METER



Vertical Cable Support Elbow , Ladder Trays , Cable Tray and Reels

The aluminum I-beam design of ITray is perfect for industrial installations with large diameter cables in long span situations, minimizing total tray width and creating a smooth transition between straight



Cable Tray Elbow (Vertical) - G-STEEL TRADING

A cable tray elbow. Usage: is used to complete the whole project as it is one of the cable tray accessories, that make the cable go through all available space easily

Industrial Cable Tray Manufacturer & Supplier in India

High-load galvanized perforated & ladder cable trays. Leading industrial cable tray manufacturer & supplier in India. Custom sizes, full accessories, quick installation.



Cable Tray Fitting Accessories

Cable tray fittings like elbows, bends, tees, crosses, and risers are used to change the direction of cable routing. They allow cables to navigate corners, changes in



Cable Tray and Reels , Wire and Cable Management

Fast installation with dependable support. Everything you need to build a cable management system, including Cablofil wire mesh cable tray, ladder cable tray, mesh cable tray, ladder cable tray,



90° Vertical Elbow , Cable Tray Systems , PUPCO

Discover our 90° Vertical Elbow for cable tray systems. Contact us today for availabilities and receive a quote. Fast shipping guaranteed

Cable Trays

Bahra Electric Cable Trays are an essential component of any well-designed electrical infrastructure, providing a safe, organized, and easily accessible



Elbow 45° KKC

GRP-Elbow 45° for cable tray, with unperforated side rails, with moulded connector, various dimensions, glass fiber reinforced polyester, pressed, RAL 7032, pebble



Cable Tray Fitting Accessories

Cable tray fittings like elbows, bends, tees, crosses, and risers are used to change the direction of cable routing. They allow cables to navigate corners, changes in elevation, or traverse different planes



I-BEAM Ladder Horizontal Elbows 90°

Ensure your cable tray solution is designed for your application, with our vast range of ladder tray fittings. Choose from the following: Horizontal elbows, Vertical

Contact Us

For datasheets, pricing, or custom high-speed optical interconnect solutions, please visit:
<https://www.syropy.com.pl>